

"Wishbone Special"



1987 Ford L-9000 Tandem Axle Tractor
Big Cam Cummins 300 H.P. 10Spd. Trans.
Hendrickson Susp. 11Rx22.5 Good, New Brakes
Runs Good.....\$3,990
Call Ray at 856-424-6300

"Mechanic's Special"



2000 Dodge B3500 Maxi RamWagon 15 passenger
Dual A/C & Heat, Privacy glass, PW,
PDL, Cruise, Cass. 5.9L V8,
(No Compression in Cyl. #4) 108,000 miles.
\$6,500 As Is
717-354-3199

WHEN AGRICULTURE IS YOUR LIFE,



Eby's complete line includes models for every requirement:

BODIES

Gooseneck Trailers - Lengths 14--32',
Widths 7', 7'6", 8' and 8'6"
Bumper Hitch Trailers - Lengths 12' - 18'
Grain Bodies -
Lengths to 24',
plus landscape
and general
purpose dumps to 12'
Flatbed Bodies - Lengths
to 32' in 5 widths
Landscape Bodies - Lengths to 12'

GOOSENECKS

BUMPER HITCHES



Blue Ball, PA
800-292-4752

For quality equipment and customer service that works as hard as you do, nobody offers more than EBY.

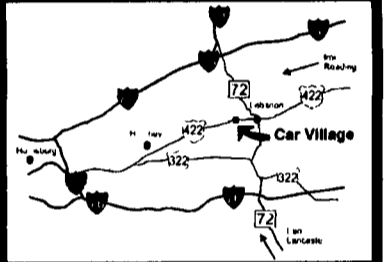
THE EQUIPMENT CHOICE IS EBY.

Business Hours:
Mon.-Fri. 9 to 9;
Sat. 9-4

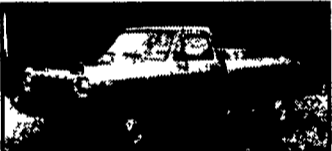
2300 W. CUMBERLAND ST.
(Rt. 22)
LEBANON, PA 17042
(Across From Lebanon Valley Mall)

CAR VILLAGE

HEAVY DUTY TRUCKS



PHONE 717-274-200 Toll Free 1-800-650-1420



89 DODGE 250 4x4
5 Spd., Transmission, Cummins Turbo Diesel, A/C,
Lock Out Hubs, Tow Pkg.



4x4 SUPER CAB DUALLY
2000 FORD F350
Very Strong Powerstroke, Turbo Diesel, 6 Spd.,
Loaded XLT, Factory Tow Pkg., Aluminum Wheels



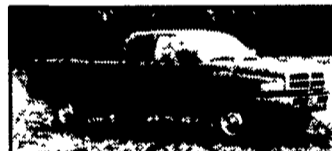
PICTURE PERFECT
99 DODGE 2500 4x4
You Will Like This One. Only 28,000 Miles, 24 Valve
Cummins Turbo Diesel, Auto., Tow Pkg., All Options.



2001 DODGE 2500 CLUB CAB 4x4
24 Valve Cummins Diesel, Factory Tow Pkg.,
Laramie SLT, Only 19,000 Miles, Remaining New
Tr. Warranty



5 SP. SHORTBED • 99 DODGE 2500 4x4
Cummins Turbo Diesel, 5 Sp., Cold A/C, Loaded,
All Options, Only 41,900 Miles
2 Available



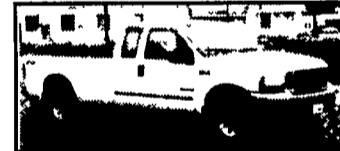
99 DODGE 2500 4x4
Very Nice Tr, Only 23,000 Miles, V8, Auto., A/C,
Tow Pkg.
\$19,900



6 SPD. CREW CAB • 4 WHEEL DRIVE
99 FORD F350 XLT LARIAT
Great Tow Machine, Powerstroke Turbo Diesel,
6 Spd., A/C, Capt. Chairs, Console



PRICED RIGHT
97 FORD EXPEDITION XLT
Great Family Tow Machine, 5.4 Triton V8, Auto.,
A/C, Power Everything, Alloy Wheels, New Insp-
Service - Tires, Priced Right, \$13,900



2000 FORD F250
SUPER CAB 4x4
Very Nice, Loaded, XLT, 40/20/40 Sent., Powerstroke
Turbo Diesel, AT, A/C, Tow Pkg., Alloy Wheels



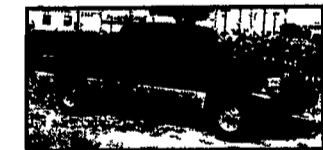
97 DODGE 3500 SUPER CAB DUALLY
4 Wheel Drive, Awesome Tow Machine,
Cummins Turbo Diesel, 5 Spd., A/C, Tow Pkg.
\$21,900



99 CHEVY K2500 4x4
Very Nice Heavy Duty 3/4 Ton, Only 46,000 Miles.
Remainder New Tr. Warranty, High Output 6.5
Turbo, Diesel, AT, A/C, Fact. Tow Pkg. Lots Of Tr
For The Money, Only \$21,900.



\$19,900
97 FORD F250 4x4 PICKUP
Very Nice, Heavy Duty 3/4 Ton, Powerstroke Turbo
Diesel, AT, A/C, Dual Tanks, Tow Pkg., Alloy Wheels, A
Must See.



SHORTBED SUPER CAB
99 FORD F250 XLT
4 Wheel Drive, Very Nice, Only 50,000
Miles, Powerstroke Turbo Diesel, A/C,
Loaded XLT, Aluminum Wheels.



5 SPD. DIESEL • \$22,900
98 GMC K3500 CREW CAB
Single Rear Wheel High Output, 6.5 Turbo Diesel,
5 Spd., A/C, Limited Slip 4.10 Gears, Only 59,000
Miles, Remaining Factory Warranty



\$19,900
98 FORD E350 SUPER CARGO VAN
Heavy 9400 GVW, Powerstroke Turbo Diesel, AT,
A/C, Only 64,000 Miles, Remainder New
Tr Warranty

FLATBEDS, WORK & DUMP TRUCKS



4 DOOR MECHANICS
01 FORD 450 SUPER DUTY
Only 800 Miles, Remaining New Tr. Warranty,
Powerstroke Turbo Diesel, Auto, A/C, Vinyl Seat & Floor



4x4 CREW CAB FLATBED
2001 FORD F350 SUPER DUTY
Brand New Eby Flatbed, Gooseneck & Class 4 Hitch/
Powerstroke Diesel, Auto, Loaded XLT, Only 800 Miles



2000 FORD F850
FLAT DUMP
5.9 Cummins Turbo Diesel, 6-Spd., A/C, 16 ft. Steel
Bed, PTO Hoist, 28K GVW, 44K Miles



4x4 MECHANICS TRUCK
2000 CHEVY K3500
Gas, V8, Auto., A/C, Only 30,000 Miles, 11 Ft. Body,
Very Nice



NO CDL REQUIRED
2000 FORD F650 FLATBED DUMP
Brand New 15 Ft. Steel Bed & Hoist, Powerstroke
Turbo Diesel, Allison Auto., Only 12,000 Miles,
Priced Right. \$39,900



4x4 CHASSIS CAB
97 FORD F350
Only 58,000 Miles, 161 W.B., 84" C.A., Powerstroke
Turbo Diesel, 5 Spd., A/C.



12 Foot Flatbed Dump
2000 Ford 450 Super Duty
Real Nice, 31,000 Miles, Powerstroke Turbo Diesel,
6 Spd., A/C, Tow Pkg.



4 DOOR MECHANICS TRUCK
2001 FORD F650 4x4
Excellent Condition, Powerstroke Diesel, AT, A/C,
Feeding Box, Only 22,000 Miles.



15 FOOT BOX • 2000 CHEVY CUBE VAN
Very Clean Inside & Out, Diesel, AT, A/C,
New Service & Insp.



GOOSENECK FULLER
2002 FORD 550 SUPER DUTY FLATBED
Heavy 17,500 GVW, Powerstroke Turbo Diesel,
6 Spd., A/C, Gooseneck Hitch



4x4 CHASSIS CAB
1999 FORD SUPER DUTY
Rare Find, Don't Wait, Heavy 17,500 GVW, 166 W.B.,
84" C.A. Powerstroke Turbo Diesel, 6 Spd., A/C



LANDSCAPERS LOOK HERE
2000 FORD 450 4 DOOR DUMP
Almost New, Only 10,000 Miles, Powerstroke, AT,
A/C, 3 Yard Dump Body, Tow Pkg.



2000 FORD 550 SUPER DUTY
DUMP TRUCK
Like New, Only 7,000 Miles, Powerstroke Turbo Diesel,
AT, A/C, 3 Yd. Body



4x4 CHASSIS CAB 2000 DODGE 3500
Awesome 24 Valve Cummins, Auto, Short 137 W.B.,
80" C.A., Fr. & Rear Dana Axles, Chrome Simulators
Only 31,000 Miles. Remainder New Tr. Warranty



\$16,900
94 FORD 450 SUPER DUTY
12 Foot Dump Body, Tow Pkg., Brand New Engine,
2 Yr. Warranty, Heavy 15000 GVW