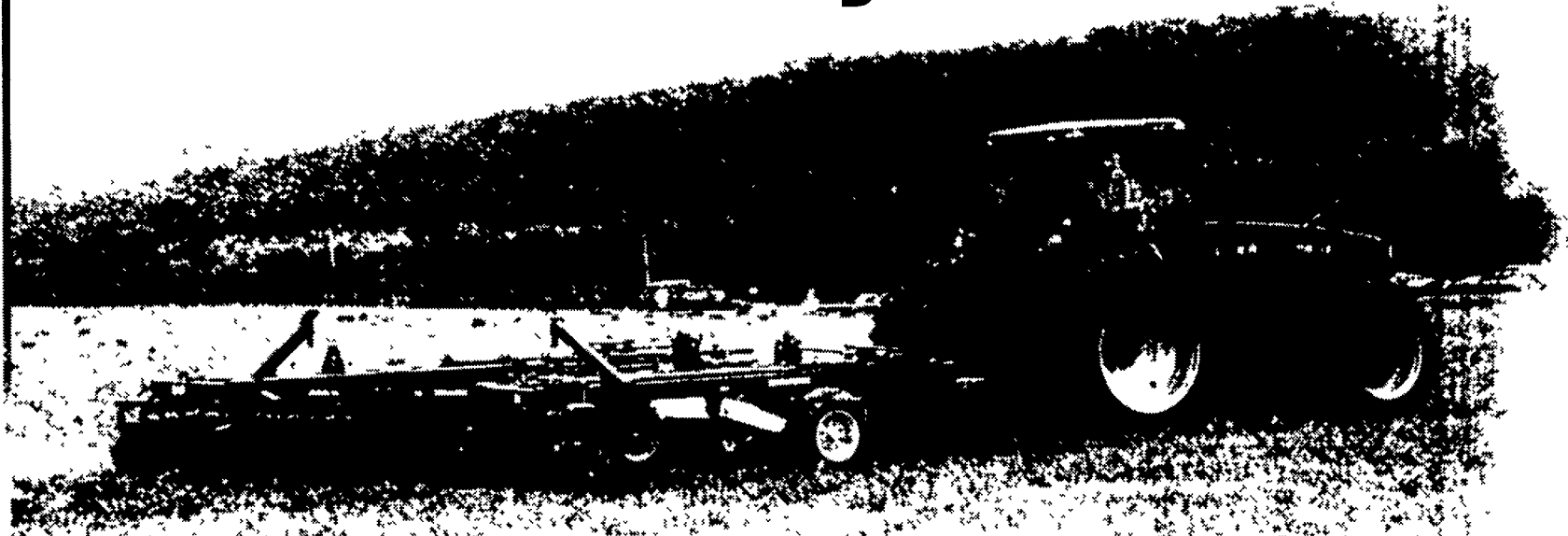


Put Profits Back into Tillage Management With Krause's Profit-Till System



Rockflex Disc Harrows

Available from 12'-31'

6150 Series Landsman

Available from 12'-42'

High Residue Field Cultivators

Available from 20' 6" to 50' 6"

Slicer Chisel Plows

Available from 5-13 Shanks

In 1983 Krause introduced the Profit Till System - based on the principles of soil tilth, crop residue management, plant food availability, and moisture management through proper and

efficient tillage practices. 20 years later the Profit Till System still focuses on increased yields, reduced production costs and enhanced profit potential.

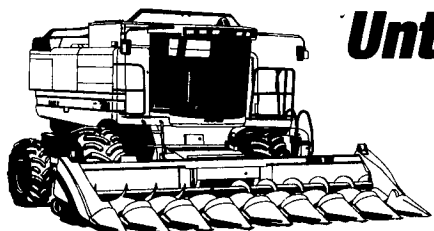


Harrows
The Krause
Your
Goal

BUY NOW ~ NO INTEREST

Up to Jan, 2004 on New Tractors & Up to 6 Months on Used Tractors*
Until 9/1/2003 On New & Used Combines & Heads*

Call a Hooper Salesman for
Details of Models and Waiver Dates



4WD TRACTORS

NO.	YR	MAKE	DESCRIPTION	HP
A 43937	1997	CIH	9390 4WD Cab, 3727 Hours, Front & Rear Duals,	425 ENG HP
A 24062	1998	CIH	9380 Quadtrac 4WD Cab, 2570 Hours, Diesel	400 ENG
B 43094	1997	CIH	9370 Quadtrac, 3576 Hours, 12 Spd Power Shift,	360 ENG
A 24663	2000	CIH	STX 325 4WD, 135 Hours, 20 8x42 Duals	325 ENG
A 24962	1977	Steger	325 4WD, 23 1x34 Front & Rear Duals	325 ENG
B 23750	1992	JD	8760 4WD Cab, 7221 Hours, 20 8x42 Rear Duals,	300 ENG
B 44418		CIH	9150 Tractor,	275 ENG HP
A 40919	2000	CIH	STX275 4WD Cab,	275 ENG HP
A 43699	2000	CIH	STX275 4WD Cab Tractor, 1,052 Hours	275 ENG HP
B 44366	1996	CIH	9330 4WD Cab, 2256 Hours, Just Traded,	240 ENG HP
B 42511	1982	Versatile	555 4WD Cab, 3925 Hrs, 18 4x38 F&R Duals,	182 PTO HP
B 43827		Steger	PT225 4WD, 5635 Hours,	187 HP
B 24103	1976	IH	4366 4WD Cab, 3235 Hrs, 3 Rem, 18 4x38 Duals,	163 PTO HP
B 44402		JD	7600 4WD CAB, 3155 Hrs, Just Traded	

INTERNATIONAL TRACTORS

NO.	YR	MAKE	DESCRIPTION	HP
B 43808	1979	IH	1586, 5496 Hrs, 20 8x38 Rear Tires, 3 Pt Hitch,	161 HP
A 32028	1977	IH	1486 Cab, 6198 Hrs, 20 8x38 Rear Tires,	145 HP
C 42634	1982	IH	5088, 8130 Hrs, 3 Pt Hitch, 18 4x38 Rear Tires	136 HP
C 32232	1980	IH	1086 2WD Cab, 2731 Hours, 11 00x16 Ft Tires,	131 HP
C 32137	1973	IH	1066 2WD, 5623 Hrs, 18 4x38 Rr, 540/1000 PTO	116 HP
C 32231	1979	IH	986 2WD ROPS, 3202 Hours, 18 4x38 Rear Tires,	105 HP
A 25197		IH	986 Tractor, 4904 Hrs, Just Traded,	105 HP
A 24411	1979	IH	886 2WD, 5662 Hours, 16 9x38 Rear Tires,	86 HP
C 43495		IH	756, 18 4x34 Rear Tires,	76 HP
B 42728	1965	IH	706, Gas, Gear, 540 PTO, 2 Pt Hitch,	73 HP
A 25211		IH	706D, 2849 Hrs, 15 5x38 Rr Tires, 540/1000 PTO	73 HP
B 42552		IH	B 275 2WD	33 HP
A 25250	1981	IH	284D, 894 Hours, 540 PTO, Just Traded,	28 HP

JOHN DEERE TRACTORS

NO.	YR	MAKE	DESCRIPTION	HP
B 43287	1989	JD	4755 Mid Cab, 4235 Hrs, Duals, S Remotes	177 HP
A 24956	1991	JD	870, 997 Hours,	25 HP

CASE IH TRACTORS

NO.	YR	MAKE	DESCRIPTION	HP
B 44234	1999	CIH	MX240, 1748 Hrs,	205 HP+
B 43058	1998	CIH	8940 MFD Cab, 1904 Hrs, 20.8x42 Duals	205 HP+
A 24819	1996	CIH	7240 MFD Cab, 3137 Hrs, Rear-20.8x42 Duals	197 HP+
D 50174		CIH	7240, Just Traded,	197 HP+
B 44408		CIH	7040 MFD Tractor, 1965 Hours, Just Traded,	195 HP+
B 44311		CIH	MX220, 106 Hrs,	185 HP+
A 23803	2000	CIH	MX 220 MFD Cab, 1973 Hours, 18.4x46 Rr Tires	185 HP+
B 43968	2001	CIH	MX 220 MFD Cab, 1167 Hours	185 HP+
B 43970	2001	CIH	MX 220 MFD Cab, 900 Hours	185 HP+
B 43928	1998	CIH	8930 MFD Cab, 1023 Hrs, Rear Duals, 3 Remotes,	185 HP+
D 44410		CIH	7130 MFD Tractor, Just Traded,	170 HP+
A 24788	1997	CIH	8920 2WD Cab, 1489 Hours, 540/1000 PTO,	155 HP+
A 24729	1994	CIH	7220 2WD Cab, 4469 Hrs, 18.4x46 Rear Tires,	155 HP+
B 44407		CIH	8910 MFD Tractor, 1199 Hours, Just Traded,	135 HP
D 44238	1996	CIH	5250 MFD, 2787 Hours, 18.4x38 Rear Tires,	112 HP
A 43237	1995	CIH	5240 MFD Cab W/ Ldr, 6290 Hrs, 18.4x38 Rr Tires,	100 HP
C 32170	1997	CIH	MX 110 2WD Cab with 300 Ldr, 1310 Hrs,	95 HP
B 44411		CIH	5140 MFD Rops Tractor,	92 HP
D 50196	1996	CIH	5230 MFD, 3638 Hours	90 HP
B 43678	1998	CIH	MX 110 With Loader, 641 Hrs, 18.4x38 Rr Tires	85 HP
A 25078	1988	CIH	1594 MFD ROPS, 2567 Hrs, 18 4x38 Rr Tires	85 HP
C 32250	1991	CIH	895 MFD w/XL Cab, 2250 Ldr, 7000 Hrs, 540 PTO, 72 HP	
A 44292	1999	CIH	C80 W/Quickie 310 Ldr, 1030 Hrs, 16.9x24 Rr Tires, 50 HP	

OTHER TRACTORS

NO.	YR	MAKE	DESCRIPTION	HP
C 32247		Case	W4 Ldr, 1920 Hrs, Fork Lift & Bucket, 12.5x15 Rear Tires	
C 32134	1984	Case	1594 MFD Cab, 3639 Hours, 18 4x34 Rear Tires	85 HP
B 24958		CAT	85E Challenger, 3732 Hours, 28" Tracks	375 ENG HP
B 44409		NH	8970 MFD Tractor,	210 HP
B 44417		AC	D17 Tractor	

USED SPRAYERS

Tyler Sprayers	Wilmar Sprayers
B 24636 Tyler Patriot 150	B 42442 Wilmar 7400
B 44279 Tyler Patriot 150	

USED DRILLS

NO.	MAKE	MODEL	SIZE	
B 44067	GP		30' NT	
D 50194	CIH	5100	21x7	
C 24276	CIH	5100	24x6	48x7.5"
B 44304	CIH	5100	24x6	48x7.5"
A 24641	CIH	5300 Conv	24x6	30' NT
B 43247	CIH	5300 Conv	24x6	30' NT
B 44262	GP	14'		3010P
B 44405	GP	24' NT		C 32276 IH 510
A 25255	GP	24' NT		A 25300 IH 510 Conv
B 18940	GP	30' Conv	6"	B 43952 IH 5100 Conv
				C 32237 JD 450
				C 32246 JD 450
				B 44382 JD 750 15' NT



B 24499 1993 Great Plains 30' NT Drill, 3" Press Wheels, 48x7 5" Spacing, New Openers



C 42634 1982 IH 5088 Cab, 8115 Hours, 3 Pt Hitch, AC/Heat, Tires Front-11x16SL, Rear-18.4x38, PTO Shield, Gear, Top Link, Diesel, 136 HP



A 24331 1999 Krause 6318A Landstar, 18' Cut, Disc Gangs, K-Tine Shanks, Star Wheels, Tine & Reel



A 43937 1997 CIH 9390 4WD Cab, 3727 Hours, Front & Rear 20 8x42 Goodyear Triples, 4 Remotes, Owners Manual, 425 ENG HP

ONLY THE 20

Did You
... That the average
in the United States
In 2000, the average



VISIT US

McALISTERVILLE, PA
800 433-8579
INTERCOURSE, PA
800 732-0017
MIDDLETOWN, DE
800 341-4028
SEAFORD, DE
800 843-3056

*Financing options subject to change without notice. On most models