

Gochenaurs Work Together

(Continued from Page A23)

farm, they arrive in a big way — approximately 18,000 poult come at once. The poult come from Virginia, Ohio, the Carolinas, or even Canada or California, on occasion.

After they arrive at the farm, the day-old birds are loaded on a flatbed pickup and driven down to the barn, where they are unloaded. They snuggle in groups of 225 they are unloaded into cardboard rings — under the pancake brooder stoves which keep the temperature at a balmy 100 degrees.

A nipple line close by, with

shiny water droplets to catch their eyes, and small mini cups offer water to the young birds.

Besides helping to feed calves (Karen raises 125 calves a year for a nearby dairy farm), the children help out, “especially in the first week. It’s like a marathon around here then,” said Bob.

Young poult “have a tendency to flip over on their backs and can’t get back up by themselves,” said Bob. “They get dehydrated if they are there too long.”

Consequently the children travel through the brooder house with buckets, gathering chicks that have flipped, and taking them to a recovery pen that is

equipped with a special mat offering better footing.

Nurturing the young flock also entails checking the poult every two hours for the first couple days. Even when the birds are older, Bob checks all three barns several times a day and again at the end of each day.

Also during the first week the Gochenaurs scoop the poult’s feed into a wheelbarrow to put in the small feeders, which equates to hand-hauling four tons of feed.

Finishing

When the poult are approximately six weeks old, they are split into two groups and moved to the finishing barns.

This also is a family endeavor, as the children can help push the young turkeys through the corridors that lead to the other barns. “In an hour we can move a barnful,” said Bob.

In the finisher barns the turkeys now drink from bell-shaped “plasons” which give them ac-

cess to more water, “especially during a hot dry summer,” said Karen. All three barns of turkeys may drink more than 6,000 gallons of water a day.

Feeding thousands of turkeys also requires a substantial amount of feed, since all of the birds eat fifteen tons of pellets a day.

“Typically, at their peak, when the birds are older, we can go through three tractor trailer loads a week,” said Bob.

The toms are “pushing close to 40 pounds” when they leave at 20 weeks of age.

When the birds leave a crew of 8-10 people come to the farm to push the birds onto a loader, a four-foot-wide conveyor belt that takes the birds outside of the barn, where they are loaded into pens.

Health, Safety

Since keeping the young poult in top health is important, Bob hand-forks the shavings in the brooder house each day in the water and feeding areas.

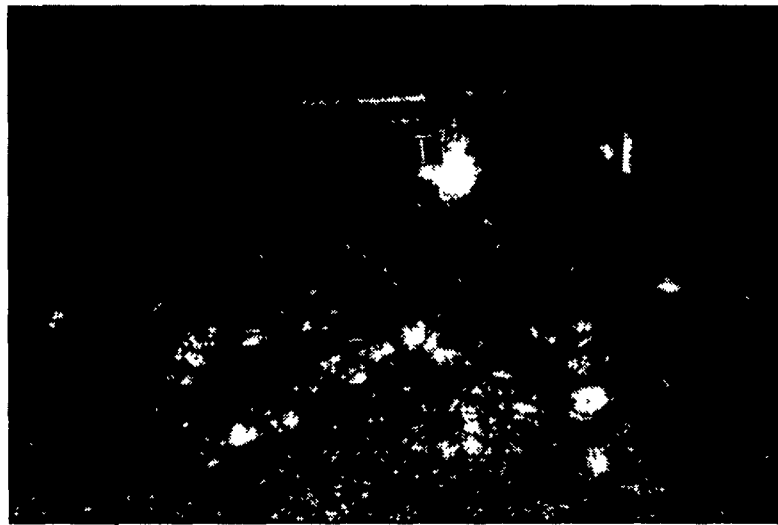
This keeps the litter dry and prevents the poult from developing foot and health problems. Bob also regularly rototills the sawdust in the finisher barns for the same reason.

Since the poult need to be kept warm, and the larger birds should stay in temperatures in the 60-degree range, alarms go off to sound the alert if the climate changes too drastically.

“It’s harder to regulate in the spring and fall, since the temperatures are so variable,” said Karen.

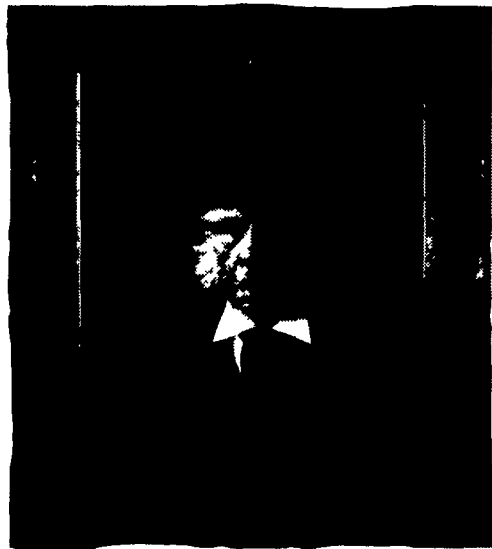
In addition to temperatures, biosecurity measures are also a concern for the Gochenaurs.

“Anyone entering the farm has to sign in,” said Bob. Also, the end doors are kept locked. Dip pans are inside each door, and the disinfectant is changed daily. Bob also changes into separate boots for the different barns. The barns are also screened to keep the wild birds out.



The poult snuggle in groups of 225 — they are unloaded into cardboard rings — under the pancake brooder stoves which keep the temperature at a balmy 100 degrees.

Only one person in the whole world couldn't benefit from our Christmas Clubs.



You guessed him—Scrooge. Everyone else will find that Christmas Clubs at Northwest are an easy way to save for those special holiday gifts, while earning interest at the same time.

2.50%
Annual Percentage Yield
Minimum Deposit \$1.00

Open your Christmas Club account today and look forward to happier holidays ahead.

NORTHWEST SAVINGS BANK

Good Banking. Good Friends.

201 West Main Street New Holland, 355 5350
24 E. Main Street Mount Joy 653 8121
350 Locust Street Columbia 684 2868
744 South Broad Street Lititz 625 3001
2296 South Market Street Elizabethtown 367 8070
24 W. Orange Street Lancaster, 392 6264
922 Columbia Avenue Lancaster 393 0900
1195 Manheim Pike Lancaster 393 0700
1 West Main Avenue Myerstown 866 2929
Dutch Way Shopping Mill Rte, 501 N Schaefferstown 949 2829

www.northwestsavingsbank.com

MEMBER FDIC

Interest rate in effect as of the date of this newspaper

Walk-In • Catalog • Web Sales - www.farmerboyag.com
Call or email us today for a FREE catalog. TOLL FREE -1-800-845-3374 • 717-866-7565

Pur-fire HEATERS
ARSTREAM 2

The Purafire heater provides a consistent, clean-burning and fuel efficient source of warmth for all types of poultry and swine houses. Choose from two models; the C80M variable output (40,000-80,000 BTUH) and the C225 (225,000 BTUH). Each is LP or natural gas compatible and can be mounted inside or outside your confinement house. Electronic ignition.



BASKET FANS
With Cord and Ceiling Mounting Brackets.



1/3 Hp, 24",
1/2 Hp, 24"
&
1/2 Hp, 36"
Direct Drive
Quantity Pricing Available

Quantity Pricing Available

FEED BINS



We assemble, deliver and set up bins on your farm
*Weather tight die-formed roof
*Stronger engineered sidewalls
*Ground controlled fill caps
*Galvanized roll formed legs
*Engineered leg braced systems
*Fast flowing hopper bottom

With CORE AUGERS and Flex-flo AUGER SYSTEM in 2 1/4" dia. to 5" dia.

OPEN HOUSE

DEC. 13 & 14



Cows see the lite..

Call Us For All Your
DAIRY - POULTRY - SWINE
Remodeling & Equipment Installation Needs

Calf-tel



Multi-Max
Ideal Group Housing for Calves • Goats • Sheep Ostriches • Pigs

INDIVIDUAL CALF HUTCHES by Calf-Tel™ RH & LH Access
Our Deluxe model features a new, extra tall offset entry door opposite a right or left side feed access floor. Lets you group hutches side-by-side for easy feeding and service. Comes with two large pails, inside pail holder, and eyebolts for lifting. Rainproof ridge top ventilators keep calves dry and comfortable.

HERCULITE Heavy Duty Black-Out Tunnel, Dairy & Poultry Curtains

The experts, engineers and veterinarians agree - the best building is a naturally ventilated building. Herculite curtain systems offer state of the art, adjustable sidewalls. Even when closed, the curtains allow for natural light and provide a snug environment.

Lil Spring

LIVESTOCK WATERERS
8 Gal.
1-Hole w/Heat #612010382
2-Hole w/Heat #612010383



LOOPSTALLS



HEADLOCKS



• 1.9 O.D. high yield tubing 13 gauge wall
• Gates with round corners for safety & strength.
Features slant bar feed through fence, built to any length.

M-80 ENERGIZER



- Handles up to 30 acres
- Replaceable module circuits
- Stored Energy • 8 Joules
- 2-Year Warranty with Gallagher Lightning Protection

All Types of Fence Wire IN STOCK

GALLAGHER

Electrical fencing parts and accessories IN STOCK.
Complete packages available.



S17 SOLAR ENERGIZER

- Handles up to 10 Acres
- Rechargeable battery included
- 2-year Warranty with Gallagher Lightning Protection

Ask about INSTALLATION & 24 HOUR SERVICE after the sale.

FARMER BOY AG Supply

WHOLESALE AGRICULTURAL SUPPLIES

Same day shipping on in-stock items



Inquire about our leasing programs.

410 East Lincoln Ave., Myerstown, PA 17067 • Hours: Mon. - Fri. - 6:30 - 5:30 • Sat. - 7:30 - noon