

**1 FARM EQUIPMENT**

545 Mustang skid loader w/Perkins motor, needs motor work, \$2400. 717-354-6829

Cider press, complete w/36 inch rack, new model hyd system good cond. Alphon Hostetter, 143 Cider Alley, Aaronsburg, PA 16820

JD 482C 4x4 rough terrain forklift, 2558 hrs, 5000lb lift, 21' see through mast, side shift, new tires, excellent cond., \$21,750. 856-769-0787

Case 870 gas, very good condition 717-436-8768 after 5 pm

HERCULES, CONTINENTAL Waukesha farm, industrial engine parts. M&M Surplus Sales, 807 Zerega Avenue, Bronx, NY 10473, (718)828-9026; fax 828-9851.

Case 1835B skid loader, 2600hrs, extra buckets, gd. cond, \$5,500/OBO. Lanc. Co. 717-445-4829.

JD 6620 sidehill w/643 & 215 flexheads, 3700 hrs, field ready. \$25,500. 610-261-2639

2355 JD 4WD, exc. cond.; 722 Bobcat skid loader on steel. 717-355-5199

IH 1066 really sharp, original; IH 1566, IH 1466 fender-all three nice. Zeisloff Eq. 800-919-3322.

Antique: '47 Farmall F, new rear tires, paint, decals, full wheel weights & snowblade, \$2300 obo. 570-347-3125 days, 570-563-2354 eves

JD 5010 earth moving tractor w/paw, can also be used as power unit 1000 RPM, PTO, 120hp. 302-730-1802 lv msg

JD 4500, 40hp dsl, 4wd, loader, 200 hrs, \$19,500. 908-534-4766

Spra Coup 220, 3 wheel, 50ft booms, good working cond, \$10,500. 1991 Bison 16ft stock trailer, 7' wide, \$1000. 570-966-2580

Farmall Super A w/ snowplow, new paint, \$3,200; Farmall Cub w/ snowplow, new paint, \$2,600; 717-533-7345

Triumph stationery commercial corn sheller w/ blower pipe, 15 ton capacity per hr, good running cond, \$400 obo. Center Co., Pa. 814-237-0189

1953 AC CA tractor w/2 plows, \$3000 obo. 570-897-5010

JD 1050, 4wd w/pwr str, #75 loader & #8 backhoe. Turf or Ag tires, perfect cond, repainted, \$15,500. JD 1050, 4wd #75 loader, 2500 hrs, good cond & paint, \$11,000 obo. '90 Demo rear Walco finish mower, \$1500. Warranty 610-298-3206

JD 790 tractor, 30hp, under 100 hrs, w/bush hog & rototiller, \$9000. 908/996-4782

Front end ldr for tractor, fits MF 65, e-mail photos avail, \$700. 410-795-7247.

White 21' wing disc, real nice, \$3500; Ford 2000 w/ snow plow, \$3775. 610-916-3959

Farmall H w/cultivators, \$1675; White 10' transport disc, \$975; Brillion 13.5' cultipacker, \$1275. 610-916-3959

NH 477 haybine, \$900. White Horse plow, \$1650. 717-354-9856

Vermeer Delta 275 discbine, good working cond. 717-361-0903

NH TC33D compact tractor, 4x4, 33hp, hydro, like new 160 hrs, \$11,500. 717-532-3360

IH 710 48.5 bf. auto reset plows, \$1200/ea. Ubler feed mixer cart, 45 cu., \$750. 814-267-6256

1086 CAH, 3 rem. 766 fender, rebuilt motor. 1066 cab. (2) 966 fender. 684, 2 rem. 570-966-3483

Hydra spread manure spreader, model 275, 421 bushel, flotation tires, end gate, upper beater, like new, \$7,900. 717-468-6621.



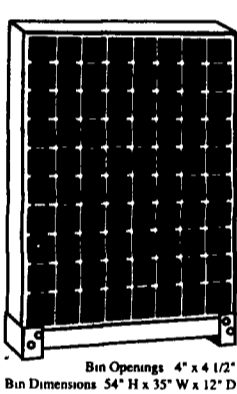
**Gleaner F2**  
Seven (7) to choose from. All Reduced in Price! Mostly all low hours.  
**Zeisloff Eq.**  
Rt. 44, Bloomsburg, PA  
**800/919-3322**

**Jonestown Ag Repair & Supply Store**  
170 Old Rt. 22, Jonestown, PA 17038  
Darvin Weaver  
**717-865-9427 fax 717-865-9096**



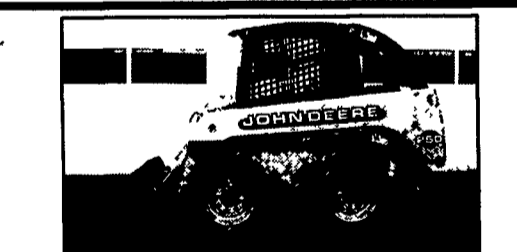
Large selection of Interstate Batteries  
Mystik Lubricants \* Custom made hydraulic hoses \* Napa Belts \* Roller chains \* Skid loader attachments available \* Galaxy Skid loader tires & other brands  
Painting & Sandblasting  
Complete Skid Loader Repairs Our Specialty  
Our store replaces Shirksville Farm Supply

**SAVE TIME, STEPS & MONEY**  
with United's Grade 5 Magnum™ Series Assortment!



Bin Openings 4" x 4 1/2"  
Bin Dimensions 54" H x 35" W x 12" D  
**UNITED FASTENING SYSTEMS INCORPORATED**  
P.O. Box 727  
Ephrata PA 17522  
(717) 738-9987

- Part # G-5-2550**  
Hex Nuts, Lock Washers, Flat Washers  
1/4, 5/16, 3/8, 7/16, 1/2
- Hex Cap Screws**  
1/4 x 1/2, 3/4, 1, 1 1/2, 2  
5/16 x 3/4, 1, 1 1/2, 2, 2 1/2  
3/8 x 3/4, 1, 1 1/2, 2, 2 1/2, 3  
7/16 x 1, 1 1/2, 2, 2 1/2, 3  
1/2 x 1, 1 1/2, 2, 2 1/2, 3, 3 1/2, 4  
Over 4,300 pieces!
- Part # G-5-2553**  
Hex Nuts, Lock Washers, Flat Washers  
1/4, 5/16, 3/8, 7/16, 1/2, 5/8
- Hex Cap Screws**  
1/4 x 1/2, 3/4, 1, 1 1/2, 2  
5/16 x 3/4, 1, 1 1/2, 2, 2 1/2  
3/8 x 3/4, 1, 1 1/2, 2, 2 1/2, 3  
7/16 x 1, 1 1/2, 2, 2 1/2, 3  
1/2 x 1, 1 1/2, 2, 2 1/2, 3, 3 1/2, 4  
5/8 x 2, 2 1/2, 3, 3 1/2, 4, 4 1/2, 5  
Over 4,500 pieces!
- Part # G-5-2575**  
Hex Nuts, Lock Washers, Flat Washers  
1/4, 5/16, 3/8, 7/16, 1/2, 5/8, 3/4
- Hex Cap Screws**  
1/4 x 1/2, 3/4, 1, 1 1/2, 2  
5/16 x 3/4, 1, 1 1/2, 2, 2 1/2  
3/8 x 3/4, 1, 1 1/2, 2, 2 1/2, 3  
7/16 x 1, 1 1/2, 2, 2 1/2, 3  
1/2 x 1, 1 1/2, 2, 2 1/2, 3, 3 1/2, 4  
5/8 x 2, 2 1/2, 3, 3 1/2, 4, 4 1/2, 5  
3/4 x 2, 2 1/2, 3, 3 1/2, 4, 4 1/2, 5  
Over 4,800 pieces!



**2000 JD 250,**  
680 hrs.,  
**\$13,900**

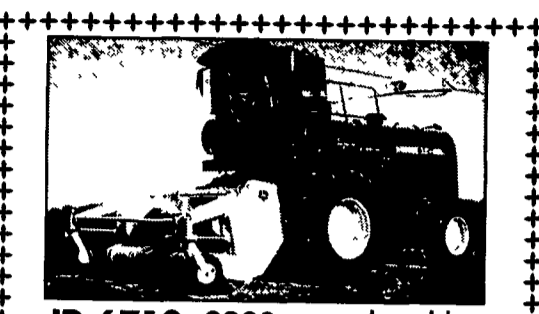


**1997 JD 7775,**  
1600 hrs.,  
**\$10,500**

- 93 Mustang 940, 3400 Hrs. . . . . \$6,500
- 93 NH 785, 3800 Hrs. . . . . \$8,900
- 94 NH 783, Bucket & Forks, 2400 Hrs. . . . . \$9,500
- 97 NH LX885, 3200 Hrs. . . . . \$10,750
- 96 Case 1840, 1500 Hrs. . . . . \$9,000
- New Pallet Forks . . . . . \$495
- 72" Root Grapples . . . . . \$2,200

**Weaco Equipment**  
Reinholds, PA 717/336-7375

Gehl 95 grinder mixer, runs & looks nice . . . . . \$1,200  
NH 352 grinder mixer, nice . . . . . \$1,800  
IH 1150 grinder mixer, nice . . . . . CALL  
IH 10 ft. wheel disc, nice . . . . . \$850  
NH 492 haybine, hyd. tongue, good rolls . . . . . \$4,600  
NH 478 7 ft. haybine, very nice . . . . . \$3,500  
NI 36 ft. elevator . . . . . \$1,500  
**Robert Keiter** 717-362-9096  
Hallfax, PA **Delivery Available**



**JD 6710,** 2230 cutter head hrs,  
4 wd, KP, 10 ft. hay head, 6R  
Kemper head, **\$102,000.**  
**717-776-4963**

**KELLER'S FARM MACHINERY**  
116 Richlandtown Pike  
Quakertown, PA 18951  
**215-536-4046**

- Ford 1700 w/Ford loader
- Ford 335 loader, 3 pt PTO
- Ford 7610, 4x4, cab & loader
- Ford 345D Loader, 3 pt PTO
- Ford TW15, 4x4, w/cab
- Ford TW20, 4x4 w/cab
- Ford 7610, Series II, 4x4, new paint
- Ford 2000, offset w/1R cultivator
- Ford 1520, 4x4 w/Ford loader
- Ford 7600 Dual Power, Cab
- Ford 3930, 4x4 Cab, Air, Loader
- Ford 4630, 4x4 cab & Ford loader
- Ford 3400 Gas w/Forklift
- Ferguson 30, real nice
- AC D-17, PS, 3pt. Hitch
- JD 1520D, 3 pt., WF
- MF 1040 4x4 Loader/backhoe
- Ford 5600 w/Dual Power
- Gleaner K combine, w/grain & corn head

**MILLER EQUIPMENT CO.**  
RD 1, Bechtelsville, PA 610-845-2911

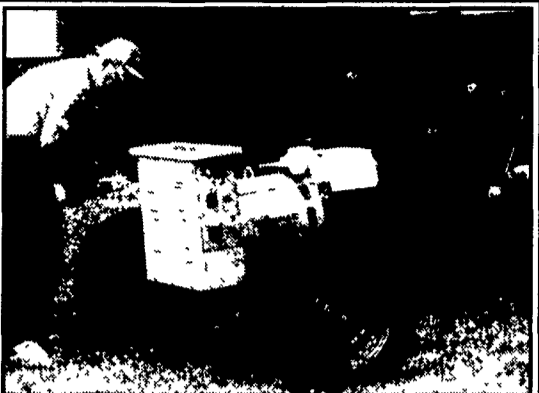


- NEW EQUIPMENT IN STOCK**
- MASSEY FERGUSON
  - MF 1250 4WD
  - MF 1428 V Compact
  - MF 1410 63" Front Mount Snow Blower
  - AGCO-NEW IDEA
  - 3739 Spreader
  - 3715 Spreader
  - 3743 Spreader
  - AGCO
  - Agco LT85 Tractor 4WD w/Cab
  - BRILLION
  - BRH 440 Row Crop Cultivator
  - 9 Ft Chisel Plow
  - FCPH 23 Sub Soiler
  - KUHN
  - EL 35-130 Tiller
  - GM 400 Disc Mower Demo
  - GF22T Gyro Tedder
  - GEHL
  - BU 980 Forage Box, 18 ft
  - MS 1217 Spreader
  - 1315 Scavenger Spreader
  - 4835 Skid Loader
  - 1085 Forage Harvester w/Crop Processor
  - 2345 Disc Mower Conditioner
  - AGCO-WHITE
  - White 8100 4R Planter

- USED EQUIPMENT FOR SALE**
- Agco Allis 8610 4WD Tractor w/Cab
  - MF81 Haybine
  - Deutz Fahr 9'3" Disc Mower Conditioner
  - Kuhn GA 300 Gyro Rake
  - Gehl 1000 Forage Harvester

**NEW IDEA GEHL**  
We Ship Parts - UPS

**GENERAC PTO GENERATORS**



Don't wait until the emergency strikes. Make sure that you have the power you need before the electricity goes out. Generac has 25, 40, 60 KW PTO generators for delivery.

**MOELLER SALES, INC.**  
**1-800-346-2348**

**JD Crawlers**  
Parting out MC, 40, 420, 440, gas and diesel  
Blades, Loaders, 3-pt parts, Tracks, Sprockets, Rollers, Idlers, Trans., Track Frames, Grille Guards, Seat Frames, Fenders, PTO's, Covers, PTO, Belt Pulleys, Sheet Metal, Belly Pans, Used and New Steering Clutches NOS MC parts

- Fresh In For Salvage**  
JD 50 P/S good tin  
JD A long hood good tin  
JD B long hood  
(2) M's  
(2) MC's  
(1) 420 C with winch  
430C with complete 3 pt Hitch, Hard nose Kit, HD Belly pans, Rubber pad tracks, N.O.S., Hood

**New Steering Clutches**  
Fiber, \$18.00. Steel, \$22.00.  
Pressure plate, \$85.00  
new prices  
**Wanted: Crawlers & Tractors**  
Dead Or Alive  
We also part out Wheel Tractors

**Stone & Parrish**  
RR#6 Box 6245P Montrose, PA 18801  
**570/278-1910**

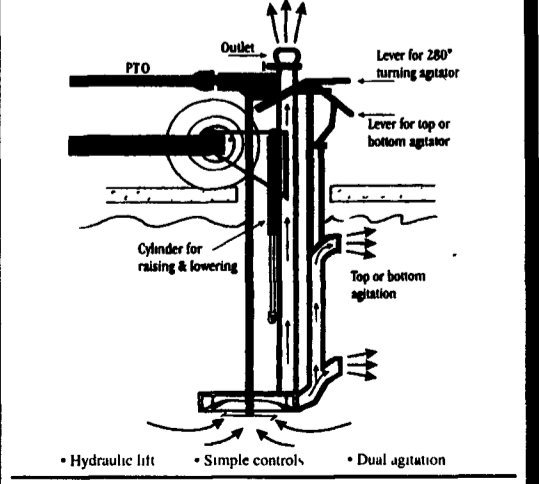
**USED EQUIPMENT**

- New Idea 5209 Discbine, Sharp! . . . . . \$9,200
- NH 892 Harvester w/Table . . . . . \$4,800
- Vermeer 504H Baler, Nice . . . . . \$5,800
- Case IH 8420 Baler, Like New . . . . . \$7,000
- NH L452 Skid Loader w/Wisconsin Engine . . . . . \$4,750

**USED TRACTORS**

- Case Comfort King 930 on Steel w/ Pulley . . . . . \$4,400
- IH 1066, Cab & Air, Sharp . . . . . \$10,500
- IH 1466, Rebuilt engine . . . . . \$12,000

**Liquid Manure Pit Pumps**



**MILLER'S REPAIR**  
1 Mile North of Bird in Hand  
8 Miles East of Lancaster  
**Ph. 717-656-6109**