

Public Auction Register

Closing Date Monday 5:00 P.M.
of each week's publication

Internet Sale Register will be updated
by Friday at 12 Noon

ATTENTION AUCTIONEERS
All sales register info needs complete address,
street, town, county & state.

WED DEC 18 & THURS DEC 19 - Marion Auction Service, 5174 Horst Road, Chambersburg, Pa 717 375-4700

THURS DEC 19 - 3:30PM General Auction, Col Kirk's Auction Gallery, 2267 State Rt 42, Millville, Pa 6 Mi N of Bloomsburg/2 Mi S of Millville, Col Kirk S Williams, AU-002623-L, 570-458-6682

FRI DEC 20 - Public auction of preserved 105-acre farm in East Amwell Twp, Hunterdon Co and preserved 82-acre farm in Delaware Twp, Hunterdon Co by N.J. State Agriculture Development Committee 800-474-5314

FRI DEC 20 - 9Am Horse sale Mel's Stable, 834 Wallace Rd, New Holland, PA 717-354-8397

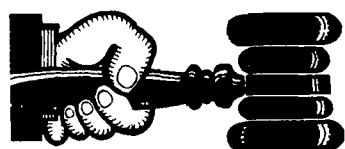
FRI DEC 20 - Farm Mach, tractor, pers prop at 320 Clay School Rd, Ephrata, Lanc Co PA by Kline Kreider & Good Auct #499, #2116, #3433 717-733-1006

FRI DEC 20 - 6PM General Auction Col Kirk's Auction Gallery, 2267 State Rt 42, Millville, Pa 6 Mi N of Bloomsburg/2 Mi S of Millville, Col Kirk S Williams, AU-002623-L, 570-458-6682

SAT DEC 28 - 9AM Real estate, 44 acre farm at 717 Letort Rd, Washington Boro (Millersville area) farm mach, pers prop Helen M Barley (Mrs Frank M Barley) By Kline, Kreider & Good Auctioneers, Lic #499, #2116, #3433

SAT DEC 28 - 11AM Horse Sale Middleburg Livestock Auction Sales, Inc PO Box 185, Middleburg, Pa Clarence Shirk and John Shirk, owners 717-656-8793

SAT DEC 28 - 10AM Utility trucks & equip, passenger vehicles, trucks, construction & farm machinery 1450 New York Ave, Wilmington, DE 302-573-5005 Natonwide Auction Sys



AUCTIONEER'S DIRECTORY

Call 717-626-2191 to list your auction service



John D. Stauffer Auctioneers

1484 Mountain Road, Manheim, PA 17545
Fulltime Courteous Professional Auction Service Since 1976

Real Estate • Farm Equipment • Antiques
Personal Property • Livestock
Phone 717-665-5099 AU-1509-L



410 W. Church Rd. Ephrata, PA 17522 (717) 733-3511 AU2280-L
Real Estate • Farm Equipment
• Antiques • Household Goods
It doesn't cost to use our Auction Service...It Pays.
CALL TODAY!!



Bringing More!
HORNING AUCTION SERVICE
• Personal Property • Real Estate
• Agricultural • Commercial
CURVIN M. HORNING - AUCTIONEER
150 N Shirk Road New Holland, PA 17557 License No. 3956-L
Phone No. 717-351-0377



KLINE, KREIDER & GOOD AUCTIONEERS
COMPLETE PROFESSIONAL AUCTION SERVICE
REAL ESTATE - FARMS & RESIDENTIAL
LIQUIDATIONS - ANTIQUES -
FARM MACHINERY - LIVESTOCK
RANDAL V. KLINE AUCTIONEER-REALTOR 717-733-1006 AU #499
ROY E. GOOD, JR. AUCTIONEER (717) 445-4309 AU #2116
www.klinekreidergood.com



Alvin & Elton Horning • Merle Eberly AU-2417-L
C Ivan Stoltzfus 3920-L
Morgantown, PA (610) 286-5183
>> Courteous Real Estate Services
>> Professional Auctioneers
>> State Certified Appraisers
>> Specializing in Farms and Land

ESTATE AUCTION

Machinery Auction -
Atlantic Gear & Machine Co., Inc.
SAT., NOV. 23, 2002
@ 10:30 AM
3905 W. 9th Street, Trainer,
Delaware County, PA.

Selling: Full set of micrometers and tooling available; **Turning Equipment:** A. LeBlond H.D lathe-20 inch O.D. x 6' centers, 3 Jaw Chuck; **Gear Cutting Equipment:** A #7 type high-speed gear shapers - 7 inch diameter, 2 inch face, internal spur & helical. B. #8 AGS Fellows gear shaper - 8 inch diameter, 2 inch face. C. #625 Fellows gear shaper, 18 inch diameter x 5 inch face internals & spurs. D. S-800 Leibherr Hobber, 26 inch diameter, spur & helicals, Model #5800. E. #3, 6-10 Barber-Coleman Hobber-6 inch O.D. x10 inch length spurs & helicals. F. Mach #8-36 inch G&E Hobber, 36 inch diameter x 18 inch face helicals, spurs & worm gears. G.#2C Sykes gear cutter-24 inch diameter, heringbone gears-12 inch face, 4 DP, Diametric Pitch Mdch #926B, Shop #T5322P. H. #12 Gleason bevel gear generator-20 inch diameter, war finish, J. Kop 98938, Parkson gear tester, to check centers 26 inch. **Gear Shaving/Lapping Equipment:** #GCI Red ring gear shaver-18 inch diameter, spur, helical with crowning. **Drill Press:** Powermatic three spindles-bench type #3 Morse taper. **Key Cutting Equipment:** #4 oil gear horizontal broach, 60 inch stroke over 25 Broach units. **Miscellaneous/Inspection Equipment:** Forte automatic saw, 12 inch capacity, full bar support racks; Black diamond drill grinder, 1/4 to 2 1/2 inch diameter, #22 Heald Fellows cutter grinder; #LO 809 comparator, 14 inch screen; Rockwell hardness tester with full test gauges; Taft/Pierce test centers-8 inch O.D.x36 inch long; Two electrical transformers...**HYSTER FORKLIFT 1985, 5200 lbs., 54 inch Forks, 442 hours, propane-Excellent Condition.**

All machines were in full operation as of October 1, 2002. Most are fully tooled with full collets and cutter tooling. Any questions call G.R. Giesler @ 1-800-428-8641 or email gieslereng@aol.com.

OPEN HOUSE: Thursday and Friday till 6:00 PM prior to sale.

Directions: 9 miles south of Philadelphia, 6 miles north of Wilmington, DE, 2 miles from Commander Barry Bridge, 1 mile from I-95 @ Chester. Absolute Auction. No Reserves or Minimums.

George H. Wilson, Auctioneer, AU-001020-L (610)593-7290 email ghwauction@aol.com http://georgewilson.freehomepage.com

WE'RE CHANGING!
Effective NOW you can contact
Shelley Ashcroft at 717-626-2191 (press 5);
fax: 717-626-1210 or email:
sashcroft.eph@lnpnews.com
to place your Public Sales advertising
in Lancaster Farming



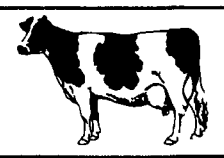
Dairy and Livestock Sales

FOUR STATES LIVESTOCK SALES

Consignment for
Wednesday, November 13
50 Crossbred Stock Cows
Wormed, Vet Checked, some with calves
100 Limousin Sire Feeders
400-700 Lb. wormed, weaned, Vacc.
Selling 7:30 PM
in Hagerstown Md.
301-733-8120

Dairy and Livestock Sales

NEW HOLLAND SALES STABLES, INC.



New Holland, Pa.
Located 12 Miles East of Lancaster, just off Rt. 23

DAIRY SALE - WEDNESDAY, NOV. 13, 2002

10:00 AM BRED HEIFERS, SHORTBREDS & OPEN HEIFERS
11:45 AM BULLS
12:00 NOON FRESH COWS & SPRINGERS

Weekly Consignors
• Merle Breneman • Leroy Smucker
• Marvin Eshleman • Dale Hostetter

Load of Fresh Cows from Canada

We expect a Big run of Open and Shortbred Heifers
Reg & Grade Bulls with Top Pedigrees Service Age

25 Cows Sell From A Herd -- Year Around Calving!!!

NOTE TO CONSIGNORS!

Please send all information along with your cattle Tues. Fresh Date, Breeding Dates, Milk Weights, with your trucker.

Sale Managed By
New Holland Sales Stables, Inc.
Barn 717-351-4311 Fax 352-0706
David Kolb, Mgr. 61L

JOY-WIL HOLSTEINS COMPLETE DISPERSAL

FRI., NOV. 15TH *11:00 A.M. * OXFORD, PA
SALE RING PHONES: 484-368-6195; 610-864-5473; 607-435-0792

160 Holsteins With Tremendous Production, Components & Type!

Many Sell Milking Over 100 lbs! An Awesome Set Of Bred & Open Heifers!
Many Fancy Calves Born To Show!

RHA: 23,803 Milk 3.6% 846 Fat 3.1% 727 Protein.

8 Excellent Young Cows, 28 VG Young Cows & Many Fancy Young Cows Never Scored Before! Herd Will Be Classified Just Prior To Sale Day!
One of the Highest Quality Herd Dispersals in 2002

* The greatest sires of the past & present are well represented: Daughters of Durham; Storm; Mandel; Jolt; Red-Marker; Emory; Rudolph; Outside; Lee; Rubens; Skychief; Cousteau; Convincer; James; Gibson!

* 40 members of the incredible Patsy family sell! Patsy was 3E-93-GMD-DOM w/8yrs 365d 29,192 4.3 1250 3.3 963 & the dam of 6 EX & 10 VG daughters! The entire family sells! Twin Convincer heifers sell bred to Storm & Stormatic from VG-85 dam w/32,150 1007F, grdam VG w/25,180 968F & 3rd dam "Patsy!"

* VG-86 Storm sells w/2-02 350d 22,950 4.4 1010 3.3 762 due 6/20 to Outside & making over 1000f again at 3yrs! Dam VG-86 w/27,810 3.6 990 & grdam "Patsy!" VG-87 Milan dtr w/25,661M 860F sells due 12/5 to Storm! Dam is EX-90 w/27,910 935F & grdam "Patsy." Lee dtr born 11/20/01 from the VG-87 Milan dtr also sells!

* EX-92 Rudolph dtr sells milking 91lbs & safe in calf to Outside! Dam is VG-87 w/124,000lt, grdam VG-87 w/127,000lt! Her dtr by Red Marker also sells born 6/16/01!

* A VG-86 Rd, Jewel-Red dtr sells w/4yrs 365d 27,040 3.9 1064, due 11/21 to Red-Marker! Dam VG-85 w/34,250M 1148F & grdam 2E-92 w/36,060M 1277F. Her 6/10/01 Red-Marker dtr also sells!

* VG-86 Mandel dtr sells w/2-00 365d 30,800 3.2 988 2.9 896 & due 11/20 to Outside! Dam is VG-88-GMD w/36,260 4.9 1783 2.9 1042, grdam VG-87 w/30,170 4.1 1231! Next 3 dams all EX!

Future Herd Sires Sell

* Durham son sells from EX-92 Rudolph w/EX/MS & 27,770M 953F, born 6/22/02!

* Red Marker son born 9/30/01 sells from EX-92 Skychief dam w/4yrs 369d 32,310 945F 1004P. Grdam VG-85 w/104,000LT.

* BW Marshall son born 2/5/02 sells from VG-86 Aerostar dam w/28,390 3.5 1001, grdam VG-89 w/26,380 3.7 986 & 3rd dam VG-85 w/1076F.

COMPLIMENTARY BREAKFAST SALE MORNING 8:30-10:30 A.M.

For Pre-Approved Financing: Contact Karen Cartier From Agri-Financial Services At 1-888-858-7811 Ext. 5669. Applications Must Be Received Within 48 Hours Of Sale Date For Pre-Approvals.

Terms of Sale: Cash or good check sale day!

Herd Health: Cattle are tested for immediate interstate shipment, pregnancy examined & inoculated against shipping fever.

Directions: Farm is about 1/2 hours from Harrisburg. From Harrisburg take Rt. 283 south to Rt. 30 east to Rt. 41 south to Rt. 10 south about 5 miles. At Grain Elevator turn right on Hayesville Cream Road & farm on left. From Philadelphia, take Rt. 1 south to Rt. 10 north & turn left at Grain Elevator onto Hayesville Cream Rd. Farm is just 3 miles north of Maryland line.

SALE MANAGED BY CATALOGS



OWNERS: JOY-WIL HOLSTEINS

Wilmer Hostetter & Family
Hayesville Cream Rd., Oxford, PA 19363
610-932-8664 John 610-932-4484 Wilmer

Dave & Merry Rahn, PA License AU-002463-E
4236 County Highway 18, Delhi, NY 13753
Ph: 607-746-2226 • Fax: 607-746-2911
email: cattlex@catskill.net
website: www.cattlexchange.com