

CERTIFIED GENERAL APPRAISER

Horning Appraisal Services, Inc.
 Specializing in Farms & Land
 Agriculture Conservation Easements
 Philip Horning GA-000856-LP
 P.O. Box 215, Morgantown, PA 19543
 Phone: 610-913-0880
 Fax: 610-913-0881

Farmers Invited!

Lewis County NY invites you to preview
 our **FREE FARM VIDEO**.
 We have farmer friendly
 communities, reasonable
 land prices, and strong local milk
 markets.
 Visit www.FarmLewis.com or call
 1-800-724-0242 Ext. 57

Your Key to Sullivan County

Robin REAL ESTATE
 BROKER/OWNER
 Licensed to SELL in
 Pennsylvania #RB-060980-L
 www.robinrealestate.com
 Eagles Mere
 (570) 525-3929
 Muncy Valley
 (570) 482-2912

SHUNK
 Cabin near Hoagland Branch Stream, \$47,000
 WAAAAAYYYY back in! 5 wooded acres bordering State
 Lands \$25,000

BEAVER LAKE
 Building site with community sewer. Wooded. \$9,000
 Log house with view of lake. \$119,900

BRADFORD COUNTY, PA
 4 wooded acres within walking distance to SGL #12. \$14,900
 332 acres, Panoramic view from this like new house. 2 lakes,
 timber value on the 150 acres of woods, bear dens, waterfowl
 and deer! \$679,000

BEAUTIFUL POTTER COUNTY



This 30 year young dwelling is stone & frame with
 plenty of large windows to appreciate the views - 3
 large bedrooms each with 2 closets with built in draw-
 ers - 2 stone fireplaces - kitchen with all the built - ins
 2 75 baths - basement has large windows & finished
 with full kitchen facilities - bath, family room & fire-
 place This home is in the heart of Potter County on
 183+/- acres - on top of the mountain where you can
 see for miles around **Asking \$350,000. G-6220**

Stevens Real Estate
 Rt. 6, 1 Mile East of Gaines
 Gaines, PA 16922
 814-435-6558 or 888-435-6556
 www.stevensrealtors.com

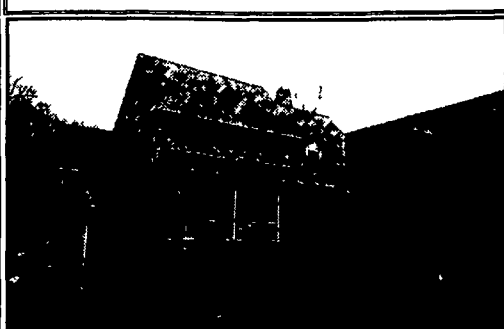
YORK CO. LAND PARCELS:

27 acres development land York, New Salem area,
 public water now, sewer in future. \$225,000
 50 acres East Berlin area, all open land, fronts 3
 public roads. \$210,000
 32 acres East Berlin area, mostly open land,
 fronts on two public roads, ideal building site,
 high overlook of Conewago Creek. \$180,000
 5 acres near Codorus State Park, open land suit-
 able for horses, etc. \$75,000

ADAMS CO. LAND PARCELS:

38 acres, part wooded, overlooking Conewago
 Creek, great hunting, possible subdivision, public
 sewer adjoins property. \$210,000
 Specializing in farms, land & horse farms in York
 & Adams Co., Pa.

Dan Rodgers or Travis Lippy
RE/MAX QUALITY SERVICE,
 300 Frederick St.,
 Hanover, Pa. 17331
 Phone 1-800-634-0081,
 Website: www.realtor.com/york/danielrodgers
 or Pahomesandland.com.
 Each Office Independently Owned and Operated



1509 Brunnerville Road, Lititz
 Lititz Area, Lancaster County — 18th Century
 Reproduction Farmhouse with 4 bedrooms, 2 1/2 baths
 on 10 secluded acres with stream & pond 3 car garage
 30x52 bank barn Fenced pasture Truly one-of-a-kind!
 Don't miss this one! \$739,000 Contact Paul today
717/951-9621
RE/MAX Associates of Lancaster

67 Acre Bucks County Farm Estate



Famous registered Black Angus operation for 32 years.
 Private setting with beautiful restored stone farmhouse
 and 2 bedroom carriage house overlooking huge pond.
 Original barn with 12 stalls including maternity pen,
 large 110'x40' storage barn, Penn State designed corral
 with Frey Special chute, 4 ton feed bin with electric
 auger, pole barn, and separate bull barn. Eight fenced
 pastures with heated Ritchie water bowls. All fields up
 to date with lime. Adjacent 15 acre lot available sepa-
 rately. A true Bucks County gem!
 Offered for **\$2,800,000**. Call Vivian Greene
COLDWELL BANKER HEARTHSIDE
 at 215-794-7272, ext. 136.

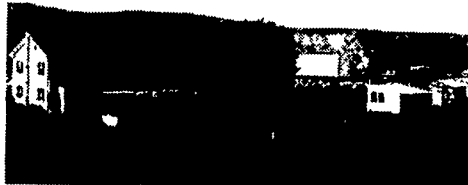
We've Moved - Visit us at
3703 Peters Mountain Rd., Halifax, PA



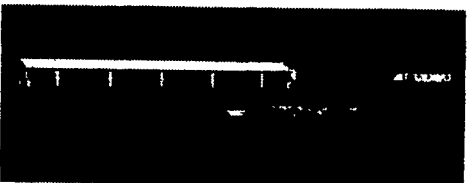
907 - HALIFAX - 73+/- ac farm w/
 totally remodeled log house, new
 hardwood floors & ceramic floors. Great country
 location, new septic. A must see! **\$395,000.**



945 - HALIFAX - Farmette w/8+ ac, stocked
 spring fed pond, 3BR, 2 bth. Remodeled farm
 house w/great room & new kit. Tranquil set-
 ting. Bank Barn, workshop, gar & more.
\$168,500.



946 - HALIFAX - Farm w/40.9 ac's on 2
 parcels. Totally redone house & barn, new
 kit. & updated bth., 4 BR - large pond on
 south side of road. Great view. **\$415,000.**



960 - HALIFAX - Chicken farm w/35+ ac's
 farm ground, 2 story 44x260 all auto barn.
 \$40+ income from barn 1994. 3 BR, 14x76
 mobile on farm. Good opportunity. Farm
 ground rented. **\$299,900.**

Century 21 Carl Snyder
 Please Call Carl or Carmen 717/896-8808,
 or Carl 717/979-8042
 www.century21snyder.com

CALL COLDWELL BANKER

NEW! FREE VIDEO TOURS AVAILABLE ON CD
CENTRE COUNTY



Nittany Valley - 102 acre general farm with 77 acres
 tillable, 7 acres pasture, 16 acres woodland, and 2 acres
 site area. Very nice home, two story bank barn, implement
 shed, nice setting away from traffic. View our complete
 brochure and 30 picture slide show at www.cbur.com or
 call for details. **Price Reduced to \$449,500**

FREE CD video tour available

*If You Want the Most Complete Farm and Rural
 Property Marketing Plan Available Visit the Farm and
 Rural Property Division at www.cbur.com
 View farm, farmette, rural acreage, woodland and cabin
 brochures and slide shows. If you don't have Internet
 access call toll free for detailed brochures and list.*

HUNTINGDON AREA



Huntingdon Area - 11.3 acre property with excellent
 28x42' ranch home, approx 4 acres open, balance
 wooded Small stream, quiet, private setting, easy
 access, 30 minutes to State College \$165,000
FREE CD video tour available.

HUNTINGDON COUNTY



New Listing Warriors Mark Area - 17 acre general
 farm, 69 acres tillable, 33 pastures, 2 acres
 site, 2-story bank barn, 2 stall dairy barn, 2
 silos. Nice setting, small stream, no house.
 \$295,000. Complete brochure and 26 picture
 slide show at www.cbur.com or call for details.
FREE CD video tour available.

UNIVERSITY REALTY
 126 E. Foster Ave. State College, PA 16801
800-669-4925 Toll Free

COLDWELL BANKER

NEED A MORTGAGE?

We are the alternative to
 conventional institutional
 mortgages. Our money
 comes from private
 sources. Therefore, we
 can be flexible in arrang-
 ing mortgages to suit
 individual requirements.
 Also, possible leases
 with options to buy.
 If a mortgage is too big
 for the Red Neck
 Mortgage Company, we
 have direct access to
 several major Wall
 Street firms where
 nothing is too big.

THE RED NECK MORTGAGE CO.
 Licensed PA Dept. of Banking
814-355-8500

NEW HORIZONS REAL ESTATE CO.

COUDERSPORT AREA -
 3 yr. old home on 3.35
 country acres 3 BRs, 2 full
 BAs, equipped kitchen &
 DR w/oak cabinets, large
 rear deck & shed
 Excellent hunting area.
\$94,900.

39 ACRES - Mostly
 cleared & tillable.
 Clearfield County near
 Sanborn. Excellent hunting.
\$44,500.

18 ACRES off Rt. 144
 between Renovo and
 Moshannon to Beech Creek
 Mountain Road. Great pri-
 vate camp site. **\$28,000.**

WOODWARD AREA - 2
 year old, 2 story house on
 42 private acres. 2400 sq. ft.
 of living space/log interior.
 30 ft. ceiling in LR/fireplace.
 Spacious kitchen. 3 car
 garage. PLUS 6000 sq. ft.
 bldg. (heated & central air)
 Great hunting area
\$550,000.

(814) 355-8500
 www.newhorizonrealestatepa.com

GOD'S COUNTRY REAL ESTATE, INC.

116 NORTH MAIN ST.
 COUDERSPORT, PA 16915
 (814) 274-7640

FAX (814) 274-7642



Excellent buy for the year round sportsperson — attractive three
 bedroom lodge with attached garage. Horse barn and two sheds. Fine
 country setting on 10 acres, close to state forest lands in the Denton Hill
 area. Snowmobile from door onto approved trails.
 Property is in excellent condition. **\$135,900. #845**



Home price reduced — Older two story three bedroom home in Coudersport
 Boro. 2 baths, gas heat, detached one car garage. Was \$82,900.
Now \$67,900

Just far enough - but not too far from town — 8+ acres in Ulysses
 Township bordering Emmel Road. New survey, has sand mount septic
 approval, electric available. **\$25,000. #853**

Leave your problems at home — and head to this getaway in the beau-
 tiful mountains of Potter County, PA. 2 bedroom mobile home on 13 +
 acres in Ulysses Township, all wooded setting with hardroad frontage.
 Plenty of seclusion. **\$48,500. #852**

Great Investment — One story home with attached carport and work-
 shop on a country lot in Sharon Township, would make an ideal camp
 property. Was \$19,900. **Now \$16,900. #848**