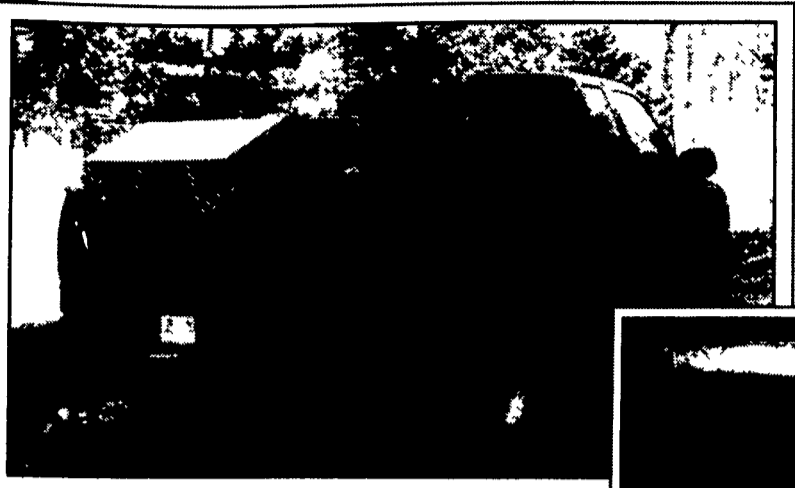
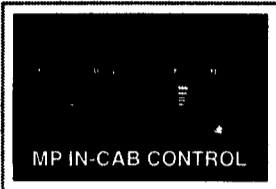
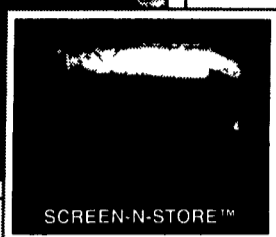


MP MODEL P



The MP pick-up mounted deicing spreader features the following:

- Patent-pending Screen-N-Store™ prevents over-sided material entering the hopper and doubles as an off-season storage stand.
- Easy-to-remove spinner assembly to facilitate service and storage.
- Fully welded and sealed hopper to resist corrosion.
- Three MP packages available with Tecumseh, Briggs & Stratton, or Honda engines.
- Unpainted 304 stainless steel option for added resistance to corrosion.



For more information contact:

ANNVILLE EQUIPMENT CO.

470 Palmyra-Bellgrove Road, Anville, PA 17003

717-867-4631 1-800-233-0520

E-mail: aeci@paonline.com Web Site: annvilleequipmentcompany.com
We provide parts & service for new leader spreaders.



Building the best since 1939.



| | | | | | | | | | | | | | |
|---|--|--------|---------|--------|---------|--------|---------|--------|---------|--------|---------|--------|---------|
|  <p>1,495</p> <p>16-ft with Self Storing Ramps, Diamond Plate, Electric Brakes on both Axles 2-3,500 lb Axles, Break Away Kit, Safety Chain, Full 82-in Wide Between the Fenders with Dove Tail</p> |  <p>2,995</p> <p>24-ft Gooseneck w/20-ft Deck & 4-ft Dove Tail, Electric Brakes on 6,000 lb Axles, Gross GVW 12,000 lbs Stake Pockets, Rub Rail, Self-Storing Ramps, Adjustable Coupler</p> | | | | | | | | | | | | |
|  <p>3,600</p> <p>7 x 12 Gooseneck Dumper, 10,000 GVW, Self Contained Deep Cycle Marine Battery, Brakes on both Axles, Steel Bed, Adjustable Coupler, Stake Pockets, Rub Rails</p> |  <p>2,450</p> <p>16-ft Equipment Trailer, 10,000 GVW Wood Deck 79-in Between the Fenders, Drop Axle Stand Up Ramps, Channel Fenders, Chain Basket</p> | | | | | | | | | | | | |
|  <p>4,750</p> <p>20,000 GVW</p> <p>23-ft Long 18-ft Deck & 5 ft Dove Tail, Dual Tandem Adjustable Pintle Plate, Oil Bath Axles, Spring Assist Ramps, Break Away Kit</p> | <p>Accessory Pkg \$285.00</p> <p>SINGLE AXLE TRAILERS</p> <table border="1"> <tr> <td>6 x 8</td> <td>\$1,700</td> <td>6 x 10</td> <td>\$1,850</td> </tr> <tr> <td>6 x 12</td> <td>\$2,000</td> <td>6 x 14</td> <td>\$2,150</td> </tr> <tr> <td>7 x 10</td> <td>\$2,370</td> <td>7 x 12</td> <td>\$2,545</td> </tr> </table> | 6 x 8 | \$1,700 | 6 x 10 | \$1,850 | 6 x 12 | \$2,000 | 6 x 14 | \$2,150 | 7 x 10 | \$2,370 | 7 x 12 | \$2,545 |
| 6 x 8 | \$1,700 | 6 x 10 | \$1,850 | | | | | | | | | | |
| 6 x 12 | \$2,000 | 6 x 14 | \$2,150 | | | | | | | | | | |
| 7 x 10 | \$2,370 | 7 x 12 | \$2,545 | | | | | | | | | | |

Let Us Custom Build Your Trailer

Appalachian Manufacturing, Inc.

Phone 330-222-2468 www.appalachiantrailers.com Fax 330-222-2283

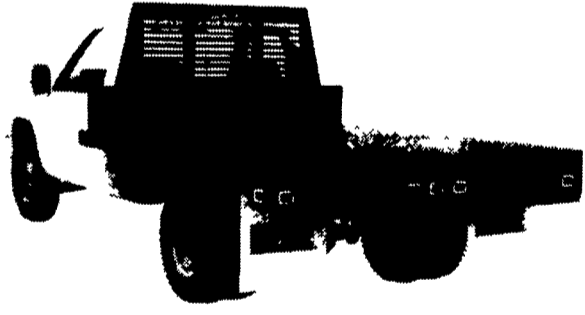
| | |
|---|---|
|  <p>01 Ford F250 XLT 4x4 7.3 Power Stroke Diesel, 6 sp., A/C, PW, PL, Cruise, Tilt, Cas/CD, PMirrors, 8,600 GVW, 3.73 Ltd slip rear, 26,000 Mi., Teal Green</p> <p>\$25,400</p> |  <p>97 Ford F350 XL 4x4 7.3 Power Stroke Diesel, 5 Sp., A/C, AM/FM Cas, Diesel Tanks, New Tires 9000 GVW, 4.10 Ltd Slip Rea, 6,900 Mi., Dr. Green</p> <p>\$18,400</p> |
|---|---|

MARTIN'S AUTO SALES

1025 W. Main St., New Holland, PA 17557
(717) 656-6621

HOSTETLER

Truck Bodies & Trailers
717-667-3921
Milroy Exit off Rt. 322
Between Lewistown & State College



Steel Flatbeds

- (9) Cadet 8' Single Wheel Pickup Platforms, Bulkhead, Rear Skirt, With or Without Gooseneck Compartment
- (3) Cadet 9' Dual Wheel Truck Flatbeds, Bulkhead, Rear Light Skirt, Gooseneck Compartment
- Knapheide 9' Dodge Gooseneck Flatbed, Bulkhead, Rear Skirt, Rubber Mounted Lights

Aluminum Flatbeds

- (3) Cadet 8' Single Wheel Pick Up Platform, Bulkhead, Rear Light Skirt, Gooseneck Compartment
- (4) Eby 9' Dual Wheel Platforms, Bulkhead, Gooseneck Compartment, IC Bumper with Hitch



Landscape Trailers

- (16) Single Axle Utility Trailers, Tilt or Ramp Gate Starting At \$595.
- (3) Tandem Axle Utility Trailers, Ramp Gate, 7000# GVW Starting At \$1750.
- US Cargo 16' Tandem Axle, Rear and Side Ramp, Dovetail, 7000# GVW, Was \$2,595, Clearance Price \$2,235.
- US Cargo 20' Tandem Axle, Rear and Side Ramp, Dovetail, 10,000# GVW, Was \$2,995, Clearance Price \$2,595.

Loader & Equipment Trailers

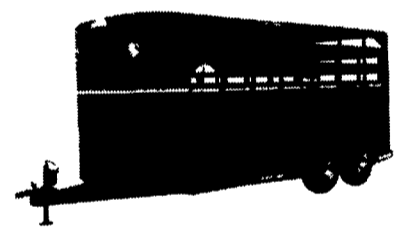
- (2) Moritz 16' Loader Trailers, Torsion Axles, Ramps, 9950#
- Moritz 18' Loader Trailer, Torsion Axles, Ramps, 9950# GVW
- Moritz 18'+4' Equipment Trailer, Deckover Dovetail
- Moritz 20' Deckover Equipment Trailer, Torsion Axles

Gooseneck Flatbed Trailers

- Moritz 16'+5' Flatbed, Adj Dovetail, 14,000# GVW
- Corn Pro 20'+5' Flatbed, 3 Ramps, 14,000# GVW

Hydraulic Dump Trailers

- E Z DUMPER 6' x 10', 10,000# gvw, Dump Thru Gate
- MORITZ 6'8" x 10' Low Pro Dump Rams, 9,950# GVW
- Hostetler 8' x 12' Aluminum Deckover Dump, 20" Sides, 26" Front & Gate, Scissor Hoist, 10 or 12000# GVW



Steel Livestock & Horse Combo Trailers

- (2) Moritz 6'x16' Bumper Pull Livestock, 7000# GVW, Corn Pro 6'x16' Bumper Pull Livestock, 7' High
- Moritz 2 Horse Slant Load, Dressing Room, 7' High
- Moritz 6'8"x16' Bumper Pull Livestock, Heavy Axles
- Moritz 6'8"x18' Gooseneck, 7' High for Horses

Eby Aluminum Livestock Trailers

- Maverick 6'8"x16' Bumper Pull, Heavy Axles, 16" Radials
- Maverick LS, 6'x16" Gooseneck, 10,000# GVW, 16" Radials
- Maverick 6'8"x16' Gooseneck, 7000# Axles, 16" Radials
- (2) Maverick 6'8"x20' Gooseneck, 7000# Axles, 16" Radials

Eby Aluminum Horse Combo Trailers

- Maverick LS 6'x13' Bumper Pull, 7' High for Horses
- Maverick LS 6'x16' Bumper Pull, 7' High for Horses

Used Livestock & Horse Trailers

- Arnt 2 Horse, Walk Thru, Rear Ramp
- Was \$1550. Clearance Priced \$1150.

Misc. New and Used Truck Eq.

- Tamaqua 11' Dump Body, 212" Sides 20" Gate New Was \$1995. Clearance Priced \$1,595.
- Eby Used 12' Cattle Body, Aluminum, Good Condition Was \$1995. Clearance Priced \$1,695.
- 16' Aluminum Grain Body, Double Acting Tailgate, with Chute, 48" High Sides, H D Construction
- Knapheide Used 9' Service Body, Bottle Gas Compartment, Good Condition
- Used 12' Dry Freight Van Body, Double Rear Doors, 84" High Excellent Condition
- Used 16' Aluminum Dry Freight Van Body, Roll Up Rear Door 8 1/2' High Inside, Translucent Roof, Exc Cond