



178 MUDDY CREEK CHURCH ROAD
DENVER, PA 17517-9328
(717) 336-7528 • FAX (717) 336-4655
800-952-4228
www.mgsincorporated.com

OPEN DAILY 8-5
SAT. - Trailer Sales
By Appointment

TRAILER - - PARTS
SERVICE, INSPECTION
HITCHES INSTALLED
BRAKE CONTROL INST.

DRAW-TITE HITCHES
In Stock

Dealer For

WELLS CARGO

MGS INCORPORATED

Dealer For

BigTex
TRAILERS



UTILITY TRAILER



CAR HAULER TRAILER



UTILITY TRAILER

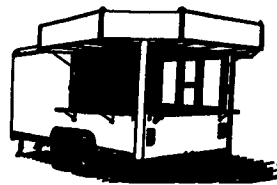
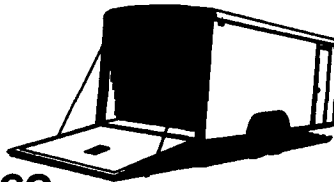


DUMP TRAILER



WELLS CARGO
PRICES
START AT:

5x8 = \$1975
6x10 = \$2675
7x12 = \$4868
8x20 = \$6476



BIG TEX PRICES
START AT:
4x8 = \$525
5x10 = \$825
5x12 = \$1025
6 1/2x16 = \$1750

Big Tex Trailers Also Available At:
EAGLE RENTAL CENTER
Rt. 272, Reamstown Traffic Light • 717-336-3945



MILITARY DUMP TRUCKS

10 wheel drive, turbo diesel, 5 speed, No CDL required, 17 ton hoist - PTO driven
Starting at \$7950
Stocking Military 5th Wheel Tractors, Wreckers, Cargos, Blazers, Pickups
Offering Complete Repair Service for All Military Vehicles
Pictures/Prices/Descriptions
WWW.ASTORY.COM/DEUCE
(215) 598-8227

Anthony L.

LANDIS
AUTO SALES

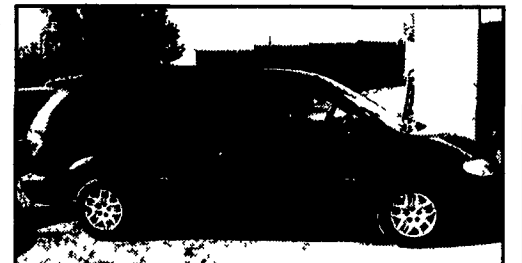
3394 Division Hwy., New Holland, PA 17557
Rt. 322, 1-1/2 mi. west of Blue Ball (717) 355-0644



95 Chevy Silverado 2500
Ext. Cab, 4x4

6.5 Turbo Diesel, AT, PW, PDL, A/C
117,000 Mi.

\$10,900



2001 Dodge Grand
Caravan Sport

V6, Dual Air, PW, PDL, Dual Climate Control, 69,000 Mi., Dk Blue

\$13,900

WILLIAM H. WESSELS
USED CARS

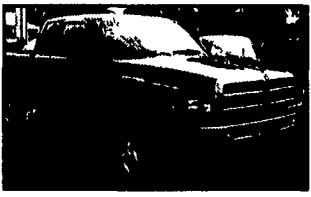
811 Route 15 Dillsburg, PA
1-800-440-4433 1-717-432-2918
Notary Public - Temporary Tags



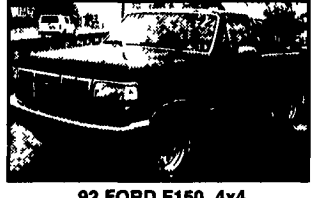
93 FORD F350 Enclosed Utility,
Diesel, Auto, AC, V. Nice, High Miles
\$6,990



2000 FORD BUCKET TRUCK,
Only 7,000 Miles, V-8 Auto & Air
\$24,900



99 DODGE RAM 1500 CLUB CAB,
4x4, V-8, Auto., AC, Only 15,358 Miles
\$20,900



92 FORD F150 4x4,
4.9 6 cyl; 5 Speed, 148,000 Miles
\$4,990



1996 DODGE RAM 1500,
Wheelchair Lift, 74,000 Miles,
\$6,990



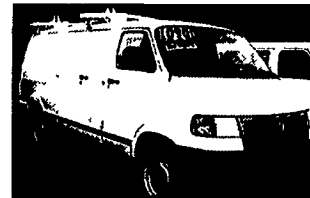
95 FORD F150 4x4, 4.9L
6 Cyl., 5-Speed, AC, 84,200 Miles
\$7,900



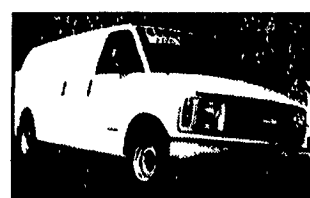
96 CHEVY K2500
Ext. Cab 4x4, 350 V-8, Auto, AC,
105,236 Miles
\$10,900



99 DODGE RAM 1500, Sport 4x4,
360 V-8, Auto., AC, 28,775 Miles, Red
\$17,900



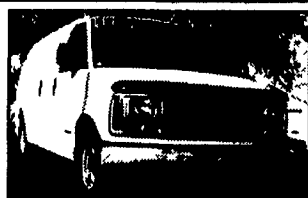
2000 DODGE RAM VAN 2500,
Cargo Van, 5.9 V-8, 59,000 Miles,
Auto, PS, PB, AC
\$10,900



2002 CHEVY G1500 CARGO VAN,
4.3 V6, Auto, Air, 10,000 Miles,
\$14,900



2000 DODGE RAM, Quad Cab,
4x2, 32,000 Miles
\$14,900



1999 CHEVY G1500 CARGO VAN,
Bins and Partitions, 91,000 Miles,
\$9,900



1984 FORD F-700 14 Ft.
FLATBED, 26,000 GVW, V-8
5-Spd., Only 3,400 Miles
\$10,900



01 DODGE RAM 1500
4x2, V-6, Auto., AC,
38,430 Miles
\$12,900



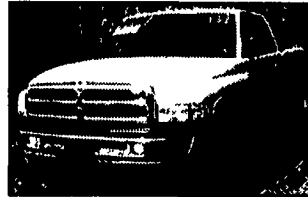
2000 DODGE DAKOTA, PICKUP
WITH UTILITY CAP, 3.9 V-6, Auto,
AC/Factory Warranty, 19,000 Miles
\$9,900



01 DODGE B1500 Ext. Cargo Van
V-6, Auto., AC, 35,000 Miles
\$14,900



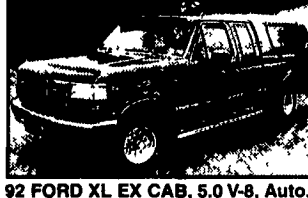
00 CHEVY K3500 CREW CAB 4X4;
350 V8; Auto., AC; Only 8,900 Miles
\$23,900



1999 DODGE RAM 4X4
Quad Cab, Auto., AC, Laramie SLT
48,000 miles
\$17,900



1987 INTERNATIONAL, 24 Ft. Box
Truck, DT-466-2, 5-Speed/2-Speed
\$4,990



92 FORD XL EX CAB, 5.0 V-8, Auto.,
AC, 85,000 Miles, Local Trade - Nice!
\$8,990



99 CHEVY SUBURBAN LT,
Nicely Equipped, 19,000 Miles.
\$25,900



1996 FORD 150, 4.9 Liters, 6 Cyl.,
5 Speed, AC, 53,000 Miles,
\$7,990

MARLEY GROSS
FORD Inc.
96 North Main St.
Spring Grove, PA 17362
Telephone 717-225-4765
marleygros@adelphia.net

- 02 Explorer XLT, V8, AT, PS, PB, PW, PDL, T/C, CD, 3K, red \$24,995
- 02 Windstar, 3k, SE, V6, AT, PS, PB, PDL, PW T/C, VCR, Red Call
- 01 Windstar LX, V6, Auto, PW, PL, Air, Tilt & Cruise, CD, 29,000 mi. \$16,995
- 01 F150 Reg. Cab, 4x4, XLT, 4.6 AT, CD, PW, PLX, S/T, 23K \$19,995
- 00 Villager Sport, 3.3, Hi AC, OD, PW, PDL, S/T, 59k \$15,995
- 00 Mercury Mountaineer, V8, Auto, PS, PB, AC, PW, PL, Tilt & Cruise, CD, Moon Roof, Leather Interior, 22,000 mi \$21,995
- 00 Villager Sport 3.3, Hi-AC, CD, PW, PL, XST, Moon Roof, 24K Green \$18,995
- 99 F150 Step Side, XL Sport, 4X4, V6, 5 Spd, AC, Cass, 90k, White \$11,995
- 98 Expedition EB, 4.6, V8, AT, PS, PB, PW, PDL, T/C, cass./CD, 63K \$18,995
- 97 F250 crew cab, 4x4, XLT, diesel, AT, PS, PB, PDL, cass., PW, T/C fiber glass cover, red, 105K \$18,995
- 91 Ford E350 Motor Home, Coachman 7.5, Hydraulic Leveler, 27 Ft., 35K, One Owner \$21,500
- 85 Ford F350 Roll Back, 7.5, V8, 4 Spd, 17 ft, Jerr Dan, 125k \$8,495

USED CAR BLOWOUT!

- 02 Taurus SES, 4DR, 3.0, AT, AC, PW, PDL, T/C, 18k \$13,495
- 01 Focus SG, 4DR, 2.0, AT, AC, D, PW, PLX, 12k \$12,995
- 01 Focus SE, 4DR, 2.0, AT, AC, CD, PW, PLX, T/C, 22k \$12,995
- 00 Focus SE, 4DR, 2.0, AT, AC, CD, PW, PLX, T/C, 22k \$10,895
- 00 Escort ZX2, 2.0, 5 spd, AC, PDL, PW, S/T, Cass, 20k \$9,495
- 99 Taurus SE, 4DR, 3.0, AC, PW, PLX, Cass, S/T, P-Seat, 27k \$10,995
- 98 Taurus SE, 4DR, 3.0, PW, PDL, AC, Cass, 44k \$8,995
- 92 Taurus GL, V6, AT, PS, PB, AC, T/C PW, PDL, Cass, PSeat, 48K, One Owner \$6,595

ALL PRICES INCLUDE FACTORY REBATES