

35 TRUCKS AND TRAILERS

'86 Accurate trash transfer trailer, 40 ft, good cond, \$7000 obo. 717-872-9152

Ford service truck, 1988, F350, recent new 351 eng, 5 spd trans recently redone, 12 ft Supreme service body equipped w/ lights, heater, vent, fan, body good shape, \$4900 obo. 717-738-2314

'87 IH COE, 300 Cummins, all new tires, good shape, \$5000. 717-392-0990

1987 CF7000 Ford Cab-over, 20' flatbed dump, 29,500 GVW, gd rubber, new insp. \$4,000/OBO. 570-992-3700, 7 a.m. - 5 p.m.

Storage Trailers. Sale, rent. 40' - \$950, 28' - \$750. Germak 717/944-2487

SAVE. STORAGE OR ROAD TRAILERS, 20' or 40' GROUND LEVEL CONTAINERS. PROMPT & COURTEOUS SERVICE. REASONABLE RATES. YOUR STORAGE SOLUTION, INC. 610/921-1955, 1/800-220-6082

Buy a pre-owned car or truck for auction net + 7% (Marhelm online). Eagles Nest Auto Buyers' Agent, Duncannon, PA. Toll-free 877/801-2230

2001 Dodge 2500 SLT 4x4, quad cab, 8', 5.9LV8, 5sp, fact. HD, trailer tow, leather, AM/FM/CD/CASS, Chrome Step Bars, 1 owner, 40k mi, \$23,500/OBO Call 610-562-5555.

95 Peterbilt 379, day cab, wet line, Cat 3406E 435hp 10-spd, 535,000 mi, very nice. 717-566-2689

'95 12 ton Eager Beaver trailer, 8ft deck, 19ft long w/5ft tail, air brakes, pintle hook, \$5500. 717-687-9805

1990 Dodge D350LE dually pickup, Cummins auto, PS, PB, PW, PDL, air, AM/FM CD, bucket seats, console, Banks intercooler & power pack, gooseneck & class III hitch. 215/257-1982

'78 Ford L800, 391 gas, auto, 2000 gal tank & pump, \$3000 obo. 717-665-5454

1992 Featherlite alum 3 horse slate load, GN, hay rake on top, lg dressing room, ex cond, \$8700 obo. 301-582-4068, 301-988-3477

2500HD Chevrolet factory chrome steel wheels & centercaps, like new \$300 obo. 610-944-8348

(2) office trailers, 10'x45' \$1,450; 8'x28' \$850. (2) 40' Van storage trailers, \$600/ea. (6) camper trailers, 16'-32' fair cond. \$400 - \$800 / ea. 717-464-4461 lv. mssg.

1992 Chevy Silverado 2500, 4x4, long bed, PW, PDL, cap, cruise, stong eng, 121k, \$7000 obo. 717-445-7463

95 1/2 Isuzu, w/reefer tk, elec. standby, 10', 192k, new insp. new paint, new mtr work, immaculate, \$11,900 / OBO. 570-746-1664.

'86 Chevy 3/4 ton p/up, 6.2 dsl, 4 spd, runs good, good body, \$3500 obo. 9ft Reading utility box, \$600 obo. 717-336-7846

1986 Ford F350 dump, 69,000 genuine miles, comes w/2 season old 8' snowplow, \$5000 OBO. 484/437-0929

1991 Int. 24' alum. flatbed, 138,000 mi. 717-284-9937

Ford 1987 6.6 dsl, complete take-out, 29,000 orig. mi, \$2000. 814-942-3821

'82 Ford L9000, single axle Cummins dsl, 8spd trans, runs good, rusty (neg) \$4995. Let's make a deal 570-739-4843 (has 11ft plow & chdr spreader)

'93 Ford F350 stake body, 7.3L dsl, automatic, 120,000 fair cond, \$5495. 570-739-4843

1993 Chevy Silverado 5sp stick, gd work truck, no rust, hi hwy mileage, AM/FM/CD runs great, serviced reg. \$5,900/OBO. 717-396-9050

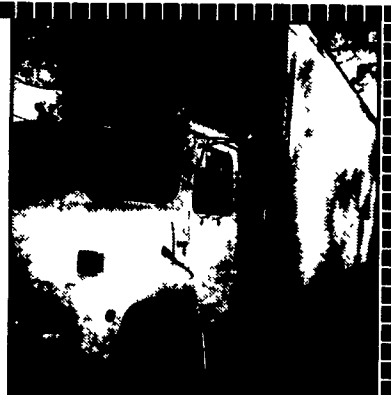
1982 INT 24 Ft Box TR

DT466, Auto, Tandem Rear. 87,000 Miles.

\$4,995 OBO.

Will Separate.

610-273-2423



FOR SALE



93 FORD 250 XLT

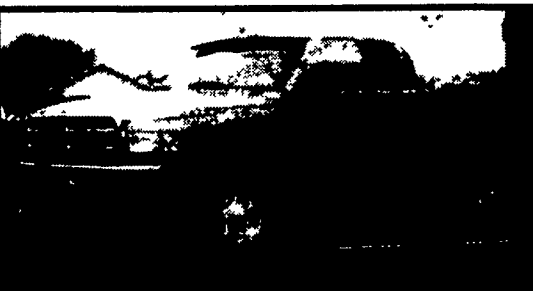
Diesel, Dual Tanks, Knapheide Deluxe Body \$6,995 OBO
88 Chevy Cargo Van \$995
89 Buick Park Avenue \$995

570-297-4128 Ext. 22

\$8,500

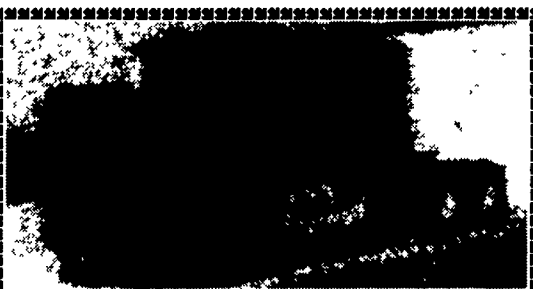


'87 Peterbilt 349 NTC 400 Cummins, 9 spd trans, 38,000 rears, 12,000 front, 4 new recaps, brakes 90% **717-734-3139**



2001 Dodge Ram 2500 4x4, Quad Cab, SLT, Cummins Diesel, 6 Spd., Air, PW, PDL, Tilt, Cruise, Tow Pack, One Owner. 138,000 Mi. \$20,500

Phone (717) 336-3190



'87 Freightliner 476,000 Miles, 9 Spd., 3406B Cat, New Lining, Good Condition **\$5,000 OBO (717) 927-9364**



1998 Dodge Quad Cab, Dually with Cummins, Centurion Package, 54,000 Orig. Miles, Loaded, w/Custom Hauling Bed, Excellent Condition, Has Gooseneck Hook-up. **\$20,900 O.B.O.**

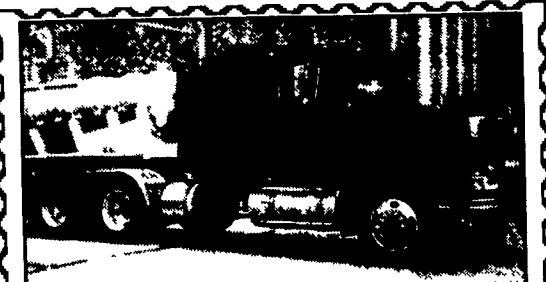
(484) 256-1201

'94 GMC Jimmy SLT, 4x4 Blazer, 4.3 V6, auto, PS, PB, PW, PDL, cruise, tilt, air, 90,000 miles, new radials, black & silver, \$5,975. 717-733-2873

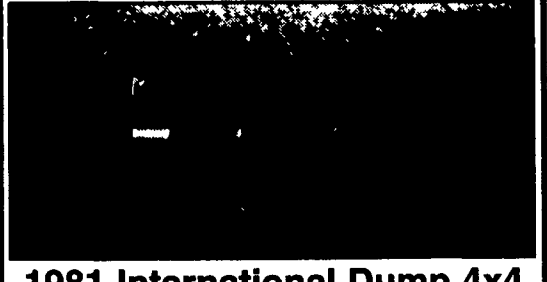
'95 GMC SLE 1500 4x4 Suburban, 350 auto, PS, PB, PW, PDL, cruise, tilt, air, AM/FM cassette, 97,000 one owner miles, new radials, burgundy, \$11,500. 717-733-2873

'97 Chevy Cheyenne 2500, extended cab, 2WD, 350 auto, PS, PB, cruise, tilt, air, AM-FM Cass., towing package, 8,600 GVW, 63,000 one owner miles, \$11,900. 717-733-2873

'94 Ford XLT F250, 4x4, super cab, 351, 5 spd, PS, PB, PW, PDL, cruise, tilt, air, AM/FM cass., 8800 GVW, 70,000 miles, dark green, \$11,500. 717-733-2873



1998 Int'l 9400 Eagle Tractor
Cat 3406E 475 HP 3.90 Rears. Fuller 185 speed D.O. 213" W.B. Wet line all aluminum wheels. New 11R24.5 tires. New brakes. Air ride suspension. Available Dec-Jan **800/872-0160 or 301/829-2900**



1981 International Dump 4x4
Low Miles 52,827, 5 Speed, 466 DT, 10' Snow Blade, Tailgate Cinder Spreader
GVW 23,300, No CDL
\$9800. 717/432-8403



'96 Peterbilt

6WD, 8-Spd. Trans., 10 Yd. Mixer
\$29,500 or \$26,500 without mixer
717/336-7375



1990 F-250 4x4 351W Auto.
Western P. Angle-V Plow. Runs Good.
\$4295 OBO 610-273-2423

ARMY 6x6 TRUCKS

2 1/2 Ton ★ 5 Ton ★ 10 Ton



M998 Hummers Available
Harvest ★ Spreaders
Feeders ★ Fuel/Water
100% Financing
Lease Plans
(Qualified Buyers)

Dependable and Field Proven

Complete Military Truck Parts Inventory

MEMPHIS EQUIPMENT

766 S. Third St.
Memphis, TN 38106
901-774-0600
Fax 901-946-1919

e-mail:
memphisequipment@compuserve.com

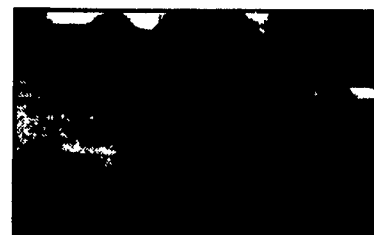
821 Lincoln Way West
Chambersburg, PA 17201
717-263-4194
Fax 717-263-4555

www.memphisequipment.com
THE NATION'S LARGEST ARMY TRUCK DEALER

\$ave Now On All Instock Eby Livestock Trailers at Hostetlers



Bumper Pull
Save \$500



Gooseneck
Save \$700

Save \$500 or \$700 with Factory Incentives and Hostetler Promotion off the already reduced prices on

EBY TRAILERS IN OUR INVENTORY.

Buy Now For Best Selection

Hostetler Truck Bodies & Trailers

Milroy Exit of Rt. 322 between Lewistown & State College

717-667-3921

