

## Public Auction

(Coming up soon in November)

Flat, black farmland, 3 miles NE of Charles City, IA.  
93.5 tillable acres, 96 total acres. For more info. call  
**641-228-4562**

## FOR SALE

Former Richfield Feed Mill bordering Rt. 35 at east end of Richfield, Pa.

- (1) two story block building w/3,600 sq. ft. on each floor and
- (1) block building w/2800 sq. ft. on approx 1-1/4 acre w/additional acreage available. Excellent location w/many possibilities

**Renninger Brothers** John 717-694-3140  
Stanley 717-694-3972  
Earl 570-539-2208

## Missouri Ozarks Mountain Splendor

Retreats & Ranches  
Back Home Real Estate  
Rt. 3, Box 251-D1  
Ava, Missouri 65608  
**1-800-938-8800**

## MONTGOMERY COUNTY



**Swanksville Area** - Colonial and dog kennel on 8.5 partially wooded acres, 4 BR, 2-1/2 baths, updated kitchen & baths New roof, Pella windows, new hardwood floors, 40+ run dog kennel with oil heat and a/c Two large grooming areas & office Remodeled 3 BR apartment over kennel office Zoned for kennel use - great business opportunity!  
**Asking price \$590,000**

Call Hiram Hershey, Broker  
Thomas Hershey, Realtor Associate  
**HERSHEY FARM AGENCY, INC.**  
**1-800-880-3831**

## WANTED

Auto salvage yard or land zoned for salvage.  
Southeastern PA, South Jersey or Northern Delaware.  
**267/228-6811**

## New Listing in Dauphin Co. PA

★ 106 acre general farm with 70-75 acres tillable, 15 acs pasture, 16 acs woodland, 47'x85' bank barn with 10 horse stalls, 24'x24' corn barn, 2 1/2 story farm dwelling. 6 BR's, 2 1/2 baths, sunroom, 2 fireplaces, patio.

~~\$595,000~~ **\$549,000 ask for Gene**

★ 54 Acre 37 tillable acres with brick house and bank barn, would make good horse farm. **Asking \$338,000**

**When You Need A Farm Salesman Call Gene**

**COLDWELL BANKER**

**HOMESALE SERVICES GROUP**



Gene Kreider, Realtor  
717-898-2345 or 717-653-2646

1255 S Market St.,  
Elizabethtown PA 17022  
717-361-HOME 717-665-HOME  
717-367-1112 (Fax)  
1-800-850-1069 (PA Only)  
717-367-3500 or 717-653-6600

## SALTHAWK REAL ESTATE, INC.

717-532-6059 SHIPPENSBURG, PA

**PRIVACY, LOCATION & over 3 Acres** add to this beautiful home that features huge family room w/massive stone fireplace, 3 or 4 bedrooms, 2 baths, gourmet kitchen w/appliances, formal dining area w/panoramic views of the valley, hot water heat and tons of custom features. PLUS a separate ranch-style home that contains 3 bedrooms & 2 baths for guests or in-laws, beautiful hilltop, secluded setting. Offered at \$275,000.

**LARGE COUNTRY FARMHOUSE** (partial log) features 4 roomy bedrooms, 2 baths, hot water heat, huge eat-in kitchen, family room & much more PLUS a 312'x44' poultry house w/transferrable income & room for expansion Barn & other outbuildings located on over 9 acres of land in scenic Cumberland Valley No current twp. zoning. Call for details. \$248,900.

**LURGAN TWP.** (Franklin Co.). Totally updated Farmhouse on 18 Acres (2 separate tracts) of privacy Home includes 4 bedrooms, hot water heat (oil, coal, wood), modern kitchen w/appliances and much more Plus barn, garage, and other outbuildings Property has been well maintained and is in nice condition. \$229,000

**FRANKLIN CO.** (North Mt Area) Approx 4 1/2 Acres of privacy. Great place to build your dream house or cabin in the woods Perced Asking \$47,500.

**CUMBERLAND CO.** Over 3 1/2 Acres of wooded Mountain Land. Borders state Great place for cabin or home. \$42,000



**DEMERE REALTY**  
171 N. Gardiner Rd.  
Little Falls, NY 13365  
Phone (315) 823-0288  
George Demeree, Broker



**#25 - A Nice sm. farm on dead-end rd.** - 179 A. w/90 tillable, 70 pasture & 10 woods - 50 cow barn w/2" pipeline, 1000 gal B.T. & wide fronts - 2 silos w/unloaders, 2 grain bins, lg. garage & 40 x 60 ft. mach shed - also V.G. 3 B.R. ranch home w/2 stall garage, in-ground pool & deck - **\$150,000.**

**#31-A - Dairy farm w/227 A.** has 135 tillable & 85 pasture - lg. 2 story barn w/71 cows on 2" pipeline - 1250 gal. B.T. - heifers & calves housed in main dairy barn - 2 lg. mach. sheds & 3 silos w/unloaders - good 7 B.R. 2 fam. home - well & 2 ponds - all bldgs. in good condition - **\$274,900 - REDUCED TO \$264,900.**

**#249 - Dairy farm w/160 acres** - 75 tillable - 2 story barn w/56 cows on pipeline - 32 heifer stalls - 40x96 ft. shed - 22x100x9 ft. bunk silo with concrete floor - good 8 rm. home w/attached garage - **\$198,000.**

**B-148 - Hobby or horse farm with 14 acres** - private with long driveway, but close to village - 15 yr. old 5 bedroom home has finished basement & 2 baths - 25 x 44 ft barn has 6 horse stalls plus storage - **\$79,900.**

**W-106 - Exquisite 300 A. hobby farm w/160 tillable** - magnificent views - A very well maintained property w/lg fields for crops or grazing - plenty of water - 32x80 ft. barn w/14 x 60 ft. & 25 x 35 ft attached housing - 3 bay garage - lg mach. shed - Good 9 rm plus home - lots of rd frontage - close to Binghamton - **\$334,000.**

**#348 - Attractive 250 A. dairy farm w/235 tillable** - 2 milking barns, 2" pipeline, B.T., TMR mixer, 2 Harvestores w/unloaders, 54 x 90' Morton bldg also V.G 8 rm home w/4 B.R. & 2 baths - 1 pond & 1 creek - **\$330,000**

**If You Have A Special Property You Need To Sell**  
**"Talk to Paul or Diana"**  
**(877) 327-0910 Direct Line**



2209149

FL4275015

2205656

- **ADAMS - Working Farm** - Large capacity egg laying facility located on 76.98 acres in Adams Co. with private setting yet easy access to Rt 15 276,000 Bird operation with parking facility equipped for 100 cases hour and back up generator system. Also includes 3 BR Brick Farmhouse in good condition Check out our website for more details. **\$1,750,000** (2209149)
- **FRANKLIN - Working Farm** - 195 acres w/beef barn and hog finishing buildings. 110 tillable, 63 pasture and creek frontage. Very nice home with first floor master suite Very private end of the road farm in excellent condition - well managed **\$925,000** (FL4275015PG)
- **YORK - Working Farm** - Beautiful location in Dover, PA 150.20 acres "Clean & Green" turnkey cattle operation ready for occupancy. 25x26, office plus 16x20, Pole barn with dirt/gravel floor and additional feed lot. **\$900,000** (2205656)
- **ADAMS** - Back the lane to complete horse facility on 40 ac. Center aisle barn w/tack rm, stall mats, wash stall & more! 2nd barn w/stalls, hay storage & paddocks Exercise track. New 62x130 "Cover All" indoor, round pen & hot walker. Custom built 42x60 equip bldg. Completely fenced, pond and views! Beautiful stone/frame rancher w/new in-law suite. Lots of amenities. Don't miss this one! **\$749,000** (AD 2207721)
- **ADAMS** - Early 1800's Stone house w/13 acres Combine the charm of an early America Stone house with a country setting. Bank Barn and other utility buildings overlook the acreage with a pond **\$350,000** (2209176)
- **ADAMS** - Pristine 86 acre farm w/ Showplace home. 50 tillable acres, 5 ac pasture & 15 ac wooded w/bridge trail Restored 2 story farmhouse w/ fieldstone fireplace. Barn & outbuildings are in MINT CONDITION. **\$435,000** (AD 4253661) **UNDER CONTRACT**
- **ADAMS** - Farmette w/15+ acres, 4 BR, 3.5 BA, home features small office off living room w/private entrance Several outbuildings include workshop and storage Property in the "Clean & Green" Home Warranty! **Priced Reduced \$259,900** (AD 4143863PG)
- **FRANKLIN** - Farmette lots with creek frontage, wooded areas & open fields Starting at 15-43 Acs. **\$145,000** (FL4275015)

**Schedule a market consultation with Paul and Diana**

- **FULTON** - Farmette sized lots close to the MD line, Clean & Green. From **\$69,900-\$195,000** (FU3532136)
- **FULTON** - Custom built log home situated on 33+ acres 2 BR, 2 full BA, tongue & groove pine floors, loft, creek frontage, 2 decks, hot tub, skylights Located in the "Clean and Green". Very private! **\$315,000** (FU4210945PG)
- **YORK** - Executive home situated on 35+ acres Property includes lrg. barn w/outbuildings, breakfast rm w/bay window, 2nd flr. living area w/kitchenette, wood flrs MBR suite w/full Ba, creek frontage, add'l 35 acres available **\$495,000** (YK4018936PG)
- **YORK** - 45 ac. very private country home wknd getaway Zoned AG in "clean & green". Rehab project. No bathrooms, no central plumbing, heat or septic Beautiful deep window sills, structurally sound fieldstone in excellent condition. Random width pine floors ready for refinishing Misc outbuildings, good bank barn. **\$239,900** (2207367) **UNDER CONTRACT**
- **YORK** - 37+ ac. farm, 3 ac. fenced, 22 ac. till, 10 ac. wooded. Original farm house from 1900 w/new addition Beautiful mst. suite w/fireplace, walk-in closet, lg. soaking tub and many other amenities In-ground pool, private lane, implement shed, "clean & green". **\$294,900** (2204435)
- **YORK** - Neat as a pin farmette on 26+ acres! Private lane to 3 bdrm colonial cottage. Eat-in kitchen w/tile floor, woodstove in LR. Excellent condition. Bank barn. 3-car garage, pond & views Don't miss this one! **\$230,000** (2208260) **UNDER CONTRACT**

**We need dairy and horse farms of all sizes**

**Paul Gunder**  
**Jack Gaughen Realtor ERA**  
**717-762-7114 x9116**

To view additional photos of properties please visit  
**www.penmarproperty.com**

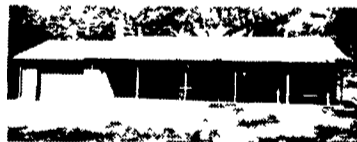
Member of PA Farm Bureau



## GOD'S COUNTRY REAL ESTATE, INC.

116 NORTH MAIN ST.  
COUDERSPORT, PA 16915  
(814) 274-7640

FAX (814) 274-7642



**Excellent buy for the year round sportsperson** — attractive three bedroom lodge with attached garage Horse barn and two sheds. Fine country setting on 10 acres, close to state forest lands in the Denton Hill area. Snowmobile from door onto approved trails.

Property is in excellent condition. **\$135,900.** #845



#850

**Home price reduced** — Older two story three bedroom home in Coudersport Boro 2 baths, gas heat, detached one car garage Was \$82,900

**Now \$67,900**

**Just far enough - but not too far from town** — 8+ acres in Ulysses Township bordering Emmel Road. New survey, has sand mount septic approval, electric available. **\$25,000.** #853

**Leave your problems at home** — and head to this getaway in the beautiful mountains of Potter County, PA 2 bedroom mobile home on 13 + acres in Ulysses Township, all wooded setting with hardroad frontage Plenty of seclusion. **\$48,500.** #852

**Great Investment** — One story home with attached carport and workshop on a country lot in Sharon Township, would make an ideal camp property. Was \$19,900 **Now \$16,900.** #848