

35 TRUCKS AND TRAILERS

7511 Allentown Blvd.
Harrisburg, PA 17112

**75 TRUCKS
IN STOCK**

**AFFORDABLE
CARS AND TRUCKS, INC.**

"You Gotta Believe!!"

717-652-1925
FAX 717-652-4888
www.autotrader.com/view/
affordable car and truck

New Exit #72A, Rt. 81 N; Rt. 22 East of Harrisburg; 3 Miles North of Hershey Park

95 FORD F250 XLT 4x4

7.3 Powerstroke DSL, 5 Spd, AC, PW, PDL, Cruise, Tilt, 2 Tone Black/Gray, Only 120K, Very Clean Truck, Just All Gone Over by Our Shop!
\$10,995



94 FORD F250 XLT

4x4 Ext Cab Long Bed, 7.3 International Turbo Dsl, AT, PS, PB, AC, Tilt, Cruise, Tow Setup & More, 99,000 Mi, Very Well Cared for Truck!
\$13,995



98 FORD F350 SUPREME
18' Box Truck, 11,500 GVW's, Rollup Door, Plank, New Tires, Brakes, & Insp, AT, AC, Stereo, 5.4 Triton, 100,000 Mi, Superb, Sharp. We used truck all year!
\$8,999



95 DODGE RAM 1500 4X4
Laramie SLT, V8, AT, AC, PW, PDL, Tilt, Cruise, Alloys, Stereo, 2 Tone Paint, Good Clean Truck, 1-Owner, 160K
\$5,995



00 FORD F350 LARIAT
4x4, Quad Longbed, 1-Ton Dually 7.3 Powerstroke, AT, AC, PW, PDL, Stereo, Alloys, Mint Condition, 105K, Must See!
\$22,995



96 DODGE RAM 2500
4x4 Laramie SLT, Cummins Turbo Dsl, AT, AC, PW, PDL, Stereo, Tilt, Cruise, 2 Tone Black/Red, Only 130,000 Mi, Extra Clean 1-Owner Trade In!
\$15,995



92 DODGE RAM 2500 LE
4x4 Extended Cab Long Bed Cummins Turbo Dsl, 5-Speed, AC, PW, PDL, Stereo, Tilt, Cruise, Only 120K, Totally Flawless In Every Way, Ready to Work! Market Value Prohibits Financing On This Truck
\$13,500 Cash



99 FORD F350 SUPER DUTY XL 4X4
7.3 Powerstroke, 6 Speed, AC, Stereo, Only 80,000 Miles, Very Clean 1-Owner, Superb Shape, Where You Gonna Find These??
\$17,995



98 DODGE RAM 1500 4x4
Laramie SLT Ext Longbed V8 360, AT, AC, PW, PDL, Stereo, Only 60,000 Miles with New Insp & Radials Very Sharp, All Dk Green
\$13,995



95 DODGE RAM 2500 4x4
Cummins Turbo Dsl., AT, AC, Only 114,000 Mi., New MoPar Trans. with 12 Month Trans. Fact Warr. to New Buyer Included. Trans. Has No Miles on it! Very Clean Truck.
\$10,995



92 FORD F250 XLT 4x4
Ext. Longbed, 7.3 International Dsl., AT, AC, PW, PDL, Tilt, Stereo, Alloys. I Would Call This One Mint Condition - Must See! 100,000 Mi
\$10,500



96 DODGE RAM 2500 4X4 LARAMIE SLT
Ext Longbed, 360 V8, AT, AC, PW, PDL, Stereo, Cruise, Tilt, 120,000 Mi., Good Clean 1-Owner Truck, Must See!
\$10,995



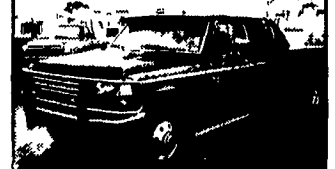
97 DODGE RAM 3500 4X4
Laramie SLT, Dually Ext Longbed, 1-Ton Cummins Dsl, 5-Spd, AC, PW, PDL, Stereo, Cruise, Tilt & More, 140,000 Mi, Extra Clean With New Tires! Must See!
\$17,995



89 GMC 2500 4x4 PLOW TRUCK
AT, New 350 Motor, Myers Plow With Full Angle. This Is Our Truck Owned For 5 Years, Very Basic, No Air, But Snow Is Coming, 100,000 Miles
\$5,495



88 CHEV. 1500 Silverado
4x4 Ext Long Bed, All Options, V8 350, AT, AC, PW, PDL, Real Clean Body & Interior, 100,000 Mi & Real Well Cared For!
\$6,495



97 FORD F350 CENTURAN
Dually Crew Cab Diesel, 7.3 Powerstroke Dsl., AT, AC, PW, PDL, Cruise & More. Extra Clean & Very Well Cared For. 100,000 Mi
\$14,000



92 FORD F350 XLT 4x4,
1-Ton Crew Cab Longbed, 7.3 International DSL, 5 Spd, PW, PDL, Tilt, Cruise, AC, & More. All Black, New Clutch & Transfer Case, Runs & Looks Like New, Well Cared For, 200,000 Mi, **\$12,500**



96 FORD F350 XL 4x4
7.3 Powerstroke Dsl, AT, PS, PB, Cloth Seat, Only 60,000 Actual Miles, Superb Condition, No Air **\$14,995** With Air **\$15,995**



00 FORD F350 LARIAT 4x4
Super Duty Crew Cab Longbed, 7.3 Powerstroke DSL, AT, AC, PW, PDL, Leather, Cruise, Tilt, Absolutely Perfect In Every Way, 99,000 Mi
\$24,995



96 CHEV. SUBURBAN SLT
4x4, 6.5 Turbo Dsl, AT, Dual AC, 3rd Seat, Interior Full Leather, Exterior All Black, 120K, Looks & Drives Like New!
\$14,995



97 DODGE RAM 2500 4x4 LARAMIE SLT Ext Longbed, Cummins Turbo, AT, AC, PW, PDL, Tilt, Cruise, Stereo, CD/Cassette, Only 80,000 Mi, Navy Blue & Immaculate, Nicest One I Ever Sold Here At Affordable
\$18,995



96 JEEP GRAND CHEROKEE 4x4
Limited Black/Black Leather 6 Cyl, AT, AC, PW, PDL Stereo, New Radials Beautiful Shape, 80,000 Mi
\$8,495



95 FORD F250 XLT 4x4
Ext Longbed, Powerstroke, DSL, 5 Spd, AC, PW, PDL, Tilt, Cruise & More, New Clutch & Flywheel, Like New, Black Body, Must See & Drive, 100,000 Mi, **\$13,995**

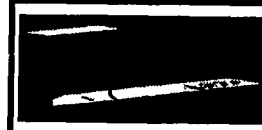
'96 Chevy Cheyenne 2500, 4x4, Suburban, 350 auto, PS, PB, cruise, tilt, air, AM/FM cass., 4.10 ratio, towing pkg., 81,000 one owner miles, new radials, \$13,500. 717-733-2873

'96 Chevy Cheyenne 2500, HD, 3/4 ton, 4x4, 350 auto, PS, PB, cruise, tilt, air, AM/FM cass., 4.10 ratio, limited slip diff., towing pkg., 62,000 miles, new radials, dark green, \$12,900. 717-733-2873

'99 GMC SL 3500, 4dr crew cab, 350 auto, PS, PB, cruise, tilt, air, AM/FM, 9,000 GVW, 95,000 one owner miles, new radials, \$13,500. 717-733-2873

'99 GMC SL 2500, HD, 3/4 ton, 4x4, 6.0 auto, PS, PB, cruise, tilt, air, AM/FM Cass., 8600 GVW, 373 ratio, limited slip diff., 45,000 one owner miles, new radials, dark blue, \$16,900. 717-733-2873

'99 Chevy Cheyenne 1500, 4x4 Suburban, 9 pass., 350 auto, PS, PB, PL, cruise, tilt, air, 59,000 one owner miles, green, excellent condition, \$14,900. 717-733-2873



28 ft. flat truck bed with side pockets, could be cut to fit your needs. Off of tri-axle.
\$1,200
717-483-6408

USED TRUCKS



2001 CHEV. 3500 SILVERADO 12' DUMP 4X4, Duramax Turbo Diesel, Allison AT, A/C, PS, PB, 23K, White, 12,000 GVW **\$30,500**

2002 CHEVY 2500 HD SILVERADO, Quad Cab, 6.0 V-8, AT, 4x4, A/C, PS, PB, 8 ft Bed, 11,000 Miles, Met Green **\$25,900**

1997 DODGE RAM 3500 4x4, 9' Flat Bed, Cummins Turbo Diesel, AT, A/C, PS, PB, 88K Miles, White, 11,000 GVW **\$17,900**

2001 DODGE DAKOTA QUAD CAB SLT, V6, AT, A/C, Most Options, 83K Miles, Maroon **\$13,500**

2000 DODGE RAM 2500 QUAD CAB 4x4 SLT LARAMIE, 5.9L Magnum V8, AT, A/C, Most Options, 109K Miles, Met Green **\$14,900**

1999 FORD F250 XLT QUAD CAB, 4x4, Power Stroke Diesel, 6-Spd, A/C, Most Options, 112K Miles, Met Green **\$19,900**

1997 DODGE RAM 3500 SLT, Club Cab Dually, 4x4, Cummins Diesel, AT, A/C, Most Options, Green, 202K **\$16,500 \$14,900**

1997 CHEV 2500 SILVERADO, 4x4, Ext Cab, 350 V8, AT, A/C, Most Options, 8 ft Bed, 97K Miles, Lt Blue **\$14,800**

1997 DODGE RAM 2500 CLUB CAB 4X4 SLT LARAMIE, Cummins Turbo Diesel, 5-Spd, A/C, Most Options, 8 Ft Bed, 94K Miles, Met Green & Silver **\$19,900**

2001 OLMOBILE SILOHETTE, 6cyl, AT, A/C, most options, 24K Miles, Black **\$16,900**

SCHAEFFERTOWN AUTO & TRUCK SALES
RT. 501, 1-1/2 miles South of Schaefferstown
717-949-2812

Woodcrest Motors

SPECIALIZING IN TRUCKS & VANS

1200 North Reading Rd., (Rt. 272) Stevens, (Lancaster Co.) PA 17578

717-336-3130



99 CHEV. SILVERADO 1500 Ext. Cab, 3-Dr, LT, 4x4, 5.3 V8, AT, A/C, Most Options, 98,000 Miles, Light Gold
\$16,800



99 DODGE DAKOTA SPORT 4x4, Club Cab, V8, AT, A/C, 59,000 Miles, White
\$12,995



00 TOYOTA TUNDRA SR5, 4x4, V8, AT, A/C, 55,000 Miles, Maroon
\$14,995



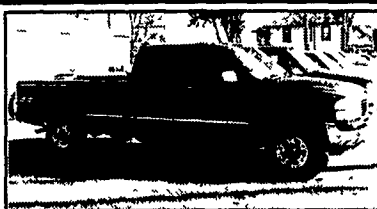
97 FORD F150 XL, V6, AT, A/C, 8 Ft Bed, 2-Tone Paint, 71,000 Miles
\$8,500



99 CHEV. SILVERADO 2500 LS, Ext Cab - 3 Door, 4x4, 6.0 V-8, AT, A/C, Most Options 8,600 GVW, 60,000 Miles, Red
\$19,995



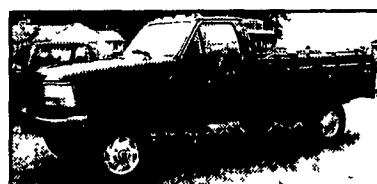
99 FORD RANGER Super Cab 4x4 XLT, AT, A/C, 32,000 Miles, Dk Green
\$12,995



99 GMC 2500 SLE
Extended Cab 4x4, 6.0 Vortek, AT, A/C, PW, PDL, Cruise, Tilt, CD, 8,600 GVW, 4.10 Ltd Slip Rear, 57,000 Mi Black
\$20,900



92 Chevy K3500 Scottsdale 4x4
350 FI, AT, A/C, 3.73 Rear, 9,200 GVW, 113,000 Mi., Blue
\$7,900



97 Ford F350 XL 4x4
7.3 Power Stroke Diesel, 5 Sp. A/C, AM/FM Cas, Diesel Tanks, New Tires 9000 GVW, 4.10 Ltd Slip Rear, 6.900 Mi, Dr Green
\$18,400



96 Chevy K2500 Silverado Extended Cab
4x4, 6.5 Turbo Diesel, AT, A/C, PW, PL, Cruise, Tilt, Cas/CD, PMirrors, 8,600 GVW, 3.73 Rear, New Tires, 83,000 Mi., Dark Blue
\$14,500

MARTIN'S AUTO SALES

1025 W. Main St., New Holland, PA 17557

(717) 656-6621