

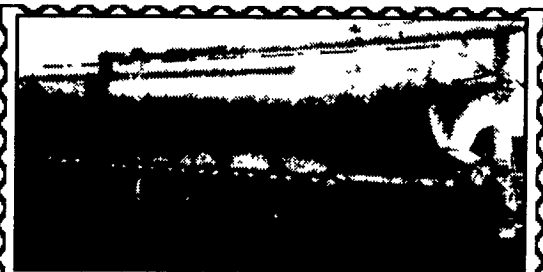
32 MISCELLANEOUS

Custom Hauling w/25ft gooseneck. No Sunday calls. Lancaster Co. 717-653-1315

9x24 South Bend metal lathe, QC w/cabinet base, \$975. 24x24 Branford vibrating table, \$275. Chandler & Price paper shear, \$725. 845-583-4500

CNC series II Bridgeport milling machine, centroid controller, large amount Ericson Qwik Change collets, lots of tooling, \$5000. 610/856-7625 Berks Co.

Spa/Hot-tub, luxury model w/options. Never opened, still in wrapper. Full Warr. Refills to \$9,300 sacrifice, \$3,750. 717-397-8449.



91 Clab Feed Trailer 8 bins air ride inside and outside door controls 11' high 35' long 11.22x5 tires. Good Condition. **\$15,000**
Call Kent County, De (302)-284-8774



New Open Car Trailer \$1,499
7,000 lbs. GVW, elect. brakes, with ramps that slide out from under diamond plate steel runways
4x8 Utility Trailer \$399 • Car Dolly \$699
302/368-9534
Newark, Delaware

32A ANTIQUES

Ferguson 30 tractor, \$2500 call 717-729-5325

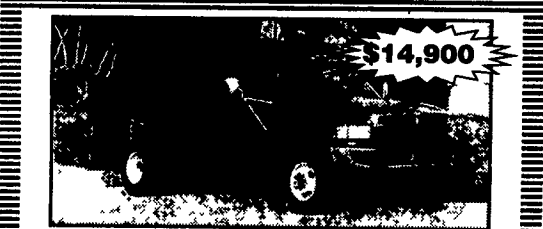
1939 Cletrac HG Mdl. 72" wide, complete restoration \$4,000; 1947 Cletrac HG Mdl. 72" complete restoration \$4,000; '56 Case 310 Dozer complete restoration \$10,000 invested make reasonable offer. 570-759-0014.

FOR SALE:

85 EAGER BEAVER TRAILER

8x16 Deck w/4.5' beavertail & ramps. Frame sandblasted & painted, new tires, new elec. brakes, new 2" deck.

\$6,500 neg. 610-383-7042



95 DODGE 3500 4x4 - Mason Dump, V8 Magnum 5.9L, 5 Speed, 48,000 Miles, Towing Package, Almost Like New.
Myerstown 717-866-1610, 610-269-3442

33 RECREATIONAL VEHICLES

2000 Weekend Warrior travel trailer, Sleeps, 6-8, many extras. See photos @ www.kmbassoc.com/rv/www.htm. Asking \$17,000 obo. 908-581-7535

1999 Honda 4-wheeler Foreman 4x4, excellent condition, \$4695 OBO. 717-733-8921

'92 Wrangler Jeep, 4.0L, 150K, soft top, teal paint good, \$4,200 OBO. 717-336-8218.



96 Mac Dump Trailer 40'x102"x72" Frameless Alum., Spread axles on Air, All Alum. Wheels, 11x24.5 tires, Many Extras
Asking \$24,900/OBO
Ph 888-828-3429

34 AUTOS

1987 Dodge wagon, 8 pass, 2500 van, 66,000 ml, SLT pkg trailer pkg, 2 tone paint, rear heat & AC, 5.9L eng. \$10,500. 717-935-5387

'99 Olds Alero GLS, 2 dr., 3400 V6, auto, PS, PB, PW, PDL, cruise, tilt, air, AM-FM Cass/CD, 46,000 miles, black, \$8,975. 717-733-2873

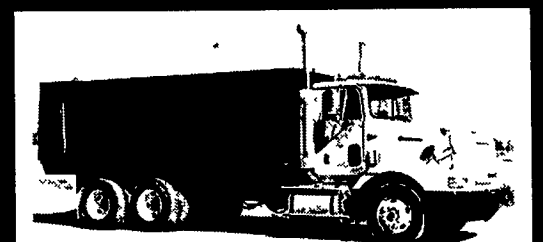
'99 Chevy Malibu LS, 4 dr, V6, auto, PS, PB, PW, PDL, cruise, tilt, air, 38,000 one owner miles, new radials, black, \$8,975. 717-733-2873

91 Subrua station, 4WD, gd. cond. 116,500 ml. \$2,000. 717-626-8526.

2001 Dodge 15 passenger van, 3500 maxi wagon, loaded, ex cond, 31k ml, extras, trailer hitch, remove external cargo carrier, extended 100k mi warranty, \$18,900. Refr. from Amish driving. 484-459-1089, 610-857-2421



1995 L8000 20 ft. Flat-Bed Dump. Also Scissor's up 18 ft. 8.3 Cummins, 7 spd., 138,000 miles. 166 inch C.A. Will separate.
610-273-2423



1995 Int. 9200 Silage Truck Cummins M-11 370 9 Speed, 579,813 Miles, 20' Scott Silage Body and Hoist - New in 2002, Excellent Condition. **\$26,900**
Also 1991 Freightliner with 18' Aluminum Dump Bed - High Sides - Good for Silage or Grain. **\$16,900**
No Sunday Calls (717) 597-5623



\$6,800
MACK DM685 Dump Truck (1979) 237 Maxi Dyne Engine, 6 Speed - Low Hole Trans., 55,000 lb. Rear, Underbody Hoist Dump
Gerhart Machinery Company
717-626-8544



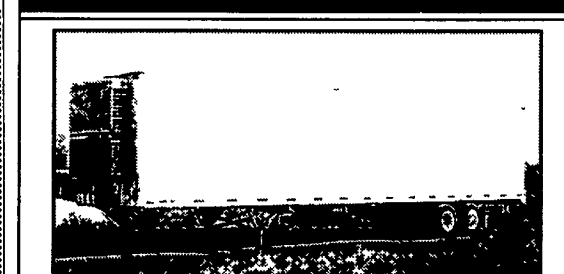
\$12,500
1982 Paystar 5000 Roll-Off, New Rebuilt Cummins Engine, New Air Compressor, New Injector Pump, Rebrushed Rears (70,000 lbs.), 75,000 lb. American Winch Hoist. Runs & Drives 100%.
Eve. 609/561-6510 S. Jersey



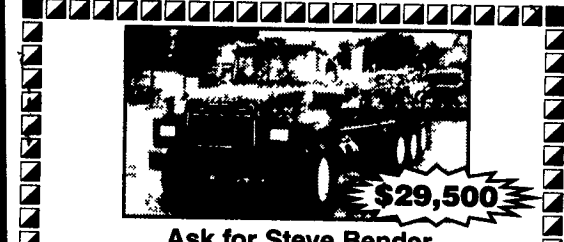
1990 F-250 4x4 351W Auto. Western P. Angle-V Plow. Runs Good.
\$4295 OBO 610-273-2423



1995 K.W. W900L Sharp Truck **\$28,000 OBO**
Also **2002 Trinity Belt Trailer \$50,000 OBO**
No Sunday Calls
717-694-3917
717-648-2935



1990 Utility 48' x 102" Reefer Trailer Thermo King SBMII Unit, 6875 Hrs., Good Aluminum Floor, Hinged Rear Doors. **\$6,500**
Also **1980 Fruehauf 42' Trailer with Thermo King Reefer, Wood Floor, Roll-up Door. \$2,500**
No Sunday Calls (717) 597-5623

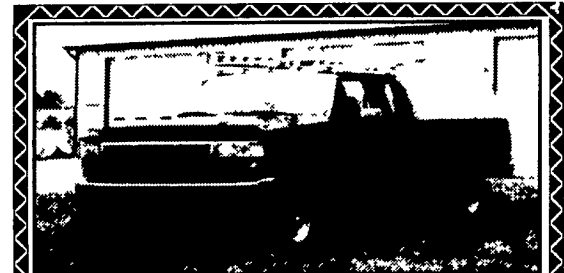


\$29,500
Ask for Steve Bender
1993 Mack Model RD 6885 Engine E7400 Trans. Fuller 10 Speed Jake Brake/Air Ride Cab/Lift Axle
W.B. 236 C.A. 156 Miles 236,644, No AC

RIFE MOTOR CO., INC.
768 N. Franklin St., Chambersburg, PA 17201
Ask For Steve Bender
Phone: (717) 263-8518 • Fax: (717) 263-4293



1974 R Model Mack 300 Engine, Wet Line
\$3,200
717/484-2233



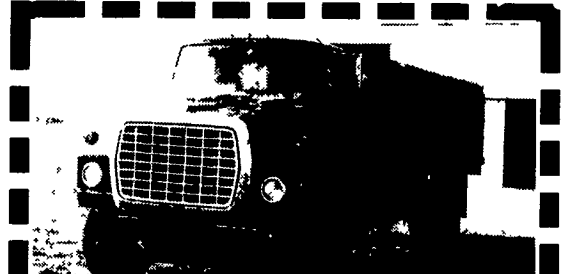
96 Ford 250 4x4 Powerstroke Diesel, XLT, ext. cab, dk. green, AT, AC, PW, PL, bucket seats, alum. ladder rack, 7.5 Western snow plow, power angle, nice condition, 160,000 mi. **\$14,900**
Call (717) 629-7365. Quarryville, PA



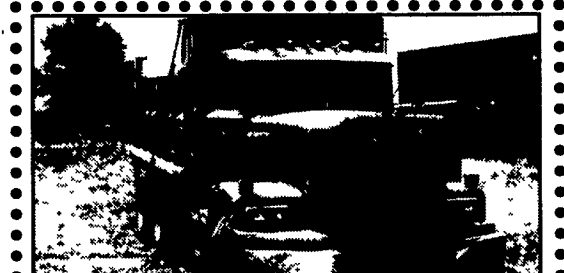
'96 Peterbilt 6WD, 8-Spd. Trans., 10 Yd. Mixer
\$29,500 or \$26,500 without mixer
717/336-7375



FOR SALE
1990 Dodge Dually Diesel w/Service Body
\$6,900 OBO
Call 717-933-4114



F-800 Single Axle, Power Steering, 18' Grain Bed, Twin Cylinder Dump.
\$3,800 OBO.
(419) 925-5536



'84 Diamond Reo, 10 Wheeler Dump 18,000 Front Axle, 350 Engine, 3 Stage Jake Brake, 14' Steel Body, 2-way Tail Gate, w/Hitch & Plum for Air Brake, Trailer, Tarp **\$12,000 OBO**
610-287-7894