

**FARM EQUIPMENT**

JD 850 compact tractor, 4WD, PS, new paint, 2800 hrs, \$5900. 717-859-3501

97 Skat track 1300C skid loader, good tires, Kubota dsl, 1900 hrs, \$5900. 717-859-3501

Kinze 2500, 6R planter, narrow transport. "Lift & Turn", no fill, interplants for 15" rows, lq fert & insecticide hopper, real nice. 717-569-8925

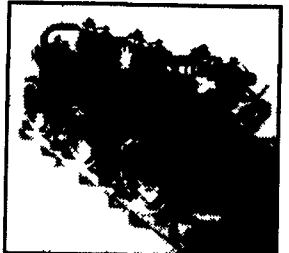
IH 5240 Maxum MFD, roll bar, 18.4x38 rear. 717-687-0792.

2 Badger wagons w/roof & tandem; JD 450 grain drill, 26 hole. 717/792-3216

Super A Farmall, w/ snowblade, cultiv. & plow, \$3,500. Lanc. Co. 717-336-1282

NH 277 baler \$3250; NH 451 mower \$1875. Both pieces excellent. 610-916-3959

**SPECIAL PURCHASE**



New Cummins B 3.3 turbo, 85 Hp, yr. 2002 with warranty  
3 per skid each \$2,500  
single price each \$2,650  
several new JD 150 HP, x 185 HP, Power tech. at surplus pricing

- 500 KW with like new eng. xrad PO R
- Kohler 100 KW JD. Power, enclosed, nice \$7,200
- 100 KW, only 311 Hrs, Hino Diesel \$4,800
- 150 KW, Detroit 671, turbo, \$5,800
- 44 KW Detroit 371, single PH \$4,000
- 30 KW 371 Power \$2,800

**(717)445-9907**

**Equipment For Rent**

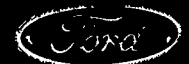
- Sunflower 4212 Coulter Chisel
  - NH 680 Spreader Set Up Poultry Litter
- Spreaders**
- NI 364, tailgate, 2 btr, VG
  - Gehl 1322 Scavanger, like new, tandem, 2000 model
  - 2800 Gal. VG Floation, tires, \$1,800
  - NI 3632 Spreader, Tailgate, 2 Btrs, VG
  - NH 680, exc., poultry litter spreader
  - NH 185, tailgate, 1btr, VG
  - Calumet 32 50 Gal., exc., like new
- Other Very Good Equipment**
- JD 8300 Drill w/GSA 21x7 Ex
  - Perfecta II w/tines, Rolling basket, Newpoints, 15' EX
  - EZ Flow Gravity Wagon, w/ext., 8 Ton
  - NH 28 Blowers, VG
  - Badger 14 Ton Running Gears - Ex, Low Usage, almost new
  - IH 60 Shredder 1000 RPM, All New Flails
  - Hardi 500 Gal. Single Axle, Loaded, 45' VG, Manual Fold
  - H&S 16 Wheel Hyd. Fold Rake, VG, 27'-30'
  - JD 3 Bu. Seed Boxes, VG Cond w/Lids, Fits 7000 & Kinze
  - JD 7200 4RN Dry, unit mtd, rebuilt, loaded, compare w/new
  - JD 7000 4RN Liquid, frame mtd, loaded

**Duffield Agri-Service**  
11199 Welsh Run Rd., Greencastle, PA 17225  
**717-328-2336**

**TRACTOR REPAIRS**

- We Have Experienced Ford Tractor Mechanics That Specialize In Ford Tractor Repairs -
- We Specialize In Any Size Ford Tractors And Have Since 1921
- We Specialize in Select-O-Speed Ford Transmissions
- Call For Quotes

**1-800-309-FORD (3673)**



**KELLER BROS.**  
RD 7 Box 405  
**LEBANON, PA**

**NOW IS THE TIME TO SEE BINKLEY & HURST BROS. FOR HIGH QUALITY RHINO MACHINERY**

**UNIVERSAL QUICK ATTACH SKID LOADER MOWER SM60**



The SM60 skid steer mower from Servis-Rhino® and your skid steer loader can tackle a range of industrial, commercial, and agricultural mowing jobs.

Cutting Width: 60"

The skid steer loader must be equipped with an operator front protective door. Contact your skid steer manufacturer or an authorized dealer for equipping your loader with a protective door.

**QUALITY 3 PT. POST HOLE DIGGERS w/AUGERS**

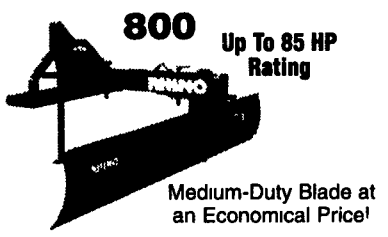


Double Flighting and Slip Clutch  
12" Augers

**1540 A Heavy-Duty Blade for Heavy-Duty Work!**



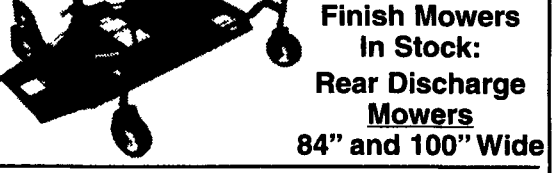
10 Foot up to 190 HP



800 Up To 85 HP Rating

Medium-Duty Blade at an Economical Price!

**3 PT. FINISH MOWER**



Finish Mowers In Stock:  
Rear Discharge Mowers  
84" and 100" Wide

**TW120**

The TW120 cuts a 120" swath of material. The center gearbox, rated at 120 HP, transfers power to the 100 HP outboard gearboxes. Torque dampeners on both sides of the center gearbox help prevent driveline and gearbox damage caused from sudden shockloads. Massive 2-3/8" diameter output shafts in the outboard gearboxes help provide optimum service. The pull-type and semi-mount units require a 50 HP (min) tractor and the lift-type unit requires a 60 HP (min) tractor (with adequate front weights).

TW120 - 10' Cut • TW84 - 7' Cut • TW72 - 6' Cut



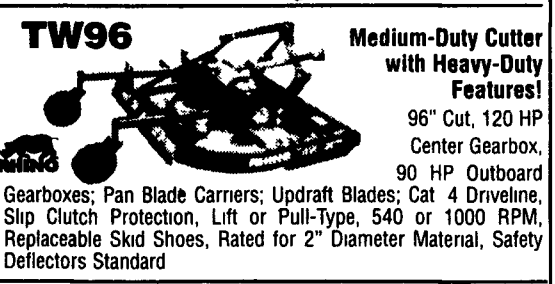
**SE15 Rhino Batwing Cutter With 160 HP Gear Boxes**

**Heavy-Duty Features!**  
15' Cut, 540 or 1000 RPM, Cat 5 Main Driveline, Cat 4 or 5 Wing Drivelines, Pan Blade Carriers, 6" Blade Overlap, Mechanical Level-Lift Axle, 10-Gauge Deck, 1/4"x10-1/2" Side Skirts, Full Swivel Clevis Hitch, Replaceable Skid Shoes, Wing Operation 90° Up and 22° Down, Rated for 2" Diameter Material Fully-Shielded Drivelines; Safety Deflectors Standard 15 Foot and 20 Foot Models In Stock Also FL15 Model to Cut 4" Diameter Material

**SE's Tough and Economical Family of Cutters!**

5', 6' and 7' Models, 540 RPM, Shear Bolt or Slip Clutch Protection, Pan Blade Carriers, Updraft Blades, CAT I Three-Point Hitch, CAT II Three-Point Hitch (SE7), Rated for 1" Diameter Material, Safety Deflectors Standard  
5, 6, 7 and 8 Foot

**SEE US FOR YOUR NEXT 3 PT. TILLER Setting Standards For Performance and Durability!**



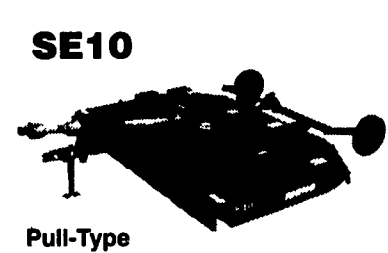
**TW96 Medium-Duty Cutter with Heavy-Duty Features!**  
96" Cut, 120 HP Center Gearbox, 90 HP Outboard Gearboxes; Pan Blade Carriers; Updraft Blades; Cat 4 Driveline, Slip Clutch Protection, Lift or Pull-Type, 540 or 1000 RPM, Replaceable Skid Shoes, Rated for 2" Diameter Material, Safety Deflectors Standard



**SE8 In Stock**

The Rhino® SE8 is an economical rotary mower designed to help maintain larger acreages of grass, weeds, stalks, or material up to 1" in diameter.

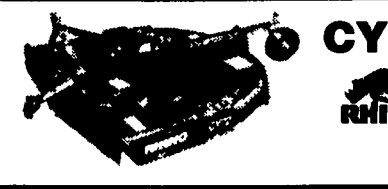
The streamlined, close-coupled design allows economical operation on tractors as small as 30 horsepower on the SE8. The 85 HP center gearbox and 60 HP outboard gearboxes are protected from sudden shockloads by a slip clutch on the main driveline and torque dampeners on the side drivshafts. Pan blade carriers help the unit glide over field obstacles and updraft blades with a 4" blade overlap provide a clean cut.



**SE10**

Pull-Type

The pull-type SE10 requires only a 45 HP (min.) tractor for economical, wide-cut mowing. A hydraulic cylinder or ratchet lift screw is available for raising and lowering the mower. A spring shock absorber is optional to help cushion shockloads to the mainframe when operating in rough terrain. (Unit shown with optional chain guards. Deflectors are standard.)



**CY72**

**Extra Tough Cutter for Extra Tough Cutting Jobs!**  
72" Cut, 540 or 1000 RPM; CAT II Heavy-Duty Three-Point Hitch; 140 HP "Rhino-Built" Gearbox (1000 RPM), Cat 4 Shielded Driveline, Slip Clutch Protection, Heavy-Duty Pan Blade Carrier, 3/16" Deck, 1/4"x9" Side Skirts, 1/2"x4" Updraft or Flat Blades, Rated for 4" Diameter Material, Safety Deflectors Standard

6 Foot Cut

Just arrived in time for wintertime fence line trimming with 21' reach! **THEY REALLY WORK!** Purchase a tractor & mower and reclaim your wide fence rows today! Ask about financing.



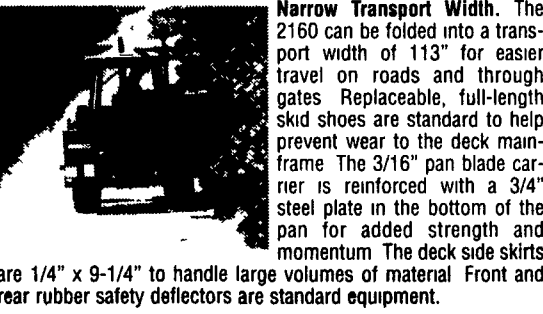
**Servis® Boom Mowers... Providing the Best in Quality and Versatility**

Servis® 1948 Hydraulic Boom Flail Cutters are designed for mowing grass and cutting brush in hard-to-reach areas including roadsides, ditchbanks, ponds, and fence rows. Large model with up to 18'8" horizontal reach and up to 4" diameter brush cutting.



**The Servis® 2160 Hydraulic Boom Rotary Cutter from Servis-Rhino® is designed for agricultural applications including cutting grass, weeds, and material up to 2" in diameter on an intermittent basis.**

With a maximum vertical reach of 22'6" and 190 degrees of head movement, the 2160 is ideal for trimming back brush up to 2" in diameter along fence rows or edges of open fields and other hard-to-reach areas. The design of the boom arm allows the 2160 to mow on the opposite side of low profile fences for easier fence row cleanup.



**Narrow Transport Width.** The 2160 can be folded into a transport width of 113" for easier travel on roads and through gates. Replaceable, full-length skid shoes are standard to help prevent wear to the deck mainframe. The 3/16" pan blade carrier is reinforced with a 3/4" steel plate in the bottom of the pan for added strength and momentum. The deck side skirts are 1/4" x 9-1/4" to handle large volumes of material. Front and rear rubber safety deflectors are standard equipment.

**BINKLEY & HURST BROS. INC.**

133 Rothsville Station Rd. (717) 626-4705  
P.O. Box 0395 1-800-414-4705  
Lititz, PA 17543-0395 Fax 717-626-0996

