

PPS Is John Bean Dealer



LITITZ (Lancaster Co.) — John Bean Sprayers has announced Progressive Pressure Systems (PPS) of Lititz as a new dealer for the distribution of the John Bean agricultural lawn, landscape, and tree care sprayers and accessories (pumps, hose reels, spray guns, sprayer, etc.).

Progressive Pressure Systems endeavors to stock the necessary parts required to keep equipment serviced during the busy season. Their knowledgeable service technicians can take care of your service needs in the field or in their shop located at 1248 East Newport Road, Lititz.

'Attention Alfalfa' Available In Spring 2003

TANGENT, Ore. — Ampac Seed Company has announced the release of Attention Alfalfa with StandFast™ technology for spring of 2003.

Attention is a unique variety that exhibits improved standability and quicker recovery after harvest. Attention works best for the aggressive producer who wants to harvest as much alfalfa per year as possible. Attention can be harvested as often as every 23-25 days. Attention is a very winterhardy variety that has impressive yields, high forage quality, and a solid disease package.

Because Attention exhibits substantially better standability than conventional varieties, producers will have less harvest loss because of wind or rain. The producer will also have less forage quality loss. Producers will also be able to harvest fields sooner because the alfalfa will be standing.

Attention also has very good forage quality. In forage quality tests run in Wisconsin, Attention was nearly three percent more digestible than the check variety. Attention also shows improved CP, ADF, NDF, and RFV in forage quality tests. Attention's better standability and

very good forage quality should give a producer more "harvestable quality" than other varieties on the market.

Starting in the third cutting of the planting year or in the first harvest of spring for late-summer seedings Attention will also exhibit faster recovery after harvest. This will provide additional forage production and help reduce weed pressure as Attention will shade the ground quicker. Another benefit is that Attention will be ready to harvest, and have more quality forage to harvest, quicker than conventional varieties.

McCormick USA Selects Binkley And Hurst Bros. Inc.

PELLA, Iowa — New red tractors bearing the familiar McCormick nameplate are showing up at Binkley and Hurst Bros. Inc. in Lititz.

The farm equipment dealership is among a select network of dealers chosen by McCormick International USA, Inc. to sell and service its recently reborn tractor line.

The dealership, which has been in operation for 50 years, also represents Gehl, Sunflower, Kinze, and Case lines among other brands. Leonard Hurst is the general manager of Binkley and Hurst, which is located north of Lititz on Rothsville Station Road.

Joe Michaels, general manager of McCormick USA, said the dealership was selected because of its strong commitment to service and parts support, and its good reputation among customers. He said that McCormick is taking a deliberate approach to selecting dealers all over the country.

"We're not signing up just

anyone who wants to carry McCormick. We want to find the right kind of dealer partners. We know it's important for the customer to have reliable personal contact and support from the dealer, especially with a new product," said Michaels. "Our dealers definitely have a strong enthusiasm for McCormick that will translate into success for everyone involved. Binkley and Hurst fits that profile, and we're looking forward to having them as part of our team."

Don Hoover, sales manager for Binkley and Hurst, said some customers are expressing discontent at the new platform for Case tractors. "Our past experience with the McCormick-styled Maxxum was very favorable. Not all customers are happy that Case's new models will not be the same as their familiar Maxxum. We anticipate a

favorable reaction to McCormick's tractors," said Hoover.

McCormick International now owns and operates the Doncaster, England, plant where Case IH tractors had previously been manufactured.

The McCormick line features seven tractor series ranging from 38 hp to 175 hp, and expects to expand the horsepower range to 250 hp by the end of 2003.

Recent consolidation in the farm equipment industry has pinched many dealers, said McCormick's Michaels. "Yet since we announced McCormick's return in December 2001, we've seen tremendous interest in this tractor line from both dealers and producers. We're pleased with the many topnotch dealers who have expressed interest in joining McCormick's team."

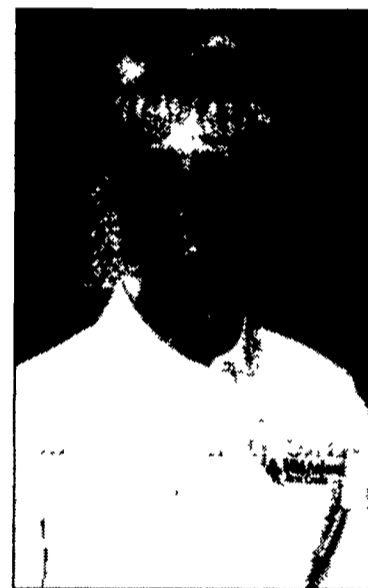
MidAtlantic Farm Credit Hires Mary Henry

LANCASTER (Lancaster Co.) — Jeff Tyson, regional vice president, has announced the hiring of Mary Henry as a commercial account executive for MidAtlantic Farm Credit's Penn region.

The Penn region consists of 15 counties in southeastern Pennsylvania. Henry will work from MidAtlantic's Lancaster office with customers in Lancaster and Chester counties.

Henry grew up in Peach Bottom, Lancaster County where she helped her father on various dairy farms. She graduated from Solanco High School and attended Shippensburg University. In addition, she is a graduate of the Central Atlantic Advanced School of Banking and the Central Atlantic School of Commercial Lending at Bucknell University.

Henry attends the Wesley United Methodist Church in Quarryville and is a member of the Lancaster South Rotary. She



Mary Henry

resides in Quarryville with her husband and in her spare time enjoys singing, attending concerts, NASCAR and riding motorcycles.

Forages, Feeding Symposium Nov. 21

LEBANON (Lebanon Co.) — Binkley & Hurst Bros. Inc. and Keenan USA have scheduled "Forages and Feeding Symposium II" here on Thursday, Nov. 21, at the Lebanon Valley Fairgrounds and Expo Center. Doors open at 8:30 a.m.

Seminar segment one, beginning at 10 a.m., is "Making the Most of Farm Forages," presented by Dr. Charlie Sniffen, president of the Miner Institute in New York. Sniffen brings more than 40 years of experience in dairy science and nutrition studies in this keynote presentation.

Seminar segment two, at 11 a.m., includes Corwin Holtz and the topic, "Proper Nutrition Plus TLC Equals Improved Herd Health." Holtz, originally trained as a tech support nutritionist, became farm manager on an 850-acre dairy operation near Homer, N.Y. He brings a wealth of knowledge in the areas of dairy technology and nutrition, and is director of technical support for CPG Nutrients.

Lunch is from noon-1:30 p.m., which includes vendor visits and a breakout session. Seminar segment three, beginning at 12:30 p.m., includes "Manure Scoring — The Proof Is In the Patties," presented by Dr. Gabriella A. Varga, a distinguished professor of animal science at Penn State. She has authored numerous papers in the area of dairy science and is well-versed in many areas of nutrition and ration preparation. Varga will address herd health issues from the "dis-

charge" end of the cow.

Seminar segment four begins at 1:30 p.m. with "Transition Cows — The Most Overlooked, Undermanaged Group On Your Farm," presented by Dr. Jeffrey D. Brose, DVM. A graduate of Kansas State University of Veterinary Medicine, Brose's private practice in southeast Nebraska offered conventional veterinary services, production

medicine, herd health, and nutrition to dairy businesses in Nebraska and Kansas. In 1999, Brose joined Monsanto Dairy Business as a technical service specialist, assisting producers in Pennsylvania, Maryland, and Delaware. Brose's interests include dairy facilities design, cow comfort, records analysis, and nutrition.

New Titan Residue Manager Simplifies Adjustments

COLCHESTER, Ill. — "The unique design and rugged construction of the new Titan Residue Manager delivers everything customers have been asking for — especially quick and easy in-field adjustments," says Lonnie Lucas of the product development department at Yetter Manufacturing Company.

The Titan fits most popular planters, and the way it mounts on the side bar adds support and strength to the planter row unit while freeing up attachment space on the face of the planter row unit. Lucas notes that, unlike some other brands, the Titan does not limit the row unit's range of vertical travel.

Made of high-yielding steel, the heavy duty 2.5-inch residue

manager arms hold the heat-treated residue manager wheels firmly in place for moving the toughest residue.

Lucas says that the Titan delivers unprecedented ease of depth adjustment. "With the field-proven QuikAdjust™, depth adjustments are made from the side of the planter unit. There is no need to crawl under the planter and, with the spring-loaded handle, no need for tools or pins. This slashes the adjustment time and results in more acres planted per day." The new optional cast aluminum floater wheels further ensure the residue manager wheels maintain a consistent depth.

The Titan can be set to float over the soil surface or, in tougher residue conditions, can be locked down for positive wheel traction.

Seedway Introduces Five New Roundup Ready Corn Hybrids

HALL, N.Y. — Seedway has added five new Roundup Ready corn hybrids to its seed corn lineup for the 2002-2003 season.

The new additions complement a comprehensive offering of grain, silage, and dual-purpose hybrids for Northeast and Mid-Atlantic growers.

Seedway E197RR, 76 days, has high yield potential and exceptional early vigor in an ultra early Roundup Ready variety. Seedway E224RR, 85 days, has

great grain yield potential and fast drydown. Seedway E375RR, 95 days, is a large, dual purpose hybrid with good stress tolerance. Seedway E525L-RR, 105 days, with a "leafy" gene provides more leaves above the ear, and stacked with Roundup Ready, offer solid overall agronomic package. Seedway E709RR, 113 days, provides exceptional dual purpose performance with leading yield potential.

New Pasture Gates From Winkel

GLEN ELDER, Kan. — Winkel Manufacturing Company has announced the availability of 10-foot, 12-foot, 14-foot, 16-foot and 18-foot pasture gates.

Constructed of 1.66 14 gauge frame and horizontal bars, the gates include solid steel hinge posts with 1.66 14 gauge. Frame

pivot hinges offer balanced in or out direction of swing and eliminate lifting to open or close.

Available with selection of chain lock, slide bolt latch, lever latch, or cowboy latch system, the gates can double up for extra wide entrances for large tillage tools or combine headers.