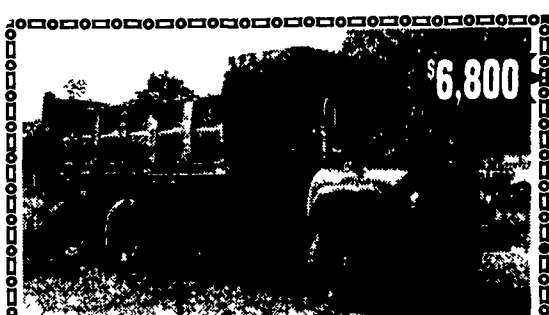


**'84 Diamond Reo, 10 Wheeler Dump**  
 18,000 Front Axle, 350 Engine, 3 Stage Jake Brake,  
 14' Steel Body, 2-way Tail Gate, w/Hitch & Plum for  
 Air Brake Trailer, Tarp **\$13,000 OBO**  
**610-287-7894**

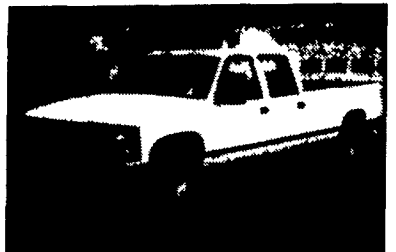


**MACK DM685 Dump Truck (1979)**  
 237 Maxi Dyne Engine, 6 Speed - Low Hole Trans.,  
 55,000 lb. Rear, Underbody Hoist Dump  
**Gerhart Machinery Company**  
**717-626-8544**

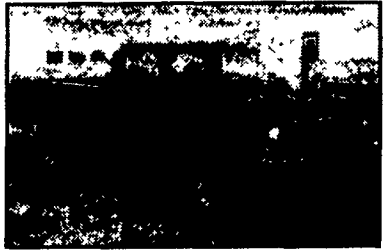
**35 TRUCKS AND TRAILERS**



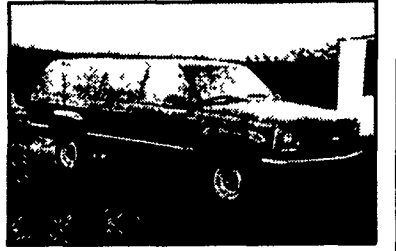
**1999 GMC SL 2500, HD 3/4-Ton 4x4,**  
 6.0 Auto, PS, PB, Cruise, Tilt, Air, Am/Fm  
 Cass, 8600 GVW, 373 Ratio, Limited Slip  
 Diff, 45,000 One Owner Miles, New  
 Radials, Dark Blue  
**\$16,900**



**1999 GMC SL 3500**  
 4 Dr Crew Cab, 350 Auto, PS, PB, Cruise,  
 Tilt, Air, AM/FM, 9,000 GVW, 95,000  
 1-Owner Miles, New Radials  
**\$13,500**

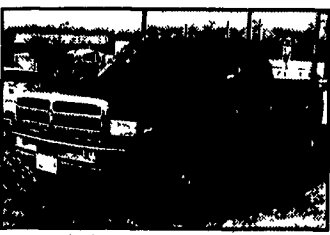


**1996 Chevy Cheyenne 2500 HD**  
 3/4 Ton, 4x4, 350 Auto, PS, PB, Cruise, Tilt,  
 Air, AM/FM Cass, 4.10 Ratio, Limited Slip  
 Diff, Towing Pkg, 62,000 Miles, New  
 Radials, Dark Green  
**\$12,900**



**1996 Chevy Cheyenne 2500, 4x4,**  
 Suburban, 350 Auto, PS, PB, Cruise, Tilt,  
 Air, AM/FM Cass, 4.10 Ratio, Towing  
 Package, 81,000 One-Owner Miles,  
 New Radials  
**\$13,500**

**Diesel Owners!**  
**Get HP & Fuel Mileage**



**We Have Performance Chips For The Following:**  
 Dodge Cummins 40-120 HP + 175 Ft. lbs. More Torque  
 Chevy Duramax 30 - 90 more HP up to 250 lbs. of Torque  
 Ford Powerstroke 60 - 80 - 120 add more HP up to 200 lbs. of Torque  
 VW TD 35 more HP add up to 35 + 45 lbs. of Torque

We carry complete line 4" exhaust systems for..... \$550  
 \*Torque Converters \*Valve Bodies \*Exhaust Brakes \*Gauges \*K&N Air Filters

Call About  
 Our Gas  
 Chips

You Get More Horsepower & Torque  
**We Carry The Best Stuff For Your Truck**  
 Propane For Diesel - Nitrus For Diesel  
 (717) 249-2255 Call Now!!! Ask for Shaun  
**LOVE'S AUTO SALES INC.**  
 1970 Spring Road, Carlisle, PA 17013  
**Sales, Service & Inspection**

Better  
 Fuel  
 Mileage

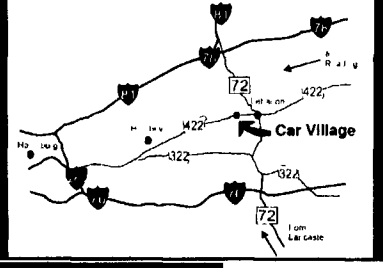
**A&J AUTO SALES**

798 E. Main St., Rt. 322 East, Ephrata, PA 17522  
**717-733-2873**

**Business Hours:**  
 Mon.-Fri. 9 to 9;  
 Sat. 9-4

2300 W.  
 CUMBERLAND ST.  
 (Rt. 422)  
 LEBANON, PA 17042  
 (Across From  
 Lebanon Valley Mall)

**CAR VILLAGE**  
**HEAVY DUTY TRUCKS**



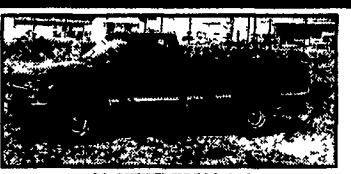
PHONE 717-274-200 Toll Free 1-800-650-1420



**\$19,900**  
**97 FORD F250 4x4 PICKUP**  
 Very Nice, Heavy Duty 3/4 Ton, Powerstroke Turbo  
 Diesel, AT, AC, Dual Tanks, Tow Pkg., Alloy Wheels, A  
 Must See.



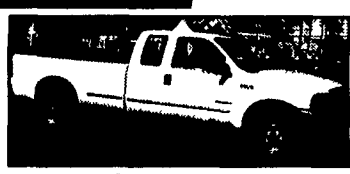
**SHORTBED SUPER CAB**  
**99 FORD F250 XLT**  
 4 Wheel Drive, Very Nice, Only 50,000  
 Miles, Powerstroke Turbo Diesel, A/C,  
 Loaded XLT, Aluminum Wheels.



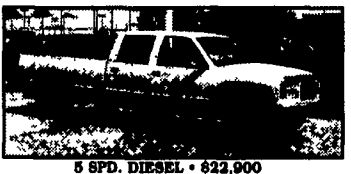
**99 CHEVY K2500 4x4**  
 Very Nice Heavy Duty 3/4 Ton. Only 46,000 Miles.  
 Remainder New Tk. Warranty. High Output 6.5  
 Turbo, Diesel, AT, A/C. Fact. Tow Pkg. Lots Of TK  
 For The Money. Only \$21,900.



**DIESEL CARGO VANS**  
**2 AVAILABLE**  
 Extended Length, Powerstroke Diesel, Auto.,  
 A/C, Tow Pkg., Remainder New Tk. Warranty



**FORD SUPER CABS**  
**4 WHEEL DRIVE**  
 Diesel Power, Auto., A/C, Quad Doors, Capt. Chairs,  
 Aluminum Wheels, Tow Pkg. Loaded XLT Pkg



**5 SPD. DIESEL • \$22,900**  
**98 GMC K3500 CREW CAB**  
 Single Rear Wheel High Output, 6.5 Turbo Diesel,  
 5 Spd., A/C, Limited Slip 4.10 Gears, Only 59,000  
 Miles, Remaining Factory Warranty



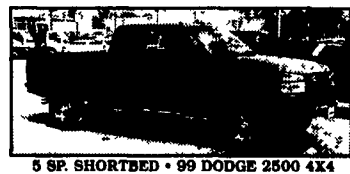
**\$19,900**  
**98 FORD E350 SUPER CARGO VAN**  
 Heavy 9400 GVW, Powerstroke Turbo Diesel, AT,  
 A/C, Only 64,000 Miles, Remainder New  
 Tk Warranty



**VINYL SEAT & FLOOR, 4 WHEEL DRIVE**  
**2000 FORD F350**  
 Real Clean, Hard to find, Powerstroke Turbo Diesel,  
 Auto., Tow Pkg. Only 48,000 MI., Remaining  
 new tk. warranty.



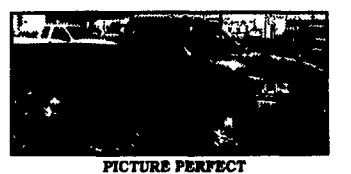
**NOT FANCY**  
**JUST TRUCK**  
**2000 FORD F250 SUPER DUTY**  
 Put It To Work, Vinyl Seat & Floor, Heavy Duty 3/4  
 Ton Powerstroke Turbo Diesel, Auto



**5 SP. SHORTBED • 99 DODGE 2500 4X4**  
 Cummins Turbo Diesel, 5 Sp., Cold A/C, Loaded,  
 All Options, Only 41,000 Miles  
 2 Available



**6 WHEEL DRIVE 2000 FORD F350**  
**SUPER CAB** Dually, 4x4, Powerstroke Turbo Diesel,  
 Tow Pkg., Alloy Wheels.



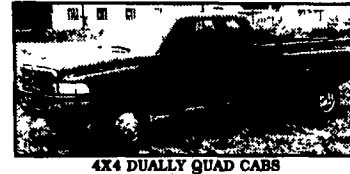
**PICTURE PERFECT**  
**99 DODGE 2500 4x4**  
 You Will Like This One. Only 28,000 Miles, 24 Valve  
 Cummins Turbo Diesel, Auto., Tow Pkg., All Options.



**2 WHEEL DRIVE**  
**2001 DODGE 2500**  
 Very Clean, Auto., 24 Valve Cummins Turbo Diesel,  
 A/C, Tow Pkg., Remaining New Tk. Warranty



**6 SPD. CREW CAB • 4 WHEEL DRIVE**  
**99 FORD F350 XLT LARIAT**  
 Great Tow Machine, Powerstroke Turbo Diesel,  
 6 Spd., A/C, Capt. Chairs, Console



**4X4 DUALLY QUAD CABS**  
 Dodge - Cummins Diesel, 2 Available, Auto &  
 5 Spd., Fact Tow Pkg., Loaded Laramie SLT,  
 Remaining New Tk Warranty

**FLATBEDS, WORK & DUMP TRUCKS**



**4 DOOR MECHANICS**  
**01 FORD 450 SUPER DUTY**  
 Only 800 Miles, Remaining New Tk. Warranty,  
 Powerstroke Turbo Diesel, Auto, A/C, Vinyl Seat & Floor



**4x4 CREW CAB FLATBED**  
**2001 FORD F350 SUPER DUTY**  
 Brand New Eby Flatbed, Gooseneck & Class 4 Hitch/  
 Powerstroke Diesel, Auto, Loaded XLT, Only 500 Miles



**LANDMASTER DUMP • 98 GMC HD 3500**  
 Dump Body & Utility Body Combines, Great Idea,  
 Turbo Diesel Auto, A/C Tow Pkg., Only 64,000 Miles,  
 Remainder New Tk Warranty



**4x4 MECHANICS TRUCK**  
**2000 CHEVY K3500**  
 Gas, V8, Auto., A/C, Only 30,000 Miles, 11 Ft. Body,  
 Very Nice



**NO CDL REQUIRED**  
**2000 FORD F650 FLATBED DUMP**  
 Brand New 15 Ft. Steel Bed & Holst, Powerstroke  
 Turbo Diesel, Allison Auto., Only 12,000 Miles,  
 Priced Right. \$33,900



**4x4 CHASSIS CAB**  
**97 FORD F350**  
 Only 58,000 Miles, 161 W.B., 84" C.A., Powerstroke  
 Turbo Diesel, 5 Spd., A/C.



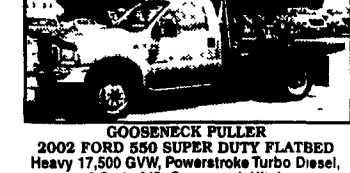
**12 Foot Flatbed Dump**  
**2000 Ford 450 Super Duty**  
 Real Nice, 31,000 Miles, Powerstroke Turbo Diesel,  
 6 Spd., A/C, Tow Pkg.



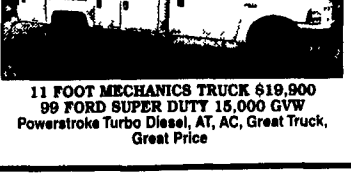
**4 DOOR MECHANICS TRUCK**  
**2001 FORD F350 4x4**  
 Excellent Condition, Powerstroke Diesel, AT, A/C,  
 Reading Box, Only 22,000 Miles.



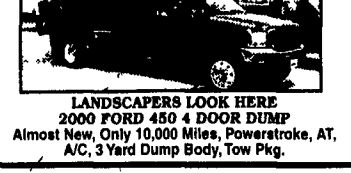
**15 FOOT BOX • 2000 CHEVY CUBE VAN**  
 Very Clean Inside & Out, Diesel, AT, A/C,  
 New Service & Insp



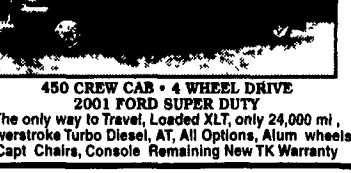
**GOOSENECK PULLER**  
**2002 FORD 550 SUPER DUTY FLATBED**  
 Heavy 17,500 GVW, Powerstroke Turbo Diesel,  
 6 Spd., A/C, Gooseneck Hitch



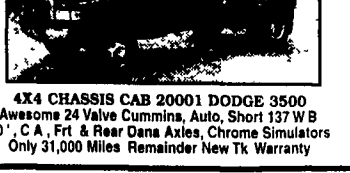
**11 FOOT MECHANICS TRUCK \$19,900**  
**99 FORD SUPER DUTY 15,000 GVW**  
 Powerstroke Turbo Diesel, AT, AC, Great Truck,  
 Great Price



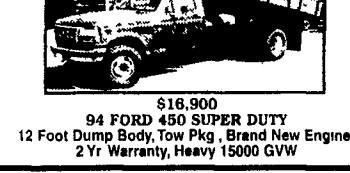
**LANDSCAPERS LOOK HERE**  
**2000 FORD 450 4 DOOR DUMP**  
 Almost New, Only 10,000 Miles, Powerstroke, AT,  
 A/C, 3 Yard Dump Body, Tow Pkg.



**450 CREW CAB • 4 WHEEL DRIVE**  
**2001 FORD SUPER DUTY**  
 The only way to Travel, Loaded XLT, only 24,000 mi,  
 Powerstroke Turbo Diesel, AT, All Options, Alum wheels,  
 Capt. Chairs, Console Remaining New TK Warranty



**4X4 CHASSIS CAB 2001 DODGE 3500**  
 Awesome 24 Valve Cummins, Auto, Short 137 W B  
 60" C.A. Frt & Rear Dana Axles, Chrome Simulators  
 Only 31,000 Miles Remainder New Tk Warranty



**\$16,900**  
**94 FORD 450 SUPER DUTY**  
 12 Foot Dump Body, Tow Pkg., Brand New Engine,  
 2 Yr Warranty, Heavy 15000 GVW