

94 Komatsu PC45, 3280 Hrs, Cab, Steel Tracks, Backfill Blade \$16,500



96 Case 580 Super L, Cab, 4x4, Ext Hoe, 2700 Hrs \$28,500
 89 JD 310C, Cab, 4x4, 8000 Hrs \$13,900
 96 Ford 555E Backhoe, 2100 Hrs \$15,000
 94 Ford 555D, Cab, Ext Hoe \$15,000
 Ford 655A Backhoe, OROPS, 2WD \$8,900



89 Cat 953, Cab, 10,000 Hrs., 50% UC \$35,000
 94 Cat 953B, Cab, New UC, 8200 Hrs. \$65,000



94 Cat 416B, Cab, 4x4, Ext Hoe, Very Clean \$24,500
 95 Chevy 3500 Service Truck, 6.5 Dsl \$8,900
 88 Ford F350 Dually, Mechanics Body, Crane, Electric Lift Gate, New Motor, New Tires \$6,900
 Kubota L2650 4x4 Loader, 2900 Hrs. \$8,900



96 Case 9020B, 2900 Hrs., 8'6" Wide \$39,500
 90 Hitachi EX150, 7500 Hrs., Plumbed \$26,000
 93 Komatsu PC150, 35,000 lb. Excavator, 5700 Hrs. \$34,000
 91 Komatsu PC150LC \$29,000



83 Cat 973, Cab, Good UC \$32,000



94 Cat 311, 4370 hrs \$28,000
 93 Cat 311, 3400 hrs. \$28,000



93 Komatsu PC40, 4400 Hrs. New Tracks \$13,000
 96 Bobcat 320, 1700 Hrs, Rubber Tracks w/Blade \$9,500



96 Cat 315L, 6800 hrs, Very Clean \$46,000



97 JD 7775, 1600 Hrs., Good Tires... \$10,500
 96 JD 6675, 1130 Hrs., Good Tires... \$9,800

97 NH LX885, 3200 Hrs., New Tires \$10,750

New Additions:

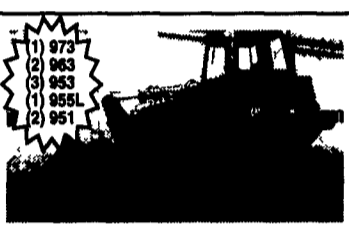
87 JD 790D, New Paint, 11'2" Wide, 52,000 lbs \$24,000
 87 Case 888 Call
 96 Komatsu PC40FR, 2752 Hrs \$15,500
 97 Komatsu PC40FR, 2950 Hrs, \$16,000



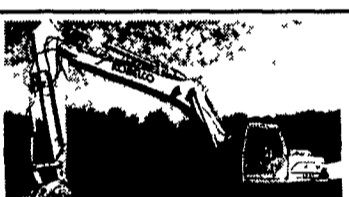
97 Linkbelt LS2650, 28,000 Lb Machine, 3900 hrs. \$26,000
 88 Linkbelt LS2800, 44,000 Lbs., 5600 Hrs \$21,500



93 Mustang 940, 3400 Hrs, T Bar \$6,500
 93 NH 785, 3800 Hrs, 2-Spd \$8,900
 94 NH 783, 2400 Hrs., Bucket & Forks \$9,500
 97 Dig-It, 800 Hrs \$8,500
 93 Case 1840, 3000 Hrs. \$7,900
 96 Case 1840, 1500 Hrs. \$9,000



87 Cat 963, Cab, 4-in-1 Bucket, 90% Cat U C \$39,000
 87 Cat 963, Open ROPS, New Tracks \$35,000
 95 Cat 963, Open ROPS, 7800 Hrs CALL



96 Kobelco SK270, 7900 Hrs., Plumbed \$36,000



96 Hitachi EX100-5, 1860 Hrs., Bolt-On Rubber Pads, Plumbed, AC. \$36,500
 96 Hitachi EX100-5, 2720 Hrs., Bolt-on Rubber Pads, AC. \$37,500
 94 Hitachi EX100-3, 3740 Hrs., AC \$26,500



96 Hitachi EX120-5, 2550 Hrs., Bolt-On Rubber Pads, AC \$39,500
 95 Hitachi EX120-3, 5700 Hrs., AC \$27,500
 94 Hitachi EX120-3, 5550 Hrs., Plumbed \$28,000
 91 Hitachi EX120-2, 2830 hrs \$25,500



92 Cat 307 SSR, Blade 4800 Hrs \$19,500

95 Cat 307, Rubber Tracks, Backfill Blade, 2000 Hrs 15,000 lbs \$24,000
 96 Komatsu PC75UU, Cab, 3860 Hrs., Rubber Tracks, w/Blade \$19,500
 94 Komatsu PC75UU, 4971 Hrs., Rubber Tracks, Blade, 4900 Hrs \$19,000
 94 Komatsu PC75UU, 4900 Hrs., \$19,500
 95 Komatsu PC80, Rubber Tracks, Backfill Blade, 3700 Hrs \$22,500
 92 Komatsu PC50UU-2, Canopy \$12,000

88 Model, 455G, Cab \$19,500
 JD 455D, Crawler Loader, New UC \$14,900
 Cat 977L, Good UC \$15,000
 Cat 951C \$13,500
 79 Cat 955L, 13X Series \$19,500
 Cat 951B, Very Good UC, No Rops \$9,500
 85 Cat 224 Mobile Excavator, Clean, 3rd Valve \$12,500
 95 Mec 1948HT Electric Manlift \$2,900
 Ingersoll Rand Light Tower, Deutz Diesel \$3,500
 Gallion T500 Motor Grader, Good Tires, Good Paint, Tight, Extra Filters, Manuals, Rebuilt Hyd Pump, Cummins Engine \$7,500



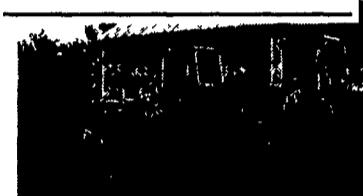
96 Hitachi EX55UR, Cab, 2900 Hrs, Rubber Tracks, Backfill Blade \$17,500



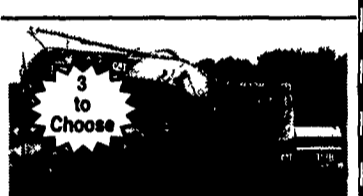
96 Komatsu PC35R, Canopy, 2480 Hrs., Rubber Tracks, Backfill Blade \$13,500
 95 Komatsu PC30, Cab \$14,000
 94 Komatsu PC30, 2600 Hrs \$12,500
 94 Komatsu PC25, 1427 Hrs w/Hammer \$15,000
 94 Komatsu PC25, 3100 Hrs \$12,500
 95 Komatsu PC20, 2300 Hrs \$10,500



97 Ingersoll Rand VR80B, Telescopic Forklift, 3200 Hrs, 35' Reach 6000 lb Lift \$29,500
 97 Ingersoll Rand VR90B, 1950 Hrs, 9000 lb Lift, 36' Reach \$32,500



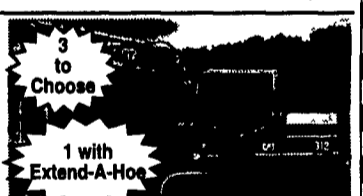
94 JD 544G, 5900 Hrs, Good Tires \$39,000
 90 JD 644E, Rebuilt Engine, New Paint \$30,000
 84 Cat 910, Good Tires, 6000 Hrs. \$15,500



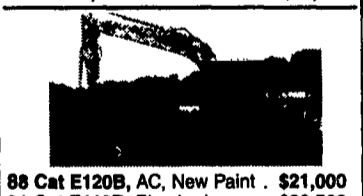
97 Cat 312B, AC, 3000 hrs. \$42,000
 97 Cat 312B, AC, 2200 hrs \$42,000
 97 Cat 312B, AC, 4580 hrs \$41,000



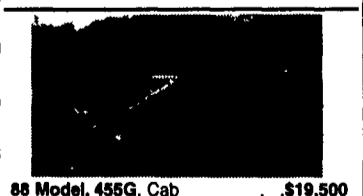
89 Cat D3C, OROPS, 4380 Hrs, 80% UC \$22,500



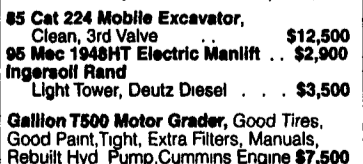
96 Cat 312, AC, 5100 Hrs., New Paint \$32,500
 93 Cat 312, 6800 Hrs, w/Ext Hoe \$33,000
 93 Cat 312, 5700 Hrs., AC \$31,500
 93 Cat 312, 3700 Hrs \$31,000



88 Cat E120B, AC, New Paint \$21,000
 91 Cat E110B, Plumbed \$20,500
 91 Cat E120B, 4700 Hrs, New Paint \$23,000



Deutz Allia 7085 4x4 Tractor w/ Highway Mower.....Call For Info



JD 550G w/ 6-Way Blade, New Paint, Good Bottom \$26,500
 New 48" Pallet Forks \$550

1A CONSTRUCTION EQUIPMENT



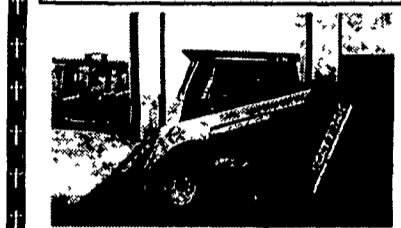
\$13,000
6000LB 4WD, Lift King
 Shuttle shift, 14' Lift Height



\$11,800
Lift King 6000# Forklift
 4WD, 4W Steer Perkins Diesel, 28' Lift Height, Side Shuttle

717/484-2233

100% Financing w/Good Credit at 8% or less Int. in PA



(3) 97 Scat Tracks
 (2) 1700C (1) 1800C,
 Good Machines.....\$10,800



NH LX885, 240 Hrs. w/New Bucket, Like New..... \$16,500



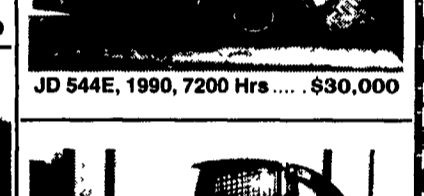
Bobcat 873 w/1700 Hrs.. \$14,500



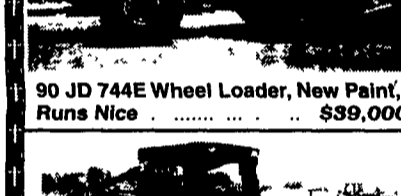
JD 544E, 1990, 7200 Hrs \$30,000



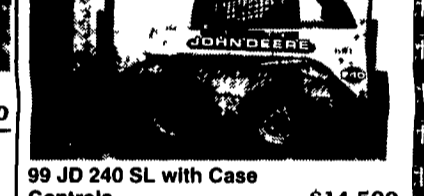
90 JD 744E Wheel Loader, New Paint, Runs Nice \$39,000



99 JD 240 SL with Case Controls. \$14,500



99 NH Skid Steer XL985 \$18,500



Cat 311, 1993, 3100 Hrs., New Paint, Nice .. \$27,500



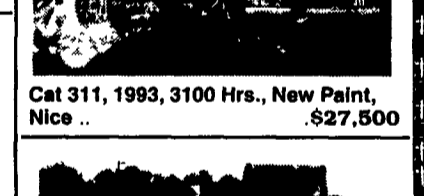
99 Cat 226 Skid Loader, 600 Hrs., Cab & Heat..... \$15,500



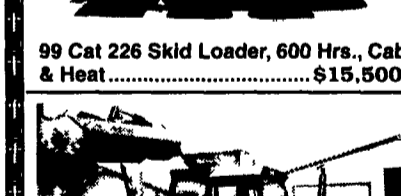
89 Cat DC3 w/6-Way Blade, Cab, Good Condition \$23,000



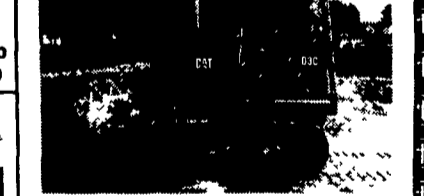
Deutz Allia 7085 4x4 Tractor w/ Highway Mower.....Call For Info



89 Cat DC3 w/6-Way Blade, Cab, Good Condition \$23,000



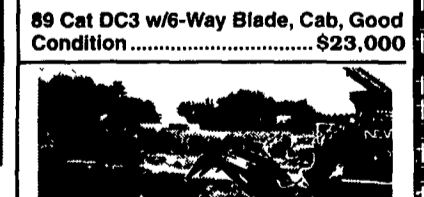
JD 260, 14" Rubber w/Steel Tracks \$19,000
 Backhoe Available \$4,800



89 Cat DC3 w/6-Way Blade, Cab, Good Condition \$23,000



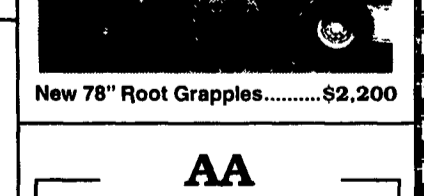
Deutz Allia 7085 4x4 Tractor w/ Highway Mower.....Call For Info



89 Cat DC3 w/6-Way Blade, Cab, Good Condition \$23,000



JD 550G w/ 6-Way Blade, New Paint, Good Bottom \$26,500
 New 48" Pallet Forks \$550



89 Cat DC3 w/6-Way Blade, Cab, Good Condition \$23,000

AA Equipment
717/529-2512
 No Sunday Calls
 1797 Robert Fulton Hwy.
 Quarryville, PA 17566
 • We Buy & Sell •
 Financing Available

Rentals Available Day, Week, or Month

Weaco Equipment

Financing and Lease Purchase Available No Sunday Calls

645 Swamp Church Rd. Reinholds, PA
717/336-7375 877/529-9328