

Public Auction Register
 Closing Date Monday 5:00 P.M.
 of each week's publication
 Internet Sale Register will be updated
 by Friday at 12 Noon
ATTENTION AUCTIONEERS
 All sales register info needs complete address,
 street, town, county & state.

TUES OCT 29 - 10AM Const equip, tools, skid loader, trucks, trailers, tractors, at Leb Area Fairgrounds, Leb Co from Pa Turnpike Leb/Lanc exit, N Rt 72 to 3rd light, R on Rocherty Rd to fairgrounds From 181 Lickdale exit, S Rt 72 thru Leb, pass Lowes, L at next light onto Rocherty Rd to fairgrounds, enter at 2nd driveway By Bachman Auct 717-867-1809

TUES OCT 29 - 10AM Const equip, tools, trucks, skid loader, trailers, tractors at Leb Area Fairgrounds, Leb Co, PA from Pa Turnpike, Leb/Lanc exit, N on Rt 72 to 3rd traffic light, R on Rocherty Rd to fairgrounds From 181 Lickdale exit, S on Rt 72 thru Leb, pass Lowes, turn L at next traffic light onto Rocherty Rd to fairgrounds Enter at 2nd driveway By Ginder & Son Inc., 717-273-9244, 717-274-2588, 717-269-8516

TUES OCT 29 - 4PM Real estate, 2 bdrm mobile home, 2 car gar, barn, on 5 acres woodland, at 580 Mohns Hill Rd, Reinholds Rt 272 N to Weaver Mkts at intersection of Rt 272 & Rt 897 L onto Rt 897 N Approx 1 mi, R onto Mohns Hill Rd, no outlet rd, approx 1.3 mi to prop on L By Kline Kreider & Good, 717-445-4309, Open House Oct 12/19/26 1-4PM

TUES, OCT 29 - 5PM Machinist Tool Shop auction of equipment, tools, shop furniture, office furniture, gates open 3PM, 4400 Lewis Rd, Harnsburg, PA, Ziegler Auctioneers, zieglerauction.com

TUES OCT 29 - 5:30PM Annual Garage Door Auction for Shoff Door Co., Shippensburg Fair-

grounds, Rt 81 to exit 29 (Rt 11), south to last light, left on Hostetter Ave 2 stop signs and left to fairgrounds Jack Goodbar, AU-0003575R 614-837-4710

TUES, OCT 29 6:30PM Real Estate, 35 Hatville Rd, Lanc Co, PA, Turn off Rt 340 1/2 Mi E of Intercourse on Hatville Rd to Sale, Auct Robert E. Jeffrey R & Michael I Martin, AU-000580L, 656-7770

WED, OCT 30 10AM Sewing machinery, equip, more, at the former R&M Dress Co, 722 Walnut St, Lebanon, Pa, contact Col Steve Sitar & Co www.sitarauctions.com 570-586-1397 for details

WED, OCT 30 - 11AM Dairy Show & Sale New Holland Sales Stables, Inc 101 W Fulton St, New Holland, Pa

WED OCT 30 - 2PM Going out of business, Woodworking tools, power tools, mach, 2 trucks, at 289 W Maple Grove Rd (close to Bowmansville), from Rt 625 in Bowmansville, W Maple Grove Rd approx 1 mi to auct on L Or from 897 in Fivepointville to W Maple Grove Rd approx 1 1/4 mi to auct on R Brecknock Twp, Lanc Co, by Kline, Kreider & Good 499 2116, 3433, 717-445-4309

WED OCT 30 - 2PM Antiques, household goods, collectibles, primitives, modern & antique tools Horst Auction Center, corner of Rt 322 & Durlach Rd, 2 1/2 mi W of Ephrata Horst Aucts AU *98L 717-859-1331 or 738-3080

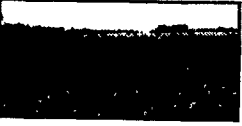
ABSOLUTE AUCTION

Sat. Nov. 2

10:00

S. Christian Co., KY
 One mi. w. of
 Pembroke on Hwy.
 41. See Signs.

**138.37 ACRES
 ROWCROP FARMLAND
 2 TOBACCO BARN
 ALL CROP BASES
 REMAIN WITH
 FARM**



**ALSO SELLING:
 I.H. TRACTOR •
 DISC • PLOW •
 BUSH HOG &
 MORE
 KNOWN AS DENNIS
 & INEZ FARMER
 PROPERTY**

FOR DETAILS
 turner-auctions.com

**TURNER &
 ASSOCIATES
 1-888-303-8862
 (270)887-9977,
 885-6789
 L. Turner, Bkr.
 439-7786
 T. Anderson, Bkr.
 886-9042**

**6/10 ACRE PROPERTY
 WEST COCALICO TOWNSHIP
 NEAR MT. AIRY
 PUBLIC AUCTION
 TUES., OCT. 22, 2002
 AUCTION TIME 5:30 P.M.**

Directions: From Ephrata take Schoeneck Road to Schoeneck, turn left onto Mt. Airy Road, turn right onto Girl Scout Road to property on right. Lancaster Co., PA.



1350 Girl Scout Road, Denver (near Mt. Airy)
2-1/2 STORY BRICK & VINYL HOUSE:
 with modern kitchen with oak cabinets with built-in range & microwave, large dining room with play area, large living room with built-in cabinets & open stairway. New addition in 1994 with modern den with coal stove, laundry, large rear deck and 1/2 bath downstairs. **Upstairs** has 3 bedrooms, modern bathroom with walk-in linen closet, attic storage, partial basement with recent new oil hot air furnace, 200 amp service, well & new septic system. **Oversized 2 car garage** w/openers, insulated & finished.

•Macadam Driveway •Garden Area
 For appointment or help to obtain bank financing call Aaron E. Martin Auctioneer at 733-3511.

TERMS: 10% down at auction, balance at final settlement on or before December 2, 2002.

NOTE: Property is in excellent condition, has hardwood floors & some replacement windows. Near Middlecreek Wildlife Project.

Attorney: Michael P. Kane 299-5251

Auction By:
DARRYL L. & SUE A. MARTIN
 (717) 738-2920

AARON E. MARTIN AUCTION SERVICE
 Professional AUCTIONEERING
 410 West Church Rd.
 Ephrata, PA. 17522
 (717)733-3511

**CHRISTIANA FIRE COMPANY
 1ST ANNUAL
 HORSE, CARRIAGE
 AND TACK AUCTION**

SAT. NOVEMBER 9, 2002, 9:00 A.M.

Located at Ben K. Stoltzfus Farm
 82 Upper Valley Road, Christiana, PA

Tack Sale. Starts 9:00 A.M. Hitching Horses 9:00 A.M. Carriages 11:00 A.M.

75-100 head Horses and Ponies 12 noon
 Horse sale includes a few ponies. Broke to ride and drive. A few local workhorses, ready for work. Billy Howard will be here with workhorses ready for fieldwork. Driving Horses consigned by John Whiteside, Christ Z. Stoltzfus, Ivan Petersheim, Stevie Stoltzfus, Ben K. Stoltzfus, Sam Esh Jr., John Shirk, Abe and Roy Miller from Ohio. Saddlebreds — Standardbreds — and Morgans ready for weddings. Watch for more listings later. **Local Consignments Welcome For More Information. Call 610-593-4922.**

New and used tack includes, saddles, bridles harness, new blankets various sizes, halters, buckets, starting at 9 A.M. till horse sale and after horse sale, 16-12 foot sections round pen panel gates.

Carriages new and rebuilt fiberglass storm front carriages, rebuilt combination market wagon, new spring wagon, new open buggy, new breaking carts, good used carriages etc., double hitched poles, new batteries, carriage accessories.

For more information on carriages call 717-442-2993 between 9:30-9:45 a.m. or 12:30-1:00 p.m. Carriages receiving dates Fri. Nov. 8th and Sat., Nov. 9th till 8:00 a.m.

All items sold on a commission basis
 Credit Cards accepted.
 No out of state checks.

Terms by
 Christiana Fire Company
 Phone (610) 593-2142
 P.O. Box 46, 214 S. Bridge St., Christiana, PA 17509

Not responsible for accidents
 Plenty of free parking

Plenty of homemade food
 Chicken B.B.Q.
 Proceeds benefit medical bills

Auctioneers
 Clarence Shirk AU-002750-L
 Ben K. Stoltzfus AA002782-L
 Christ Z. Stoltzfus AA002861-L

Consignment Auction

**MONDAY,
 NOV. 4, 2002
 8:30 AM**

Location: 251 Race St., Myerstown, PA. Rt. 501 North to Myerstown, turn E on Park St. 3 blocks to sale. I-78 to exit 13, Rt. 501 South 8 miles to Park St., turn R and 3 blocks to sale.

Consignments accepted on location 8 to 4 Oct. 31, Nov. 1 & 2.

Tractors & Skid Loaders

Case 970 w/cab & duals; 1955 Oliver Super 55 diesel; 1949 Oliver 77 gas w/hydraulics, NH LX665T skidsteer loader; S/S pallet forks; JD3020D wide front, rebuilt engine; AC 185D w/quickhitch; IH154 lowboy w/mower and 3 ft hitch; Farmall 300 gas, try, FH; Ford 2000 gas w/cab, mower and snowblade, Farmall SMTA w/wide front (bad T/A), Bobcat 530 gas skid loader, Kubota 2250 4x4 w/loader (only 400 hrs)

Tillage

Ford 151 4x16 reset plow w/curved colters; Ford 150 3x16 plow w/white bottoms, Brillion 19' wing packer; Brillion 16' transport packer; Brillion 10' cultmulcher; Brillion 13' cultmulcher; Krause 1900 21' rock flexdisc; IH 720 4xplow; Sunflower 9T disc chisel, White 271 20' rock flex disc; Hesston 2540 9T disc chisel (nice) McKee 10' 3pt Danish cultivator w/rolling basket; white 271 21' rockflex disc; Brillion 25' X-fold packer; Kewanee 1010 16' flat fold disc; Bush Hog 12T pull chisel; JD MX225 7' offset disc (new); IH450 3x16 ASR 3pt plow; IH 6' offset disc; Hugo 12' roller harrow; IH and MF 4x rollover plows for parts

Planting

Great Plains 21X drill w/grass & press wheels; JD FB-B drill w/grass; IH564R planter; IH 400 cycloplanter for parts

Trailer & Miscellaneous

50KW PTO generator; Joy 150CFM compressor, Honda 3500 generator; Shirk 8'x16' 18,000 GVW tri-axle trailer w/surge brakes and pintle hook; Gehl 7190 PTO feed cart (good cond); New Idea 351 PTO manure spreader (new chain and paint); Ford 5' 3pt mower; McMiller 9" post hole digger for skid loader; IH 7' 3pt blade; Lely 3 pt spin spreader; pull type spin spreader; Danuse 9" PHD; NH 9' semi-mt sickle mower; IH 7' fast hitch blade, IH 6' fast hitch disc, 3) IH 3X fast hitch plows; IH FH sickle mower; cab to fit Oliver 1650; cab to fit MF 1155; Glenco chisel shanks; 18.4x38 snap on duals; 18.4x38 9 bolt duals; corn drag elevator; JD plow colters; IH 45 f cult shanks, 8' land roller; small gravity wagon; new 14" extensions for gravity wagon; front pusher off WD45

Harvesting

NH790 harvester, NH824 2R corn head; Gehl 1060 w/2RN and hay pick-up; JD3950 harvester w/heads; Victor 200 silage blower (like new); Gehl 99 forage blower

Haying Equipment

NH320 baler w/thrower; JD1219 haybine; JD1209 haybine; Deutz 2.50 round baler; NH254 3pt rake/teeder; Brady 722 6' flail chopper; Oliver/MM hay baler

All items are sold "as is" and "where is" with no guarantees expressed or implied
TERMS CASH complete payment on auction day Checks accepted with bank letter of credit

DAVID WENGER
 717-866-2135



HARRY BACHMAN
 717-867-1809

GLENN WENGER
 717-866-2130

LEBANON VALLEY
 AUCTION COMPANY, INC.
 2051 Horseshoe Pike
 Annville, PA 17003
 RY000014-L

DENNIS GRUMBINE
 717-866-2585

AUCTIONEERS:
 Harry Bachman • AU-000033-L

Glenn T. Wenger • AU-002510-L
 Blaine Rentzel • AU-761

**COMPLETE LIQUIDATION AUCTION
 OF ALL CONSTRUCTION EQUIPMENT, AGGREGATE,
 TRUCKS & SUPPORT EQUIPMENT
 ARLINGTON BRIDGE INC.
 FRIDAY, OCTOBER 25 @ 9:30 A.M.
 SHENANDOAH (NE of Harrisburg), PENNSYLVANIA**

DIRECTIONS: (approx. 60 miles NE of Harrisburg) Take I-81S to exit 124B. Rt. 61N to Rt. 924N, to Rt. 54W. Continue approx. 3 blocks right onto Vine St., sale on left. **Address:** 114-116 N. Vine St., Shenandoah, PA 17976.

NOTE: After years of successful operation, Arlington Bridge Inc. has commissioned Alex Lyon & Son Sales Managers & Auctioneers, Inc. to completely liquidate their construction equipment, trucks and support equipment to pursue other business interests, at absolute unreserved auction.

HILITES: Hydraulic Excavators: Cat 312, Cat E120B, Cat E70B, Hitachi EX120-2, Komatsu PC60-7, Yanmar B50-1, **Rubber Tired Excavator:** Gradall G3W, **Crawler Tractors:** Cat D3, **Crawler Loaders:** Cat 935B, **Tractor Loader Backhoes:** Case 580K (4x4), **Forklifts** Hyster 30, **Skid Steers:** (2) New ProTough 1700, Bobcat 853, **Skid Steer Attachments:** New Augers, Grapple & Dirt Buckets, Dozer Blades, Forks, **Air Compressors:** (2) Joy 125CFM, **Generators:** Demco 55kw, **Pumps:** Peabody Barnes 2" & 3" Submersible, Homelite Trash Pumps, (2) Flyght 6" Submersible, Graco Double Diaphragm Pumps, **Aggregate:** New ProTough 400 Mobile Screener, **Flatbed Truck:** Mack MB401 Cabover, **Dump Trucks:** 1977 Ford LTS9000, Diamond Reo C8242D-11, **Mason Dump:** 1981 Ford F350, **Cab & Chassis:** Ford F350, **Utility Trucks:** (2) Grumman (tool racks), **Pickup Truck:** Chevy Custom Deluxe 10, **SUV's:** 1997 Ford Bronco II XLT 4x4, 1984 Ford Bronco XLT 4x4, **Utility Vehicles:** Bomardier Snow Machine, **RV's:** Skyline House Trailer, **Tagalongs:** New ProTough 6 Ton, Road Hawk 8x17', **Support:** Jig Saws, Hammer Drill, Planers, Lathe, Table Saw, Radial Arm Saws, Belt Sander, B&D Work Mate, Heaters, Carter 10/30 Belt Dewatering Press, Lawn Mower, Concrete Vibrator, Tanks, Battery Chargers, Floor Jacks, Oil Pumps, Concrete Saws, Concrete Blankets, Shop Compressors, Weed Wackers, Road Signs, Welding Rods, Pipe & Fittings, Hoses, Wrenches, Mobile Phones, Tool Storage Compartments, Tool Boxes, Electric Motors, Wheelbarrows, Wire, Tires, Spark Plug Sets, Truck Sander, Wood Forms, Concrete Forms, Sheeting Material, Fence, Rebar and MORE!!

SALE SITE PHONE: (570) 462-0422
PENNSYLVANIA LICENSE #: AU-003051-E.

FINANCING AVAILABLE FOR PRE-APPROVED PURCHASERS:
Financial Federal Credit Inc. - Call Anne Landstrom or Richard Prophet toll free at 866.432.0847.
Smart Leasing Inc. - Call Jim Green 800.798.6862, or 610.909.9436 evenings & weekends.

TERMS & CONDITIONS: "Cash or Company Check" accompanied by current "Bank Letter of Guarantee", made payable to Alex Lyon & Son. **NO EXCEPTIONS!! Everything sells "AS IS", "WHERE IS", everything sells to the highest bidder without minimums or reserve.**

Alex Lyon & Son
 SALES MANAGERS & AUCTIONEERS, INC.
 Syracuse (Evenings)
 (315) 637-8912

Alex Lyon & Son
 SALES MANAGERS & AUCTIONEERS, INC.
 PO Box 610, Bridgeport, NY 13030
 www.lyonauction.com

Bridgeport
 (315) 633-2944
 (315) 633-8010 FAX