

Staunton Weekly Feeder Cattle Sale

Richmond, Va.
October 7, 2002

Report Supplied By USDA

WEEKLY AUCTION at Staunton, Oct. 4 — FEEDER CATTLE: 1160 head. Prices per cwt. based on in weights.

STEERS: 750 head. Med./Lge. 1: 300-400 lb 80-91.00; 400-500 lb 78-90.00; 500-600 lb 75-84.00; 600-700 lb 74-84.00; 700-800 lb 73-83.75; 800-900 lb 73-82.60; 900-1000 lb 68-72.50. Med./Lge. 2: 300-400 lb 81-86.00; 400-500 lb 74-84.00; 500-600 lb 70-78.00; 600-700 lb 70-77.00.

HOLSTEINS STEERS: 15 head. Med. and Lge. 2: 300-400 lb 50.00; 500-600 lb 47.00; 600-700 lb 45.00.

HEIFERS: 310 head. Med./Lge. 1: 300-400 lb 72-82.00; 400-500 lb 68-75.00; 500-600 lb 68-73.00; 600-700 lb 66-74.00; 700-800 lb 64-67.75. Med./Lge. 2: 300-400 lb 70-80.00; 400-500 lb 68-75.00; 500-600 lb 65-71.00; 600-700 lb 62-71.00.

BULLS: 85 head. Med./Lge. 1: 200-300 lb 80-88.00; 300-400 lb 78-88.00; 400-500 lb 72-77.00.

Roanoke-Hollins Weekly Feeder Cattle Sale

Richmond, Va.
October 8, 2002

Report Supplied By USDA

Hollins Semi-Monthly Graded Feeder Cattle Sale: 163 head state graded.

STEERS: 81 head. Med./Lge. 1: 300-400 lb 85-86.50; 400-500 lb 78-83.00; 500-600 lb 77.50-81.75; 600-700 lb 74-76.00; 700-800 lb 70.50-74.50. Med./Lge. 2: 300-400 lb 78.00; 400-500 lb 78-82.50; 500-600 lb 69.50-77.00; 600-700 lb 65.50-77.00.

HEIFERS: 82 head. Med./Lge. 1: 300-400 lb 73.50; 400-500 lb 69.50-75.00; 500-600 lb 68-72.00; 600-700 lb 68.50-70.00. Med./Lge. 2: 300-400 lb 72.50-74.00; 400-500 lb 69-73.50; 500-600 lb 67-68.00; 600-700 lb 69.50.

Regular Weekly Auction at Hollins, Oct. 7 — FEEDER CATTLE: 65 head. Price based on in weights.

BULLS: 65 head. Med./Lge. 1: 400-500 lb 78-82.00; 500-600 lb 72.50-79.50. Med./Lge. 2: 400-500 lb 73-79.50; 500-600 lb 69.50-70.00.

Culpeper-Madison Feeder Cattle Sale

Warrenton, Va.
October 9, 2002

Report Supplied By USDA

Culpeper-Madison State Graded Feeder Cattle Sale, Oct. 8 — 463 head. Prices per cwt. Average weights and average prices where applicable in parentheses.

STEERS: Med./Lge. 1: 26 head, 400-500 lb (461 lb) 83.50-84.75 (84.65); 94 head, 500-600 lb (552 lb) 70.25-84.75 (82.00); 95 head, 600-700 lb (542 lb) 76.50-80.00 (79.33); 25 head, 700-800 lb (743 lb) 77.50-78.00 (77.62). Med./Lge. 2: 18 head, 400-500 lb (462 lb) 82.50; 12 head, 500-600 lb (557 lb) 74.75.

HEIFERS: Med./Lge. 1: 19 head, 400-500 lb (461 lb) 62.50-73.00 (70.92); 37 head, 500-600 lb (543 lb) 68.50-74.25 (73.34); 15 head, 600-700 lb (662 lb) 68.50. Med./Lge. 2: 19 head, 400-500 lb (454 lb) 71.00; 11 head, 500-600 lb (531 lb) 63-69.00 (67.61).

Winchester Weekly Feeder Cattle

Richmond, Va.
October 8, 2002

Report Supplied by USDA

WEEKLY AUCTION at Winchester, Oct. 7 — FEEDER CATTLE: 898 head. Prices per cwt., based on in weights.

FEEDER STEERS: 261 head. Med./Lge. 1: 300-400 lb 82-93.00; 400-500 lb 79-92.00; 500-600 lb 73-83.00; 600-700 lb 73-79.00; 700-800 lb 76-79.00; 800-900 lb 73.50-76.00. Med./Lge. 2: 300-400 lb 80-89.00; 400-500 lb 69-83.00; 500-600 lb 65-75.00; 600-700 lb 62-70.50; 700-800 lb 64-74.00.

FEEDER HEIFERS: 334 head. Med./Lge. 1: 200-300 lb 81-86.00; 300-400 lb 69-81.00; 400-500 lb 65-73.50; 500-600 lb 62-70.00; 700-800 lb 64.25-67.00; 800-900 lb 62.50-64.00. Med./Lge. 2: 200-300 lb 79.00; 300-400 lb 62-72.50; 400-500 lb 60-69.50; 500-600 lb 57-66.00; 600-700 lb 60.25-62.00; 700-800 lb 58.75-63.50; 800-900 lb 59.50.

BULLS: 303 head. Med./Lge. 1: 300 lb 99.00; 300-400 lb 92-97.00; 400-500 lb 69-82.00; 500-600 lb 67-80.00; 600-700 lb 61-69.00; 700-900 lb 50-62.00. Med./Lge. 2: 200-300 lb 71-85.00; 300-400 lb 71-84.00; 400-500 lb 60-73.00; 500-600 lb 53-70.00; 600-700 lb 50.50-63.50; 700-900 lb 41-46.25.

Virginia Livestock Auction Summary

Richmond, Va.
October 8, 2002

Report Supplied By USDA

NORTHERN VIRGINIA LIVESTOCK — Front Royal, Marshall, Rockingham, Shenandoah, Staunton Union and Winchester for the week of Sept. 30 thru Oct. 5. All prices per hundred pounds liveweight (CWT.), except where noted.

FEEDER CATTLE: 2295 head.

FEEDER STEERS: Med./Lge. 1: 200-300 lb 93-99.00; 300-400 lb 80-91.00; 400-500 lb 78.50-90.00 few 71.50-82.00; 500-600 lb 67.50-84.00; 600-700 lb 66.75-83.40; 700-800 lb 69-83.75; 800-900 lb 68.50-82.50; 900-1000 lb 65.50-72.50. Med./Lge. 2: 300-400 lb 68-76.00; 400-500 lb 74-84.00 few 62-72.00; 500-600 lb 62.50-80.00; 600-700 lb 65-77.00; 700-800 lb 54.50-62.50; 800-900 lb 62-65.00.

HOLSTEIN STEERS: Med./Lge. 2: 200-300 lb 65.00; 300-500 lb 50-62.00; 500-700 lb 45-47.00.

HEIFERS: Med./Lge. 1: 200-300 lb 82.00; 300-400 lb 66-82.50; 400-500 lb 63-75.25; 500-600 lb 60-73.00; 600-700 lb 65.50-74.00; 700-800 lb 61.50-67.75; 800-900 lb 62.50. Med./Lge. 2: 300-400 lb 70-80.00 few 61-68.00; 400-500 lb 59.50-75.00; 500-600 lb 58-71.00; 600-700 lb 60.50-71.00; 700-800 lb 55.50-58.00.

BULLS: Med./Lge. 1: 200-300 lb 85-104.00; 300-400 lb 78-95.50; 400-500 lb 73-88.00; 500-600 lb 64.25-78.00; 600-700 lb 64.50-70.00; 700-900 lb 58.50-64.50. Med./Lge. 2: 200-300 lb 70-83.00; 300-400 lb 73-81.00; 400-500 lb 67.50-79.00; 500-600 lb 59-69.00; 600-700 lb 53-64.00; 700-800 lb 52.00.

SLAUGHTER CATTLE: 439 head. SLAUGHTER COWS: 403 head. Breaking Utility and Commercial 2-4, 30-38.50; Cutter and Boning Utility 1-3, 29.50-42.00; Canner and Low Cutter 1-2, 22.50-33.00.

SLAUGHTER BULLS: 51 head. Yield Grade 1-2, 900-1300 lb 40.75-51.00, 1300-1600 lb 41-52.25, 1600 lb and over 40.50-48.00.

COWS RETURNED TO FARMS: 27 head. Med./Lge. 1 few 2, 5 yrs to aged 885-1430 lb bred 2-7 months 325-610.00 per head.

BABY CALVES RETURNED TO FARMS: 96 head. Newborn to 4 weeks

1-87.50 per head. Over 100 lbs: 13-120.00 cwt. 15 head. Med./Lge. 1-2: 70-85 lb

SHEEP: 77 head. SLAUGHTER 62.50-68.50, 60-70 lb 63.50-66.50.

LAMBS: 56 head. New Crop: Choice and few Prime 1-2 few 3, 100-125 lbs 65-68.75; SLAUGHTER EWES: 6 head. Choice

93-94 lb 60.50-62.75. FEEDER LAMBS: 2-4, 24.00.

Five-Area Weekly Average Direct Slaughter Cattle

St. Joseph, Mo., October 7, 2002 — USDA Market News Service Sales in Texas/Oklahoma; Kansas; Nebraska; Colorado; and Iowa/Minnesota Feedlots for Week Ending Sunday, October 6, 2002

Confirmed Sales: 147,040; Week Ago: 168,777; Year Ago: 178,571

LIVE BASIS SALES:

SLAUGHTER STEERS	Head Count	Weight Range	Price Range	Avg. Weight	Avg. Price
Over 80% Choice	3,893	900-1600	62 00-64.00	1,364	62 94
65-80% Choice	2,620	1075-1558	62 00-65 00	1,349	63 80
35-65% Choice	32,374	900-1590	62.00-66 00	1,297	64 03
0-35% Choice	840	991-1789	62 00-66 25	1,359	64 11
SLAUGHTER HEIFERS					
Over 80% Choice	4,178	900-1600	62.00-66 00	1,250	63 40
65-80% Choice	9,785	980-1500	62.00-65 00	1,254	63 80
35-65% Choice	31,320	850-1500	62 00-66 00	1,177	64 35
0-35% Choice	907	875-1400	64 00-65 00	1,150	64 66

DRESSED BASIS:

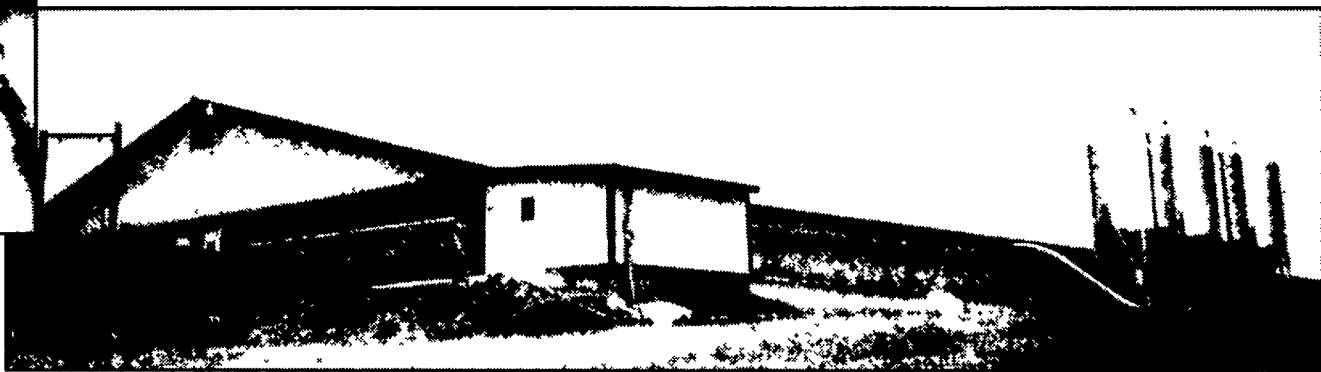
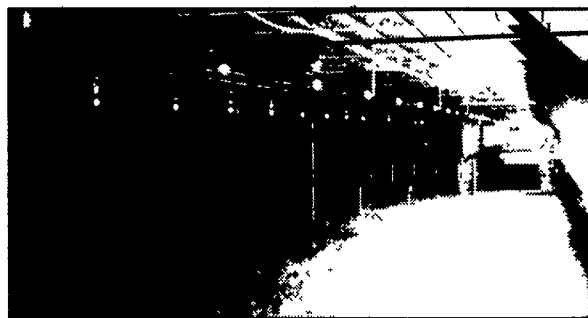
SLAUGHTER STEERS	Head Count	Avg. Weight	Avg. Price
Over 80% Choice	4,531	680-1043	96 00-103 00 881 99 11
65-80% Choice	12,747	632-1073	96 00-102 00 872 99 40
35-65% Choice	13,807	556-1065	96 00-103 00 867 100 09
0-35% Choice	125	656- 956	100 00-100 00 806 100 00
SLAUGHTER HEIFERS			
Over 80% Choice	1,599	536-1003	98 00-102 00 800 99 88
65-80% Choice	10,376	488-1061	98 00-102.00 790 99 96
35-65% Choice	8,812	508-1022	98 00-102 00 773 100 59
0-35% Choice			

Weekly Accumulated Weighted Averages (Beef Breeds):

	Head Count	Avg. Weight	Avg. Price
Live Steer	39,727	1,308.6	63.91
Live Heifer	46,190	1,100.4	64.25
Dressed Steer	31,210	871.1	99.66
Dressed Heifer	20,787	783.4	100.22
Week Ago Weighted Averages:			
Live Steer	45,182	1,305.1	65.43
Live Heifer	52,484	1,184.7	65.75
Dressed Steer	35,913	860.3	102.33
Dressed Heifer	22,076	785.7	102.69
Year Ago Weighted Averages:			
Live Steer	58,443	1,271.2	67.22
Live Heifer	51,183	1,143.5	67.39
Dressed Steer	26,903	846.8	105.94
Dressed Heifer	21,324	746.5	106.74

Call or email us today for a free catalog. Toll free - 1-800-845-3374 • 717-866-7565 • www.farmerboyag.com

Thanks and congratulations to Jay, Lois and Rodney Boll of Rheems, PA



This facility features our latest design:

(4) 550 head pens, each with its individual **WayPig** Sort Scale - This user friendly design improves pig performance and saves labor.

Call us About Contract Finishing on Your Farm

For choosing FARMER BOY AG Systems to construct their new 2200 head "Easy Sort" wean thru Finish Barn

Ask about INSTALLATION & 24 HOUR SERVICE after the sale.

FARMER BOY AG Systems INC
TURN-KEY ANIMAL PRODUCTION SYSTEMS

SAME DAY SHIPPING on in-stock items



1-800-845-3374

410 East Lincoln Ave., Myerstown, PA 17067 • Hours: Mon -Fri - 6:30-5:30 • Sat. - 7:30-noon