



### SPECIALIZED TRAILER

Trailer Bed Goes All The Way Down To Ground Level - Just Drive On Good For Hauling.

Fork Trucks • Skid Loaders • Rollers • Vending Machines  
• Landscape Equipment • Safes • Machinery  
In Stock - 4000 lb Cap., 7000 lb. Cap

**BOBCO TRAILER CO.**

**CALL TOLL FREE • 1-800-618-7433**

## Woodcrest Motors

SPECIALIZING IN TRUCKS & VANS

1200 North Reading Rd., (Rt. 272) Stevens, (Lancaster Co.) PA 17578

**717-336-3130**



**99 FORD RANGER Super Cab 4x4 XLT, AT, A/C, 32,000 Miles, Dk Green**  
**\$12,995**



**99 CHEV. SILVERADO 1500 Ext. Cab, 3-Dr, LT, 4x4, 5.3 V8, AT, A/C, Most Options, 98,000 Miles, Light Gold**  
**\$16,800**



**97 FORD F150 XL, V6, AT, A/C, 8 Ft Bed, 2-Tone Paint, 71,000 Miles**  
**\$8,500**



**99 DODGE DAKOTA SPORT 4x4, Club Cab, V8, AT, A/C, 59,000 Miles, White**  
**\$12,995**



**00 TOYOTA TUNDRA SR5, 4x4, V8, AT, A/C, 55,000 Miles, Maroon**  
**\$14,995**



**99 CHEV. SILVERADO 2500 LS, Ext Cab - 3 Door, 4x4, 6.0 V-8, AT, A/C, Most Options, 8,600 GVW, 60,000 Miles, Red**  
**\$19,995**

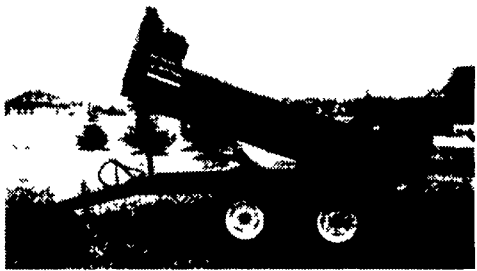
## FARM DUMP TRAILERS

(Direct from the Manufacturer)

### 6-Ton Dump Trailer

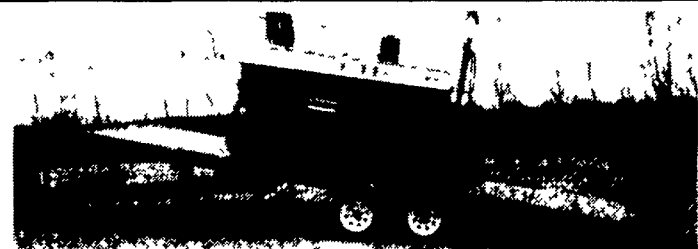
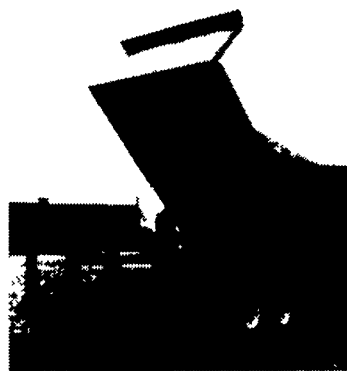
- 10 ft x 7 ft
- Floating Tandem Axle
- 3 ft Front, 3 ft Tailgate & Grain Chute
- 16 in Extendable Sides
- 10 ga Floor & Sides
- 11Lx15 Flotation Tires
- 2-Way 4 in. x 24 in Hydraulic Cylinder

**\$3,200 U.S./delivered**



### 7-Ton Road Dump Trailer

- Fifth wheel or bumper type
- 16 ft x 8 ft deck 3 ft front rack and pockets side & back
- D C hydraulic pump & battery mounted in locking tool box
- 12 ton drop leg jack
- 10 ga floor
- 6x3x3/16 tube main frame
- Sealed beam lighting
- 7000 lbs per axle rating
- Electric brakes on both axle
- 16" tires on white spoked rims
- \$6400 U S delivered in Northeast U S A

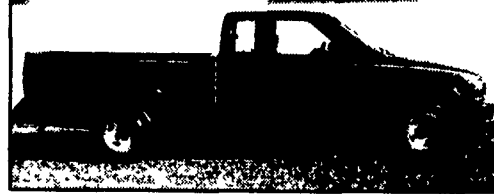


**Tilt & Load Trailer 10,000 to 14,000 lb. Capacity**  
Excellent for loading low riding equipment various lengths available.

- D C Hydraulic pump includes deep cycle marine battery mounted in toolbox
- 7000 lb drop leg jack
- 3" channel cross members every 16" centre
- Pressure treated wood floor
- Sealed beam lighting
- Sand blasted, epoxie primed & painted
- 11 degree load angle on 24 ft trailer

## BERKELMAN'S WELDING

RR 7, AYLMEYER, ONTARIO, CANADA N5H 2R6  
**(519) 765-4230**



### For Sale

1994 Chevrolet S-10 EXT. Cab 4-cylinder, 5-speed, 66,000 miles. Excellent shape, new tires  
**717-336-5542**



**1994 Int. 9400 Day Cab Tractor**  
60 Series Detroit, Fuller 10 Spd, Power Steering, A/C, Aluminum Wheels, 540,417 Miles  
~~\$10,900~~ **\$10,500**  
No Sunday Calls  
**(717) 597-5623**

### Specializing in Quality Built Trailers and Used Trucks



## HUFFMAN TRAILER SALES

FRIENDLY, PROFESSIONAL SERVICE

New Crop Peanut hulls available by self-unloading trailers  
Division of Huffman Litter Service



Rt. 11 NORTH, NEAR EXIT 251 • HARRISONBURG, VA 22802

OFFICE: 540-434-3530 OR 800-825-2545

Featherlite - Hudson - Titan - Pace American - Apache Cattle Feeders

## PINE TREE MOTORS

2407 W. Main St., Ephrata 17522

**717-738-2242**

Over 75 Vehicles To Choose From [www.pinetreemotors.com](http://www.pinetreemotors.com)



**98 DODGE RAM 2500 SLT QUAD CAB, 4x4, 5.9L FI Magnum V8, AT/OD, A/C, PW, PDL, Tilt, Cruise, Dual Airbags, AM/FM Cass & CD, Bed Liner, Towing Package, 8,800 GVWR, Black & Silver, 78,000 Miles \$14,900**



**95 CHEV C2500 CHEYENNE, 5.7L FI V8, 5 Spd, A/C, 2WD, AM/FM Cass, PS, PB, Tilt, Cruise Bed Liner, Trailer Hitch, Blue, 69,000 Miles \$5,900**



**95 DODGE RAM 2500 SLT EXT CAB, 8.0L FI Magnum V10, AT/OD, PW, PDL, 4x4, Airbag, AM/FM Cass, A/C, PS, PB (ABS), Towing Package, Bed Liner, Chrome Wheels, Black, 141,000 Miles \$10,500**



**99 FORD SUPER DUTY DUMP TRUCK, 7.5L FI V8, 5 Spd, A/C, PS, PB, 14,500 GVWR, 8 Ft Gallian Dump, PA Inspected and Serviced, Runs Good, White & Tan, 65,000 Miles \$9,800**



**00 CHEV G3500 EXPRESS VAN, 5.7L FI Vortec V8, AT/OD, Dual A/C & Heat, PW, PDL, Tilt, Cruise, AM/FM Cass, 12 Pass, Cloth Seats, Rubber Floor Mats, Privacy Glass, Side Barn Doors, Charcoal, 90,000 Miles \$12,900**



**97 FORD E350 HI CUBE VAN, 6.8L FI Triton V10, AT/OD, A/C, PS, PB, 15 Ft Unicell Fiberglass Body, Flat Floor, Rear Roll Bar, Cab to Box Passage Door, 10,700 GVWR, White, 72,000 Miles \$11,900**



**99 DODGE CARAVAN, 3.0L FI V6, AT/OD, A/C, Twin Sliding Doors, Dual Airbags, Tilt, Cruise, Pwr Mirrors, AM/FM Cass, Pvrty Glass, 5 Pass, Red, 112,000 Miles \$5,900**



**97 PONTIAC MONTANA EXT, 3.4L FI V6, AT/OD, A/C, PW, PDL, Keyless, Twin Doors, 7 Pass, Tilt, Cruise, Privacy Glass, Pwr Seat, Dual Airbags, AM/FM Cass/CD, Alloy Wheels, Roof Rack, Charcoal, 80,000 Miles \$7,900**



**00 CHEV G3500 EXPRESS LS EXT, 5.7L FI Vortec V8, AT/OD, Dual A/C & Heat, 15 Pass, PW, PDL, Tilt, Cruise, Dual Airbags, AM/FM Cass, Side Barn Doors, Blue, 38,000 Miles \$15,900**

### FINANCING AVAILABLE

CARS		TRUCKS	
00 MERCURY SABLE LS	\$8,500	97 CHEV ASTRO LS AWD	\$9,800
00 CHEV CAVALIER Z24	\$9,900	97 PONTIAC MONTANA EXT	\$7,900
00 CHEV CAVALIER	\$5,800	97 FORD E150 CARGO VAN	\$7,495
98 HONDA CIVIC	\$7,995	97 DODGE CARAVAN CARGO	\$6,900
98 DODGE INTREPID	\$7,995	96 DODGE B3500 SLT VAN	\$9,800
98 CHEVROLET MALIBU	\$6,995	96 DODGE B2500 SLT VAN	\$8,995
98 DODGE STRATUS	\$6,995	95 FORD E250 CARGO VAN	\$5,500
98 DODGE NEON	\$5,995	94 GMC SAFARI SLE EXT.AWD	\$6,995
97 DODGE INTREPID	\$6,995	93 DODGE B150 MARK III CONVERSION VAN	\$4,995
97 EAGLE TALON ESI	\$6,500	92 DODGE CARAVAN SE	\$2,500
96 FORD CONTOUR GL, TEAL	\$4,500		
95 HONDA ACCORD LX	\$8,995		
95 SATURN SL2	\$4,500		
93 MITSUBISHI ECLIPSE GS	\$3,900		
90 HONDA ACCORD LX..	\$4,800		
SPORT UTILITIES		TRUCKS	
99 JEEP GRD CHEROKEE LAREDO	\$15,800	01 DODGE RAM 1500	\$10,900
99 MITS MONTERO SPORT XLS	\$13,900	00 GMC K1500 SLE EXT CAB	\$17,900
98 DODGE DURANGO SLT, NEEDS ENGINE	\$9,800	00 CHEV S10 LS EXT CAB	\$14,800
97 GMC SUBURBAN SLT	\$14,900	00 ISUZU NPR, WHITE	\$10,900
97 GMC YUKON SLT	\$13,900	99 FORD F150 XLT EXT CAB	\$16,900
96 CHEV BLAZER LS	\$7,995	99 FORD F250 SUPER DUTY XLT	\$13,900
95 GMC SUBURBAN SLE	\$12,500	99 MITSUBISHI FUSO FE SP BOX TRUCK	\$14,900
95 JEEP CHEROKEE COUNTY	\$6,500	99 FORD F250 SUPER DUTY	\$12,500
VANS		99 CHEV VENTURE CARGO	\$8,995
00 DODGE B2500 PREM DECOR	\$15,995	99 CHEV S10 LS PICKUP	\$7,995
00 CHEV G3500 EXPRESS LS EXT	\$15,900	98 DODGE RAM 2500 SLT QUAD CAB	\$14,900
00 CHEV G3500 EXPRESS VAN	\$12,900	98 CHEV S10 LS PICKUP	\$6,995
99 FORD WINDSTAR LX	\$10,500	98 DODGE RAM 1500 SLT	\$11,900
99 FORD CLUB WAGON EXT	\$10,900	98 DODGE DAKOTA SPT GTS EXT CAB	\$11,900
99 FORD E250 CARGO VAN	\$9,800	97 GMC C3500 SLT EXT CAB	\$13,500
99 CHEV ASTRO AWD	\$6,995	97 CHEV K1500 SILVERADO EXT CAB	\$11,500
99 DODGE CARAVAN	\$6,900	97 DODGE RAM 2500 SLT	\$12,900
99 DODGE CARAVAN	\$5,900	97 FORD F150 XLT EXT CAB	\$13,500
98 DODGE GRAND CARAVAN SPORT	\$9,800	97 FORD F150, 4X4, 5SPD, GREEN	\$9,900
98 CHEV VENTURE EXT	\$10,900	97 DODGE DAKOTA SLT EXT CAB	\$8,500
98 CHEV ASTRO VAN, WHITE	\$6,995	96 CHEV C2500 SILVERADO EXT CAB	\$10,900
98 FORD WINDSTAR GL	\$8,500	96 DODGE RAM 1500 SLT	\$8,995
98 PLY GRAND VOYAGER SE	\$9,250	96 GMC K1500 SLE EXT CAB	\$12,900
98 CHEV ASTRO CARGO VAN	\$7,995	96 FORD RANGER XLT EXT CAB	\$8,995
98 FORD E150 CLUB WAGON XLT	\$9,800	95 FORD F350 BOX TRK	\$11,900
97 FORD E350 HI CUBE VAN	\$11,900	95 DODGE RAM 2500 SLT EXT CAB	\$10,500
97 OLDS SILOUETTE GLS EXT	\$10,400	95 CHEV K2500 CHEYENNE P/U	\$9,900
		95 CHEV C2500 CHEYENNE	\$8,995
		94 CHEV C3500 CREW CAB STAKE BED	\$8,995
		94 FORD RANGER XLT	\$3,995
		92 ISUZU NPR 14 FT BOX TRK	\$8,995
		90 FORD SUPER DUTY UTILITY BUCKET TRK	\$9,800
		89 FORD SUPER DUTY DUMP TRK	\$9,800