

35

**TRUCKS AND TRAILERS**

'97 Chevy Cheyenne 2500, extended cab, 2WD, 350 auto, PS, PB, cruise, tilt, air, AM-FM Cass., towing package, 8,600 GVW, 63,000 one owner miles, \$11,900. 717-733-2873

'94 Ford XLT F250, 4x4, super cab, 351, 5 spd, PS, PB, PW, PDL, cruise, tilt, air, AM/FM cass., 8800 GVW, 70,000 miles, dark green, \$11,500. 717-733-2873

'97 Chevy Cheyenne 2500 w/8' Reading utility body, 350 auto, PS, PB, air, 8600 GVW, 80,000 one owner miles, new radials, red, \$12,500. 717-733-2873

'96 Ford XLT Ranger short bed, 4 cyl., 5 spd, PS, PB, air, AM-FM cassette, new radials, 69,000 miles, black, \$4,275. 717-733-2873

'97 Chevy Express LS, 8 pass., 350 auto, PS, PB, PW, PDL, cruise, tilt, dual air, AM-FM Cass/CD, 62,000 miles, \$11,995. 717-733-2873

'93 Dodge LE 250 club cab pu, 2WD, 360 auto, PS, PB, PW, PDL, cruise, tilt, air, 410 ratio, towing package, 59,000 one owner miles, blue & silver, excellent condition, \$8,975. 717-733-2873

'98 Chevy Cheyenne 1500 4x4, 305 auto, PS, PB, cruise, tilt, air, 37,000 one owner miles, dark green, excellent condition, \$13,900. 717-733-2873

'00 Dodge 3500, 15 pass., 360 auto, PS, PB, PW, PDL, cruise, tilt, dual air, privacy glass, 52,000 miles, dark green, excellent condition, \$13,500. 717-733-2873

'97 Freightliner FL50, auto, air, AM/FM, 145,000 mi, \$14,500. 570-847-1001

insulated Morgan 18' truck body w/reefer unit, elect. standby, exc. cond., rear swinging doors, \$3,995. 717-442-9208

27' Trailco Alum. dump trailer, avg. cond. \$3,500. 717-438-3205.

Stock Trailer, 1988, Monarch, 10'L 6'W 7'H, \$900. 717-684-5409.

1989 GMC SLE, 4x4, black & maroon ex cond. 717-426-3135

'78 Chevy C60, 19ft dump bed w/grain sides, 22,000 GVW, approx 1000 mi on rebuilt 350 eng, \$3000. 717-365-3998

'89 Gooseneck stock trailer, \$1600 obo. 301-447-3991

Bucket truck, 1986 Ford 1 ton, w/30' Teista lift, 110 & 220V generator, V8 auto, runs & works good, \$3500. 717/377-8865

'68 Autocar truck tractor, 250 Cummins eng, 15 spd trans, tandem axle. 610-863-8553

2 horse trailer, 1977 Shoop, new paint, 7' H, new inspection, good shape, \$1,000. 610-404-1601.

Dodge Dakota, 90, 4x4, 5spd, new insp, runs exc., 155K, \$2900. 215-860-6477.

Old tilted construction trailer, 17'x6'6", deck between tires, 1st \$700. Backhoe/tractor tires, used, 16.9x24, \$35/ea. 215-536-9239.

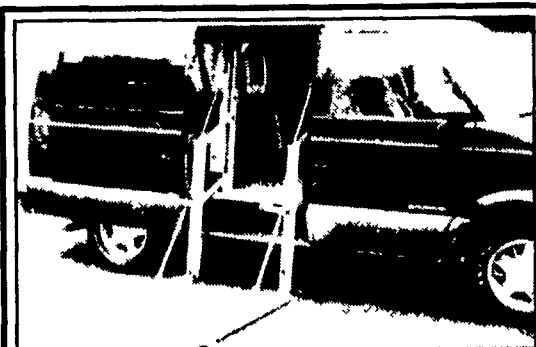
'95 Dodge dually, 4x4, Cummins dsl, P/U that dumps, hi miles, runs & looks good, \$9,900. 215-536-9239.

2001 Ford 350 crew cab, dsl, 6 spd dually, 4x4, Lariat, 60K mi, Island blue 2-tone, \$29,500. 1985 GMC P/U, 3/4 T, 350, auto, 2WD, metal camper shell utility box, will trade for a 4 Wheeler. 540-554-9009.

2000 GMC Sonoma high rider, extended cab, 32,000 mi, black, w/hitch, extremely nice, \$15,900 obo. 717-653-5194

'99 GMC Suburban 2500, 4x4, Pewter, loaded, w/hitch, 1-owner, v.nice, 59,000 mi, \$23,900. 717-653-5194

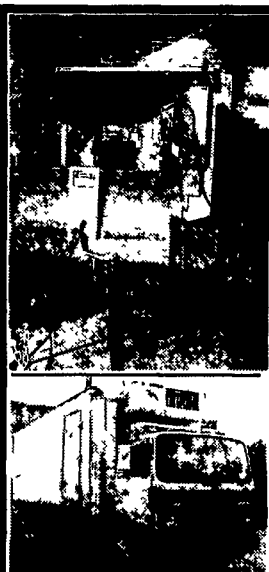
'95 E350 cube van, 14ft, 7.3L, auto, AC, 178k, \$7500. 717-529-1208



**Ricon Wheel Chair Lift**  
Fits Chev. Astro Van, Like New  
**\$975**

**A&J AUTO SALES**

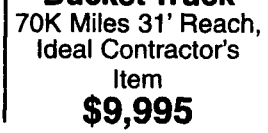
798 E. Main St., Rt. 322 East, Ephrata, PA., 17522  
717-733-2873



**Asphalt Milling Machine**  
48" Drum, 88 hrs. with water  
**\$41,500**



**1990 Mack w/Reefer - Carrier Starbird**  
**\$5,500**



**1991 GMC Bucket Truck**  
70K Miles 31' Reach, Ideal Contractor's Item  
**\$9,995**

**HD Motors Inc. (570) 622-5814**



**1989 Peterbilt 378, NTC Cummins 350, 8LL, 12,000 F.A., 38,000 R.A., 4:44 Ratio, 11 x 22.5 radials. PTO & Wet Line Good Older Tractors . . . \$13,000 EA.**

**FLAT BEDS**

(8) 1986 Dorsey 42' Flatbeds Sold As Is . . . Call for Details. \$2500 EA.

**CALL DAVE YERGER 717/733-6556**

**Lester R. Summers Inc.**

**NO AD SOLICITORS PLEASE!**

**CROP PRODUCTION SERVICES AMENIA, NY**

Call Adam or Stan @ 845 • 373 • 9913

**88 GMC TOPKICK**  
1280 stainless steel tank, 60' boom, 440 Raven w/radar, 3X2 pump. 40 gal stainless steel foam tank, 3208 Turbo with 10 speed. Front tires 42x25-20 75%, Rears 48-31-20 20%.

**85 GMC TOPKICK**  
L2020 box. Dickey-John land manager controller. 3208 w/10 speed. Front tires 48x25-20 80%. Rears 66-43-25 40%.

**89 INTERNATIONAL S2300 Dry Spreader w/Chandler Box. L10 Cummins 9 speed. Front tire super singles 90% Right 48x31-20 50% Dickey John CMS 100 controller w/radar.**

**88 MACK ECONODYNE R688ST 10 wheel, Mack 12 speed, Mack 350 new leader Dry lime Auger box.**

**84 HILL DRY LIME NURSE TANKER, 10 wheel, pintle hitch trailer, hydraulic auger discharge.**

**86 MACK ECONODYNE R688ST 10 wheel, 10 speed, Mack 350 Dry Lime Auger box.**

**90 HILL DRY LIME NURSE TANKER, 10 wheel pintle hitch trailer, hydraulic auger discharge.**

35

**TRUCKS AND TRAILERS**

7511 Allentown Blvd.  
Harrisburg, PA 17112

**75 TRUCKS IN STOCK**

**AFFORDABLE CARS AND TRUCKS, INC.**

**"You Gotta Believe!!"**

717-652-1925  
FAX 717-652-4888  
www.autotrader.com/view/affordable car and truck

New Exit #72A, Rt. 81 N; Rt. 22 East of Harrisburg; 3 Miles North of Hershey Park

**97 FORD F350 XLT 4x4**

Crew Cab Longbed, 7 3 Powerstroke Dsl, AT, AC, PW, PDL, Stereo New Rubber & Full Service like New! 140K  
**\$17,995**



**94 FORD F250 XLT**  
4x4 Ext Cab Long Bed, 7 3 International Turbo Dsl, AT, PS, PB, AC, Tilt, Cruise, Tow Setup & More, 99,000 Mi, Very Well Cared for Truck! **\$13,995**



**90 CHEV. SCOTTSDALE 4X4**  
350 V8, AC, 2 Tone Blue, AT, Cloth, Real Clean Truck, 100,000 Mi  
**\$4,500**



**95 DODGE RAM 1500 4X4**  
Laramie SLT, V8, AT, AC, PW, PDL, Tilt, Cruise, Alloys, Stereo, 2 Tone Paint, Good Clean Truck, 1-Owner, 160K **\$6,995**



**95 FORD F350 XLT 4X4**  
1-Ton Crew Cab, 140,000 Mi, 460 Big Block, AT, AC, PW, PDL, Stereo, Tilt, Cruise, Tow Package, Alloys, Very Straight & Clean Truck, Priced Right **\$10,500**



**96 DODGE RAM 2500**  
4x4 Laramie SLT, Cummins Turbo Dsl, AT, AC, PW, PDL, Stereo, Tilt, Cruise, 2 Tone Black/Red, Only 130,000 Mi, Extra Clean 1-Owner Trade In! **\$16,500**



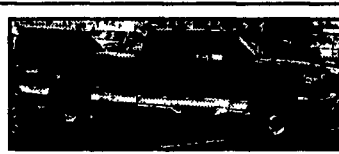
**92 DODGE RAM 2500 LE**  
4x4 Extended Cab Long Bed Cummins Turbo Dsl., 5-Speed, AC, PW, PDL, Stereo, Tilt, Cruise, Only 120K, Totally Flawless in Every Way, Ready to Work! Market Value Prohibits Financing on This Truck **\$14,500 Cash**



**99 FORD F350 SUPER DUTY XL 4X4**  
7 3 Powerstroke, 6 Speed, AC, Stereo, Only 80,000 Miles, Very Clean 1-Owner, Superb Shape, Where You Gonna Find These?? **\$18,500**



**99 FORD F250 XLT**  
4x4 Super Duty, Quad Cab, Longbed, PA 1-Owner, 7.3 Powerstroke Dsl, AT, AC, PW, PDL, Tilt, Cruise, Stereo & More, Mint Condition, Dark Blue, New Radials 10 Ply., Must See, 150,000 Highway Miles. **\$18,995**



**97 FORD F250 XLT**  
4x4 Ext. Cab Longbed 7 3 Powerstroke Dsl AT, AC, PW, PDL, Stereo, P Seat Cruise, Tilt, and More PA 1-Owner Showman Condition w/New 10 Ply Radials-Ready To Tow 140K **\$17,995**



**92 Dodge 2500 4x4**  
Cummins Turbo Dsl. with What Everyone Wants The Indestructible 5-Speed Trans!! Extremely Clean Both In & Out, No Rust, Only Highway Driven, Look Like 50,000 Mi., Has 200,000 On It! Base No Extras, No AC **\$7,495**



**96 DODGE RAM 2500 4X4 LARAMIE SLT**  
Ext. Longbed, 360 V8, AT, AC, PW, PDL, Stereo, Cruise, Tilt, 120,000 Mi., Good Clean 1-Owner Truck, Must See! **\$10,995**



**97 DODGE RAM 3500 4X4**  
Laramie SLT, Dually Ext Longbed, 1-Ton Cummins Dsl, 5-Spd, AC, PW, PDL, Stereo, Cruise, Tilt & More, 140,000 Mi., Extra Clean With New Tires! Must See! **\$17,995**



**89 GMC 2500 4x4 PLOW TRUCK**  
AT, New 350 Motor, Myers Plow With Full Angle. This Is Our Truck Owned For 5 Years, Very Basic, No Air, But Snow Is Coming, 100,000 Miles **\$5,495**



**88 CHEV. 1500 Silverado**  
4x4 Ext. Long Bed, All Options, V8 350, AT, AC, PW, PDL, Real Clean Body & Interior, 100,000 Mi. & Real Well Cared For! **\$6,495**



**99 GMC SIERRA 4X4 EXT. SHORTBOX** - 5.3 V8, AT, AC, 3rd Door, PW, PDL, Stereo, Delco CD, Absolutely New Condition, All Black & Beautiful, 80k - **\$15,995**



**97 DODGE RAM 4X4 2500 SLT LARAMIE**  
Ext., Longbed, Cummins Turbo Dsl, Every Option, 5 Speed, 2-Tone Black/Gray, Only 81K, Showroom Condition **\$19,995**



**96 FORD F350 XL 4x4**  
7.3 Powerstroke Dsl, AT, PS, PB, Cloth Seat, Only 60,000 Actual Miles, Superb Condition, No Air **\$14,995** With Air **\$15,995**



**94 FORD F350 XLT 4x4**  
5.8, V8, AT, AC, PW, Pdl, Stereo, all Black, Very Clean Truck 9000 GVW, Straight axle, Good Heavy Truck in Mint Condition (can remove stripe) 100,000 mi **\$10,500**



**90 CHEV. 3500 4X4**  
1-Ton Scottsdale, 9000 GVW 454 V8, AT, AC, PS, PB, Stereo & Cloth Interior, Showroom Shape, I Mean It Looks & Drives Like New, 100,000 Mi. **\$6,495**



**96 CHEV. Suburban SLT 4X4 6.5 Turbo**  
Dsl., BARN DOORS, 3RD Seat, Dual AC & Heat & Every Option. Leather, New Service & Inspection, Perfect Condition, With 1yr. Warr. 130K **\$14,500**



**94 FORD F150 XL**  
Ext. Long Bed, 6 Cylinder, 5-Speed, Only 80,000 Mi., Runs Perfect, Real Good Truck, Just Traded In **\$2,995**



**95 FORD F250 XLT**  
4x4 Longbed, 460 V8, 5-Sp, AC, Cloth Seat, Stereo, 8600 GVW, Extremely Clean Truck, Guaranteed To Impress You When You See & Drive It! 90,000 Miles. **\$8,995**