

**35 TRUCKS AND TRAILERS**

Storage trailers, 48x102, insulated, \$2250. 717-940-5257

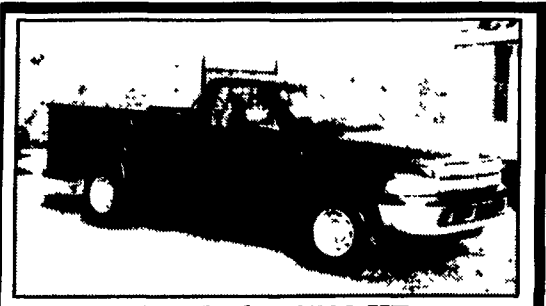
1980 Chevy C-30 dump truck, 350, 4 spd, 10' Thiel bed, good inspection, good shape, \$3,500. 717-776-4999.

Cat 951-C track loader, fully rebilt eng, less than 400 hrs, good cond, bkt needs teeth. 1975 Mack dump truck, 10 wheeler, road worthy w/good tires. '88 Int'l 10 ton equipment trailer, dual wheels, & dual axle. \$25,000/all or will sell separately. 717-949-3934

1961 Diamond T Dump, 33,000 GVW, good cond. 1969, 3,400 GVW Diamond Rio, cab & chassis, 48,000 miles. Call 610-929-3777.

**1987 Dodge truck,** 12' flatbed, 4' removable sides, lift gate. **\$3500 OBO.** 717-367-6496

**2000 Raven Dump** Spread Axle Stainless Alum Wheels, 40Lx102Wx72H **\$37,500** 717-776-7806



**2001 Dodge 2500 HD**  
3/4 - Ton, Cummins Turbo Diesel, Auto, PS, PB, Air, AM/FM Cass, 8,800 GVW, with 8 Ft Knapherde Utility Body with Flip Up Tops, 21,000 Miles with Bal of Factory Warranty, Like New, Dark Green **\$18,500.**

**A&J AUTO SALES**  
798 E. Main St., Rt. 322 East, Ephrata, PA 17522  
• 717-733-2873

**LEED TRUCK CENTER**

402 South Chiques Rd Salunga Exit, Route 283 **717-898-1200**



**1986 GMC VANDURA** 3500, V8, A/T, P/S, P/B, 8600 GVW with Scott Air Reefer Unit & Van Pkg, New Comp, & 134A Freon, Insp, Clean **Reduced to \$3,000**



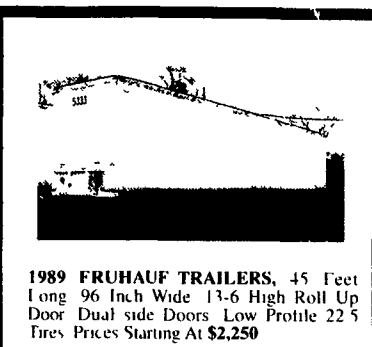
**1993 FORD F450 SUPER DUTY,** 7.3 Liter Diesel, 5 Spd, P/S, P/B, 15,000 GVW, Dual Wheel, 12' Platform Dump, New Paint, Very Clean **Reduced to \$8,000**



**1983 UTILITY 45' REEFER VAN TRAILER,** Tandem Axle Slide, Tk Diesel with Electric Staby, Insp, Very Clean **Only \$3,500**



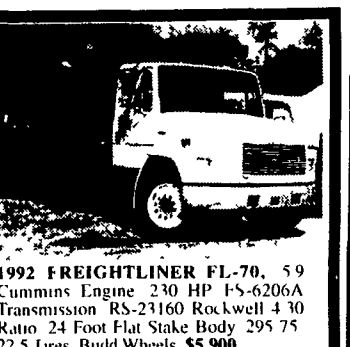
**1988 IHC S1954, DT** 466, 210 HP, 5&2 Spd, P/S, A/B, 32,060 GVW, 16' C&C, DD Frame, 120' CA, Very Clean, Low Low Miles **CALL FOR DETAILS**



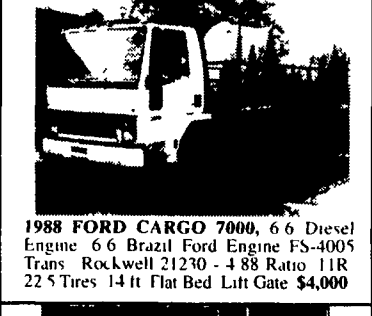
**1989 FRUHAUF TRAILERS,** 45 Feet Long 96 Inch Wide 13-6 High Roll Up Door Dual side Doors Low Profile 22 5 Tires Prices Starting At **\$2,250**



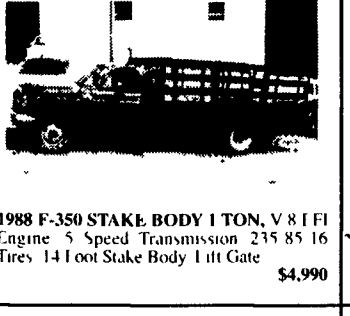
**1988 FORD L-8000,** 7.8 L For D Brazil Engine 240 HP Automatic Transmission 23,000 Pound Eaton Rear Detroit Locker 38,000 GVW Steel Dump Body 22 5 Rubber Stock #1438 **\$7,900**



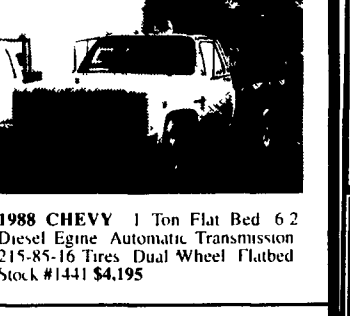
**1992 FREIGHTLINER FL-70,** 5.9 Cummins Engine 230 HP I-5-6206A Transmission RS-23160 Rockwell 4.30 Ratio 24 Foot Flat Stake Body 295 75 22 5 Tires Budd Wheels **\$5,900**



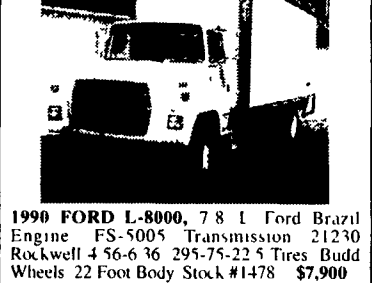
**1988 FORD CARGO 7000,** 6.6 Diesel Engine 6.6 Brazil Ford Engine FS-4005 Trans Rockwell 21230 - 4.88 Ratio 11R 22 5 Tires 14 ft Flat Bed Lift Gate **\$4,000**



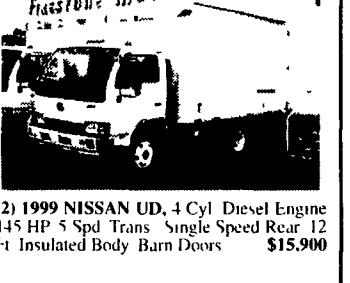
**1988 F-350 STAKE BODY 1 TON,** V8 I FI Engine 5 Speed Transmission 235 85 16 Tires 14 Foot Stake Body Lift Gate **\$4,990**



**1988 CHEVY 1 Ton Flat Bed 6.2 Diesel Engine Automatic Transmission 215-85-16 Tires Dual Wheel Flatbed Stock #1441 **\$4,195****



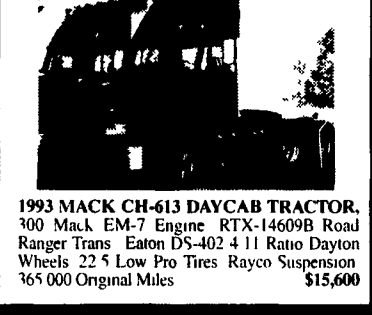
**1990 FORD L-8000,** 7.8 L Ford Brazil Engine FS-5005 Transmission 21230 Rockwell 4.56-6.36 295-75-22 5 Tires Budd Wheels 22 Foot Body Stock #1478 **\$7,900**



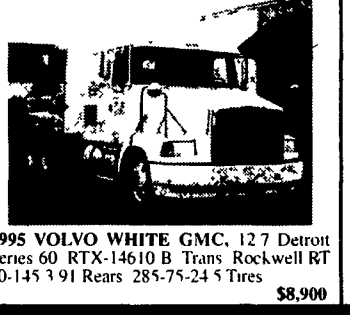
**(2) 1999 NISSAN UD,** 4 Cyl Diesel Engine 145 HP 5 Spd Trans Single Speed Rear 12 Ft Insulated Body Barn Doors **\$15,900**



**1995 INTERNATIONAL 4700 (NON CDI),** Roll Back 44 I IHC Engine 5 Speed Trans Single Speed Rear 19.5 Tires 19.2 Foot Chevron Bed Alum Light Bar Tool Boxes **\$19,900**



**1993 MACK CH-613 DAYCAB TRACTOR,** 300 Mack EM-7 Engine RTX-14609B Road Ranger Trans Eaton DS-402 4.11 Ratio Dayton Wheels 22 5 Low Pro Tires Rayco Suspension 365,000 Original Miles **\$15,600**



**1995 VOLVO WHITE GMC,** 12.7 Detroit Series 60 RTX-14610 B Trans Rockwell RT 40-145 3.91 Rears 285-75-24 5 Tires **\$8,900**



**MECHANICS SPECIAL 1994 FREIGHTLINER FLD-112,** 3176 Cat Engine RTX-12609 B Transmission DS-404 3.90 Ratio Rears 295-75-22 5 Tires Pilot Wheels Light Fiberglass Damage Price **\$5,000 As Is**

**FIRESTONE MOTORS, INC.**  
330 S. THIRD ST. • LEMOYNE, PA • (717) 763-7721 • TOLL FREE 1-888-668-6778  
www.firestonemotors.com

**OVER 120 TRUCKS**

**Bobby Gerhart's Truck World**

2400 E. Cumberland St. Rt. 422 Lebanon, PA 17042 **717-273-7995**

Mon. - Fri. 9-8, Sat. 9-3

Preferred Warranties Available on Most Trucks

**2000 CHEV. 3500 CREW CAB 4X4**  
AT. 350 V8. A/C, Cass, 44,000 Miles, Ladder Rack White, #C641

**95 DODGE RAM 2500 4x4 SLT**  
Cummins Turbo Diesel, AT, A/C, Most Options, 139,000 Miles, Dk. Green

**99 GMC SUBURBAN 2500 4x4 SLE**  
AT, A/C, Most Options, 44,000 Miles, White #G237

**99 FORD F250 QUAD CAB 4X4**  
Power Stroke Diesel XLT, AT, A/C, CD Player Most Options, 51,000 Miles Blue

**2000 FORD F350 CREW CAB DUALLY**  
w/9 Ft. Stake Body 6 Spd 2WD Power Stroke Diesel A/C 59,000 Miles Maroon #F2010

**2000 FORD F450 CREW CAB 4x4**  
w/Royal Body, AT, Power Stroke Diesel, Leather, Lariat, 43,000 Miles, White

**1999 FORD F350 4X4 - 9 FT. STAKE DUMP**  
Power Stroke Diesel, 5 Spd., XLT, A/C, C. T. PL. PW, Red, 75,000 Miles, #2007

**97 FORD F350 4X4 L-PAK CONTRACTOR DUMP**  
- AT, Power Stroke Diesel, 82,000 Miles, Green, #F2039

**95 CHEV. 3500 EXT. CAB DUALLY**  
2WD, AT, 6.5 Turbo Diesel, A/C, Most Options 84,000 Miles, White, #C625 (5 Ext. Cab Duallys in Stock)

**98 CHEV. 2500 EXT. CAB 4X4**  
Short Bed, 6.5 Turbo Diesel, AT, A/C, PL, 48,000 Miles, White, #C567

**90 CHEV. C30 STEP VAN**  
AT 454 V8 PB, PS, Roof Air, Generator 105,000 Miles Black/White #C643

**97 GMC TOPKICK 6500**  
CAT Diesel Allison Automatic, 26,900 GVW, Rear Sofa Bed and Sleeper Conversion, Both Hitches Ready to Tow COME & GET IT!! #G235

**94 GMC 3500 CREW CAB 4X4**  
454 V8 AT A/C, 57,000 Miles Red & Black, #G227 **\$7,995**

**90 FORD F350 CREW CAB DUALLY**  
AT 460 V8 XLT over 100,000 Miles A/C Most Options, Looks & Runs Good Maroon, #F2021

**99 GMC 3500 CREW CAB DUALLY 9 FT. FLATBED** w/Both Hitches 454 AT PS PB A/C 29,000 Miles White Perfect Condition! #G233

**99 FORD F350 9 FT. FLATBED**  
w/Gooseneck, 5-spd Triton V-10 XL Trim, A/C, 68,000 Miles, Dk. Green, #F2022

**97 FORD F250 HD 4X4**  
351 V8, AT, A/C, Most Options 98,000 Miles, Black

**2000 GMC 3500 9 FT. FLAT BED**  
454 V8 5 Spd A/C AM/FM 47,000 Miles Black

**98 FORD E350 SUPER DUTY 16 FT. CUBE VAN** Power Stroke Diesel, AT, AM/FM/Cass 14,000 GVW, 55,000 Miles, Black, #F1095

**97 FORD F-250 4X4**  
Utility Body Power Stroke Diesel AT, A/C, 98,000 Mi, Blue

**97 FORD F SUPER DUTY RAMP TRUCK**  
Power Stroke Diesel AT A/C PW PL Black

**95 FORD F350 CONTRACTOR DUMP**  
XLT 5-Spd A/C V8 C PW 77,000 Miles Red #F2004

**99 CHEV. 3500 14 FT. CUBE VAN**  
AT A/C 350 V8 67,000 Miles White #C642