

# PRIVATE COLLECTION AT AUCTION

ANTIQUE TOYS & ELECTRIC TRAINS

RARE HIT & MISS GAS ENGINES

ANTIQUE AND VINTAGE BICYCLES

AUTOMOBILIA, TOOLS & COLLECTIBLES

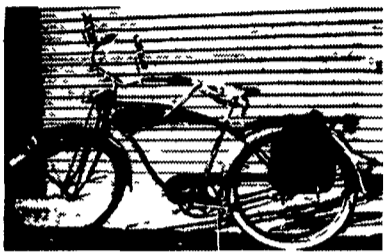
NATIONAL AMERICAN 1933-34 FORD V8 PEDAL DUMP TRUCK

10 A.M. SATURDAY, SEPTEMBER 28, 2002

RIDGE FIRE COMPANY PAVILION

ALONG RT. 23, BETWEEN PHOENIXVILLE, PA & RT. 100

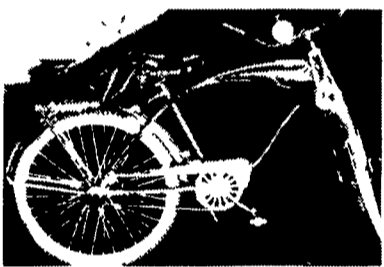
SELLING EXCLUSIVELY FOR RON SNYDER OF PERKASIE, PA



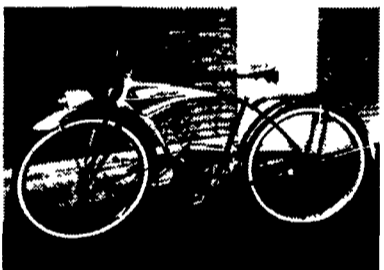
Auction begins with 250 toys 1920 to 1990, including cast iron, tin litho wind-ups by Arcade, A.C. Williams, Chein, Wyandotte, Marx, etc. Bing Model "T" Ford Touring, Kenton Jaeger Mixer, Hopalong & Roy Rogers collectibles. ERTL John Deere Tractors, ERTL Texaco trucks 2 thru 10, Hess trucks, & NASCAR collectibles.



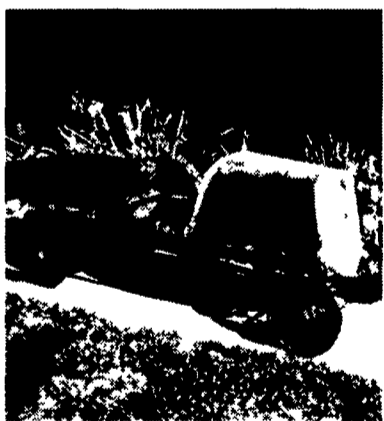
Gas engines and bicycles to be sold at noon: Christensen Engineering 3-HP Type C Hit & Miss Engine in running condition, on truck. Bulls Eye 2-HP Hit & Miss engine, on truck (mfg. by Jacobsen). Monarch 1-3/4 HP Hit & Miss engine, on truck. Coldwell lawn mower engine w/radiator. Assorted older Briggs & Stratton engines, 1954 DiCiero spec. Briggs powered racer, cast aluminum John Deere pedal tractor. Antique Meadows wood tub wringer washer. Schwinn Black Phantom w/horn & saddlebags. Schwinn boy's Streamliner w/tank horn. Red, white & blue boy's Shelby Flying Cloud. Aerolite Super Deluxe boy's Roll Fast. Schwinn girl's pink & white w/access. Also in the blue room: Gene Autry bike w/horse head, horseshoe reflector and reflector jeweled fenders. Winchester boy's bike. Very early all wood "Boneshaker" bike.



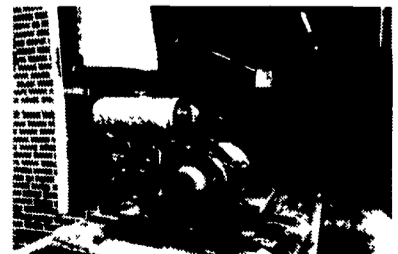
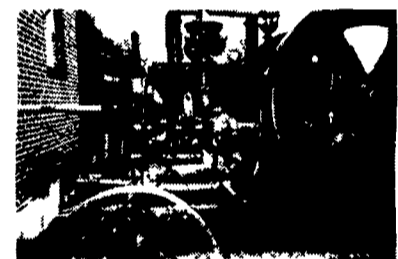
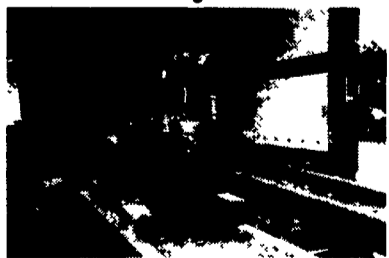
Also, various and sundry hand & power tools, including Delta drill press, small wood lathe, toy steam engines and one very nice 50 lb. stationary steam engine, antique lawn mower, all kinds of equipment, such as 32-volt Delco Lite plant, pumps & compressors, fans, old spark plugs, pitcher pump, old sleds, welding outfit, early Briggs & Stratton twin flywheel engine on truck, box lots of bits & pieces. Home built, heavy duty 2-wheel utility trailer.



After all the above, we will sell the electric trains from Ron's collection (trains will also be sold in the Blue Room, starting at 10:00 A.M.), including Lionel OO trains, Lionel 226E, 442 Diner, 249E L&T, 2343 Santa Fe, 681 PRR Turbine, assorted American Flyer "S" Gage trains, Marx trains, MPC Blue Comet, Williams TCA GG1, Plasticville and HO trains.



**10% Buyer's Premium Will Be Applied.**



**TED MAURER (AU-000593-L)**  
**SUCCESSFUL AUCTION MANAGEMENT**  
 1003 BROOKWOOD DRIVE  
 POTTSTOWN, PA 19464

PHONES: 610-323-1573 OR 610-367-5024

ALSO FRIDAYS & SATURDAYS AT 610-495-5504

VISIT OUR WEBSITE AT [WWW.MAURERAIL.COM](http://WWW.MAURERAIL.COM) TO VIEW/PRINT THE LIST.