

# Lancaster Farming *Antiques Center*



This wagon is an original built by A.M. Grove during the early 1900s. Mike Shay guides the wagon while his brother Tom Shay pushes it.

## Visit Village 'Preserved In Time' To Track Railroads' Role In American Heritage

**LOU ANN GOOD**  
*Food And Family  
Features Editor*

**MUDDY CREEK FORKS** (York Co.) — "I want to preserve a part of our past that few people see. I feel it is important for our generation to preserve history for children," said Dolores Krick, president of Ma and Pa Railroad Preservation Society.

Ma and Pa is the abbreviation for the Maryland and Pennsylvania Railroad that ran from York to Baltimore and stopped in Muddy Creek Forks as often as eight times a day. The railroad brought goods and supplies to the communities through which it passed and took milk and produce to the larger cities.

In Muddy Creek Forks, farmers bought wheat to the Roller Mill to be ground into flour or to

the grain elevator to be stored or loaded on railroad cars. Some produce was processed in the local cannery and shipped out by rail.

Railroads changed the landscape of America. Almost overnight, villages sprang up at stations stops that became the hub of activity for surrounding communities. The railroads provided transportation for people, freight, and mail. Railroads provided employment and a brighter future for many financially struggling families.

In the days before WalMart and other superstores, residents in the rural villages could receive store items from York or Baltimore within a day by rail, according to Krick.

But the popularity of rail transportation dwindled when

cars, trucks, and later air travel offered more convenience and faster travel. Many railroad towns became ghost towns almost overnight during the transition to air travel.

Muddy Creek Forks offers a window of life as it was during the railroads' heyday.

"The preservation and renovation of the buildings and the improvement of the tracks have made it possible for people to learn about rural York County in 1915," Krick said of the historical efforts that she and others who recognize the historical significance railroads play in America's heritage.

On Saturday Sept. 28, Muddy Creek Forks Village celebrates Railroad Heritage Day from 10 a.m. - 5 p.m.

Tours of the 1894 wooden passenger car and caboose 2007 will be offered. Motorcar rides will depart from the station platform every 40 minutes.

Visitors can tour the town, which was once a bustling community with a general store, railroad station, post office, roller mill and grain elevator.

The original 1900's post office housed inside the general store is still intact. Even the unclaimed mail remains in the postal boxes.

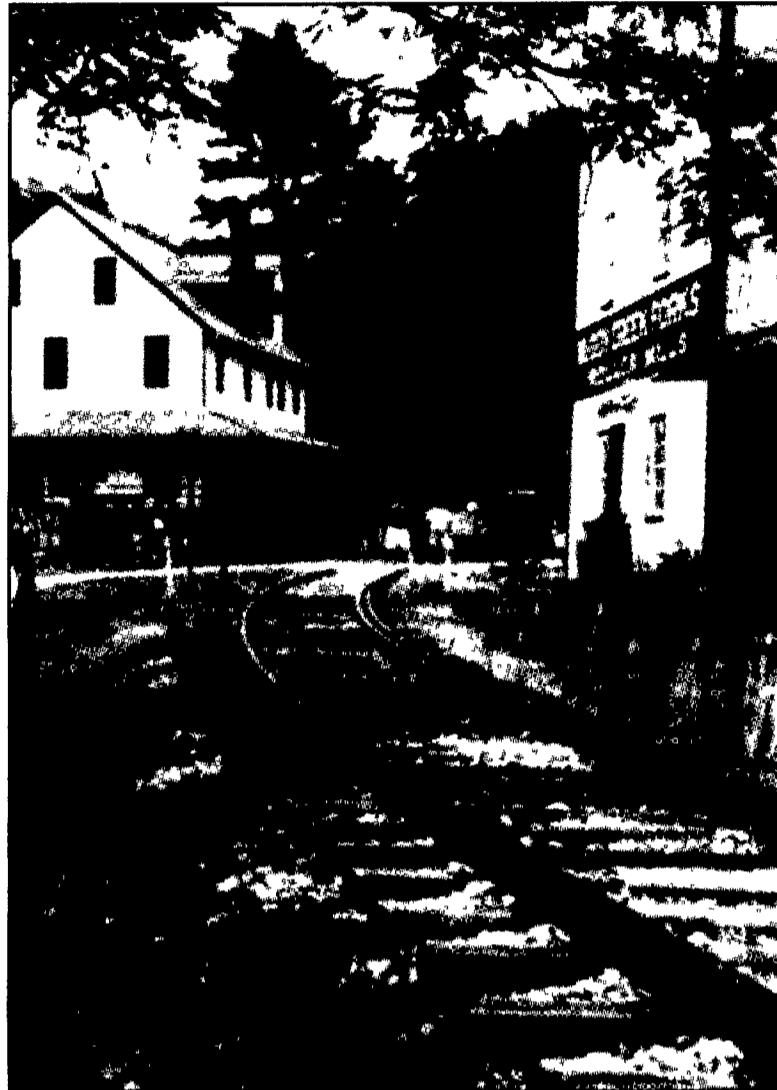
Volunteers dressed in period costumes will provide a glimpse into life as it was in 1900 — even the sending telegraph messages.

Slide shows, "A Journey in Time," and "The Ma & Pa — Debunking the Myths," will be narrated on the hour in the store.

Unique artifacts from the railroad station and from locomotives and historical photos will be on display. Some artifacts and photographs will be available for bid at the silent auction to be conducted on the second floor of the store.

The event promises fun for the whole family. In addition to the many historical-related activities, also available are special children's activities with T.J. the clown, and food available for purchase.

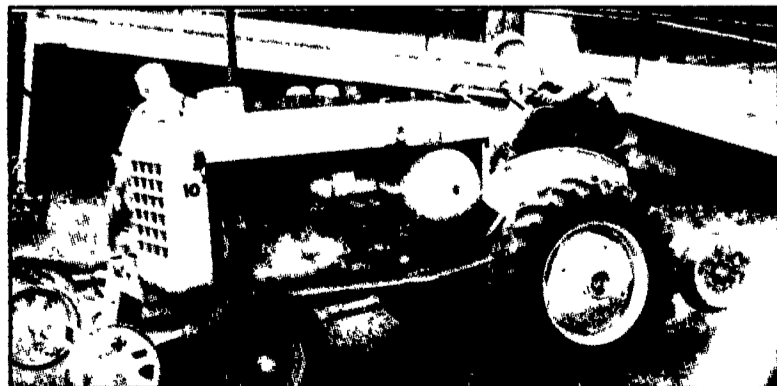
Directions to Muddy Creek



Muddy Creek Forks offers free tours of its restored general store and historical roller mill and grain elevator.



The original post office inside the general store is still intact. Unclaimed mail from when the post office last operated is still in the boxes.



This isn't a field tractor but a shramm used to replace railroad ties.

Forks from Interstate 83: Take exit to State Route 851 at Shrewsbury. Follow Rt. 851 east through Stewartstown to New Park. Watch signs carefully. In New Park when Rt. 851 bears right toward Delta, take the left fork to New Park Road and follow about six miles through Gatchellville to Muddy Creek Forks.

(Driving time from I83 is about 30 minutes).

For more information, check out the Website [www.mapaps.org](http://www.mapaps.org) for a virtual tour of the railroad town or call (717) 927-6023.

On Sept. 28 and again on Oct. 13 and Oct. 20, admission is free to all exhibits. Train rides are \$4 for adults, \$2 for children.



Volunteers dress in period costumes during the annual Railroad Heritage Day.