

Binkley & Hurst Bros. Inc.
For Quality
Keenan Mixers

We're Ready to Join Your Production Team!

If you've been thinking of Keenan Mixers as over priced ~~now~~ is the time to reconsider! ~~Best Keenan Mixers are Priced Lower Today than 10 years ago~~



KEENAN KLASSICK FEED PROCESSORS

Your next step toward improved herd health and productivity.

Ask about the results the Keenan owners are experiencing!

- Six models available - from 280 to 700 cubic ft. capacity
- PTO pull-type or stationary units available
- One-year, no-cost consultants service available
- Solid, simple construction, 1/4" tank thickness/6 bearings and 2 chains
- Unique & exclusive reel and auger design provides gentle, yet thorough mixing.

Binkley & Hurst Bros. Inc.,
Your KEENAN Dealer

YOUR SOURCE FOR TMR FEED MIXERS

New or Used - and Demonstrators at Discount Prices

WE HAVE A MIXER FOR YOUR FARM!



OSWALT 250
250 cu. ft. Poly Liner, Scale, Discharge Conveyor (UM 4991)
\$6,950



Jaylor TMR Mixer Model 2350
350 Cu. Ft., Lot of Mixer for the Money!
\$18,500



OSWALT 345
325 cu. ft., 4 Augers, Scale, Discharge Conveyor (UM 5107)
\$4,995



LUCKNOW 285
285 cu. ft. Cap, Scale, (UM 5118)
\$3,995 As Is

More To Choose From On Our Lot and Other Locations

- Knight 3375 375 Cu. Ft. **\$5,500**
- Knight 3250 250 Cu. Ft. **\$4,000**
- Knight 3300 300 Cu. Ft. **\$7,000**
- NDE 600 Used 2 Years, 600 Cu. Ft. **\$18,500**
- NDE 500 Used 3 Years, 500 Cu. Ft. **\$16,500**
- Farmmaster Model 140 Stationary 140 Bushel with Scales **\$3,500**

3 Year Old Lucknow Model 285 Trailer Type 285 Bushel, Only 3 Years Old **\$6,500**

Used Keenan Mixers Traded For Larger Models
FP100 Keenan 350 Cu. Ft.
FP 80 Keenan 280 Cu. Ft.
FP140 Keenan 500 Cu. Ft.
FP170 Keenan 600 Cu. Ft.

Used Reconditioned Keenan Mixers Coming and Going Daily!
Please Call For Current Availability
Very Competitive, Variable Low Rate Financing with Credit Approval!

BINKLEY-HURST BROS. INC.
133 Rothsville Station Rd.
P.O. Box 0395, Lititz, PA 17543-0395
(717) 626-4705 1-800-414-4705 Fax (717) 626-0996

Phoma Crown Rot — The Traffic Disease

Of the many disease pathogens known to kill alfalfa seedlings, reduce yields and shorten stand life, only one — Phoma crown rot is called the "Traffic Disease."

A part of the crown rot complex of fungi and bacteria found in nearly every alfalfa-growing region of the U.S., Phoma crown rot is frequently associated with the crown damage resulting from wheel traffic and heavy grazing pressure. The disease commonly attacks the central portion of the crown, destroying crown buds and resulting in weakened plants, reduced stand life, and declining yields. Re-

searchers say that stands more than two years old are particularly vulnerable to this disease.

"There's probably a greater incidence of Phoma crown rot than many growers realize," said Jim Moutray, director of research for America's Alfalfa. "It's an opportunistic pathogen that tends to penetrate plant crowns after they have been damaged by wheel or grazing traffic, hence the name, the "Traffic Disease."

While it's difficult to measure the amount of yield lost to Phoma crown rot alone, recent field trails at the University of Wisconsin have demonstrated

that wheel traffic — and associated diseases can reduce alfalfa yields by as much as 70 percent on any given harvest. Now, alfalfa growers can protect their stands from Phoma crown rot and the yield losses associated with wheel traffic with new AmeriStand 403T, the first and only Traffic Tested™ variety bred to deliver more yield under every wheel.

Selected from parent stock proven to withstand intense grazing and wheel traffic, AmeriStand 403T has the genetic potential to produce crowns and roots nearly twice the size of many conventional varieties. Not only is AmeriS-

tand 403T the first variety offering a high level of resistance to Phoma crown rot, but it is also highly resistant to other major diseases including Aphanomyces root rot, Phytophthora root rot, Verticillium wilt, Fusarium wilt, and Anthracnose. Because AmeriStand 403T combines the winterhardiness of a "2" fall dormant variety with the yield potential of a "4" dormancy full-season variety, it is adapted to nearly all alfalfa-growing areas of the country. Last year, this variety became the first full-season variety to earn a winter survival rating of 1.8 — the highest such rating ever awarded a full-season variety in the nation's only independent university trials.

The offspring of 148 parent clones, AmeriStand 403T was introduced in limited supplies in 2001. Growers who have now completed their first two full harvest seasons with this new variety have reported exceptional stand establishment, rapid root and crown development, and big yields of high quality hay.

For more information, including a free video, call America's Alfalfa Customer Service at (800) 873-2532 or visit www.americasalfalfa.com.

PFGC Members Forage Market

PFGC members are welcome to submit an ad for hay or silage for publication in *Foraging Around*.

Deadline is Jan. 24 for the Feb. 8 issue.

Send ad information to Richard Hann, PFGC, P.O. Box 355, Hershey, PA 17033, or e-mail Hannr54+Aaol.com.

Please remember we accept ads for forages only.

We received the following submission for this issue:

FOR SALE

Hay and straw. 3x3x8-ft. and 70- and 35-lb. double-compressed bales. Alfalfa, alfalfa mixed, timothy mixed, and wheat straw. Worldwide delivery available. Heidel Hollow Farm, Lehigh County, Pa. Forage Products for the Planet. (888) 422-5243.

Kverneland excellence in a whole new field



Round Taarup discs reject stone

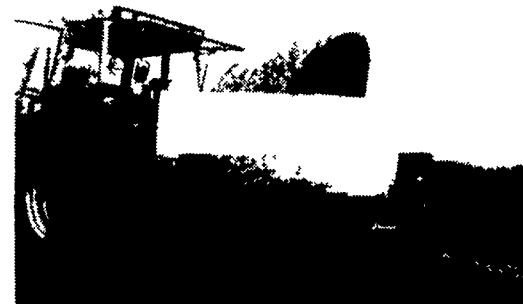
Benefits: Round discs reject stones more smoothly. It is impossible for a round disc to impact with a stone as it has no corners or leading edges. Foreign objects jammed between counter rotating round discs are never seen.



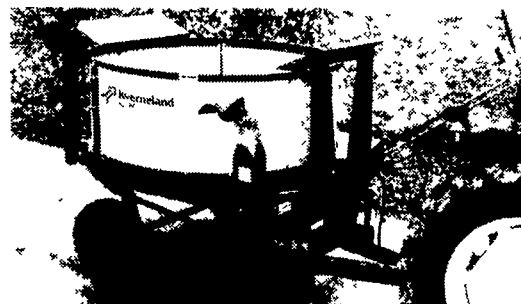
Super-Floater Suspension

- Patented cutterbar flotation system with dual suspension the cutterbar reacts to obstacles independent of the rest of the machine
- Lower ground pressure improves reliability and reduces crop stubble damage
- Tool-free cutting height adjustment

See our extensive family of hay tools which includes disc mowers, rakes and tedders



Kverneland
- The Number One selling round bale wrapper in The United States and the World!
- Kverneland pioneered the wrap system in 1986
- Complete range of machines to suit every need three trailed models, two mounted self-loading, three mounted conventional, and now an ultra high capacity wrapper made expressly for large square bales up to 4'x4'x6' in size



Kverneland Kidd KD 825 Silage Chopper
- PTO driven discharge conveyor decelerates the chopped material ensuring an even and positive flow of feed without an excess of dust or loss
- Four other models are available for dry hay and straw applications
- Hydraulic bale lifter and slip clutch protected PTO together provide safe, smooth, low torque starts

McConnellsburg Motors
McConnellsburg, PA
717-485-3181

Hess Farm Equipment
Canton, PA
570-673-5143

Rovendale Ag & Barn Equipment
Watsonstown, PA
570-588-9564

M M Weaver & Son
Leola, PA
717-656-2321

Kverneland
where farming means business

BUY, SELL, TRADE OR RENT THROUGH THE CLASSIFIED ADS IN Lancaster Farming

PHONE:
717-626-1164
OR
717-394-3047
FAX:
717-733-6058

Mon., Tues.,
Wed., Fri.
8 AM to 5 PM
Thurs.
7 AM to 5 PM

