

**Salesmen:**  
**Alvin Martin**  
**Bill Ryland**



# WENGENERS

## OF MYERSTOWN

### FARM MACHINERY

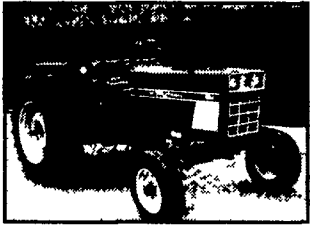
**(717) 866-2135**



**814 S. COLLEGE ST. (ROUTE 501)**

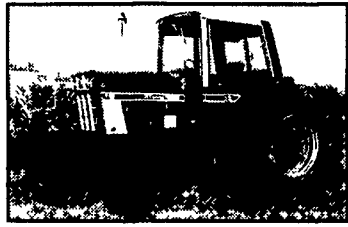
**WWW.wengers.com**

**MYERSTOWN, PA 17067**



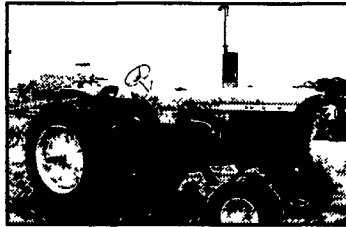
**IH 584**

1978 Good quality tractor, 1393 hrs, 1 remote, Rear wheel weights, Rated at 52HP

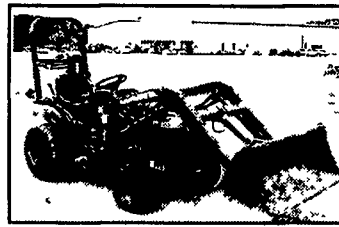


**1977 International 986**

1521 hours, 18.4x38 tires, 2 sets remote outlets, cab w/air, wheel weights, 540/1000 PTO, rated at 105 • \$18,000

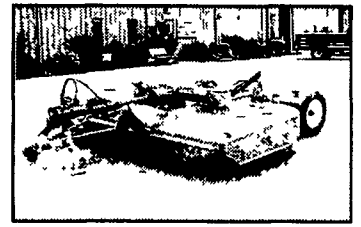


**1970 John Deere 4020 diesel**, factory wide front, good 18 4x34 tires, 2 remote outlets, side console controls, syncro-range trans • \$12,900



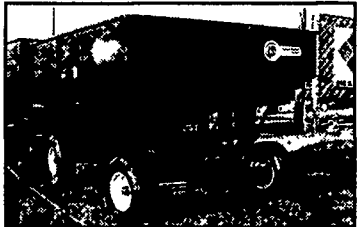
**Kubota BX 2200 4x4 w/Loader**

45 hours, same as new condition, turf tires, 3pt hitch, sharp \$10,500

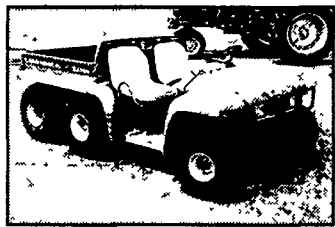


**Woods 1260**

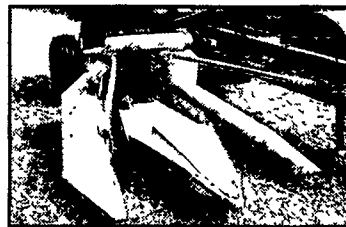
10'6" Pull type mower, Aircraft tires, heavy duty gear boxes, Lift cylinder



**McCurdy Gravity Bin Wagon**, model 275 bin on a Danco 8 ton gear, 11L15 tires, nice, 12 bin wagons in stock, \$2,250



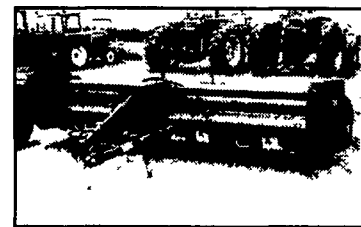
**JD 6x4 Diesel Gator**, Electric dump, front brush guard, trailer hitch \$6,900



**Ford NH 822 2RN Corn Head**, Very good quality, ready to work \$1,650



**Ford NH 824 2RN Corn Head** Good condition, 2 row narrow head \$2,350



**CIH Model 50**, Flail Chopper 12 1/2', good cond lift cyl

**COMPACT TRACTORS**

John Deere 4300 4x4 loader & backhoe  
 Ford NH TC21D 4x4 w/blade  
 Kubota 2250 4x4 w/loader  
 Kubota BX 220 4x4 w/1 dr.  
 Power King 2414 w/3 pt. & PTO  
 JD 345 lawn & garden w/ 48"  
 JD 655 4x4 w/loader & mower

**MANURE SPREADERS**

2) Ford NH 155, very nice  
 Ford NH 145 w/tailgate  
 IH Cub Manure Spreader  
 NI 351A Spreader  
 NI 217 Spreader  
 Pequea 50 ground drive  
 McCormick 200 ground drive

**DISC HARROWS**

White 271 18' Rockflex,  
 JD 19' 220 Center Fold  
 JD MX225 7' offset (new)  
 JD 8' & 9' Disc  
 2) JD 6' Offset drag disc  
 IH 10', 12' & 13' Disc  
 MF 6' 3pt Offset Disc  
 MF 9' 3pt Disc  
 IH 8' FH Disk  
 Ford 10' 3pt Disc  
 Case 8' Offset  
 Several Small 3pt Discs, 4', 5', 6' & 7'

**SOIL SAVERS & CHISELS**

IH 6000 9T soil saver  
 Glenco 5T soil saver  
 Deutz Allis 7T soil saver  
 MF 9T soil saver  
 Sunflower 7T soil saver  
 Hesston 9T soil saver  
 Landoll 9T soil saver  
 IH 7T pull type chisel  
 Blanton 7T 3pt chisel  
 Bush Hog 8T 3pt chisel  
 Bush Hog 12T pull chisel

**GRAIN DRILLS**

JD 8200 21x10 DD soybean drill  
 2) JD FB-B 15x7 w/Grass  
 Oliver 13x7 DD w/Grass & Fert  
 Krause 13' no til drill

**HARVESTERS**

Gehl 750 w/2RN and hay head  
 Gehl 760 w/2RN  
 2) NH 718  
 NH 822 2RN head  
 NH 824 2RN head  
 JD 2RN corn head  
 JD 244 2RW snapper head

**TRACTORS**

Case IH 495 4x4 w/Loader  
 Case IH 695 low profile  
 Case IH 265 offset, hi-clear  
 IH 986 cab, low hours  
 IH 584 nice  
 IH 274 offset w/cultivator  
 IH 330 uty gas, FH  
 IH 154 loboy w/ 5' mower  
 JD 2755 hi-lo, 2R  
 JD 4020 D side console  
 JD 3020D  
 JD 301G low utility w/reverser  
 JD 302D low utility  
 JD 60 NF, complete factory 3pt, PS  
 JD 60 low seat  
 JD 40 standard  
 JD 50 w/WF 3pt. loader  
 JD AR, restored, nice  
 4) JD B, tractor  
 JD 'D', pto - new tires  
 JD MT  
 3) JD H tractor  
 Ford NH 3930 w/canopy  
 Ford 2000 gas, p.s.  
 Ford 1710 hi-clear offset w/cult  
 Ford 8N  
 Ford 860  
 Ferguson T030, restored  
 Case/David Brown 885 diesel, nice  
 AC WD 45 diesel  
 AC C  
 2) Farmall Cub, any attach. available  
 Farmall Super MTA w/wide front  
 Farmall Super C w/FH  
 Farmall C w/ldr  
 5) Farmall 140 most attach available  
 Farmall 100 w/FH & cultivator  
 Oliver 1555 diesel, WF, canopy  
 Oliver 770 gas, try, 3 pt.

**ROTARY and SICKLE MOWERS**

Woods HD 315 15' Batwing, 1000 PTO  
 Woods 3180 15' Batwing  
 Woods 208 8' pull Type  
 Woods 1260 10 1/2' pull  
 Woods 7' 3 pt. Brushbull  
 Woods 5', 6' and 7' rear discharge estate  
 Woods 59 for Cub & A  
 IH 5 1/2' Pull Rotary  
 JD 6' Pull Rotary  
 Bush Hog 7' 3pt Rotary  
 Rhino 10' rotary mower  
 Bush Hog 8' Pull Offset Mower  
 King Kutter 5' 3 pt, 6' 3pt. Rotary  
 Super A & Cub Sickle Mower  
 Ford 501 7' 3 pt Sickle  
 JD 50 Side Mt. Sickle  
 Kuhn 7' 3 pt. disc mower, sharp  
 JD 9' 3 pt. Sickle  
 2) IH 7' Fast Hitch Sickle  
 NH 455 Pull Type Sickle  
 NH 451 7' 3pt. Sickle  
 Haban 5' 3pt. Sickle Mower  
 IH 7' Semi Mount Sickle

**HAYBINES**

Case IH 1190 7' Haybine, like new  
 JD 1460 Discbine  
 JD 1209 9' Haybine  
 NH 477 7' Haybine  
 NH 472 7' haybine (sharp)

**MISCELLANEOUS**

2) JD 6x4 diesel Gator  
 JD 6x4 Gator  
 4) JD 4x2 Gator  
 Gehl 7190 feed cart  
 NH 355 grinder mixer  
 18.4x38 and 20.8x38 Open Center Duals  
 Axle Duals to Fit JD 7400  
 52", 60" & 72" Woods 3 Pt Rototiller  
 JD 16A Flail Chopper  
 NH 36 Flail Chopper  
 Brady 722 Flail Chopper  
 13' 3 pt. Perfecta Harrow  
 Degelman Rock Picker  
 Danuser post-hole digger & others  
 Cub & Super A cultivators  
 Krause 10' landsman  
 Several Loaders Including EIH 2250,  
 JD 245  
 Several HD 8' 3pt Blades  
 Several Plows  
 Several Gravity Bin Wagons  
 JD 1065 wagon gears  
 Woods 650 3 pt. backhoe nice  
 Woods 6500 & 7500 3 pt. backhoe  
 Case 1816B Skid Loader  
 NH LS190 Skid Loader, low hours, sharp  
 Bobcat 530 Diesel Skid Loader  
 Case IH 50 12-1/2' Stalk Shredder  
 Brillion 8' packer/seeders

**CORNPLANTERS**

AC 300 2R 3 pt w/no tils  
 IH 56 4R planter  
 6) JD 71 ground drive units  
 JD 7200 6RN, dry, min-til  
 IH IR 1pt FH  
 2) MF 2R 3 pt Planter  
 Ford 2R 3 pt. planter

**BALERS and RAKES**

JD 375 round baler  
 MF 124 w/thrower  
 NI 484 round baler  
 JD 672 w/dolly  
 NI 402 w/dolly  
 MF rake  
 Zimmerman 7' hay tedder  
 NH 254 3 pt rake tedder  
 Ford NH 256 rake

**CULTIPACKERS & MULCHERS**

Brillion 14' cultimulcher  
 Dunham 12' cultimulcher  
 Brillion 5 1/2' cultimulcher  
 Hugo 14' roller/harrow combination  
 Brillion 10' packer w/end transport  
 4) Brillion 12' packer, 2 w/end transport  
 Brillion 14' rear transport packer  
 Brillion 21' x-fold packer (like new)  
 Brillion 3' packer pups  
 JD 12' packer  
 JD 12' cultimulcher  
 Dunham 10' & 12' Packer

**FARM TRACTOR PARTS**

**800-451-5240 (717) 866-2135 fax 717-866-7866**  
**Mon.-Fri. 7:30 AM to 5:00 PM • Sat. 7:30 to Noon**

[www.wengers.com](http://www.wengers.com)

**order used, reconditioned, or new parts online**

**RECENTLY ARRIVED FOR SALVAGE**

**AC C AC CA AC WC MF 180 MF 1135 MF 3505**

[tractorparts@wengers.com](mailto:tractorparts@wengers.com)

