

**2 BEDROOM 1 STORY HOUSE
IN EAST COCALICO TOWNSHIP
PUBLIC AUCTION
THURS., SEPT. 12, 2002
AUCTION TIME 6:00 P.M.**

Location: 125 E. Church Street, Stevens (Reamstown), PA



BRICK & VINYL SIDED: 1 story house with large eat-in kitchen with wooden cabinets, large living room, 2 large bedrooms, full modern bathroom, full basement with 12'x18' finished family room & laundry. House is in excellent condition with recent new carpet, well insulated with maintenance free exterior, plaster walls, oil hot air heat, public water & sewer, breezeway to 1 car garage, mature shade, large backyard with a new 10'x16' storage shed, 1250 sq. ft. living space with family room. Cocalico School District, Zoned Residential, 1/3 Acre Lot, New Vinyl Tilt-in Windows, Central Air Conditioning, New Siding & Spouting, New Macadam Driveway To View Call Auctioneer 733-3511

TERMS: 10% down payment at auction, balance at final settlement on or before November 1, 2002. For help with bank financing call 733-3511.

NOTE: A well kept house with many updates. Be prepared to buy, sellers are relocating. Attorney: George Cook 299-1100

AUCTION BY: RANDALL L. & LAVONNE K. WEAVER
(717) 336-0288



410 West Church Rd.
Ephrata, PA 17522
(717) 733-3511

Public Auction Register

Closing Date Monday 5:00 P.M.
of each week's publication

Internet Sale Register will be updated
by Friday at 12 Noon

ATTENTION AUCTIONEERS

All sales register info needs complete address,
street, town, county & state.

PUBLIC AUCTION

**37 ACRE LIMESTONE FARM
3 CAR GAR. - BANK BARN.
OFFICE/SHOP - 5 ACRE LAKE**

THURS., OCTOBER 3 1 P.M.

LOCATION: 71 Spangler Rd., Lebanon From Hershey take Rt 322 E approx 8 miles to Spangler Rd on left OR Take Rt 72 N from Turnpike Exit #20 Straight on Rt 322 W approx 1 mile to Spangler Rd on right West Cornwall Twp., Lebanon Co



"ONE OF A KIND" 37 ACRE limestone farm. Dated 1832 restored limestone 2-1/2 sty Dwl w/3 bdrms, 2 baths & 2,508 sq ft. finished area Country kitchen, family & living rms., formal dining rm., 4 stone fireplaces, wide window sills 1 bdrm. summer house/apartment. Deck overlooking in-ground pool, pavilion & lake **Out Bldgs. Include** - Restored 1878 stone & frame bank barn 56'x40' w/attached 4 yr old office/shop & garage bldg 58'x40' w/approx 1,520 sq ft finished office & conference rm area, oil radiant heat & central air Large heated 40'x20' shop/garage 3 car garage 24'x40' all on 37 Acre tract w/approx 25 acres tillable & balance pasture w/spring fed 5 Acre lake & stream

NOTE: Unique opportunity to purchase beautiful restored limestone farm at auction For color brochure, land plotting, or financing call Auctioneers 717-733-1006 Inspection by appointment or Open House Sat., Sept. 14, 21 & 28 from 1 to 4 PM

RICHARD M. & SANDRA L. WIZAR
717-274-1333 or 717-274-9803

Randal V. Kline,
Roy E. Good, Jr.,
Keith Snyder Auctioneers
717-733-1006
Lic. #499, #2116, #3433



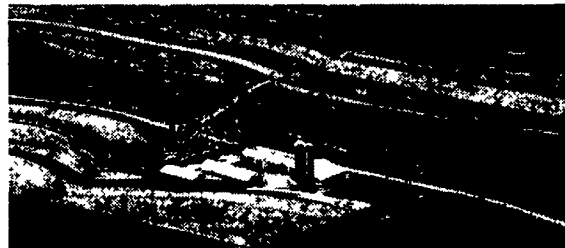
www.klinekreidergood.com

107.9 Acre Dairy Farm Plus 2 Additional Parcels

Public Auction

Saturday, September 21, 2002

Auction Time: 8:30 AM Real Estate: 11:00 AM



Located at 1959 Valley View Road, Mount Joy, PA, Lancaster County Rt. 230 at the West End of Mount Joy, next to Wissler Motor, Turn North onto Snyder Road to Mt. Pleasant Road. Turn Left and Turn Right, almost immediately, onto Grandview Road to Valley View Road. Turn Right to Auction Site.

Parcel #1: 107.9 Acres, M/L, Dairy Farm: Approx 90 tillable acres, the balance pasture and two farm ponds. Thereon erected a 5 bedroom - 2-1/2 story, stone & frame w/masonry brick finish farmhouse, with kitchen/dining room, large living room and family room with hardwood flooring. Second floor has five bedrooms and one bath with wood flooring. There is an attached one-story 12'x16' room with entrance to the kitchen. Oil hot water furnace, well and septic.

Large Two-Story Bank Barn with steel siding. Lower level has 52 tie stalls with gutter cleaner, 2" stainless steel pipeline. Attached milk house with 650-gallon Girton bulk tank, hot water heater. Upper level: 3 drive floors, hay and equipment storage. This barn also has an attached 68'x70' loafing area with bunk feeder and 1 - 20'x72' and 1 - 16'x72' poured concrete silos with unloaders.

Corn Barn: 42'x62' frame with metal roof, drive through, with cribs on both sides, concrete floor.
2 - Equipment Sheds: 40'x80'x18' and 30'x60'x14', both with metal siding and roof.
2 - Metal Grain Tanks

4 Car Detached Garage: 24'x42' Block, shingle roof, concrete floor with 4 overhead doors.

Parcel #2: 28.5 Acre, Tract of land. 70% tillable, balance pasture. This property is located south of Tract 1 on the east side of Grandview Road.

Parcel #3: 11.4 Acre, M/L, Tract of level land, currently cultivated with approximately 567' of road frontage on the west side Grandview Road. This tract is across the road from Tract #2.

Note: All 3 Tracts are zoned agriculture, enrolled in Clean & Green and are not in the Agriculture Preserve. These are properties that you won't want to miss. This is a beautiful farm overlooking 2 ponds and scenic farmland.

These properties will be offered separately. For Plot Plans and Maps, contact Auctioneers, Raymond Miller 717-653-8762 or

Jim Hershey 717-689-0235.

Open House: Saturday, September 7 from 1:00 - 3:00 PM.

Terms: 10% down at day of sale, balance on or before 45 days. Any announcement day of sale supersedes this printed ad.

Farm Equip: J.D. 2840, 2250 hrs., diesel; J.D. 2240 w/J.D. 145 loader; G Allis Chalmers w/hyd. lift & cultivator; J.D. 3 pt., #350 7' grass mower; J.D. 3 pt. scraper blade; J.D. 9' KB disk harrow; 2-8' cultipackers, 3 pt. wood splitter, 3 pt. saw buck; Surge 60kw generator on trailer, 2-250 gal. fuel tanks; chain saw; ext. ladders; log chains; Stihl weed eater; J.D. pressure washer; B&D saw; many more items.

Vehicles: 1982 4 dr. Pontiac Bonneville, 131,000 mi.; 1974 GMC 3/4 T P-up, 75,000, w/cattle racks; Honda 4 wheeler; 2 - J.D. 214 Riding Mowers w/44" mower decks.

Antiques & Household Goods: 3 pc. Waterfall B.R. suite; 4 pc. B.R. suite, dresser, cedar chest; wicker baby coach, crib, play pen, ext. table w/3 bds.; early cupboard; Frig. 20 cu. ft. ref./freezer; P.B. tumblers; Frig. elect. stove; sm. coal cook-stove; meat bench; crocks, iron; tin; agateware; linens; quilt; advertiser items; numerous other items.

Order of Sale: 8:30 H.H. Goods; 10:30 Car, Truck; 11:00 Real Estate followed by Farm Items & Equipment.

Attorney: Carl R. Hallgren

**Auction For:
Helen F. Kreider
Estate of Charles H. Kreider
717-653-5909**

Auctioneers:

Raymond Miller
AU617L
717-653-8762

Jim Hershey
AU2479L
717-665-7284
717-689-0235 (Cell)

SAT OCT 19 - 9 30AM Cummins Const Co Inc auction, near Frederick, MD, discontinued business, at 11202 Libertytown Road, along MD Rt 26, farm vehicles, equip, tools, pers prop, urn, Off Interstate 70 at Exit 62 onto Rt 75 N to Libertytown, L into Rt 26 W approx 2.5 mi to auction By Cochran Auct 301-739-0538, 1-800-310-2844, fax 301-432-2844

SAT OCT 19 - 10AM CT Seretny Greenhouse Auct at Rt 32 Mansfield Center, greenhouses, support systems, office, retail equip by Phil Jacquier 413-569-3421 www.jacquierauctions.com

TUES, OCT 22 - 9 AM Horses, Farm Machinery & Tools, 161 Volt Rd, Narvon, PA, Mary F Smucker, Snyder's Auction Service, AU-000873-L, 717-733-7052

TUES OCT 22 - 9AM Airplanes, Morgan Rdst, Honda Goldwing, andbergh coil, aviation, old toys, antiques, coll Preview Mon Oct 21 12 to 5 PM, at Morgantown Airport, by Homing Farm Agency 310-286-5183, AU-2417-L

WED OCT 23 - Farm Equipment 109 N Maple Ave, Leola, Pa Wolgemuth Auction #21357 717-656-2947

THURS OCT 24 - Silver-Shadow Holstein Milking Herd & Select Heifer Sale, New Sharon, ME The Davis Families, owners 75 of the finest ever bred by Silver-Shadow The Cattle Exchange

THURS OCT 24 - 3 30PM General Auction, Col Kirk's Auction Gallery, 2267 State Rt 42, Millville, Pa 6 Mi N of Bloomsburg/2 Mi S of Millville, Col Kirk S Williams, AU-002623-L, 570-

458-6882

FRI OCT 25 - 1PM State Graded Feeder Pig Sales, Carlisle Livestock Market Inc Ext 44 off I-81 turn S then left onto Alexander Spring Rd 717-249-4511

FRI OCT 25 - 6PM Feeder Sale New Holland Sales Stables, Inc 101 W Fulton St., New Holland, Pa

FRI OCT 25 - 6PM General Auction, Col Kirk's Auction Gallery, 2267 State Rt 42, Millville, Pa 6 Mi N of Bloomsburg/2 Mi S of Millville, Col Kirk S Williams, AU-002623-L, 570-458-6882

FRI OCT 25 - 7 30PM Canisteo NY Allegheny-Stuebien Holstein Club Sale "The Oldest Continuous Club Sale in the USA Conducted by Fraley Auct Co 570-546-6907 RY71L

SAT OCT 26 - New England Convention Sale, Windsor Fairgrounds, Windsor, Me. The Cattle Exchange

SAT OCT 26 - 9 AM Estate auction, 38 acre Mahantongo Valley Farm, Loc approx 35 mi N of Harnsburg, 20 mi S of Sunbury and just N of the village of Klingerstown along the Klingerstown to Pillow Road in Lower Northumberland Co, PA (570)425-2533 for inspection

SAT OCT 26 - 10AM Belleville Livestock Market Fall Heifer Sale Gene Glick 717-667-2703

SAT OCT 26 - 11AM Horse Sale Middleburg Livestock Auction Sales, Inc PO Box 185, Middleburg, Pa Clarence Shirk and John Shirk, owners 717-656-8793

SAT OCT 26 - 11 AM Lebanon-Berks Fall Harvest Sale, holsteins, heifers Harry Bachman-

717-656-8793

SAT OCT 26 - 11 AM Lebanon-Berks Fall Harvest Sale, holsteins, heifers Harry Bachman-

717-656-8793

SAT OCT 26 - 11 AM Lebanon-Berks Fall Harvest Sale, holsteins, heifers Harry Bachman-

717-656-8793

SAT OCT 26 - 11 AM Lebanon-Berks Fall Harvest Sale, holsteins, heifers Harry Bachman-

717-656-8793

SAT OCT 26 - 11 AM Lebanon-Berks Fall Harvest Sale, holsteins, heifers Harry Bachman-

717-656-8793

SAT OCT 26 - 11 AM Lebanon-Berks Fall Harvest Sale, holsteins, heifers Harry Bachman-

717-656-8793

SAT OCT 26 - 11 AM Lebanon-Berks Fall Harvest Sale, holsteins, heifers Harry Bachman-

717-656-8793

SAT OCT 26 - 11 AM Lebanon-Berks Fall Harvest Sale, holsteins, heifers Harry Bachman-

717-656-8793

SAT OCT 26 - 11 AM Lebanon-Berks Fall Harvest Sale, holsteins, heifers Harry Bachman-

717-656-8793

SAT OCT 26 - 11 AM Lebanon-Berks Fall Harvest Sale, holsteins, heifers Harry Bachman-

717-656-8793

SAT OCT 26 - 11 AM Lebanon-Berks Fall Harvest Sale, holsteins, heifers Harry Bachman-

717-656-8793

SAT OCT 26 - 11 AM Lebanon-Berks Fall Harvest Sale, holsteins, heifers Harry Bachman-

717-656-8793

SAT OCT 26 - 11 AM Lebanon-Berks Fall Harvest Sale, holsteins, heifers Harry Bachman-

717-656-8793

Auct AU-000033-L 717-560-1830

WED, OCT 30 - 11AM Dairy Show & Sale New Holland Sales Stables, Inc 101 W Fulton St New Holland, Pa

THURS OCT 31 - 3 30PM General Auction, Col Kirk's Auction Gallery, 2267 State Rt 42 Millville, Pa 6 Mi N of Bloomsburg/2 Mi S of Millville Col Kirk S Williams, AU-002623-L, 570-458-6882

NOVEMBER

FRI NOV 1 - 6PM General Auction, Col Kirk's Auction Gallery, 2267 State Rt 42, Millville, Pa 6 Mi N of Bloomsburg/2 Mi S of Millville, Col Kirk S Williams, AU 202623-L, 570-458-6882

FRI NOV 1 - 7PM Graded Feeder Sale Middleburg Livestock Auction Sales, Inc PO Box 185, Middleburg, Pa Clarence Shirk and John Shirk, owners 717-656-3793

SAT NOV 2 - New York Holstein Harvest Sale, Cornell University, Ithaca, NY The Cattle Exchange

SAT NOV 2 - 9AM Horse Sale Vell's Stables 834 Wallace Rd, New Holland, Pa 717-354-8397

TUES NOV 5 - 8AM Special Fed Cattle Sales Earlybird pens close at 2 PM Exit 44 off I-81 turn south then left onto Alexander Spring Rd 717-249-4511

TUES NOV 5 - 7 30 PM Feeder Cattle Sale Carlisle Livestock Market Inc Ext 44 off I-81, turn south then left onto Alexander Spring Rd 717-249-4511

WED NOV 6 - 9AM Cumberland Valley Produce Auction Annual Fall Machinery Consignment Sale, located 4 miles N of Shippenburg, take rt 11 N to Koser rd, auction 1/2 mile George Baldwin, AU001302L, 717-530-5007

Dairy and Livestock Sales

**A LESSON
WELL
LEARNED...
LANCASTER
FARMING'S
CLASSIFIED
ADS
GET RESULTS!**



**FEEDER
SALE**
Wed., Sept. 11
7:30 P.M.
**Four
States
Livestock**
HAGERSTOWN, MD
Exit 29 off I-70
(301) 733-8120

Middleburg Livestock Auction

Feeder Cattle Sale

Sept. 20, 2002 @ 7:00PM

Regular Monthly Feeder Cattle Sale

All Consignments Welcome!

**To Have Cattle Advertised Notify Sale Barn By Sept. 9th
570-837-2222.**

Auctioneer

C.W. Shirk #002750

Middleburg Livestock Auction

Regular Monthly Dairy Sale

Fri., Sept. 13, 2002

@ 7:00PM

**Consignments of fresh cows, dry cows, springers,
open and bred heifers and bulls!**

All Consignments Welcome!

Consigned from our regular consignors:

Fresh young cows and springers with good legs, feet and udders w/good milk weights. Load of fancy fresh cows from Jim Hostetter, load of fresh cows from James Few (mostly 1st and 2nd calfs).

Approx. 35 head Canadian fresh cows and springers from Gilles Trudeau. Also 6-10 top quality open and bred heifers from Sam Lantz, Millersburg. Plus local consignments!

Something for Everyone! Plan to Attend!

Will have good replacement cows!

For further information call Sale Barn 570-837-2222.

Auctioneer C.W. Shirk #002750

Note: Consignors - Please Send Information With Truckers.