

Westminster Livestock

Hagerstown, Md.

Report Supplied By Auction
September 3, 2002

SLAUGHTER COWS: 112 HEAD, STEADY. BREAKERS 37.00-42.00. BONFRS 34.00-38.00, I EAN 30.00-34.00, THIN 30.00 DOWN

BULLS: 9 HEAD. YG+N1 1834 LBS. 56 75, YG+N2 1000-2350 LBS. 44 00-48 50

FED STEERS: MAINLY HOLSTFINS OFFERED. HIGH CHOICE 1500 LBS 63 75, LOW CHOICE 1300-1550 LBS 60 00-61.00, HIGH CHOICE HOLSTFINS 1200-1450 LBS. 54 00-56 25, LOW CHOICE 50.00-54.00.

FED HEIFERS: HIGH CHOICE TO PRIME 1200 LBS. 65.00, CHOICE 2-3 1000-1375 LBS. 59 00-61.50, HOLSTFINS 42.00-48.00

CALVES. 165 HEAD, GOOD SLAUGHTER. 80-110 LBS. 45.00-55.00; HOLSTEIN BULLS RETURNING TO FARM, STEADY TO 5.00 HIGHER +N1 94-120 LBS. 110.00-125.00, +N2 70.00-105.00, 80-92 LBS. 50.00-75.00, HOLSTEIN HEIFERS, GOOD DEMAND. +N1 90-115 LBS. 41.00-52.00, +N2 80-110 LBS. 25.00-40.00, 70-80 LBS. 100.00-145.00; BEEF X BULLS 115 LBS. AT 105.00.

BUTCHER HOGS: 61 HEAD, WEAK DEMAND. +N1 AND 2 220-275 LBS. 18.00-1925, +N1 AND 3 270-350 LBS. 16.00-17.00, 350-450 LBS. 10 00-11.00, 6 HEAD 505 LBS. AT 11.75.

SOWS: 4 HEAD. 400-500 LBS 7 00-9.75, 600-700 LBS. 11.00.

BOARS: 746 LBS. AT 3.25.

STOCK CATTLE: 2.00-4 00 HIGHER STEERS MED. AND LARGE FRAME 300-500 LBS. 71.00-80.00, 500-700 LBS. 60.00-70.00, 700-800 LBS. 59.00-65.00.

HEIFERS: MED. AND LARGE FRAME 300-500 LBS. 67.00-78.00, 1 AT 84.00, 500-700 LBS. 63.00-69.00, 3 HEAD 750 LBS AT 67 50.

BULLS. MED AND LARGE FRAME 200-400 LBS 75.00-85.00, 1 AT 117.00, 400-500 LBS. 70.00-82.00, 500-600 LBS 59 00-70.00, 600-800 LBS. 48.00-58 00.

SHEEP: 56 HEAD 20.00-49 00

LAMBS 56 HEAD, 5 00 LOWER. HIGH CHOICE 100-120 LBS. 68.00-73.00, 80-100 LBS. 74.00-80.00, GOOD 70-110 LBS. 69.00-73.00, 50-70 LBS. 70.00-80.00.

GOATS: 92 HEAD. LARGE BILLIFS AND WETHERS 65.00-95.00, FEW 103.00-120.00, MEDIUM 40.00-70.00, LARGE NANNIES 50.00-65.00, MEDIUM 35.00-50.00, FLESHY KIDS 35.00-60.00.

PIGS AND SHOATS: 72 HEAD. BY THE HEAD, VERY POOR BUYER INTEREST. 20-40 LBS. 5.00-11.00, 45-70 LBS 11.00-17.00; BY THE LB. 40-55 LBS 29.00-37.00, 60-75 LBS. 26.00-27.00.

270.00-275.00; Chicago was 2.00 to 10.00 lower from 268.00-275.00 per ton. Rail Hominy Feed, Central Illinois Points was steady to 9.00 higher from 71.00-83.00; truck was steady to 9.00 higher from 70.00-85.00. Crude Corn Oil was 50 points lower at 20.50-22.00 cents per pound

MILLFEEDS: Northwest steady to 2.00 higher from 61 00-74.00; Buffalo steady to 2.00 lower at 49.00-61.00 per ton.

AI FAI FA PFI LETS: Toledo, Ohio 17 percent dehydrated steady from 149.00-172 00, meal steady from 152.50-175.50. 15 percent was steady from 134 00-169.50 per ton; meal steady from 137.50-173 00.

DISTILLER'S DRIFD GRAINS Central Illinois steady from 84.00-95.00; Chicago steady to 2.00 higher from 81.00-102.00; Lawrenceburg, Il, closed for seasonal shut down until Oct.; Kansas and Nebraska were steady to 2.00 higher from 100.00-115.00; Minneapolis was steady at 80.00 per ton.

BREWER'S DRIED GRAINS: Newark, NJ was steady at 86.00; Williamsburg, VA was steady at 76.00 per ton.

Oklahoma Feeder Cattle Weekly

Oklahoma City, OK

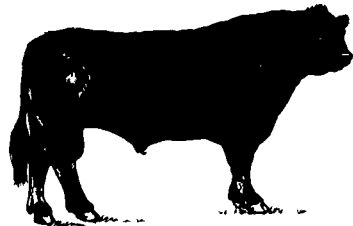
September 4, 2002

Report Supplied By USDA

OKLAHOMA NATIONAL STOCKYARDS, Weekly Cattle Summary — Compared to last week: Feeder cattle and calves steady on holiday reduced receipts. Demand very good for the few available. Receipts this week 1357; last week 6735; last year 1614. Supply consisted of 72% yearlings and calves over 600 lbs; 10% calves; 18% cows and bulls. Heifers comprised 34% of feeder and calf supply.

FEEDER STEERS: Medium and Large 1: CALVES: 550-600 lbs (557 lbs) 85 00-86.25 (85.62); 600-650 lbs (646 lbs) 82.00-84.00 (83.80); 650-700 lbs (656 lbs) 80.00-86.00 (84.75); 735 lbs 74.85. YEARLINGS: 650-700 lbs (672 lbs) 83.50-86.25 (84.90); 700-750 lbs (726 lbs) 81.00-81.75 (81.53); 750-800 lbs (757 lbs) 80.00-80.50 (80.31); 910 lbs 73.25.

FEEDER HEIFERS: Medium and Large 1: CALVES: 450 lbs 83.00; 500-550 lbs (517 lbs) 78.00-79.00 (78.43); 550-600 lbs (577 lbs) 75.75-76.00 (75.85); 615 lbs 77.50. YEARLINGS: 610 lbs 78.50; 750-800 lbs (775 lbs) 72.00-72.25 (72.21); 800-850 lbs (816 lbs) 71.50-71.75 (71.67).



Corn Belt Feedstuff

St. Joseph, Mo.

September 3, 2002

Report Supplied By USDA

CORN BFLT FEEDSTUFF. Wholesale Bids. Truck or Rail dollars per ton.

SOYBEAN MEAL: 48 percent rail was 3.50-4.50 higher from 186.00-189.00. 48 percent truck was 3.50 higher from 190.00-198.00 per ton.

CORN BY-PRODUCTS: Gluten Feed 21 percent, Interior Points steady at 65.00-68.00; Chicago was steady to 50 lower from 60.50-72.00. 60 percent Gluten Meal, Interior Points 5.00 lower at

Southwest Virginia Feeder Cattle Board Sale

Richmond, Va.

September 3, 2002

Report Supplied By USDA

Special State Graded Sale at Tri-State Livestock Market, Abingdon, Sept. 2 - 1073 head sold. Prices per hundred-weight, average weight in parentheses:

STEERS: Vilas, N.C. - 61 head, Med./Lge. 2, avg. wt. 775 lb - 77.80. Abingdon - 88 head, Med./Lge. 1, few Med./Lge. 2, Small, avg. wt. 825 lb - 74.75 Todd, N.C. - 58 head, Med./Lge. 1, avg. wt. 865 lb - 74.40. Zionville, N.C. - 61 head, Med./Lge. 1, avg. wt. 875 lb - 74.60. Meadowview - 56 head, Med./Lge. 1, avg. wt. 875 lb - 73.50. Todd, N.C. - 57 head, Med./Lge. 1, avg. wt. 885 lb - 72.00. Meadowview - 44 head, Med./Lge. 1, avg. wt. 900 lb - 72.20. Laurel Bloomery, Tenn. - Med./Lge. 1 & 2, avg. wt. 950 lb - 69.80.

HOLSTEIN STFRS: Lge. 2 & 3: Damascus - 33 head, avg. wt. 900 lb - 52.00; 48 head, avg. wt. 1025 lb - 50.10. Lge. 2: Glade Springs - 48 head, avg. wt. 850 lb - 54.00. Abingdon - 46 head, avg. wt. 915 lb - 52.90. Marion - 49 head, avg. wt. 1020 lb - 50.90. Meadowview - 50 head, avg. wt. 1000 lb - 51.60; 46 head, avg. wt. 1025 lb - 52.80; 46 head, avg. wt. 1025 lb - 52.80.

HEIFERS: Abingdon - 66 head, Med. 1, Med./Lge. 2, avg. wt. 750 lb - 73.50.

HEIFERS (Guaranteed Open): Meadowview - 132 head, Med./Lge. 1, avg. wt. 760 lb - 74.00.

Wytheville Weekly Feeder Cattle

Richmond, Va.

September 4, 2002

Report Supplied by USDA

WFFKLY AUCTION at Wytheville, Sept 3 — FEEDER CATTLE. 150 head. Prices per hundredweight, based on in weights.

STEERS: 44 head. Med. and Lge. 1. 200-300 lb 90-95.00; 300-400 lb 96-97.00; 400-500 lb 85-86.00; 500-600 lb 78-81.00; 600-700 lb 75-76.00; 800-900 lb 69.00. Med. and Lge. 2: 300-400 lb 94.00; 400-500 lb 84.00; 500-600 lb 78-81.00; 600-700 lb 74.00.

HOLSTEIN STEERS: 15 head. Med. and Lge. 2: 500-700 lb 56-60.00.

HEIFERS: 61 head. Med. and Lge. 1: 200-300 lb 74-77.00; 300-400 lb 72-76.50; 500-600 lb 70.50; 600-700 lb 68.00. Med. and Lge. 2: 300-400 lb 70-75.00; 500-600 lb 75.00; 500-600 lb 69-70.00.

BULLS: 45 head. Med. and Lge. 1: 200-300 lb 95-97.00; 300-400 lb 83-90.00; 400-500 lb 80-88.00; 500-600 lb 76-81.00; 600-700 lb 61-64.00. Small 1: 300-400 lb 70-75.00; 400-500 lb 75.00; 500-600 lb 69-70.00. Med. and Lge. 2: 300-400 lb 79-84.00; 400-500 lb 75-82.00.

Winchester Weekly Feeder Cattle

Richmond, Va.

September 3, 2002

Report Supplied by USDA

WEEKLY AUCTION at Winchester, Sept. 2 — FEEDER CATTLE: 975 head.

Prices per cwt., based on in weights.

FEEDER STEERS: 311 head. Med. and Lge. 1: 200-300 lb 104.50; 300-400 lb 84-91.00; 400-500 lb 78-88.50; 500-600 lb 75-85.00; 600-700 lb 71-76.50; 700-800 lb 68-70.50; 800-900 lb 66-68.00. Med. and Lge. 2: 200-300 lb 90.50; 300-400 lb 77-85.00; 400-500 lb 73-81.00; 500-600 lb 72.50-78.00; 600-700 lb 64-69.50; 800-900 lb 63.75.

FEEDER HEIFERS: 379 head. Med. and Lge. 1: 300-400 lb 78.50-87.00; 400-500 lb 66-70.50; 600-700 lb 65.50-70.00; 700-800 lb 65.75-71.00; 800-900 lb 66.50. Small 1. 300-400 lb 61-62.00; 400-500 lb 51-55.00. Med. and Lge. 2: 200-300 lb 87.50; 300-400 lb 65-79.00; 400-500 lb 62-70.00; 500-600 lb 63-70.00; 600-700 lb 61-69.00; 700-800 lb 60-67.50.

BULLS: 285 head. Med. and Lge. 1: 200-300 lb 94.00; 300-400 lb 79-82.00; 400-500 lb 74-80.75; 500-600 lb 65-78.00; 600-700 lb 62-66.00; 700-800 lb 57-62.50. Small 1: 300-400 lb 60.50-64.00; 400-500 lb 55.00; 500-600 lb 55.00. Med. and Lge. 2: 400-500 lb 65-73.50; 500-600 lb 62-73.00; 600-700 lb 64.75-65.50; 700-900 lb 54-58.50.



Turn Your Gutters Into Virtually **SELF CLEANING GUTTERS** With **Gutter ProTech®**

- .027 Aluminum — Never Rusts
- 20 Yr. Limited Warranty
- 32 Colors Available
- Affordable

SENENIG'S SPOUTING
Call Today For A Free Estimate
265 E. Meadow Valley Rd., Lititz, PA 17543
717-733-7160 - 1-800-247-2107 - 717-627-6886

Room Additions, Sun Rooms, Decks, Garages, Etc.

MILLWAY HOME IMPROVEMENTS LLC

Metal Roofing & Siding
Since 1948

A.B. Martin Roofing Supply
Why Pay More - For Less
BUY DIRECT • WE MANUFACTURE

Roofing & siding in the following
Aluminum • Galvanized • Galvalume
18+ Color Painted, #1 & #2 Material
Low Prices - Fast Delivery, Free Literature
Ephrata, PA 1-800-373-3703
Newville, PA 1-800-782-2712
(formerly Zimmerman Roofing)

DYNA-TECH^{IND.}
Dynamic Technologies

GENERATOR SYSTEMS
1-800-779-8809

Turn Key Systems
Brushless
1800 RPM

Units In Stock

Dealer Inquiries Welcome

6 - 2000 KW
L.P./Nat. Gas/Diesel/Propane
New & Reconditioned

TRACTOR DRIVEN GENERATORS
12-100 KW

DYNA-TECH IND. 24 HOUR EMERGENCY SERVICE
602 E. Evergreen Rd., • MAINTENANCE CONTRACTS
Lebanon, PA 17042 • RENTALS

Phone 717-274-8899
Fax 717-274-8934
Web Site www.dynagen.com
E-mail. sales@dynagen.com

A&C Diffenbach Auction Inc.

100 West Jackson Street • New Holland, Pennsylvania 17557
Office: (717) 355-7253 • FAX: (717) 355-9547
www.auction.net

HAY & GRAIN SALE EVERY MONDAY - 10:00 A.M.

FRI	SEPT 13	TRACTORS, FARM EQ & SUPPLIES	9 00 AM
TUE	SEPT 24	QUILT, CRAFT & BUGGY	9 00 AM
WED	SEPT 25 (?)	QUILT & CRAFT	9 00 AM
WED	OCT 2	WINROSS HESS, FARM CANCELLED DAYS	6 30 PM

EQUIPPED FOR AN AUCTION AT YOUR PLACE OR OURS
ALAN DIFFENBACH AUCT. -AU2258-L