

LANCASTER COUNTY LIVESTOCK MARKET AUCTIONS

Some markets not available because of the holiday

New Holland Livestock Auction

New Holland, Pa.
Report Supplied By USDA
Monday, September 3, 2002

MONDAY	Cattle	Calves	Sheep	Goats
	300	150	728	920
LAST WEEK	378	269	1216	1744
LAST YEAR	176	156	845	876

AUCTION NOT COVERED; FEDERAL HOLIDAY

SLAUGHTER COWS: PERCENT LEAN WEIGHT BULK LOW DRESSING Breakers 75-80 over 1400 lbs Boners 80-85 over 1200 lbs Lean (Hi-Yield) 85-88 over 1200 lbs Lean (Hi-Yield) 85-88 over 1200 lbs Lean (Light-Wt) 85-90 750-1000 lbs

Vintage Livestock Auction

Vintage, Pa.
September 2-3, 2002
Report Supplied By USDA

THIS WEEK	Cattle	Calves	Sheep	Goats
	839	752	7	0
LAST WEEK	912	808	0	2
LAST YEAR	986	808	7	2

CATTLE: Compared to Thursday, slaughter steers sold .50-1.00 lower, with most of the decline on Tuesday's bids. There were not enough slaughter heifers or Holstein steers for a market test. The bulk of the slaughter cows sold steady to weak as bidding was fairly active early, with bids weakening late as buyers filled loads. There were not enough slaughter bulls for a market test. The supply included 49 percent steers and 46 percent cows.

SLAUGHTER STEERS: High Choice and Prime 2-4 1265-1415 lbs 65.00-66.50, fancy singles from 67.00-67.75. Choice 2-3 1200-1430 lbs 63.00-65.50, couple up to 66.25, couple Yield Grade 4 1210-1300 lbs 61.50-62.35. Select and low Choice 2-3 1150-1350 lbs 61.85-63.25.

HOLSTEIN STEERS: Select and low Choice 2-3 few 1300-1450 lbs 53.00-54.50.

SLAUGHTER HEIFERS: Not tested.

SLAUGHTER COWS: PERCENT LEAN WEIGHT BULK LOW DRESSING Breakers 75-80 Over 1400 lbs 39.50-44.50 37.75-39.50 Boners 80-85 Over 1200 lbs 37.75-41.00 35.00-37.00 Lean (Hi-Yield) 85-88 Over 1200 lbs 35.50-38.00 Lean 88-90 Over 1000 lbs 31.75-35.25 28.50-31.50 Lean (Light-Wt) 85-90 750-1000 lbs 29.00-33.50 25.00-29.00

SLAUGHTER BULLS: Yield grade 1 few 1490-1905 lbs 44.25-48.25.

CALVES: Compared to last Tuesday, vealers sold fully steady on a fairly good run. Holstein bulls suitable for special-fed veal barns sold 3.00-11.00 higher. Holstein heifers sold 15.00-25.00 lower. The supply included 591 in the state graded sale, with 92 percent of the supply returned to feed.

VEALERS: Standard and Good 80-125 lbs 30.00-40.00. Utility 45-90 lbs 10.00-30.00. RETURNED TO FARM: Holstein Bulls 95-120 lbs 120.00-154.00; 80-90 lbs 97.00-137.00. Plainer-type bulls 95-115 lbs 112.00-125.00; 83-90 lbs 50.00-105.00, weaker calves 100-105 lbs few 30.00; 92 lbs 30.00. Holstein heifers 93-115 lbs 460.00-555.00; 82 lbs 360.00; 75 lbs 225.00. Plainer-type heifers 93-100 lbs 535.00-550.00; 81-83 lbs 310.00-315.00; 73 lbs 210.00.

Beef-type bulls and heifers 70-130 lbs 75.00-140.00.

Market At A Glance

Lancaster County Livestock Auction Averages
(Price Per Hundredweight)
Week Ending Friday, September 6, 2002
Supplied By Market Staff

	This Wk	Wk Ago	Yr Ago
Steers, Choice 2-3	64.35	65.00	71.15
Heifers, Choice 2-3	NO TEST	64.00	no test
Cows, Breakers, 75-80% lean	42.00	43.00	48.25
Cows, Boners, 80-85% lean	37.85	38.00	44.75
Bulls, YG 1	53.00	54.00	58.00
Hogs, 49-54% lean, Monday	19.00	26.00	43.50
Lambs, Choice/Prime 80-110 lb.	76.00	76.00	76.00

New Holland Livestock Auction

New Holland, Pa.
Thursday, September 5, 2002
Report Supplied By USDA

THURSDAY	Cattle	Calves	Sheep	Goats
	1373	658	509	360
LAST WEEK	1249	627	360	343
LAST YEAR	1303	644	266	251

CATTLE: Compared to Tuesday, slaughter steers sold mostly steady, with higher quality steers trading firm to .50 higher. There were not enough Holstein steers for an adequate market test, however the few on offer sold mostly steady. There were not enough slaughter heifers for a market test. Breaking and boning cows sold steady to weak, with lean cows trading steady to .50 higher on fairly active trading. Slaughter bulls sold mostly steady on a good run. SLAUGHTER STEERS: High Choice and Prime 2-4 1270-1405 lbs 65.50-67.00. Choice 2-3 1175-1440 lbs 63.25-65.50, high dressing

1-2 66.50-71.50, few yield grade 4 1335-1430 lbs 59.50-62.75, few heavy weights 1470-1585 lbs 61.00-62.00. Select and low Choice 2-3 1155-1395 lbs 62.00-64.00, 1510-1630 lbs 56.25-59.50.

HOLSTEIN STEERS: Select and low Choice 2-3 few 1300-1490 lbs 54.75-56.50. SLAUGHTER HEIFERS: Heiferettes: Commercial to Choice 2-4 1185-1460 lbs 52.00-59.25.

SLAUGHTER COWS: PERCENT LEAN WEIGHT BULK LOW DRESSING Breakers 75-80 Over 1400 lbs 39.25-44.25 37.00-39.25 Boners 80-85 Over 1200 lbs 36.25-39.50 34.00-36.25 Lean (Hi-Yield) 85-88 Over 1200 lbs 35.50-38.50 32.00-35.00 Lean 88-90 Over 1000 lbs 31.50-36.00 29.00-32.00 Lean (Light-Wt) 85-90 750-1000 lbs 29.50-34.00 24.50-29.50 SLAUGHTER BULLS: Yield Grade 1 1000-1705 lbs 49.25-57.75, couple 2040-2155 lbs 46.75-47.50. Yield grade 2 1045-1900 lbs 42.00-46.00, low dressing or lightweight 735-1195 lbs 39.50-46.00.

CALVES: Compared to Monday, vealers sold steady to 5.00 lower. Holstein bulls returning to the farm traded sharply

lower in light trading. Holstein heifers sold mostly steady to instances firmer. Supply included 410 in the state graded sale and 87 percent of the supply returned to feed.

VEALERS: Standard and Good 85-120 lbs 25.00-35.00. Utility 40-95 lbs 11.00-25.00.

SLAUGHTER CALVES: Not well tested.

RETURNED TO FARM: Holstein bulls 95-125 lbs 107.00-140.00, mostly 119.00-124.00; 91 lbs 80.00; 87 lbs 45.00; 83 lbs 40.00. Plainer-type bulls 95-125 lbs 75.00-102.00, mostly 80.00-86.00; few 88-92 lbs 50.00; 84 lbs 30.00. Holstein heifers 80-115 lbs few 190.00-410.00, fancy individual 640.00.

SHEEP: Compared to Monday, Slaughter lambs and slaughter ewes sold steady.

SLAUGHTER LAMBS: Choice and Prime 2-3 40-80 lbs 90.00-120.00; 90-120 lbs 70.00-82.00.

SLAUGHTER EWES: Good and Choice Yearlings and 2 year-olds 35.00-50.00. Utility and Good 1-3 20.00-40.00. GOATS: Compared to Monday, kid goats not well tested.

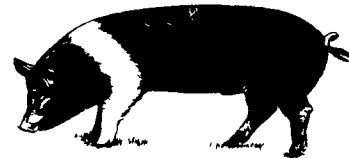
All sold by the head with weights estimated.

Kids: Selection 1 20-40 lbs 25.00-40.50; 40-60 lbs 50.00-55.00.

Yearlings: Selection 1 60-80 lbs 60.00-65.00; 80-100 lbs 70.00-85.00.

Does/Nannies: Selection 1 50-70 lbs 35.00-45.00; 70-100 lbs 50.00-60.00.

Wethers: 50-70 lbs 45.00-55.00; 70-100 lbs 60.00-75.00. Bucks/Billies: Selection 1 70-100 lbs 60.00-80.00; 100-150 lbs 95.00-110.00; 150-250 lbs 115.00-135.00.



Monday Market

We are selling fat cattle and butcher cows Monday, 10 am Private Treaty

Lancaster Stockyards
717-394-7915

QUALITY FEEDER CATTLE

Financing Available

* Fixed Interest Rates • Interest Due when Cattle Are Sold • No Monthly Payments

SCARFF BROS. INC.

Cattle Dealers • Licensed & Bonded
2300 Fallston Road • Fallston MD 21047

Lance N. Scarff
Farm (410) 877-0370
Fax (410) 877-7802
(410) 459-4865

C. Howard Scarff, II
Home (717) 445-4355
Fax (717) 445-7237
Mobile (410) 459-4864

W. Conly Scarff
Home (410) 838-5883
Mobile (410) 790-2650

• Contract Feeding Programs • Marketing of Finished Cattle • Dairy Heifers

B & R CATTLE CO.

RD 1, Marietta PA 17547

Office Phone: 717-653-8164

Specializing in Stockers & Feeders

JOHN BOWMAN 717-653-5728

RON RANCK 717-656-9849

KIRKWOOD HAY AUCTION

Hay, Straw and Grain Auction EVERY TUESDAY 10:00

Located Rt. 472 5 miles south of Quarryville or 6 miles north of Oxford corner of Rt. 472 and Noble Road George Gibney, Auctioneer AU-002534-E No out of state checks

HAY, STRAW & CORN

- SALE -

Sale Starts Every Friday At 10 AM

GREEN DRAGON MARKET & AUCTION

955 N. State St. Ephrata, Pa. (717) 738-1117
1 mile North of Ephrata on N. State St. Out of State Buyers -Cash or Certified Checks Only



Willier, Incorporated

Your Source for Quality Cattle

Licensed and Bonded Cattle Brokers

DAIRY HEIFERS

BEEF CATTLE

HERD DISPERSALS

Inside Pennsylvania: 717-626-3113 FAX: 717-626-1260
Toll-Free Outside of PA: 1-800-485-2233

Bins & Augers

New Broiler Houses needed in the following counties: Berks, Cumberland, Dauphin, Juniata, Lancaster, Lebanon, Mifflin, Northumberland, Perry, Schuylkill, Snyder, Union & York

Other Contracts available call for information
Organic/Natural Egg* Turkeys Hogs Pullets
*New or Converted Houses

Visit our web site

neagri.com

Weather, Info, Links, Specials

FALL Heater Specials



Call For Prices

Flourescent Lights 5-7-9 Watts 5.49 ea.
13 Watts 5.79 ea.
Light Bulbs 25 to 100 Watt Brass Base, 5000 Hrs .39¢ ea. (36¢ Case of 120)

POULTRY LITTER TREATMENT 50 LB. Bag \$13.00
Poultry Litter Treatment Covers 1,000 Sq. Ft.

Authorized Master Distributor Since 1982

Northeast Agri Systems
Flyway Business Park 139A West Airport Road Lutz PA 17543 Ph (717) 569-2702
Delmarva Store 305 University Ave Federalsburg MD 21632 Ph (410) 326-6361
Email@neagri.com www.neagri.com



High Capacity 40" roof (left) allows more storage and stays cleaner than conventional 30" roof (right)



HydroShield® Weather Guard prevents water from running down hopper
ACCESS PLUS® permits easy clean out of the bin from the ground.

Call for pricing on bins assembled and delivered to your farm Complete Bin Size & Capacity Chart On Our Web Page

CHORE TIME Dedicated to PRODUCT LEADERSHIP

Competitive Prices Paid For



- MARKET HOGS
- BOARS
- SOWS
- CULL PIGS

GOOD'S LIVESTOCK, INC.

Monday: 6:30 - 10:30 A.M.
Wednesday: 6:30 - 10:30 A.M.
Friday: 6:30 - 10:30 A.M.



Route 897 • 1 Mile North of Fivepointville, Denver, Pa
(717) 445-5776 • Fax (717) 445-6963