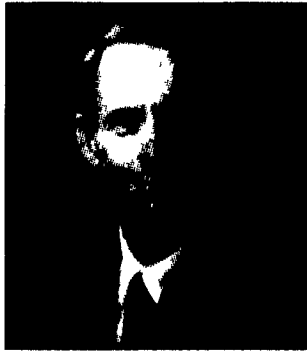


**Farm Show Complex Construction Update**



Hon. Samuel E. Hayes Jr.  
Pa. Secretary of Agriculture

**Building For The Future - On Schedule**

*Editor's note: Written by Pennsylvania Agriculture Secretary Samuel E. Hayes Jr. exclusively for Lancaster Farming, this column provides monthly updates on the exciting new construction under way at the Pennsylvania Farm Show Complex in Harrisburg. Construction is on schedule to be completed for the 2003 Farm Show.*

As one goes by the Pennsylvania Department of Agriculture's massive construction at our Farm Show Complex, a new feature can now be seen punctuating the skyline.

It is different than the long, sweeping roof lines of the new Exposition Hall, new Large Arena, new Livestock Barn, and the new Concourse.

The eclectic design you can see is the peaked-dome of the rotunda, which will greet visitors as they go from the current facility into the new venues. The dome is a very modest reflection of the State Capitol Building and agriculture's important role in public policy.

This dome will not be opulent like the two domes that grace our beautiful State Capitol Complex.

Our peaked dome will not have stately columns or other grand accents. Nor should it. That would be too much, too expensive, and not practical in the Farm Show Complex.

But our small peaked dome and its circular rotunda are nevertheless an architectural expression that will serve as a tie to our state capitol and agriculture's historical and primary role in the department of Pennsylvania.

Agriculture has been a mighty contributor to Pennsylvania's economic, social, and political governance since our colonial period through present day.

The small, peaked dome is translucent and will allow natural light to brighten the rotunda portion of the new pedestrian concourse. It will make it possible for a person to look up to the heavens, which provide Pennsylvania and America with the many blessings of our bountiful agriculture.

Fast-track progress continues to be made in all venues. In terms of the new construction, completion has already been achieved or is within reach before the Pennsylvania Farm Show in January.

As of this writing, the percent-completion for new construction is as follows: new Livestock Barn (100 percent, new Large Arena (90 percent, new Expo Hall (60 percent, and new Concourse (80 percent lower level, 60 percent upper level).

Upgrades within the current Farm Show Complex are also forging ahead. For instance, the upgrade of the current Small Arena is 80 percent complete (new seats, new auctioneer/public announcer block, new enclosed observation deck, and air conditioning). Contractors have "roughed-in" the new 4-H and FFA dormitory/business center and the same is true of what has been referred to as the current Family Living Center.

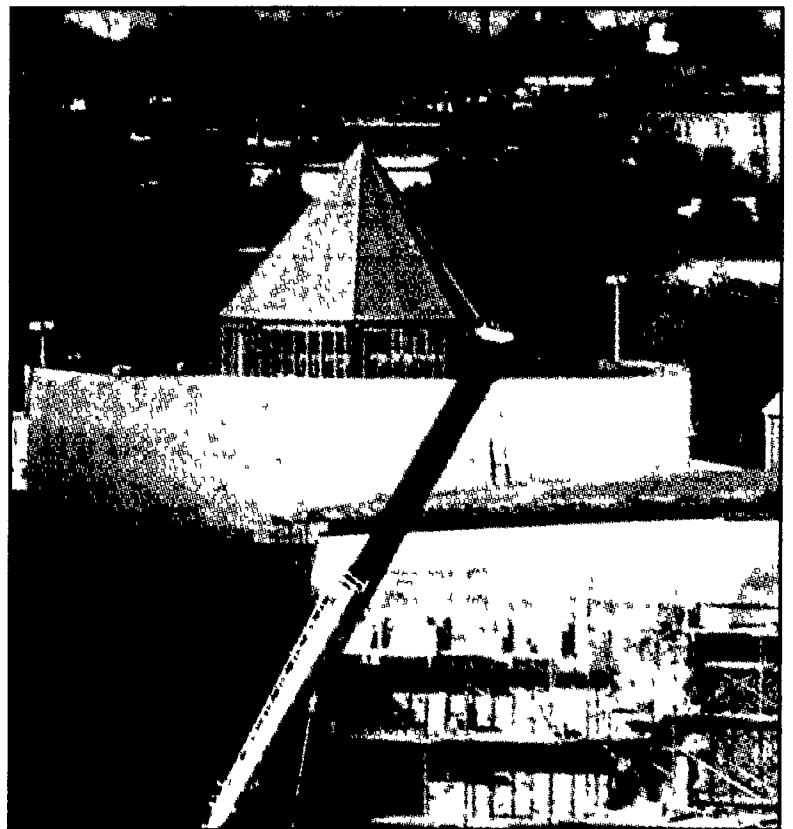
There are 500-700 construction workers of every skill and trade on site each day. They are doing a great job!

In addition to the construction frenzy, we are entering a very busy event season at the Farm Show Complex. It would have been easier to not schedule events during the construction. But we opted to continue our big fall events such as the All-American Dairy Show, Keystone International Livestock Evaluation, Pennsylvania National Horse Show, State 4-H Horse Show, Standardbred Sale, and others. We will achieve both — events and construction, all at the same time.

Construction at the Pennsylvania Department of Agriculture also continues at our new Livestock Evaluation Center. An extraordinary amount of site development work had to be done so this facility will be world-class and the best in the U.S. Steel will be set in the very near future.

Our current evaluation center is 17,000 square feet. Our new Livestock Evaluation Center will be 178,000 square feet (10 times larger).

All of this historic construction at the Pennsylvania Department of Agriculture is for the purpose of building for the future.



The eclectic design you can see is the peaked dome of the rotunda, which will greet visitors as they go from the current facility into the new venues. The dome is a very modest reflection of the State Capitol Building and agriculture's important role in public policy.

**Ag Ed Loan Forgiveness Program Applications Available**

HARRISBURG (Dauphin Co.) — Applications are available for the Agricultural Education Loan Forgiveness Program, benefiting state agriculture and veterinary medicine graduates, until Nov. 16, 2002.

The program, administered by the Pennsylvania Higher Education Assistance Agency (PHEAA), repays up to \$2,000 annually to borrowers of PHEAA-guaranteed student loans for each year the borrower is employed full time in an agricultural-related field. It covers only PHEAA-guaranteed loans, excluding personal and commercial loans, and the borrower is allowed a lifetime maximum of \$10,000 in forgiveness payments.

All eligible applicants must have a degree related to the production of agricultural products or veterinary medicine from a Pennsylvania school or college. Agricultural products include field crops, fruits, vegetables, horticultural specialties, cattle and poultry, timber and wood products, aquatic plants and animals, and any products derived from these. Applicants must also be in their first year of employment or work in the field on or before July 1, 1991.

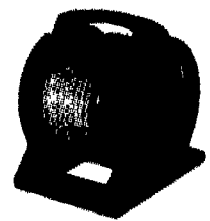
Applications are available by contacting your state representative. Additional information is also available at PHEAA's Website, [www.pheaa.org](http://www.pheaa.org), or by calling toll-free at (800) 692-7392.

**MESSICK'S**

187 Merts Drive  
Rte 283, Rheems Exit  
Elizabethtown, PA 17022  
(800)222-3373 or (717)367-1319  
[www.messicks.com](http://www.messicks.com)



**Power Port Auto Rewind Hose Reel**  
Put an end to your hose storage problems! Easy payout, just grab it and go! Each reel comes complete with 50' of air toll hose and 3' supply hose for connection to your air supply. 300 Psi working pressure.  
**Lifetime Warranty!!**  
Part# HR5038R  
**\$174.95**

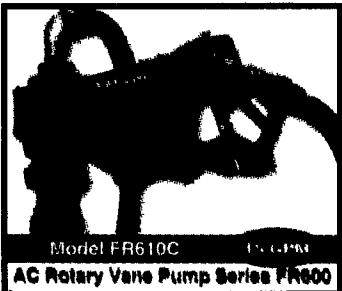


**Power Port Air Tool Hose Caddy**  
End your hose storage problems! Easy to carry, lightweight, less than 25 lbs. Easy payout, just grab it and go! Available in 100' or 150' reels. Comes complete with air tool hose and 5' full flow swivel supply hose.  
**Lifetime Warranty**

3/8 x 100 - HC38100R \$116.95  
3/8 x 150 - HC38150R \$146.95



**AUTOMOTIVE ANTIFREEZE**  
Part# ANTIFREEZE  
**\$4.89** GAL  
**BY THE CASE**



**FILL-RITE**  
Save 10% on our entire selection of Fillrite™ transfer pumps!!



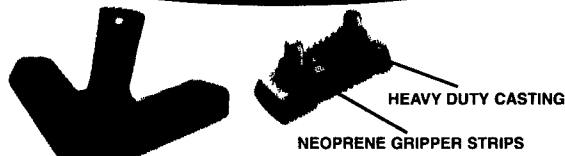
**Fleetguard**

Estimates project that more than 40% of heavy-duty engine repair costs are related to the cooling system. It is critical that you receive maximum protection for your cooling system—with minimum maintenance hassle—to prevent downtime and lower your total operating costs.

Antifreeze/Coolants

Fleetguard® offers a full line of heavy-duty coolant products that provide a clear advantage over competitive antifreeze products by preventing liner pitting, corrosion and scale that can damage your heavy-duty cooling system. ES Complete Extended Life antifreeze/coolants are fully-formulated and contain organic acids that provide superior diesel engine protection. Fleetguard's Universal EG and PG low silicate antifreeze/coolants can be mixed with good quality water and supplemental coolant additives (SCAs) that offer basic in cooling system protection.

Visit us on the internet at <http://www.casecorp.com>  
Case IH is a registered trademark of the Case Corporation



**MAXXI GRIP SWEEP**

PART#	DESC	PRICE	
403376A1	8" X 6 5MM	\$5.98	\$7 47
403377A1	9" X 6 5MM	\$6.23	\$7 79
403378A1	10 5" X 6 5MM	\$6.75	\$8 44

PRICE INCLUDES SWEEP, ADAPTER, AND MOUNTING HARDWARE ASSEMBLED

**CORN HEAD GATHERING CHAIN**

FITS CASE IH AND NEW HOLLAND COMBINE HEADS  
PART# B176279C91



**\$23.95**

Visit us on the internet at <http://www.casecorp.com>  
Case IH is a registered trademark of the Case Corporation