

# MACK ENTERPRISES of READING

4226 Pottsville Pike (Rt. 61) Reading, PA  
**610-781-0926 or 800-485-2556**

**Sales - Parts & Service Hours:**  
 Mon.-Thurs. 7:30-6:00; Friday 7:30-5:00  
 Parts & Shop; Saturday 8:00-12 Noon

**Web Site: www.mackenterprs.com**



**Call Dennis for Isuzu Trucks**



**2000 FRR ISUZU**  
 200 HP Diesel, Auto/Trans, w/14' Morgan Reefer w/Liftgate - Very Good Condition, GVW 19 500 Lbs, A/C, Radio, Cassette Incl



**1999 NPR ISUZU**  
 175 HP Diesel, Auto/Trans, 12' Van Body w/Liftgate, State Inspected, Ready To Go, Gold Star Warranty Available, 14,500 Lb GVW



**2000 NPR ISUZU**  
 175 HP Diesel, Auto/Trans, A/C, 16' Morgan Alum Van Body w/Ramp, One Owner, In Great Shape, 145,500 Lbs GVW



**1997 FMMR MITSUBISHI**  
 200 HP Diesel Turbo, 6 Speed, Manual Trans, A/C, Cassette, 24' Alum Van Body, 25,995 Lbs GVW

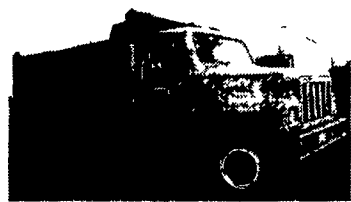


**1995 FORD CF 7000 CARGO**  
 190 HP Diesel, 6 Speed, Manual Trans, A/C, 20' Van Body, Air Brakes, Local Truck - Great Price

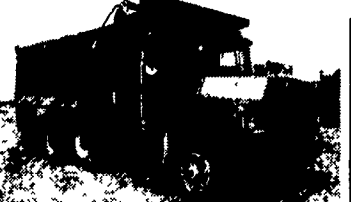


**1988 MACK MS200P MIDLINER**  
 190 HP Diesel Engine, 5 Speed Trans, 18' Morgan Alum Van Body, Good Local Truck At A Very Low Price

**Call Larry for Mack Trucks**



**1985 INTERNATIONAL TANDEM AXLE DUMP**  
 14 Ft Steel Box, L-10 240 HP, Fuller 8LL, Axles 16/40 Cap, Hendrickson Susp, Manual Tarp  
 "Only" **\$9,800**



**1979 MACK DM**  
 15 Ft Steel Box, 237 HP, (2 Stick) 6 Speed, Axles 18/44 Cap, Red, Works and Runs Good  
 "Only" **\$6,500**



**1991 CH613 TRACTOR**  
 This Tractor Can Be Converted to Dump or Flat Bed, Has 160" of Usable Frame Rail, 300 HP, 7 Spd, Axle: 12/40 Cap, Reyco Spring Susp, Air Slide Fifth Wheel  
 "Ready to Work" **\$11,900**



16 ft with Self Storing Ramps Diamond Plate Electric Brakes on both Axles 2 3500 lb Axles Break Away Kit Safety Chain Full 82-in Wide Between the Fenders with Dove Tail



24 ft Gooseneck w/20 ft Deck & 4-ft Dove Tail Electric Brakes on 6000 lb Axles Gross GVW 12 000 lbs Stake Pockets Rub Rail Self Storing Ramps Adjustable Coupler



7 x 12 Gooseneck Dumper 10 000 GVW Self Contained Deep Cycle Marine Battery Brakes on both Axles Steel Bed Adjustable Coupler Stake Pockets Rub Rails



16 ft Equipment Trailer 10 000 GVW Wood Deck 79 in Between the Fenders Drop Axle Stand Up Ramps Channel Fenders Chain Basket



23 ft Long 18-ft Deck & 5 ft Dove Tail Dual Tandem Adjustable Pintle Plate Oil Bath Axles Spring Assist Ramps Break Away Kit



**SINGLE AXLE TRAILERS**  
 6 x 8 \$1 700 6 x 10 1 850  
 6 x 12 \$2 000 6 x 14 \$2 150  
 7 x 10 \$2 370 7 x 12 \$2 545

*Let Us Custom Build Your Trailer*

## Appalachian Manufacturing, Inc.

Phone 330-222-2468 www.appalachiantrailers.com Fax 330-222-2283

## TRUCK TIRES

- Used Truck Tires
- Authorized Cooper Tire Dealer
- Good Supply of Retreads In Stock. Or We Can Custom Retread Your Own Tires To Meet Your Hauling Needs
- Eliminate the Middleman and Buy Direct from our Retread Shop and Save \$\$!
- Our Family Business Has Been Retreading Tires for Over 35 Years

*We Know How To Do It Right!*



## WEAVER'S TIRE SERVICE

Ephrata, PA

Drive On.

**717/733-8775**

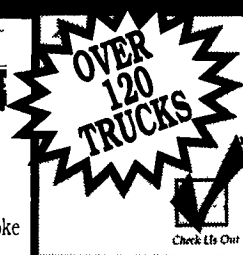


**1984 White Volvo Triaxle**  
 400 Cummins  
 13 Speed, 18F 38R.  
 Double Frame, 24Ft MH Eby Dump Box, Roll Tarp  
 LW#24,500 Lbs  
**\$19,900**

(717) 733-7226



**97 FORD F350 4X4 L-PAK**  
 CONTRACTOR DUMP - AT, Power Stroke Diesel, 82,000 Miles, Green #F2039



Preferred Warranties Available on Most Trucks

# Bobby Gerhart's Truck World

Mon. - Fri. 9-8, Sat. 9-3

2400 E. Cumberland St. Rt. 422 Lebanon, PA 17042 717-273-7995



**99 GMC SUBURBAN 2500 4x4 SLE**  
 AT A/C Most Options 44 000 Miles White #G237



**2000 CHEV. 3500 CREW CAB 4X4**  
 AT, 350 V8, A/C, Cass, 44,000 Miles, Ladder Rack, White, #C641



**97 FORD F-250 4X4**  
 Utility Body, Power Stroke Diesel AT A/C 98 000 Mi, Blue



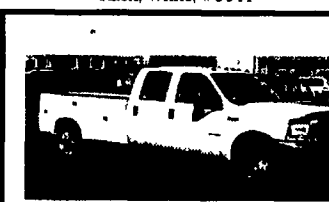
**97 FORD F250 HD 4X4**  
 351 V8, AT, A/C Most Options, 98,000 Miles, Black



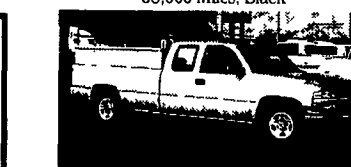
**99 FORD F250 QUAD CAB 4X4**  
 Power Stroke Diesel XLT AT A/C CD Player Most Options 51,000 Miles Blue



**98 CHEV. 2500 EXT. CAB 4X4**  
 Short Bed 6.5 Turbo Diesel AT A/C PL 48 000 Miles White #C567



**2000 FORD F450 CREW CAB 4x4**  
 w/Royal Body, AT, Power Stroke Diesel, Leather, Lariat, 43,000 Miles, White



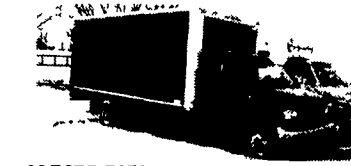
**00 CHEV. 1500 QUAD CAB 2WD**  
 AT A/C 4800 V8 42 000 Miles Silver



**98 INTERNATIONAL 4700 DT 466E,**  
 5-Spd., 14 Ft Stake Body w/Lift Gate, 46,000 Miles, 25,500 GVW, Excellent Condition



**99 CHEVY 3500 CARGO VAN**  
 w/Bin System, 350 V8, AT, A/C, PS, PB 44,000 Miles, White #C618



**98 FORD E350 SUPER DUTY 16 FT. CUBE VAN**  
 Power Stroke Diesel, AT, AM/FM/Cass, 14,000 GVW, 55,000 Miles, Black, #F1095



**90 CHEV. C30 STEP VAN**  
 AT 454 V8, PB, PS, Roof Air, Generator 105,000 Miles, Black/White, #C643



**97 FORD F SUPER DUTY RAMP TRUCK**  
 Power Stroke Diesel AT A/C, PW PL, Black



**2000 FORD F350 CREW CAB DUALY**  
 w/9 Ft. Stake Body 6 Spd 2WD Power Stroke Diesel A/C 59,000 Miles Maroon #F2010



**97 FORD F350 CREW CAB 4X4 XLT**  
 Power Stroke Diesel AT A/C, Most Options 45,000 Miles, Gold & White



**2000 GMC 3500 9 FT. FLAT BED**  
 454 V8 5 Spd, A/C AM/FM 47,000 Miles Black



**1995 FORD F350 4X4 9 FT. STAKE DUMP**  
 Power Stroke Diesel, 5 Spd, XLT, A/C, C, T PL, PW, Red, 75,000 Miles, #2007



**95 CHEV. 3500 EXT. CAB DUALY**  
 2WD AT 6.5 Turbo Diesel A/C Most Options 84,000 Miles White, #C625 (5 Ext. Cab Dualys In Stock)



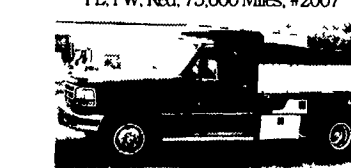
**97 GMC TOPKICK 6500**  
 CAT Diesel Allison Automatic 26 900 GVW Rear Sofa Bed and Sleeper Conversion Both Hitches Ready to Tow COME & GET IT! #G235



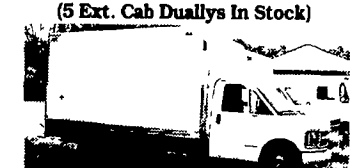
**99 FORD F350 9 ft. FLATBED**  
 w/Gooseneck 5 spd Triton V 10 XL Tmm A/C 68 000 Miles Dk Green #F2022



**99 GMC 3500 CREW CAB DUALY 9 FT. FLATBED**  
 w/Both Hitches 454 AT PS PB A/C 29,000 Miles White Perfect Condition! #G233



**95 FORD F350 CONTRACTOR DUMP**  
 XLT 5 Spd A/C V8 C PW 77 000 Miles Red #F2004



**99 CHEV. 3500 14 FT. CUBE VAN**  
 AT A/C 350 V8 67 000 Miles White #C642



**90 FORD F350 CREWCAB DUALY**  
 AT 460 V8 XLT over 100 000 Miles A/C Most Options Looks & Runs Good Maroon #F2021