

35 TRUCKS AND TRAILERS

'90 42 ft Timpfe hopper bottom grain trailer, roll tarp, Budds, v.g. cond, \$10,000. 717-534-1253

'96 Ford XLT Ranger short bed, 4 cyl, 5 spd, PS, PB, air, AM-FM cassette, new radials, 69,000 miles, black, \$4,275. 717-733-2873

'97 Chevy Cheyenne 2500 w/8' Reading utility body, 350 auto, PS, PB, air, 8600 GVW, 80,000 one owner miles, new radials, red, \$12,500. 717-733-2873

'98 Chevy Cheyenne 2500 HD, 3/4 ton, 350 auto, PS, PB, air w/8' alum. flat bed, fold down sides w/ loading ramp, 31,000 miles, excellent condition, \$11,500. 717-733-2873

'98 Dodge 1500, short whl. base, 8 pass., 3.9 V6, auto, PS, PB, PW, PDL, cruise, tilt, air, AM/FM Cass., 39,000 miles, \$10,500. 717-733-2873

99 VW Jetta TDI, 1 owner, 59K miles, 5spd w/air, serviced & inspected. Priced to sell. 877-965-0290.

'97 Chevy Cheyenne 2500, extended cab, 2WD, 350 auto, PS, PB, cruise, tilt, air, AM-FM Cass., towing package, 8,600 GVW, 63,000 one owner miles, \$11,900. 717-733-2873

Drop deck trailer, 24' deck on tandem axle, \$3000. 610-933-0991

Eager Beaver Tagalong, 1990, 20T air brake, 8 new tires, VG cond., never hauled over 10T of equip., \$7,500. 410-557-7387.

Insulated Morgan truck body w/reefer unit, elect. standby, exc. cond., rear swinging doors, \$3995. 717-442-9208

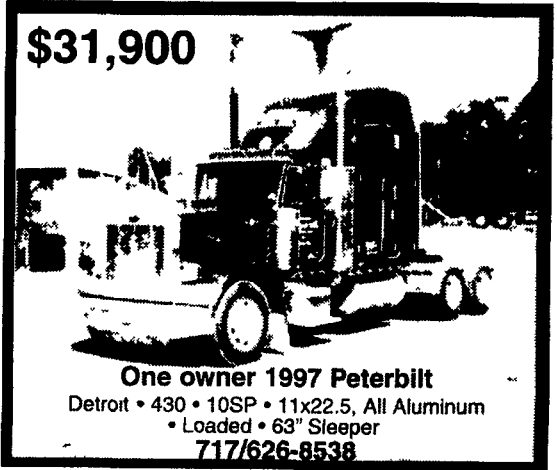
12-Passenger 1989 Chevy Beauville light blue van, garage kept, rust free body, 6.2 dsl, dual air, tinted windows. Good cond. w/210k mi. \$2500. 570-837-5056

1992 Ford Cargo 7000, 22' Danco rollback, 20,000 mi. 1989 Mack Midliner, 20' Eby alum. cattle body, 59,000 mi. Both 1-owner trucks. Days 908/879-5851, cell 908/432-1990

1984 Utility 28' reefer van trailer, runs good, \$3900. 610-921-1955

'98 GMC SL 2500 extended cab, 4x4, 350 auto, PB, PS, cruise, tilt, air, am-fm cassette, 8,600 GVW, new radials, red, excellent condition, \$15,900. 717-733-2873

FOR SALE:
85 EAGER BEAVER TRAILER
8x16 Deck w/4.5' beavertail & ramps.
Frame sandblasted & painted, new tires,
new elec. brakes, new 2" deck.
\$6,500 neg. 610-383-7042



USED TRAILERS



- 20' Skid Steer Trailer, 77" between fenders, needs brake work \$1,500
- 24'x102" Deck-over Tilt Flatbed, hydraulic tilt, 10,000 lb. GVW \$3,000
- 8'x12' Burkholder Deck-over, 10,000 lb. GVW \$1,800
- 8'x15' Deck-over 3' stake sides 7,000 lb. GVW \$700
- 8'x16' Deck-over 3' stake sides, 10,000 lb. GVW \$1,800

LANCHESTER TRAILER SUPPLY
3220 East Gordon Rd
Gordonville, PA
717-768-0663
sales, service, parts, installation

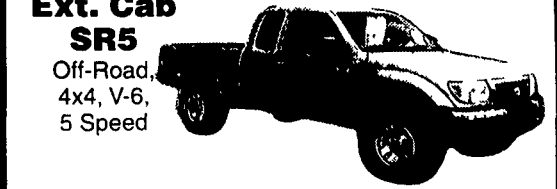
THE HONDRU EXPERIENCE

OVER 200 TRUCKS AVAILABLE FROM OUR 4 DEALERSHIPS

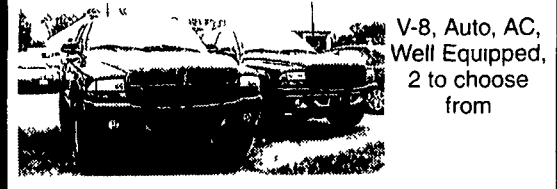
E-TOWN CHEVROLET

Oldsmobile Pontiac
Route 230 E-Town • 717-361-7776
877-924-6644

2000 TOYOTA TACOMA



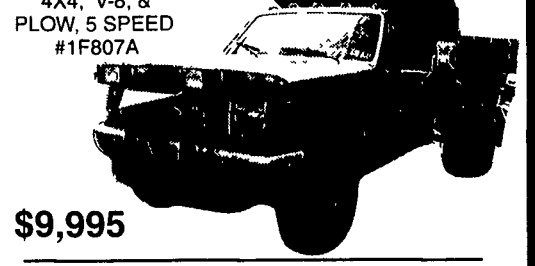
99 DODGE DURANGO SLT



PHILLIPS FORD

Route 72 Manheim • 717-665-3551
877-597-3551

1991 FORD F350 DUMP



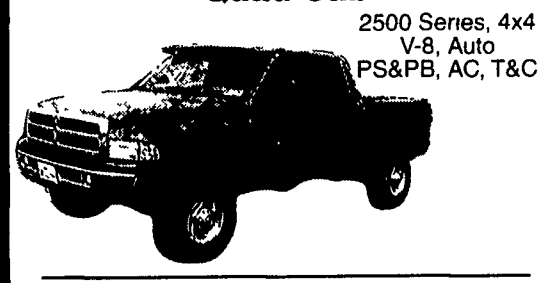
92 CHEVY 3500 DUMP



E-TOWN DODGE

Route 230 E-Town • 717-367-6644
877-924-6644

2001 DODGE RAM Quad Cab



98 Dodge Ram 1500 SLT, Club Cab, 4x4, V8, Auto, Equipped.

01 Dodge Ram SLT, Reg Cab, V-8, Auto, AC, PW&L, PS&PB, T&C, Off Road Pkg

00 Ford F150 4x4 Off Road Pkg, SLT 5 4L V-8, Quad Cab, Well Equipped.

99 GMC Sierra Club Cab, SLE, 4x4

All prices include Rebates, Exclude Tax, Tag and \$55 Dock Fee

MANHEIM CHRYSLER GMC

Route 72 Manheim • 717-665-2473
877-603-2473

95 CHEVY G30 SPORT VAN



	LIST	SALE
92 Chevrolet S10 Pickup 2214A	\$6,995	\$4,995
00 Dodge Caravan 2217A	\$15,995	\$12,995
97 Chevrolet Venture 2G199B	\$10,995	\$8,995
01 Ford Expedition 4x4	\$28,995	\$26,995
99 Pontiac Montana 2G308A	\$14,995	\$12,495
01 Ford Explorer SPO 2G318A	\$21,595	\$18,995
98 Chevrolet C/K 1500 2G322A	\$18,495	\$15,495
00 Lincoln Navigator 2G323A	\$30,495	\$28,495
98 Plymouth Grand Voyager 2M033A0	\$13,495	\$11,495

LOADS OF USED PICKUPS CALL ANY STORE FOR DETAILS
Visit us @ www.hondruauto.com
OVER 10 CHASSIS IMMEDIATELY AVAILABLE FOR BODY INSTALLATION AT OUR LOCAL BODY COMPANIES!

HOSTETLER Truck Bodies & Trailers
717-667-3921
Milroy Exit off Rt. 322
Between Lewistown & State College

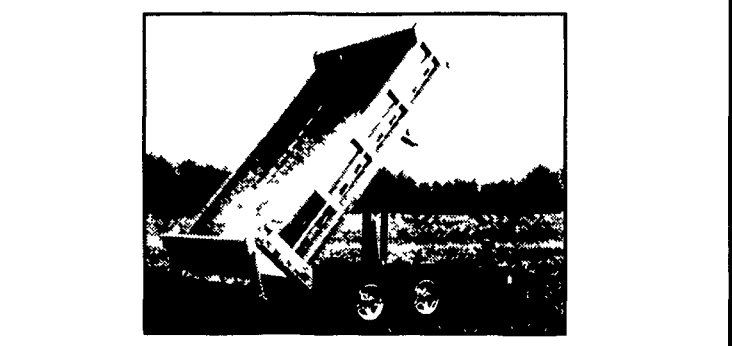
Toolboxes Steel & Aluminum Above Body and Under Body Call for Prices & Sizes

Corn Pro & Moritz Gooseneck Flatbed Trailers, Any Length Any Weight Available

Hostetler Silage Body

Moritz Bumper Pull and Gooseneck Livestock Trailers, Treated Floor Torsion Axles, Electric Brakes, 6 Different Colors

FEATURE PRODUCT
New From Hostetlers Aluminum Heavy Duty Dump Trailer



20" Sides 26" Front & Rear 3/16" Alum. Construction, 6 Ton Scissor Hoist, 10,000 # or 12,000 # GVW
CALL FOR DETAILS

Pace American Enclosed Cargo Trailers, Single & Tandem Axle, Double Doors or Ramp Doors, Side Doors, Torsion Axles

Standard & Low Profile Dump Trailers, Various Sizes & GVW's, Electric Hydraulic Hoist, Many Options & Colors Available

Contoured and Standard Service Bodies, All Size Trucks Designed Around Your Needs

Corn Pro Steel Livestock Trailers, Torsion Axles, Treated Floor, Many Sizes and Features Available

Utility Trailers, Single & Tandem Axle Tilts, Ramp Gates, Treated Floor With & Without Brakes, Various Lengths & Widths

Gooseneck Bodies in Steel and Aluminum Installed or Cash and Carry

New From Moritz - "V" Nose Walk Thru 2 Horse Trailer, Full Padding, Matting w/Ramp Or Step-Up

Eby Aluminum Livestock Trailers, Bumper Pull or Gooseneck, Torsion Axles, All Sizes and Configurations Available