

32 MISCELLANEOUS

Butcher Boy, 14 inch bandsaw, \$525. US Berkel slicer, \$385. Lanc Co. 717-786-7398

1000 gal. above ground steel fuel tank on metal skids, 110V electric pump w/hose, \$750. Gettysburg 717/334-5511 7am-4:30pm

285 65 16 BF Goodrich Tires, 1/2 tred, mounted on center line. 16x8 Rim, 8 lug. Will separate. \$650. Weather guard tool box, never used, \$125. Leb. Co., 717-821-1283. Dan.

20-25 acres timber & firewood trees. 570-386-2107.

LP gas Kohler generator w/panel box, 62.5 amp, kw 15, good cond., \$1200. 717-432-8403

Cabots, Olympic, Minwax Stain. Lg quantity ava., \$2/Gal. Quantity Discounts! Lg qty of calking also. Clear plastic sheeting, all size rolls, Cheap! Call for list, 610-909-0556.

Wood heat. Clean, safe & efficient Central Boiler OUTDOOR WOOD FURNACE. Heats multiple buildings. Available in carbon steel & titanium enhanced stainless. Kenneth Stauffer, 570/539-4606, 888/539-4606

Wild Cherry Wood in the rough, atleast a PU load. \$1.50/board ft. OBO. 717-653-8412. lve msg.

Fence kote, black, preservative, Wolman brands, Cabots wood brightener \$2/gallon, 300 gallons avail., 610-909-0556

Outdoor wood or oil furnace 100,000 BTU or higher. 610-682-0837

Gear Machine Shop. Still operating. Would like to retire the complete shop or indiv. machines. Make offer. Tom, 610-364-3441.

Cast iron radiators for sale, \$350-\$450, 717-444-3889 evenings

US Military industrial metal lathe, 16" x 6'. #1-M Cincinnati milling machine, horizontal & vertical. 717-567-3562, 717-580-8788

Grocery store equip: freezers, cases (meat, dairy, produce) & compressors, Hobart 5hp grinder & meat saw, heat wrap table, elec. grill, elec. fryer, 8dr 21' wall freezer, generator (35kw gas), (2) 3 burner coffee makers, check-out tables, cash registers, shelving, Secty Sys. 610/587-6820

Pearson 1014 metal shear, 1/4"x10' capacity, w/Imperial back guage, good machine. 814-793-1868.

Antique kitchen stove coal/gas w/top warming oven made by Floyd Wells Co., Royerford, PA. Ex cond \$800. 973-875-4506

33 RECREATIONAL VEHICLES

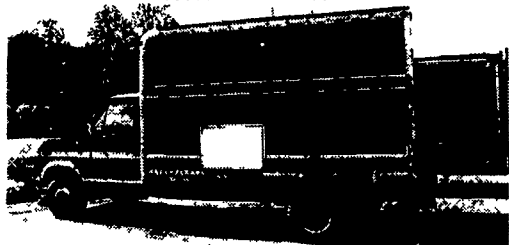
Yamaha Big Bear 350, 800 miles, like new, \$3000. EZ GO golf cart, gas, clean, \$800. 570-427-4749

'85 Coachman 29' travel trailer, exc. cond., air, bath, shower, lots of storage space. Call for details. \$4800 OBO. 717/867-4117

2001 Honda Rancher ES ATV, 330cc, 4x4, elec shift, \$3950 OBO. 610-286-6539

34 AUTOS

'00 Chevy Malibu LS, 4 dr, 3,100 V6, auto, PS, PB, PW, PDL, cruise, tilt, air, AM-FM cassette/CD, 23,000 one owner miles w/balance of factory warranty, black, \$9,900. 717-733-2873



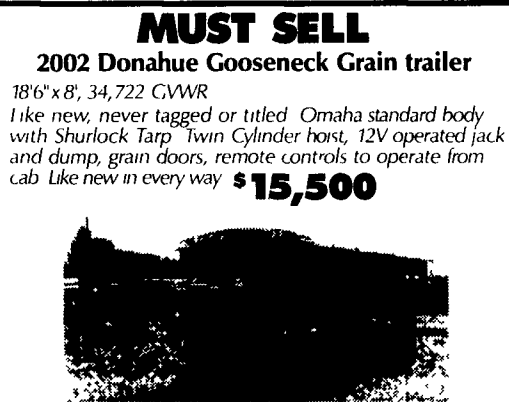
1988 Ford Step Van, Gas, Auto., 10,700 GVW, 12' Box, Alum. Ramp, \$2,500
Call Joe, 610-358-5240



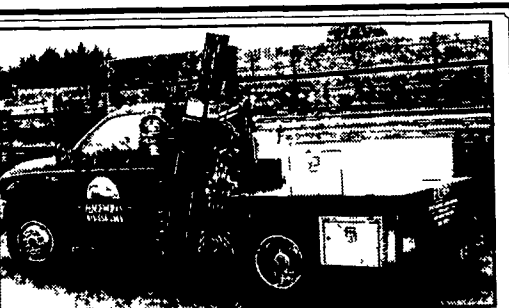
1987 T800 KW
 400 Big Cam Cummins, 8LL Trans., 4:11 Rears, 20,000 Lb. Front, 15' Steel Dump, 269,000 Miles, Excellent Condition.
Asking \$19,500 Price Reduced
717/987-3583, 717/987-3761



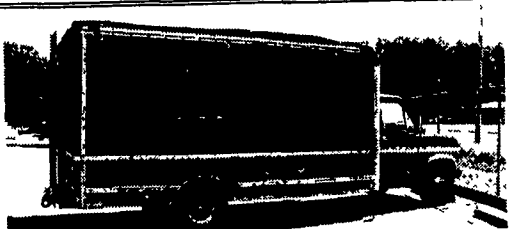
1988 Chevy Bucket Truck
 rebuilt motor & trans, auto, good cond
\$4,500 570-724-5500



717-529-2782



POST DRIVING TRUCK
 2001 Ford F-450XL w/Kiwi Post Driver, custom build bed w/weather guard boxes ready to install fence. **\$39,000**
610-558-3339



1984 Ford Step Van, Gas, Auto., 10,000 GVW, 14' Box \$1,500 Call Joe **610-358-5240**

P.T.S.
 Lititz, PA
 SCH (717) 626-3039 N. PA
 (717) 949-3246

By mail 11 East 28th Div Hwy Lititz, PA 17543
Pierce's Trailer Sales
 Authorized Dealer for
MONARCH, MORITZ, PA INTL.
 thoroughbred horse trailers, stock trailers, utility, dump, flat-bed, and equipment trailers

POLICE VEHICLE FOR SALE
 The Board of Supervisors of the Township of South Heidelberg, 68A N Galen Hall Rd, Wernersville, PA 19565, 610-678-9652, will receive sealed bids for the sale of a 1995 Chevrolet Blazer until 10 00 AM prevailing time on September 19, 2002

Envelopes containing bids shall be marked "Bid for 1995 Chevrolet Blazer." Bids will be publicly opened and read by the Township Manager assisted by the Township Clerk at 11 00 AM prevailing time on September 19, 2002 Bid results will be reported at the Board of Supervisors meeting at 7 00 PM prevailing time on September 19, 2002 Bids shall be accepted on the condition that full payment of the purchase price shall be made immediately upon acceptance of the successful bid The Township reserves the right to reject any and all bids

Dean Baim
 Secretary

LEED TRUCK CENTER
 402 South Chiques Rd
 Salunga Exit, Route 283 **717-898-1200**

1986 GMC VANDURA 3500, V8 A/T P/S P/B 8600 GVW with Scott Air Reeler Unit & Van Pkg New Comp & 134A Freon Ins CLEAN
Reduced To \$3,500

1991 IHC 4900, DT466 5 Spd P/S Hyd Brakes 16 Morgan Reeler Body with TK MD 11 Cycle Sentry with Insp VERY CLEAN
Priced To Sell!

1989 IHC S1954, DT466 Turbo Diesel 10Spd P/S A/B 30 000 GVW 16 Hackney Reeler Body with Carrier Refrig & Stdby
Priced To Sell!

1982 FORD F700, 10 Dump Truck 370 V8 Gas A/T P/S Hyd Brakes 26 000 GVW No CDL Needed Insp Clean
Priced To Sell!

TRUCKS

FORDS
 96 F-250 Ext Cab XLT, Auto, 96K Miles
 96 F-350 Crew Cab XLT, 5 Spd, 121K Miles
 97 F-350 Crew Cab XLT, Auto, 172K Miles
 99 F-350 Crew Cab XLT, Auto, Dually, 52K Miles
 00 F-350 Crew Cab XLT, 6 Spd, SRW, 90K Miles
 01 F-250 Crew Cab XLT, Auto, 14,800 Miles
 01 F-350 Crew Cab Lariat, Auto, 30K Miles

DODGES
 92 250 Ext. Cab LE, Auto, 204K
 93 3500 Ext Cab LE, 5 Spd, Dually, 290K Miles
 98 2500 Quad Cab SLT, Auto, 101K Miles
 99 2500 Quad Cab SLT, Auto, 85K Miles
 01 2500 Quad Cab SLT, Auto, 123K Miles
 01 2500 Quad Cab SLT, Auto, 39K Miles
 02 3500 Quad Cab SLT, 6 Spd, 63K Miles

All Vehicles Have Been Serviced, Insp., Car Faxed, Detailed - No Reasonable Offer Will Be Declined.

McNamara Cars & Trucks
 Dennis McNamara • 2 miles South of I-78 on Rt 61
877-965-0290
 www.mcnamaratrucksrus.com

New Open Car Trailer \$1,499
 7,000 lbs GVW, elect brakes, with ramps that slide out from under diamond plate steel runways
4x8 Utility Trailer \$399 • Car Dolly \$699
302/368-9534
 Newark, Delaware

1980 GMC General, 3208 Cat, 5 spd auto, 19' silage bed w/electric tarp, 15 ton hoist, bed new in Mar. '02, inspected, using in fields now. \$21,500
Phone 814-793-3439

2000 Peterbilt 379L 500 Detroit 10 Speed 370 Full Locking Rears LOADED \$67,000 - OBO
1998 Fruehauf 1000 CF Air Ride \$32,000 - OBO
610-593-1198

NOW IS THE TIME TO BUY YOUR TRAILER! SEE US AT BINKLEY & HURST!
 Place Your Order Now and Be Ready For Spring - Good Financing Plans!

Binkley & Hurst Bros. Offers....
Eager Beaver DISCOUNT SALE ON NEW 20-TON HIGH TENSILE TRAILERS

Eager Beaver IT PAYS TO OWN THE BEST!

NEW 20 XPT EASY LOADER IN STOCK
 20 Ton Air Brakes, 8° Loading Angle Low Profile
 • CAPACITY 40,000 lbs • Trailer Weight 8,400 Lbs
 • Overall Width 102", Length 31'4"
 • Deck Width 102", Length 25', Height 34" (Optional 96" Width)
 • Ramps 72" Long x 21-1/4" Wide Range 102" Max 23" Min
 • Tires Eight 215/75R17 5 (H) Optional Aluminum Extension Ramps (shown)

In Stock

The Complete Line of Eager Beaver Trailers

Also 10 ton with Air Brakes and 10 ton with Electric Brakes Just Arrived

BINKLEY-HURST BROS. INC.
 133 Rothsville Station Rd.
 P.O. Box 0395, Lititz, PA 17543-0395
 (717) 626-4705 1-800-414-4705 Fax (717) 626-0996