



**1A CONSTRUCTION EQUIPMENT**

Case 4390 engine, like in backhoes & crawlers, 800 hrs, \$3250. 610-932-5576

Daffin Ready Mix concrete plant, self contained, on trailer, \$2750. 610-932-5576

Komatsu Track Loader D668, good cond., \$17,000. Hunterdon Co., 908-754-6678.

Cat 440C forklift, K-20 Cletrac. (2) blacktop rollers, (1) vibrates. 570-345-4882

1976 D5 LGP dozer, 12' blade, good cond, \$18,000. 717-548-2734.

1987 Cat 953, 9800 hrs, pads rebuilt, P&B just turned, new sprockets, \$36,000. 717-548-2734.

84 Case backhoe 580 Super E, average cond., good rubber, runs & works good, \$10,000. 717/792-2751

'97 Bobcat 325 mini-excavator, rubber tracks, \$13,500. 717-859-3501

Caterpillar 953 Crawler Loader w/cab \$23,000; Caterpillar 955L Crawler Loader \$17,000; Caterpillar 955K w/rippers & rebuilt eng. \$15,000; Komatsu D66S Crawler Loader \$18,000; MF500 Crawler Loader \$5,000. Heavy Equip Loader Parts, Rt 22, Grantville, Pa. 717-469-0039.

Wheel Loaders 1992 Caterpillar 966F \$60,000; Caterpillar 930 w/rebuilt eng. \$23,000; Caterpillar 920 w/rebuilt eng. \$18,000; Caterpillar 966A \$8,500; Caterpillar 944 w/rebuilt eng. \$8,000; Terex 7231 \$7,500; 4x4 Loaders avail for Sale or Rent. Heavy Equip. Loader Parts, Rt 22, Grantville, PA 717-469-0039.

Excavator Hydraulic Caterpillar 215 w/thumb, \$18,000; Caterpillar E70B \$16,000; LinkBelt 265CII w/new BTM rollers \$20,000; JD 490 w/rebuilt Hyd Pump \$18,000. For Sale or Rent. Heavy Equip. Loader Parts, Rt 22, Grantville, PA 717-469-0039.

Dozers Crawler/Caterpillar D9G w/ripper \$25,000; Caterpillar D5CII, Hystat \$48,000; Caterpillar D5C LGP \$35,000; Caterpillar D6H \$59,000; Sale or Rent. Heavy Equip. Loader Parts, Rt22, Grantville, PA. 717-469-0039.

1978 Ford bckhoe, runs well, \$4500 OBO. 1975 24' Dmp trlr w/new fir, \$3000 OBO. D7 Dozer serial #17A, runs & operates, \$3500 OBO. 1973 TS24, Terex Pan, \$32,000 invested, new motors, trans., etc. Will sacrifice, \$25,000 OBO. 717-379-3140 or 717-589-3017.

Eversman 600 hyd. pull type, tan, serial #6003449, good cond., 100+hp, tractor needed, \$4000. 717-532-3360.

Bobcat #65 Mini excavator, Komatsu Diesel pwr., steel tracks, 3000lb., \$6,500. 717-532-3360.

'88 980 Bobcat w/ Grappler attachment & hard tires, 6000hrs, \$7,999. 610-566-8067.

Asphalt recycler, diesel powered, grinds up asphalt, portable, \$15,000 OBO. 301-475-3651

Komatsu track loader D66S, roll guard, cab, overall good cond, \$17,000 OBO. Hunterdon Co, NJ, 908-754-6678 after 6pm.

Bobcat 450 skid steer loader, 18hp, gas, 500 hrs, \$6500. 215-357-4420

4000lb Ingersoll Rand Over Head Air Hoist, VG cond., \$800. 717-354-2188.

2000 JD 260 Skidloader, 420hrs, e-cab, heat, filled tires, \$18,500. New Mulch bkt for JD or NH, \$1,500. 301-371-9346.

AC HD6B Bulldozer w/10' Angle blade plus 2 extra blades, 8' Straight & 8' Root/Rock Ripper, \$8,500 OBO for all. Digital photos ava. Call 610-346-8465.

Coates 4040SA air operated tire machine, Rover topsoil screener, needs work; Cat 955 track loader, diesel, pedal steer, cab. 908/659-3414

'98 Bobcat 331 mini excavator, 1574 hrs, \$15,000 obo. 717-332-9806, 717-225-7258

1993 Finn hydroseeder T90, Kubota dsl, 900 gal, hose reel, tower, skid mount, needs engs work, \$7000. 717-354-4947, 717-629-2844

JD 555 4N1 Lkt, good U/C, rebt trans & eng sleeved, \$17,500. 540-338-6335

JD 350B crawler, front loader, good running cond, \$5000. 717-354-6706

Kinn firewood processor, JD dsl, shear style, up to 16" cap, mechanically OK, asking \$10,000. 717-362-2988.

1997 Takeuchi TBO15 & TBO20 mini excavators, \$7900/ea. 1998 Bobcat 863 skid loader, new tires & bucket, \$10,500; JD 555 crawler loader w/ backhoe, \$9800; JD 755 crawler loader, good UC, \$14,500. 717-859-3501

Rough Terrain Forklift, Pettibone Super 6, runs but needs work. \$3,300. 717-529-2268.

10x46 job office trailer, exc cond w/gas heat, \$1,450. 717-464-4461.

1996 JD 482C, Ruff Terrain Fork Lift, 4x4, 21' lift, side shift, see thru mast, 5000 lb., 2600 hrs, tires 100% exc cond, \$23,500. 856-769-0787.

Generator 30KW Onan power plant, 162 hrs, LP or nat, 3 phase, Delta, serviced, ready for use, \$5900 obo. 484-256-1359

CAT 931B Crawler Loader, 4000hrs, exc cond., \$14,000. 570-752-7131.

Clark forklift, 4,000 lb, air tires, LP gas, good condition, asking \$3750. 717-354-4996.

1978 Autocar triaxle dump truck, 16' steel bed, 290 Cummins eng, new WB bushings, new king pins & bushing, good shape, works every day, \$12,000. 717-944-7277.

JD TLB 510D, cab, 4x4, ext hoe, 5,000 hrs, ready to work, \$27,000 OBO. 717-284-0303, 717-786-2275.

'77 Chevy C65 Dump \$6500; 12T trlr \$4500; 60' manlift \$15,000; Rayco stump grinder \$3000; '78 Dodge dually 4x4 w/plow \$2250; Ford 801 tractor \$3000; Vermeer 1800A chipper \$22,000. Going out of business, must sell all. 717/949-2332

175B crawler/loader for parts or whole, has good 4n1 bucket, rebuilt eng. 717-862-3970.

'79 Chevy C70, 33,000 GVW, dump truck. '79 Int 100E loader. '96 10 ton Hudson trailer. All in excellent condition \$28,000. Will sell separately, 717-533-6117.

Dresser 125E crawler loader w/forks, sawdust bucket & winch, new U/C, exc cond, \$20,000. 716-761-6360.

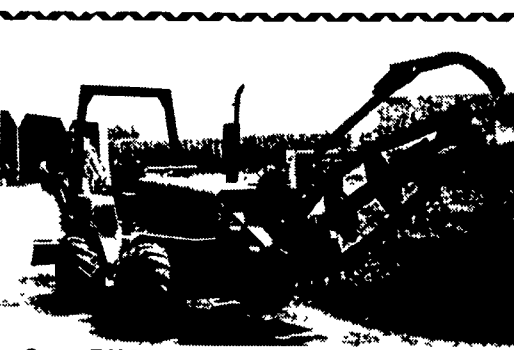
CAT 980C 1989, quick chg bucket, A/C, reg maintenance, foam tires, \$40,000. 410-358-9730 443-570-1188.

**FINN HYDROSEEDER**

1700 Gallon, 1015 Hours, 80 HP John Deere Diesel, Overhauled in 2001, Fabricated to be Placed on or Off Truck No Need to Tie Up Truck  
**\$19,400**  
**610-721-7707**



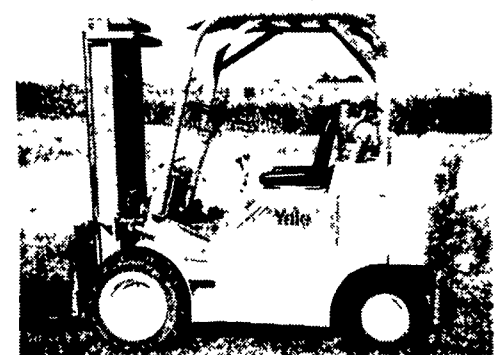
Clark C500Y100, 10,000 lb capacity, Pneumatic, SNY6851084845 LPG, 2 speed auto, mast 96 down/140 up, 48" forks, P/S, strong machine  
**C. Betz Forklift Sales & Service**  
**717 • 485 • 0410**



**Case DH4 trencher/backhoe, recon diesel engine & hydro, repainted, rock teeth, 4 WD, 2 buckets, \$11,900 OBO**  
**717-530-0170**

**LTM Equipment Co.**  
**717/949-3582 Myerstown, PA**

We buy, sell, and repair used equipment. Most Trades Accepted.



Yale 8,000 lb. Pneumatic, With a Perkins diesel 84-120 mast, 48" forks \$3,800

**USED & NEW PARTS PRICED RIGHT**

**DISMANTLING**

Cat	IHC	Galion
Case	Michigan	Wabco
John Deere	Hough	Dynahoa
Trojan	Terex	Koehring
Drott	Hein Werner & Others	AC/Fiat Allis

Dismantling Over 650 Machines For Parts

**NATIONWIDE PARTS LOCATING SERVICE**

In addition to our own large inventory, we have two computerized parts locator services, nationwide & Canada, ready to serve you. In less than a minute, over 600 used & new parts & equipment suppliers will receive your parts request. Parts are located easily & at substantial savings. Try Our Services

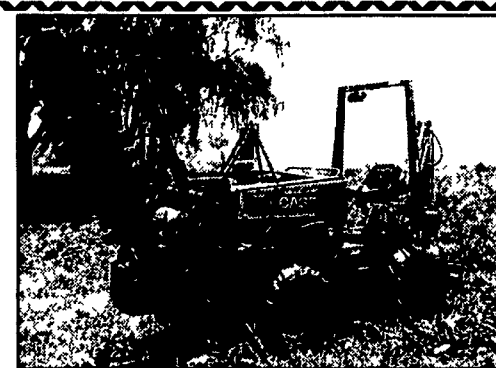
Save \$\$\$ Parts Shipped Anywhere Direct To You. All Parts Guaranteed.

**"We Return All Phone Calls"**

**BALANDA EQUIPMENT, INC.**

P.O. Box 407 • Route 29 • Palm, PA 18070  
Phone 215-679-3900 • Fax 215-679-8727

**TOLL FREE: 1-800-322-8030**



**Case 360 Trencher, Backhoe, Rock and Frost Teeth Diesel, 1761 hrs., \$9,800 OBO. Call (717) 866-1676 or Leave Fax**

- Cat D-6C Dozer, Full Cab, Straight Blade w/ Tilt, Good Bottom, Excellent Appearance, Recent Powershift, Steering, Clutches and Brakes, Needs Final Drive Work **\$9,500**
  - 9 Ton Interstate Trailer, Tandem Axle, Elec Brakes, Good Condition - Needs Paint Used only for Rubber Tire Equipment **\$2,500**
  - Model 764 Ford Backhoe Attachment for 345-545 Series Industrial Loader Tractors or Could be Adapted to Larger Skid Loader, Excellent, Only Used 6 Hours, Digs to 10 1/2 Feet, Weight 2,800 lbs **\$3,500**
- (610) 827-7244 Chester Co.**

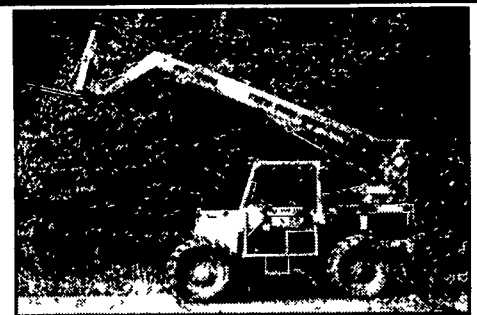


**Cat 941/951 CRL Loader**  
**8 Crawler Loaders To Choose From**  
**Sale Or Rent**

**Heavy Equipment Loader Parts, Inc.**

10070 Allentown Blvd, Grantville, PA 17028

**No Sunday Calls (717) 469-0039**



**1994 Traverse Telescopic Forklift**  
4 x 4, 4 wheel steer, 34' reach, JD Diesel  
**\$24,900**

- 1996 1845C Case Skidloader 1600 hrs., new rubber. . . . . \$12,000
- 1993 853 H Bobcat Skidsteer, good cond., Aux Hnd., 2000 hrs, . . . . . \$9,800
- Brand New 73" Dirt buckets . . . . . \$575

**717 • 629 • 2660**

- #8532 Case 580SL Loader Backhoe, 2000, 4wd, Cab, Ex 1200 Hrs . . . . . \$42,900
- #8514 Case 1838 Unloader, 1994, utility bkt, 1650 Hrs . . . . . \$8,900
- #8534 Case 1840 Unloader, 1996, Aux Hyd, Drt Bkt 2400 Hrs . . . . . \$12,900
- #8536 Case 580SK Loader Backhoe, 1994, 4WD, Cab, Ex 4400 Hrs . . . . . \$24,900
- #8533 Case 580K Loader Backhoe, 1989, 4WD, Cab, Ex 4-n-1 Bkt . . . . . \$19,900
- #8484 Case 580SE Loader Backhoe, 1986, 4WD, Cab, Ext Hoe . . . . . \$17,900
- #8494 Case 90XT Unloader, 2001, Hyd Cplr, Aux Hyd, 855 Hrs . . . . . \$25,900
- #8444 Case 1840 Unloader, 1991, Aux Hyd, Dirt Bucket, 1860 Hrs . . . . . \$10,900
- #8443 CASE 580SL Loader Backhoe, 1999, 4WD, Cab, Ext Hoe, 1800 Hrs, . . . . . \$42,900
- #8447 Case 580SL Loader Backhoe, 1999, 4WD, Cab, Ext. Hoe, 1850 Hrs. . . . . \$42,900
- #8276 Case 850E Dozer, 1993, Bottom 80-85%, 4700 Hrs . . . . . \$36,900
- #8279 Case 580SL Loader Backhoe, 1995, 4WD, Cab, Ex, 2500 Hrs. . . . . \$34,900
- #8214 Case 580S Loader Backhoe, Cab, Ext. Hoe, 2WD, Radio . . . . . \$40,900
- #8176 Case 580SL Loader Backhoe, 1997, 4WD, Cab, A/C, EX., 4310 Hrs. . . . . \$38,900
- #8100 AC 840 Wheel Loader, 1973, 1 1/2 Cu. Yd. Bkt. . . . . \$11,900
- #7975 Case 580SL Loader Backhoe, 1997, 4WD, Cab, Ext. AC, 2612 Hrs. . . . . \$37,900
- #7923 New Holland LX885 Skidloader, 1997, cab, good tires, tracks, 2500 Hrs. . . . . \$16,900
- #7491 Case 1840 Unloader, 1998, Aux. Hyd., Drt. Bkt., 1212 hrs. . . . . \$14,500
- #7870 Case 570LXT Tractor/Loader, 1996, 4 WD, Canopy, 3 Point Hitch, Filled Tires, 500 Hrs. . . . . \$24,900

**Vernon E. Stup Co.**

5859 Urbana Pike, Frederick, MD 21701

**301/663-3185**

**Jonestown Ag Repair Shop**

Complete Skid Loader Repairs Our Specialty



**TIRE FAILURE?**  
We can help with  
**"Multi Seal"**  
Tire Sealant

Galaxy skid loader tires & other brands

**Painting & Sandblasting**

170 Old Rt. 22, Jonestown, PA 17038  
Darvin Weaver

**717-865-9427 717-865-9096 Fax**



**1971 JD 410, Diesel Full Cab w/Heat \$7,500**  
**Call Joe @ 610-358-5240**

**I'M NOT LION...**

**THE CLASSIFIED LIVESTOCK SECTION HAS BEASTLY SELECTIONS!**