

1 FARM EQUIPMENT

WD45 AC, w/factory PS, WF, 3pt, clean, \$3,950. LanCo, 717-336-1282.

We buy scrap metal, competitive prices paid. So. Lanc. Co. 717-284-2800

Gehl 4625SX skid loader, bucket w/round bale spike, aux. hyd., fully encl. cab, 1100 hrs, exc. cond., \$12,500. 315/493-4101

JD 7600 tractor, 4x4, PQ, open station, nice, \$24,500. 301-733-2195.

Farmall H tractor, good cond, hyd. & good rubber, \$1,225. 717-279-8488

JD 4850 4wd, 5500 hrs, 50 hrs on complete OH, trans rebilt 2001, 3 outlets, power shift, new front tires, quick hitch, duals, full rake of weights, \$35,000. 717-567-7271

NH 326 Baler, exc cond., asking \$4,800. 610-488-7597 lve msg.

JD 4440, (2) to choose from, PS, or quadrange. Both are very clean w/ exc. eye-appeal. Your choice \$23,500; (2) JD 4430 avail. very nice, orig. cond. Call for details Zeis-loft Eq. Rt 44, Bloomsburg, PA 800-919-3322. More Tractors Avail.

1956 Ford 800 w/loader, runs great, \$3,800. 717-665-2172.

3020 Diesel, WF dash, PS, 1 remote on steel or rubber, \$5200. Oliver late style rolb bar hay rake, \$385. Nl 2 spinner, 3pt fert spreader, \$175. 717-534-1253

4WD Case IH 685 w/2255 loader, 65hp, dsl, 2500 1-owner hrs, dual outlets, canopy, \$16,500. 3pt 8-1/2 ft snowblower, like new, \$2450. 315-964-1161

JD 8' transport disc, \$875; Farmall Cub w/sickle bar mower, \$2375; Farmall 350 utility, \$3875. 610-916-3959

IH 781 forage harvester, new knives & shear bar, exc. cond., asking \$3000; NH 499 haybine, working cond., price neg. 301-334-5860

Clark diesel 6000 lb fork-lift, pneumatic, 12x27 front, 6.5x22 R, \$4500. 717-733-0142

1950 Ford 8N, v.g. cond, includes front snow plow & rear, scoop bucket, \$3000 obo. 814-448-2183

NH 824 CORN HEAD w/ 30" rows, \$2,800 OBO. 570-966-5881.

(2) JD 115 Chuck Wagons, inside, v.g. \$1,875/ea.; Knight 3300 Reel Auggie, w/haybuster, \$8,500, v.g.; Easy Trail Gravity Wagon, like new, \$2,000, inside; Assorted feeding equip, conveyors, bunk wagons, etc. 717-337-0372.

1939 JD B tractor, completely overhauled, new tires-fri & back, spoke wheels, power lift, good tin, runs good. 814-793-3954.

(3) NH 1890 choppers for parts w/motors or can be rebuilt, \$2,000/each. 814-793-4293

CIH 485 tractor w/IH 225 loader, dirt & snow buckets, cab, turf tires, calcium, chains, 3082 series B backhoe, 1265 orig hrs, exc cond, all books. \$12,000. 610-933-5801 ext 141 Chester Co

Case Int'l 685 Tractor, 4wd, rollbar w/canopy, runs good, \$8,900. 717-859-3501.

1996 NH LX665 skid loader w/backhoe, 1300 hrs, \$14,900; 1996 Case 1840, 1900 hrs, \$9700; Case 1845B, bucket, forks, \$5900; Bobcat 943, grapple bucket, \$6500; Bobcat 974, grapple bucket, \$6500; Good steel skid loader tracks, \$900. 717-859-3501

(2) NOS buckets for JD #40 loader, (1) reg & (1) snow, exc. 610-935-4945.

BUSH HOG SALTZGIVERS TRACTOR REPAIR
1757 Baltimore Pike, Hanover, PA 17331
NEW & USED TRACTORS AND EQUIPMENT
BUSH HOG MOWERS & LOADERS
717-632-9119
Late Model Used Equipment

| | |
|------------------------------|-------------------------------------|
| Ford 340B Tractor Loader, PS | Ford 4000 All Purpose Dsl, 52 hp |
| Ford 4500 TLB, Open ROPS | Used Bush Hog 2512 12' Pull Type |
| Ford 555B TLB | Ford 2000 Gas, 3-Cylinder, Live PTO |
| MF 205 w/Belly Mower, 2WD | Ford 2000 Gas, 4-Cylinder |
| MF 275 w/Loader, Dsl., PS | Ford 8N |
| Ford 4600 SU DSL, 52 hp | Ford Jubilee |

Black Rock Repair

MANUFACTURER OF FARM & HOME SPRAYERS
TRAILER 3 PT HITCH AND HORSE DRAWN SPRAYER
PRODUCE HIGH PRESSURE BOOM SPRAYER
SPRAYER PARTS AND SERVICE
PRESSURE WASHER - HYDRAULIC HOSES
(BLACK WALNUT CRACKER)

858 Pumping Station Road, Kirkwood, PA 17536 **LeRoy B. King** 717-529-6553

B. EQUIP. INC.
8422 Wayne Highway, Waynesboro, Pa. 17268
717-762-3193
7AM - 5PM Mon.-Fri. • 7AM - 3PM Sat.

NEW EQUIPMENT

| | |
|--------------------------------|----------------------------|
| Agco DT160 | Kuhn Hay Equip |
| Agco LT85 | Woods Mowers & Snow Blades |
| Agco LT70 | |
| Agco ST Compacts | |
| Hesston 1345 Mower/Conditioner | |
| White 6510, Cab, AWD | |
| M&W Baler 4407 | |
| M&W Baler 4497 | |
| Hesston R Baler 540 | |
| Keenan 115 Feed Processor | |
| Hesston 4755 Baler | |
| McConnell Dump Wagon | |
| Hesston 4790 Baler w/cutter | |

USED EQUIPMENT

| | |
|-------------------------------------|--|
| 1470 JD Mower Conditioner, Exc Cond | AC 6080 AWD w/Ldr, Field Ready, New Paint |
| 1470 JD Mower/Conditioner | 1016 Balzer Dump Station |
| R52 Gleaner Combine, Super Nice | 1260 Gehl Harvester w/330C Head & Hay Pickup |
| Farmall Model H Above Average Cond | |
| NH 489 Haybine | |
| C Farmall w/Front Blade | |

Price Us Before You Buy!

www.bequipinc.com

JOHN DEERE

Model 200CS
Perfect for limbing, pruning, and cutting firewood, these heavy duty 10-pound models are very affordable

Engine Size: 30 cc While supplies last! Regular \$179.99 **Special Sale Price \$139.99**

Deer Creek Equipment
Strength You Can Count On

CLAYTON, DE • 1-800-367-2726
OXFORD, PA • 1-800-255-6567
WHITEFORD, MD • 1-800-551-6567
www.dcequip.com

ROCKYFIELDS FARM
6538 Browns Quarry Rd Sabillasville, MD 21780
301-241-3444
Email:RockyfieldsFarm@aol.com

Custom Farming - Used Farm Machinery - Equipment Repair - Hauling

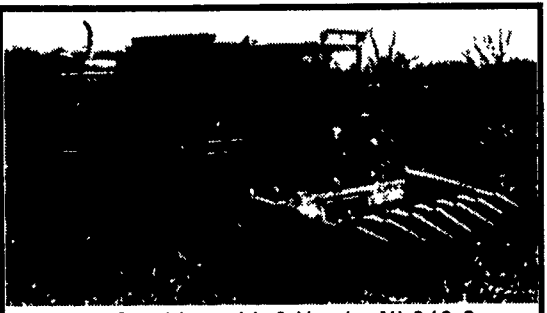
Tractors - MF 1135 CAH New Rear Tires Case 1070 New Paint and Engine OH Case 970 New Rear Tires and Transmission
JD 2240 w/145 Loader 1800 Hrs Ford 4500 Backhoe

Skid Loaders - New Holland L565 1800 Hrs

Tillage Equip. - IH 4 Bottom Automatic Reset JD Disk JD 950 Roller Harrow 10 Shank Chisel Plow

Planting - AC 333 6 Row d, f Insect Haybuster 107 Grandrill JD 21 Hole LM Drill D Disc

Misc. - 400 Bu Grain Cart



Int. 1460 Combine with 2 Heads, NI 846 Corn Head, 820 16 Ft. Flex Head \$18,000

Hesston 7165 Harvester, New Knives, Hay Head and 3R Corn Head, Good Condition \$10,500

Krause 1715 Single Fold, 16 Ft. Disc . . \$2,600

NI 325 2R Corn Picker. \$2,200

Richardton Dump Wagon, Model 1400. \$2,200

Stoltzfus Feed Bin, 7 Ton. \$800

Behlen 1600 Bu. Round Corn Cribs . . . Call

Gehl Forage Wagon, 920 - Needs Repair \$700

N.H. #55 Elevator (with Corn Attachments). \$450

J.D. 672 Rake, with Dolly Wheel \$1,800

N.I. 406 Hydraulic Drive Rake, with Dolly Wheel \$1,800

Badger 3350 Gal. Liquid Tank Spreader . \$1,450

Ficklin Bin Wagon, Model 435 \$1,200

(2) McCurdy Bin Wagons, Model 230 . . \$700

(3) Ritchie Waterers, Model 5E . . . \$50/O.B.O.

Berks County
717-933-5771 (home) 717-507-0599 (cell)

COVE TRACTOR INC.
Quality Pre-Owned Tractors and Equipment
5243 Churchview Rd., New Enterprise, PA 16664
Phone: 814-766-2102 Fax 814-766-0149

TRACTORS
Ford 800, Gas
Moritz 25' Gooseneck trailer, 20,000 GVW, 2000 Model, like new
CIH 685, 4x4, w/2255 Ldr, **SOLD**
CIH 485, w/2250 Ldr, 4x4, **SOLD**
CIH 895, 4x4, 8 spd, shuttle **SOLD**, 2255 LDR, In Stock
IH 584 4x4, w/2250 Ldr, very nice
IH 684 w/2255 Ldr
IH 684, 2w **SOLD** 50 loader
IH 766, 10 hrs, very nice open sta
IH 1066 74 model, JUST TRADED
IH 766, cab, very nice
JD 2355 MFWD, w/245 loader, In Stock.
JD 4450 MFWD, C&A, power shift, 3500 hrs., in stock
JD 2950, lo hrs, very nice
JD 2750, open sta **SOLD** del
JD 4240, cab & air, pwr. shift
MF 175 dsl, 8 sp. excellent, late model
MF 399 4x4 Cab & Air 90 Model, Coming In

HAY EQUIP:
NH 320 #70 Thrower, Excellent & Field Ready
Hesston 540 round baler, like new, electric tie

Patz Miller-Lake, Inc.
4567 E. Main St. **GEHL**
Belleville, Pa. 17004
(717) 935-2335

PRE-OWNED EQUIPMENT

| | |
|---|----------|
| JOHN DEERE 7600 Tractor O/S (5131 Hrs.) | \$26,500 |
| JOHN DEERE 2955 w/Cab (2528 Hrs.) | \$24,000 |
| JOHN DEERE 2640 w/Loader (3559 Hrs) | \$12,000 |
| JOHN DEERE 4010 Gas Tractor (1819 Hrs.) | \$6,500 |
| GEHL SL4625 (1000 Hrs) | \$12,500 |
| GEHL 3825 Skid Steer Loader (500 Hrs) | \$11,000 |
| GEHL 3825 Skid Steer Loader (1195 Hrs.) | \$10,500 |
| GEHL BU980 w/12 Ton Gear | \$8,800 |
| JOHN DEERE 336 Baler w/Ejec | \$3,700 |
| JOHN DEERE 1600A MoCo | \$7,900 |
| JOHN DEERE 1219 MoCo | \$1,950 |
| JOHN DEERE 7000 6 Row Planter | \$4,500 |
| JOHN DEERE 2 Row Head | \$2,500 |
| JOHN DEERE 3 Row Narrow Head | \$4,500 |
| GEHL 315 Spreader | \$3,500 |
| NEW HOLLAND 28 Forage Blower | \$1,200 |
| BADGER Forage Blower | \$3,500 |
| WOODS Rear Blade 8 Ft | \$1,500 |
| GEHL 1260 Harvester w/2 Row & Pickup | CALL |

CFS has the PRE-OWNED EQUIPMENT YOU NEED!

| | | | | | |
|---|---|--|---|---|---|
|  | Schuler BR 175 Feed Cart Ext. Sides, 540 PTO (C25013) \$4,900 |  | '95 Case IH 8580 Large Sq. Baler 4x4 Bale Size, Flotation Tires, 1,000 RPM with Auto Lube (C25321) \$19,900 ... Just Traded! |  | John Deere 8300 Grain Drill 21 x 7, D.D.O. (C25194) \$3,200 |
|  | IH 5100 20 x 16, D.D.O. (C25198) \$4,400 |  | '95 Case IH 7220 Magnum MFD Cab, A/C, AM/FM, Diesel, 18 Spd. Powershift, 3 Pt. Hitch, 540/1,000 PTO, 1997 Case, IH 890 Ldr, 96" Bucket (C25143) \$55,000 |  | Great Plains 1005 NT 10' Grain Drill, No Till (C25198) \$9,850 Just Traded! |

See a piece of equipment you like? But don't like the price? NO REASONABLE OFFER WILL BE REFUSED!

CFS Chambersburg Farm Service 717-264-3533 or 800-447-6830
Carlisle Farm Service 717-243-4419 or 800-447-6829

* All prices are Cash & Carry See CFS for details Not responsible for typographical errors

Visit our Web Sites at www.caseih.com and www.casecredit.com
Case IH and Case Credit are registered trademarks of Case Corporation

CASE CREDIT **CASE III**