

Public Auction Register
 Closing Date Monday 5:00 P.M.
 of each week's publication
 Internet Sale Register will be updated
 by Friday at 12 Noon

ATTENTION AUCTIONEERS
 All sales register info needs complete address,
 street, town, county & state.

FRI NOV 8 9AM Tractors farm eq & supplies A&C Dffenbach Auct Inc AU2258L
 FRI NOV 8 12 Noon Dairy Sale

Middleburg Livestock Auction Sales Inc PO Box 185 Middleburg Pa Clarence Shirk and John Shirk owners 717 656-8793

AUCTIONEER'S DIRECTORY
 Call 717-626-2191 to list your auction service

MARTIN AUCTION SERVICE
 410 W. Church Rd. Ephrata, PA 17522 (717) 733-3511 AU2280-L
Real Estate • Farm Equipment • Antiques • Household Goods
 It doesn't cost to use our Auction Service...It Pays.
CALL TODAY!!

John D. Stauffer Auctioneers
 1484 Mountain Road, Manheim, PA 17545
 Fulltime Courteous Professional Auction Service Since 1976
 Real Estate • Farm Equipment • Antiques
 Personal Property • Livestock
 Phone 717-665-5099 AU-1509-L

HFA HORNING FARM AGENCY, INC.
 REALTORS • AUCTIONEERS • APPRAISERS
 Alvin & Elton Horning • Merle Eberly AU-2417-L
 C Ivan Stoltz 3920-L
 Morgantown, PA (610) 286-5183
 >> Courteous Real Estate Services
 >> Professional Auctioneers
 >> State Certified Appraisers
 >> Specializing in Farms and Land

KLINE, KREIDER & GOOD AUCTIONEERS
 www.klinekreidergood.com
 COMPLETE PROFESSIONAL AUCTION SERVICE
 REAL ESTATE - FARMS & RESIDENTIAL
 LIQUIDATIONS - ANTIQUES - FARM MACHINERY - LIVESTOCK
 RANDAL V KLINE AUCTIONEER-REALTOR 717-733-1006 AU #499
 ROY E GOOD AUCTIONEER (717) 445-4309 AU #2116

The Sound That Sells
 I Weaver Auctioneering Tom & Kent Inc VA, WV, IND, PA.
 Farm Machinery Estates Antiques Household Items Specialty Auction
 Rushville Hay Auction • 1st & 3rd Wed.
 3216 Whitmore Shop Rd. Harrisonburg, VA 22802
 1-888-508-7579 Fax (540) 867-0898 Cell (540) 435-0020
 VA #AR2367 TOM (540) 867-0467
 WV# 1448 KENT (540) 828-4693
 IND# AU10000240 PA# A-U003907-R VA #AR2543

HORNING AUCTION SERVICE
 Bringing More!
 • Personal Property • Real Estate
 • Agricultural • Commercial
CURVIN M. HORNING - AUCTIONEER
 150 N Shirk Road New Holland PA 17557 License No 3956 I
 Phone No. 717-351-0377

FRI NOV 8 - 1PM State Graded Feeder Pig Sales Carlisle Livestock Market Inc Exit 44 off I-81 turn S then left onto Alexander Spring Rd 717-249-4511

FRI NOV 8 - 6PM General Auction Col Kirk's Auction Gallery 2267 State Rt 42 Millville Pa 6 Mi N of Bloomsburg/2 Mi S of Millville Col Kirk S Williams AU 002623 L 570 458-6682

SAT NOV 9 Reserved for special donation auction for Amic Brarcliff Manor NY

SAT NOV 9 10 AM Farm equip & hay 1215 Rt 419 Womelsdorf, PA 2 mi N of Rt 422 or 7 mi S Rt 78 along Rt 419 Sale for Paul & Julie Keller Wolgemuth auction #2357 717 656 2947

THURS NOV 14 3 30PM General Auction Col Kirk's Auction Gallery 2267 State Rt 42 Millville Pa 6 Mi N of Bloomsburg/2 Mi S of Millville Col Kirk S Williams AU 002623 L 570 458 6682

FRI NOV 15 Joy-Wil Holsteins complete dispersal Oxford PA Hostetter family 150 head of out standing registered holsteins

FRI NOV 15 - 9AM Equipment Sale Middleburg Livestock Auction Sales Inc PO Box 185, Middleburg, Pa Clarence Shirk and John Shirk, owners 717-656-8793

FRI NOV 15 - 6PM Horse Sale New Holland Sales Stables, Inc 101 W Fulton St New Holland Pa

FRI NOV 15 - 6PM General Auction, Col Kirk's Auction Gallery 2267 State Rt 42, Millville, Pa 6 Mi N of Bloomsburg/2 Mi S of Millville, Col Kirk S Williams AU-002623-L, 570-458-6682

FRI NOV 15 - 7PM Horse and Tack Sale Red Carpet Horse Company At Carlisle Livestock Exit 44 off I-81 turn south then left onto Alexander Spring Rd, Chrs 814-886 5228 Kevin 814-886-4864

FRI NOV 15 - 7PM Feeder Sale Middleburg Livestock Auction Sales, Inc PO Box 185 Middleburg Pa Clarence Shirk and John Shirk owners 717-656-8793

SAT NOV 16 For Phares H Shirk 805 Evans Rd Narvon, Lanc Co farm equip, tools by Martin's Auct Service #1078

TUES NOV 19 - 8AM Special Fed Cattle Sales Earlybird pens close at 2 PM Exit 44 off I-81 turn south then left onto Alexander Spring Rd 717-249-4511

TUES NOV 19-9AM Quilt Craft & Buggy A&C Dffenbach Auct Inc AU2258L

TUES NOV 19 - 7 30 PM Feeder Cattle Sale Carlisle Livestock

Market Inc Exit 44 off I-81, turn south then left onto Alexander Spring Rd 717-249-4511

WED NOV 20 & THURS NOV 21 - Marion Auction Service 5174 Horst Road, Chambersburg, Pa 717-375-4700

THURS NOV 21 - 3 30PM General Auction, Col Kirk's Auction Gallery, 2267 State Rt 42, Millville, Pa 6 Mi N of Bloomsburg/2 Mi S of Millville, Col Kirk S Williams AU-002623-L 570-458-6682

FRI NOV 22 1PM State Graded Feeder Pig Sales Carlisle Livestock Market Inc Exit 44 off I-81 turn S then left onto Alexander Spring Rd 717-249 4511

FRI NOV 22 - 6PM General Auction Col Kirk's Auction Gallery 2267 State Rt 42 Millville Pa 6 Mi N of Bloomsburg/2 Mi S of Millville Col Kirk S Williams AU-002623 L 570-458 6682

SAT NOV 23 9AM Horse Sale Mel's Stables 834 Wallace Rd New Holland Pa 717 354-8397

FRI NOV 29 Farm Equipment & Antique Tractors 109 N Maple Ave Leola Pa Wolgemuth Auction #21357 717-656-2947

FRI NOV 29- Feeders 1PM New Holland Sales Stables, Inc 101 W Fulton St New Holland Pa

FRI NOV 29 - 6PM Gift & Toy Auction, Col Kirk's Auction Gallery 2267 State Rt 42, Millville, Pa 6 Mi N of Bloomsburg/2 Mi S of Millville, Col Kirk S Williams, AU-002623-L, 570-458-6682

SAT NOV 30 - 8 30AM 5th Annual Kingspala Farm & Construction Consignment Auct Wolgemuth Auction #2357

SAT NOV 30 - 11AM Horse Sale Middleburg Livestock Auction Sales, Inc PO Box 185, Middleburg, Pa Clarence Shirk and John Shirk, owners 717-656-8793

DECEMBER

TUES DEC 3 - 8AM Special Fed Cattle Sales Earlybird pens close at 2 PM Exit 44 off I-81 turn south then left onto Alexander Spring Rd 717-249-4511

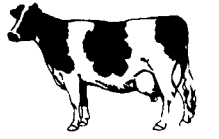
WED DEC 4 Lumber & Building Supplies 109 N Maple Ave Leola Pa Wolgemuth Auction #21357 717-656-2947

WED, DEC 4 - 6 30 PM Winross, Hess, Farm Trac & Toys A&C Dffenbach Auct Inc AU2258L

THURS DEC 5 - 3 30PM General Auction, Col Kirk's Auction Gallery 2267 State Rt 42 Millville, Pa 6 Mi N of Bloomsburg/2 Mi S of Millville, Col Kirk S Williams AU-002623-L, 570-458-6682

Dairy and Livestock Sales

NEW HOLLAND SALES STABLES, INC.



New Holland, Pa.
 Located 12 Miles East of Lancaster, just off Rt. 23

DAIRY SALE - WEDNESDAY, SEPT. 4, 2002

- 10:00 AM BRED HEIFERS, SHORTBREDS & OPEN HEIFERS**
- 11:45 AM BULLS**
- 12:00 NOON FRESH COWS & SPRINGERS**

Weekly Consignors

- Merle Breneman • Leroy Smucker
- Marvin Eshleman • Dale Hostetter

"Selling for Pierre Boulet"
 Load of Canadian Cows (Fresh) and Heifers

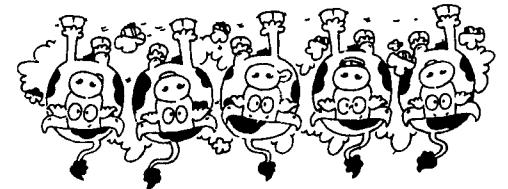
12 1st Calf Heifers Just Fresh, From One Herd

Several Bulls Sell From Top Pedigrees

Note: Special Fall Heifer Sale
 Sat. -- Sept. 7th -- 9:00 A.M.

NOTE TO CONSIGNORS!
 Please send all information along with your cattle Tues.
 Fresh Date, Breeding Dates, Milk Weights, with your trucker.

Sale Managed By
New Holland Sales Stables, Inc.
 Barn 717-354-4341 Fax 355-0706
David Kolb, Mgr. 61L



Sat., Sept 7 - 9:00 A.M.



"Plan to be with us all day"

Fall Heifer Sale

Registered & Grade Dairy Heifers - All Breeds
New Holland Sales Stables Inc.

1000-1200 Heifers Selling

Sale Time

- 9:00 A.M. - Bred Heifers
- 12:00 NOON - Fresh Heifers
- 12:30 PM - Service Age Bull
- 1:00 PM - Short Bred - Heifers
- Later afternoon - Open Heifers - Breeding Age
- Later later afternoon - Small Heifers

Call for details

David Kolb (717)354-4341 Don Welk (717)687-7475

Note Bring your Heifers into The Sale Barn, Thursday and Friday - send notes on details, breeding dates, sires, milk records - etc.

Sale Managed By
New Holland Sales Stables, Inc.
 Barn 717-354-4341 Fax 717-355-0706
David Kolb, Mgr. 61L

Lancaster Farming
 Check out our Website

www.lancasterfarming.com

FEEDER CATTLE SALE

TUES. EVE
Sept. 3

Approx. 7:45 PM

WESTMINSTER
 LIVESTOCK AUCTION
410-848-9820

HAY SALE
 Every Tues. at 11:00 AM

MAKE PLANS NOW TO ATTEND
LEBANON-BERKS FALL HARVEST SALE
SATURDAY, OCTOBER 26

11:00 AM
MYERSTOWN, PA

100 Registered and Sire I.D. Holsteins 100

***50 Fresh 1st and 2nd Calf Heifers**

***30 Bred Heifers**

***20 Yearlings and Calves**

***Many of the breeds most respected sires will be represented at this sale.**

***Make plans now to attend this sale at**

the former Ray Bicksler farm,

Myerstown, PA.

Watch for future ads

in Lanc. Farming.

Sales Staff

Harry Bachman-Auct. AU-000033-L

Daniel Brandt-Pedigrees

Jeff Peifer Daryl Weaver

Bob Landis (717-560-1830)

Dave Bitler (610-944-0541)

Pat Arnold