

86 F700 dump truck, 8.2L dsl, 56k, \$6500 OBO. 301/249-5324

1985 Ford LTL triaxle dump, rebuilt 400 Cummins, 13 spd, 19' alum dump, steel lined, lots of new & rebuilt parts, too much to list, asking \$30,000 OBO. Consider backhoe or classic car as partial trade. 570-345-3954.

1985 Peterbilt Silver V8 92, 15 spd, all new tires & paint, 717-529-2051.

'96 Chevy Cheyenne 2500, 4x4, 350 auto, PS, PB, cruise, tilt, air, AM-FM cassette, 8,600 GVW, 62,000 one owner miles, new radials, dark green, \$12,900. 717-733-2873

'90 42 ft Timpco hopper bottom grain trailer, roll tarp, Budds, v.g. cond, \$10,700. 717-534-1253

1991 Ford F250 V8, 5-spd, AC, 80,000 mi, \$2800 OBO. 717/933-4114

'92 F350 dsl, crew cab, dually, \$7,900. '96 Ford Explorer, 4x4, nice, \$7,000. '90 Mack CH613 conv. twin screw, 350hp, 10 spd, sleeper. \$7,900. 717-362-4265.

Large Truck Sale: #42, 1980, Marmon cab-over, double bunk. \$4000. #40, 1991, Marmon cab-over, \$5000. #26, 1979 Marmon cab-over, \$2500. #31, 1990, Freightliner conventional, \$3500. #33, 1990, Freightliner conventional, \$4500. Well maintained fleet. 717-445-4501 ask for Kenton.

91 GMC 3500 dually 4x4, ext. cab, towing pkg, gooseneck 2 5/16 fold down ball, diamond plate toolbox w/8.5' Western snowplow, exc. work truck, \$9500. 717-872-7520

1978 Mack R600 Tractor, 300 6spd. w/wetline, ps, Rodgers 35T detach Low bed, \$10,000 for both or will separate. 609-921-1619.

Mack B81 tandem dump, 237 engine, good site truck or part out, \$2,500 OBO. 609-921-1619

1995 F350 Diesel, 4x4 utility w/snow plow, 70,000 miles, exc. cond, \$18,000 OBO. 609-921-1619.

30' Trail Boss gooseneck, 20' tilt bed, rub rails & pockets, triaxle, \$6200. 570-434-2512

'86 3/4 ton Chevy PU, 4x4, 350 eng, 4 spd trans, VG cond, \$2,500. Harford Co, MD, 410-357-8366.

'79 GMC General dump truck, 8V92, 470hp, 8LL trans, 44,000# rears, 19 ft alum dump body, \$7900. 570-739-4843

97 Ford CF7000, chassis, CAH, 6spd, 26,000 GVW, PS, air brakes, air ride, radio, 192 wheel base, 10-22-5 tires, 66,000 miles, \$18,500. 215-533-1234.

'96 Ford XLT Ranger short bed, 4 cyl, 5 spd, PS, PB, air, AM-FM cassette, new radials, 69,000 miles, black, \$4,275. 717-733-2873

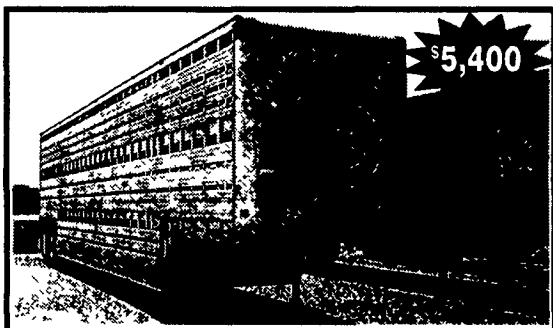
'93 Dodge LE 250 club cab pu, 2WD, 360 auto, PS, PB, PW, PDL, cruise, tilt, air, 410 ratio, towing package, 59,000 one owner miles, blue & silver, excellent condition, \$8,975. 717-733-2873

'98 GMC SL 2500 extended cab, 4x4, 350 auto, PB, PS, cruise, tilt, air, am-fm cassette, 8,600 GVW, new radials, red, excellent condition, \$15,900. 717-733-2873

'86 Accurate trash transfer trailer, 40 ft, good cond, \$7000 obo. 717-872-9152

Buy a pre-owned car or truck for auction net + 7% (Manheim online). Eagles Nest Auto Buyers' Agent, Duncannon, PA. Toll-free 877/801-2230

SAVE. STORAGE OR ROAD TRAILERS, 20' or 40' GROUND LEVEL CONTAINERS. PROMPT & COURTEOUS SERVICE. REASONABLE RATES. YOUR STORAGE SOLUTION, INC. 610/921-1955, 1/800-220-6082



1994 EBY TRIPLE DECK TRAILER

- 48' x 13' x 96" Aluminum Trailer
- Auto Slacks
- Henderson Air Ride Suspension
- Exterior Winter Slats
- Hub Pilot Rims w/Low Pro 22 5 Tires
- Clean!!!
- Fleet Maintained with all Maint Records

CALL CRIST @ 717-653-8061 Ext. 3091



27' ALUMINUM BED W/WOOD FLOOR

"Nice Shape", Only Used 75,000 Miles Off Triaxle Truck.....\$5,000 Call Jim

717-786-2171



1995 Mack CH613

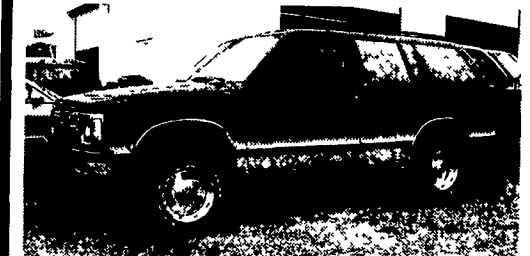
E7 Mack 350, 10 Spd. Eaton Trans., 4.33 Eaton Rears, Air Suspension, All Aluminum Wheels, 211" W.B., 147" CT

(717) 597-5623

Anthony L.

LANDIS
AUTO SALES

3394 Division Hwy, New Holland, PA 17557
Rt 322, 1-1/2 mi west of Blue Ball (717) 355-0644

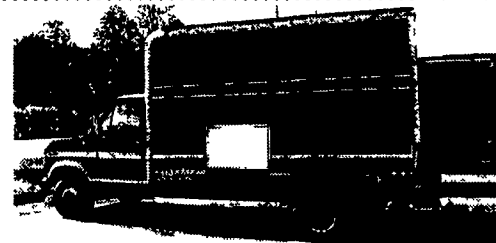


92 Chevy Blazer S10

4 Dr., 4WD, 4.3, AT, PW, PDL, A/C, Leather, 115,000 Mi., Runs Good. Some Rust on Door Bottoms. Nice Truck, Just Needs Some Work

\$2,400

12,000 lb, 2 Post Truck Lift, Good Condition, \$3500.
BREWER EQUIPMENT Co.
570-683-5411



1988 Ford Step Van, Gas, Auto., 10,700 GVW, 12' Box, Alum. Ramp, \$2,500

Call Joe, 610-358-5240

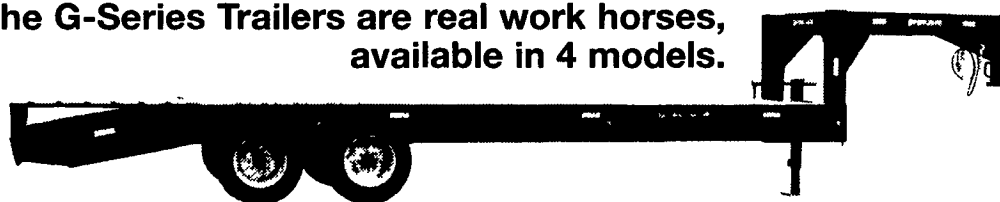


'87 Mack Superliner, E9-500, 9 spd, AC, air ride, wet line, many recent repairs, good shape & works daily.
724/301-0844.

PEQUEEA
Tradition In Progress

Hauling is easier with a Pequeea Trailer. Designed to be efficient and durable, you can count of years of service with a minimum of maintenance.

The G-Series Trailers are real work horses, available in 4 models.



Available in 4 models, the Skid Steer trailers have a maximum of space & a low profile for easy loading.



Ideal for medium hauling, the Deck Over trailers are available in 3 models.

Put A Pequeea Trailer Behind You, Today!



Pequeea Machine, Inc. • A Skibo Company • 717/354-4343 • fax 717/354-8843 • www.pequeeamachine.com

Call Your Local Dealer Today!

PA
Charles S Snyder, Inc.
Tamaqua, PA
570/386-5945
fax 570/386-4080

Eagle Rental Center
Stevens, PA
717/336-3945
fax 717/336-3007

Eckroth Equipment Co.
New Ringgold, PA
570/943-2131
fax 570/943-7651

Eckroth Equipment Co.
Orefield, PA
610/366-2095
fax 610/366-1660

J D Equipment
Pennsburg, PA
215/679-5958
fax 215/679-5958

Kuzan's True Value
Shoemakersville, PA
610/562-7186
fax 610/562-7399

Southern York Turf & Tractors
Shrewsbury, PA
717/235-9400
fax 717/235-6515

Stoltzfus Farm Service Inc.
Cochranville, PA
610/593-2407
fax 610/593-2482

Wengers of Myerstown
Myerstown, PA
717/866-2135
fax 717/866-9254

DE
Ken's Trailer Sales
Smyrna, DE 19977
302/653-2222
fax 302/653-6003