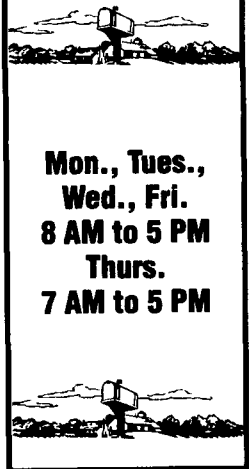


**BUY,  
SELL,  
TRADE  
OR  
RENT  
THROUGH  
THE  
CLASSIFIED  
ADS  
IN  
Lancaster  
Farming**

**PHONE:  
717-626-1164  
OR  
717-394-3047**

**FAX:  
717-733-6058**



**Mon., Tues.,  
Wed., Fri.  
8 AM to 5 PM  
Thurs.  
7 AM to 5 PM**

**35 TRUCKS  
AND  
TRAILERS**

Storage Trailers. Sale, rent. 40' - \$950, 28' - \$750. Germak 717/944-2487

'71 Dodge moving van, 20' long, V8, 5 spd, fair shape, runs, good for storage, \$600. 717-273-3823.

'95 Chevy dump truck, 30,000 mi, red, like new cond, plow & cinder, \$15,000. 717-246-0833.

1995 Mack CH613, E7 Mack 427, w/eng brake, 10 spd, air suspension, wet line. No Sunday calls. 717-597-5623.

92 Chevy 1500 5-spd, AC, 305 engine, 4x4, hitch, bed liner, \$7350. 610-489-7831

'83 International reefer truck, 35,000 GVW, \$5,000 O B O 717-768-7843.

(10) Tires on Alum. Budd Wheels, 11-22.5, \$2,000 for all 10. 1980 GMC General Tractor 8V92 Detroit, 7spd tandem. Engines: Mack 300-4 ; CAT 3176; Detroit 6V92 Silver. Parts for pickup trks. Bradley's Truck Parts, Nottingham PA, 610-932-4900.

1993 Chevy cattle truck w/alum box. 1952 Int. R-180 dump truck, runs well, best offer. 717-468-3446

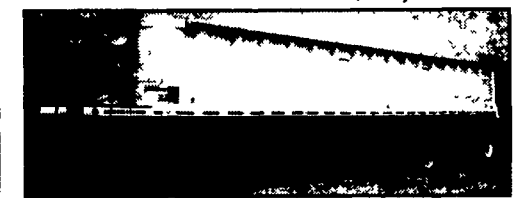
**SELL OFF!  
TRACTORS**



1992 Mack CH613, 350 Mack Engine, 8LL Trans., 12,000 F.A., 38,000 R.A., 4:42 ratio, 11 x 22:5 Radials, Lots of Extras + P.T.O. & Wet Line ..... \$19,000



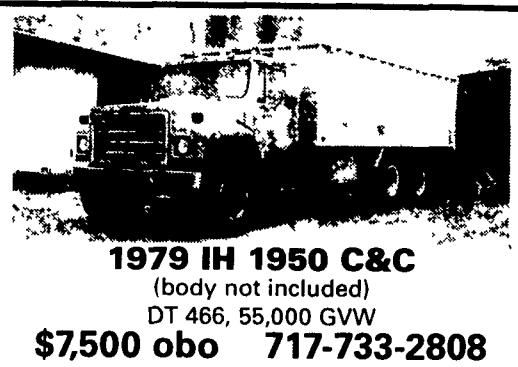
1989 Peterbilt 378, NTC Cummins 350, 8LL, 12,000 F.A., 38,000 R.A., 4:44 Ratio, 11 x 22.5 radials. PTO & Wet Line Good Older Tractors ..... \$13,000 EA.



1988 Ravens 39' Conventional Frame Aluminum, 120" Spread Axle, Air Ride, Body Heat, Roll Over Mech Tarp. Won't Last Long At ..... \$14,000

**FLAT BEDS**  
(8) 1986 Dorsey 42' Flatbeds Sold As Is ... Call for Details. \$2500 EA.

**CALL DAVE YERGER  
717/733-6556  
Lester R. Summers Inc.  
NO AD SOLICITORS PLEASE!**



**1979 IH 1950 C&C**  
(body not included)  
DT 466, 55,000 GVW  
**\$7,500 obo 717-733-2808**



**New Open Car Trailer \$1,499**  
7,000 lbs GVW, elect. brakes, with ramps that slide out from under diamond plate steel runways  
**4x8 Utility Trailer \$399 • Car Dolly \$699**  
**302/368-9534**  
Newark, Delaware

**ROCK SPRINGS HARDWARE**



**Closed Utility Trailers**  
3,500# tandem axles, 24" crossmembers on floor, 16" crossmembers on walls, 3/8" plywood walls, 3/4" plywood floors



**Landscape Trailer**  
16'x77", 18'x77", 16'x83", 18'x83", w/3500lb or 5200lb axles, radial tires, brakes all the way around, w/break away



**Triple Crowns Dump Trailer**  
6'x10', 6'x12', 7000 lb GVW & 10,000 lb GVW Powder Coated  
6'x12', 12,000 lb GVW, twin cylinders, 750x16 tires, 8 lug \$4,695



**18' Contractors Special**  
capacity 12,000#, 6" channel frame with 6" channel wrap-around tongue, two 6,000# eight lug 750x16 Tires, all wheel electric brakes with breakaway kit



**24' Tandem Dual Pintle Pull**  
10" channel frame (15 3 pounds per foot), tandem dual oil bath axles, all wheel electric brakes with breakaway kit, 2" treated wood floor (20' flat deck, 4' dovetail), stake pockets and rub rails



**28' Tandem Dual Gooseneck**  
load capacity 20,000#, height of deck 35", 10" I-beam frame, 10,000# tandem dual oil bath axles, all wheel electric brakes with breakaway kit



**20' Hauler Tag-Along Deckover**  
Trailer Weight 3000#, Load Capacity 9,000#, Height of deck 35", 8" I-beam frame, 5200# EZ Lube axles - all wheel electric brakes w/breakaway kit, 2" treated wood floor, 16" flat deck, 4" wood dovetail, stake pockets and rub rail



**24' Tandem Deckover Gooseneck**  
load capacity 13,000#, 8" I-beam frame, two 7,000# eight lug EZ Lube axles, all wheel electric brakes with breakaway kit



**20' Lowboy Gooseneck**  
6" channel frame w/3" channel crosspieces, two 5200# EZ Lube axles-all wheel elec breaks w/breakaway kit, 2" treated wood floor, 20' flat deck, 83" between fenders, stake pockets & rub rail, chain box between neck uprights

**1320 Rock Springs, Rising Sun, MD**  
1/2 Mile South of Lancaster County on Rt. 222; Open 7 Days A Week: Mon.-Sat. 8-6; Sun. 8-4  
**410-658-5978 • 1-800-858-0288**  
**90 Days Same As Cash With Approved Credit**

**E. M. KUTZ, INC.  
TRUCK BODIES & EQUIPMENT**

Whitehall, PA 1-800-974-9779 Reading, PA

**SUMMER CLOSEOUT**

- Used Equipment**
- Western "V" Plow - 8 1/2' fits 1996 Ford #616 ... \$2,100
  - Gledhill Mild Steel Gearbox Spreader #626 ... \$1,350
  - Used Berming Machine, as is #630 ... \$300
  - Used Tailgate Spreader #629 ... \$500
  - Used 707 Gledhill Spreaders, Parts (2 Units) ... \$300
  - New 8' Toolbox, rusted ... \$100
  - Rusted Bumpers, utility bodies \$75/ea.
  - Meyer ST 7 5 Plow \$1,475
  - Meyer TM 6.5 Plow for Jeep \$1,300
  - Used 10' Steel Dump Body - 26" sides with hoist (no pump), needs Front bulkhead #820 \$850
  - Used 10'6" Steel Dump Body - 2 conveyors in bed with hoist #620 \$800
  - Used 24" Reading toolbox - underbody \$35
  - Misc Used Hydraulic Tanks - Call for Prices
  - 11' x 48" Good Roads Trip Edge Plow with QCP Hitch hookup #625 \$2,000
  - 10'6" Manual Reverse Plow #628 \$1,300
  - Gledhill Single Ear Jetstream Plow, 11' x 42" x 58" #725 \$2,850
  - Used Pickup Beds, '99 Fords, tailgate, bumper & bed liner - White \$575
  - Steel Dump Body with cab shield, 15' x 32" sides #801 \$550
  - Steel Dump Body with cab shield, 14' x 54" sides #802 \$550
  - 17' Aluminum Dump Body, 60" sides #804 \$8,750
  - 8' Steel Dump Body, 12" sides, without hoist #803 \$300
  - 8' Hi-Way Shp-in Spreader #640 \$1,795
- New Equipment**
- New Ford Pickup Bed, Bumper & Gate \$795
  - 8' x 96" Platform, bulkhead & light apron, no main rails \$795
  - New Heil Steel Dump Body, HM, Hoist & Cab shield 10' x 28" sides \$4,500
  - New Heil Steel Dump, SL, Hoist & Cab shield 10' x 26" \$4,250
  - E-Z Dumpers, for 8' Beds, Black \$1,750
  - Omaha Steel Dump Body, 8' x 92" x 18" w/Hoist \$2,550
  - Thieman Liftgate, 1200 Lb., 56" x 26" \$1,200
  - Omaha Badger Body, 8' x 82", rubrails, bulkhead & diamond plate floor, 34" setting \$1,050
  - 14' H D Platform Body, treadplate floor, bulkhead, no pockets \$1,425
  - 22' Omaha Platform Body, wood floor \$2,000
  - Swenson Chain & Sprocket Tailgate Spreader \$1,250
  - New Venco 415/516 Hoists \$1,395
  - Galion Steel Dump Body, 10' x 26" sides, cab shield, hoist mounting Kit (Coal door) Mounting Available \$4,275

**COMPLETE INVENTORY OF DUMP BODIES, STAKE BODIES, TOOL BOXES, FISHER & MEYER SNOWPLOWS**



**1988 GMC TOP KICK 7000** Tandem Axle Dump Truck, 3208 T Cat Engine, 250 HP, RT-6613 13 Speed Trans., SQ-100 4 88 Ratio Rear Air Gate - Heated Bed, Steel Body, 14 Ft 11R-22 5 Tires, Dayton Wheels, \$10,500



**1995 FREIGHTLINER FLD 112** Cummins M-11 Engine 330 HP, RT-13710 B Trans, DS-402 3 08 Ratio Rears, Air Ride Cab and Suspension, Alum Front Wheels, 275-80-22 5 Tires, Pilot Wheels \$85000



**1993 VOLVO WHITE GMC 3176** Cat Engine with Jake RTLO - Super 10 Speed Trans., DS-402- 3 70 Ratio, 10 Hole Pilot Wheels, Alum Front Rims, 22 5 Tires \$4,900



**1988 FORD CARGO 7000**, 6 6 Diesel Engine, 6 6 Brazil Ford Engine FS-4005 Trans Rockwell 1230 - 4 88 Ratio, 11R-22 5 Tires, 14 Ft Flat Bed, Lift Gate, \$4,000



**1988 F-350 STAKE BODY 1 TON**, V-8 EFI Engine, 5 Speed Transmission, 235-85-16 Tires, 14 Foot Stake Body, Lift Gate \$4,990



**1996 VOLVO WHITE GMC 3176 B** Cat Eng 325 HP, RTLO 13610 B Transmission DS-404 Eaton 3 90 Ratio Alum Front Wheels \$6,500



(2) 1994 VOLVO WHITE GMC, Cummins N-14, 350 HP Eng with Jake 9 Speed Trans 40,000 Rears, 22 5 Rubber, Alum Wheels \$6,900



(2) 1999 NISSAN UD, 4 Cyl Diesel Engine 145 HP, 5 Spd Trans, Single Speed Rear, 12 Ft Insulated Body, Barn Doors \$15,900



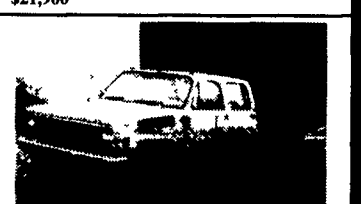
**1995 International 4700 (Non CDL)**, Roll Back, 444 E IHC Engine, 5 Speed Trans., Single Speed Rear, 19 5 Tires, 19 2 Foot Chevron Bed Alum, Light Bar, Tool Boxes \$21,900



**1993 MACK CH-613 DAYCAB TRACTOR**, 300 Mack EM-7 Engine, RTX 14609B Road Ranger Trans Eaton DS-402 4 11 Ratio Dayton Wheels, 22 5 Low Pro Tires, Rayco Suspension, 365,000 Original Miles \$15,600



**FORD AND IHC CROSS AXLE DUMPS**, Many To Choose From, Call For Pricing And Needs Starting As Low As \$2,990



**CREW CAB PICK-UPS**, 6 2 Diesel, Automatic And Manuals, Many For Different Purposes, Call For Pricing And Needs

**FIRESTONE MOTORS, INC.**  
330 S. THIRD ST. • LEMOYNE, PA • (717) 763-7721 • TOLL FREE 1-888-668-6778  
www.firestonemotors.com