

**35 TRUCKS AND TRAILERS**

1985 Ford LTL triaxle dump, rebuilt 400 Cummins, 13 spd, 19' alum dump, steel lined, lots of new & rebuilt parts, too much to list, asking \$30,000 OBO. Consider backhoe or classic car as partial trade. 570-345-3954.

1985 Peterbilt Silver V8 92, 15 spd, all new tires & paint, 717-529-2051.

'96 Chevy Cheyenne 2500, 4x4, 350 auto, PS, PB, cruise, tilt, air, AM-FM cassette, 8,600 GVW, 62,000 one owner miles, new radials, dark green, \$12,900. 717-733-2873

'90 42 ft Timpfe hopper bottom grain trailer, roll tarp, Budds, v.g. cond, \$10,700. 717-534-1253

1989 Ford F450 SuperDuty Truck, w/utility bed w/roof, 460 auto., good tires, runs good, needs some trans. work, exc body, very little rust, \$2,800 OBO. Call eve, 304-735-5710.

1991 Ford F250 V8, 5-spd, AC, 80,000 mi, \$2800 OBO. 717/933-4114

1987 Ford F350, 12' stake body dump, 460 gas, 4spd, insp. 5/02, asking \$6,000. Call 717-227-0924.



- 93 GMC 3500 HD 6.5 Diesel, 5 Spd., AC, Tilt, Cruise
- 95 GMC 3500 HD 6.5 Diesel, AT, AC, Tilt, Cruise

Both With Divided Aluminum Mulch Bodies

**Call - Weaver Mulch**

**610/383-6818**

**610/466-0945 (evenings)**

2000 Western Star 4964FX Day Cab, 430 C-12 Cat, FRO16210C, 11R24 5 on Alum, Wet Line, Maroon With All Bells And Whistles This Was WS Show Truck At Kentucky In 1999 225,000 Miles. .... \$49,500

1998 Western Star 5964SS Day Cab, 430 Detroit, RTLO-14713A, 11R24 5 on Alum., Wet Line, White, Good Solid Work Truck, 485,000 Miles **\$22,000**

1998 Western Star Tri-axle Dump 365 Detroit, RTLO-14713A, 4 56, 11R24.5 on Steel 385R22 5 Front on Steel, Lift Axle, 20'x72" Alu Summit, 425,000 Miles **\$51,000**

1994 Volvo White WIA64TB Bunk 430 Detroit 12 7L, RTX-14709H, 11R24 5 on Alum & Steel, Wet Line, Still A Good Truck, Great Starter Truck Or On The Farm! **\$11,000**

1992 Parker Alum. Dump (3rd Axle), 34'x60" Alum on 34' Steel Frame, 3rd Axle **\$17,000**

1996 Ford Backhoe 2150 Hrs, 655D, 4WD, X-Hoe Cab, Nice **\$28,500**

\*\* All Dump Units Have Watertight Gates and Turn Buckles, Roll Tarps, Trailers Also Have 2 Way Gates and 11R24.5 Tires

\*\* Please Call And A More Detailed Listing Will Be Provided By Fax

\*\* All Units Very Well Maintained.

**ELGIN CARTAGE 800-776-4383**

**Shown by Appointment.**

**STEP AHEAD AUTO WORLD**

1995 Spring Road  
Carlisle, PA 17013  
(717) 258-1150

**Financing Available**



1998 Ford F700, 7.0, AT, AC, 115,000 Mi., 24' Box, Look **\$8,995**



1998 Ford E350 15' Box Truck, yellow, 5.4 V-8, Auto., AC, 4 To Choose From, Starting @ **\$7,990 & Up**



1996 Ford F350 Ext. Cab 4x2 Dually XLT, Powerstroke, AT, 105,000 Mi., Nice Truck **\$13,995**



1996 Dodge 2500 4x4 Cummins Diesel, AT, AC Only **\$14,995**



1995 Dodge 3500 Dually 4x4 Cummins Diesel, Stick, AC, Only 95,000 Mi. Only **\$14,995**

**STD. TRANS.**



1994 Ford F250 XL 4x4, Tutone, 5.8 V8, AT, PS, PB, AC, Serviced and Inspected, Ready for Work, Check It Out. **Reduced To \$9,990**



1994 Dodge SLT 3500 4x4 Dually Cummins Diesel, AT, PS, PB, PW, PDL, AC, Stereo, Hard To Find One Like This One. **\$15,995**

**ONLY 39,000 MI.**



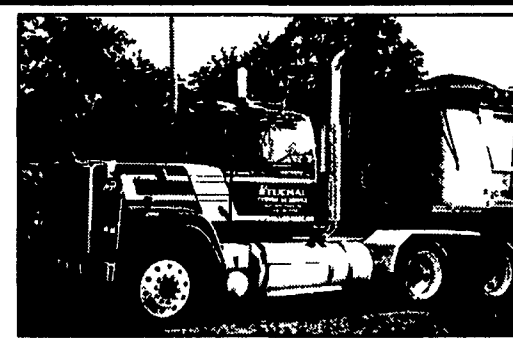
1991 Chevy 3500 Utility Bed; 6.2 Diesel; Auto; Inspected & Serviced. **4,995**

**Straight Sale Price • Straight Sale Prices**

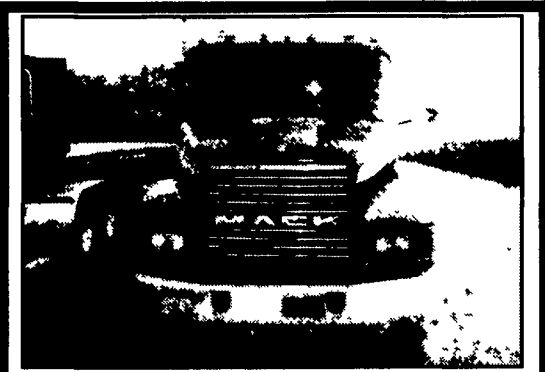
**We're Hog Wild About Our PORK PRODUCERS**



**Farmer's Dump, 66 Ford F-500**  
15,000 GVW, 12 Ft. Stake  
**\$5,900**  
Car Village - Lebanon  
**1-800-650-1420**



'87 Mack Superliner, E9-500, 9 spd, AC, air ride, wet line, many recent repairs, good shape & works daily.  
**724/301-0844.**



(2) 1990 CH Mack's 359 speed, air ride, 1 with wetline  
**610-255-5211**



**1991 Sundowner 2-Horse Gooseneck w/Dressing Room Only \$3,500**

**1990 18 Ft. 3-Horse Slant Trailer**

w/Dressing Room & Mats **\$2,775**

also **Corn Pro Demo 3-Horse Slant, 2001 Model Only \$3,595**

**STOCK TRAILERS SKID LOADER TRAILERS**

Also Nice Selection of Pequea Trailers in Stock



Rt. 22 West, Fredericksburg, PA  
**717-865-7575**

**BUY, SELL, TRADE OR RENT THROUGH THE CLASSIFIED ADS IN Lancaster Farming**

**PHONE: 717-626-1164 OR 717-394-3047 FAX: 717-733-6058**

**Mon., Tues., Wed., Fri. 8 AM to 5 PM Thurs. 7 AM to 5 PM**

**THE HONDRU EXPERIENCE**

**OVER 200 TRUCKS AVAILABLE FROM OUR 4 DEALERSHIPS**

**E-TOWN CHEVROLET**

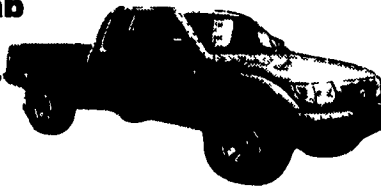
Oldsmobile Pontiac  
Route 230 E-Town • 717-361-7776  
877-924-6644

**2000 TOYOTA TACOMA**

**Ext. Cab**

**SR5**

Off-Road, 4x4, V-6, 5 Speed



**97 FORD F150 XLT**

4x4 Club Cab, V-8, Auto, AC, Equipped

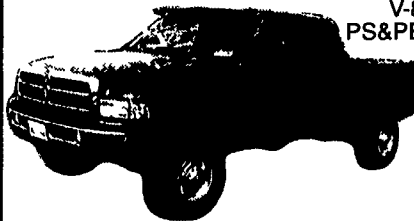


**E-TOWN DODGE**

Route 230 E-Town • 717-367-6644  
877-924-6644

**2001 DODGE RAM Quad Cab**

2500 Series, 4x4 V-8, Auto PS&PB, AC, T&C



- 01 Dodge Ram SLT, Reg Cab, V-8, Auto, AC, PW&L, PS&PB, T&C, Off Road Pkg
- 00 Ford F150 4x4 Off Road Pkg, SLT 5 4L V-8, Quad Cab, Well Equipped
- 99 GMC Sierra Club Cab, SLE, 4x4
- 99 Ford F150 Lariat, 4x4, Quad Cab, V8, Leather, Well Equipped

All prices Include Rebates, Exclude Tax, Tag and \$55 Dock Fee

**LOADS OF USED PICKUPS CALL ANY STORE FOR DETAILS Visit us @ www.hondruauto.com**

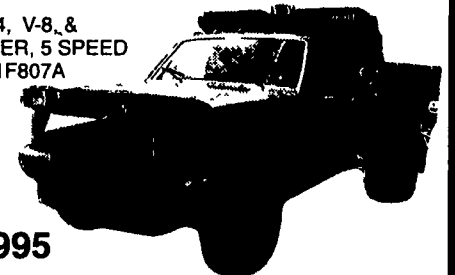
**OVER 10 CHASSIS IMMEDIATELY AVAILABLE FOR BODY INSTALLATION AT OUR LOCAL BODY COMPANIES!**

**PHILLIPS FORD**

Route 72 Manheim • 717-665-3551  
877-597-3551

**1991 FORD F350 DUMP**

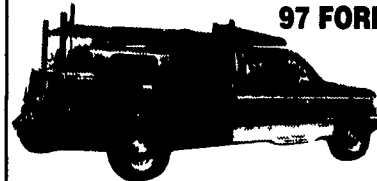
4X4, V-8, & SPREADER, 5 SPEED #1F807A



**\$9,995**

**97 FORD F-250 4x4**

Powerstroke Diesel, Utility Body



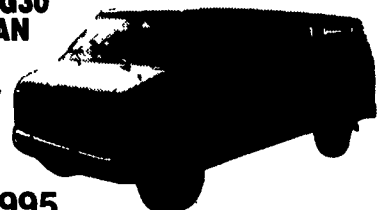
**\$16,995**

**MANHEIM CHRYSLER GMC**

Route 72 Manheim • 717-665-2473  
877-603-2473

**95 CHEVY G30 SPORT VAN**

V-8, Auto, AC, Low Miles, Very Nice Cond. List \$10,995



**Sale \$8,995**

	LIST	SALE
92 Chevrolet S10 Pickup 2214A	\$6,995	<b>\$4,995</b>
00 Dodge Caravan 2217A	\$15,995	<b>\$12,995</b>
97 Chevrolet Venture 2G199B	\$10,995	<b>\$8,995</b>
96 Dodge Ram P/U 1500 2G235A	\$14,495	<b>\$12,995</b>
99 Pontiac Montana 2G308A	\$14,995	<b>\$12,495</b>
01 Ford Explorer SPO 2G318A	\$21,595	<b>\$18,995</b>
98 Chevrolet C/K 1500 2G322A	\$18,495	<b>\$15,495</b>
00 Lincoln Navigator 2G323A	\$30,495	<b>\$28,495</b>
98 Plymouth Grand Voyager 2M033A0	\$13,495	<b>\$11,495</b>