

Youth Gather 'Under The Big Top' During Junior Angus

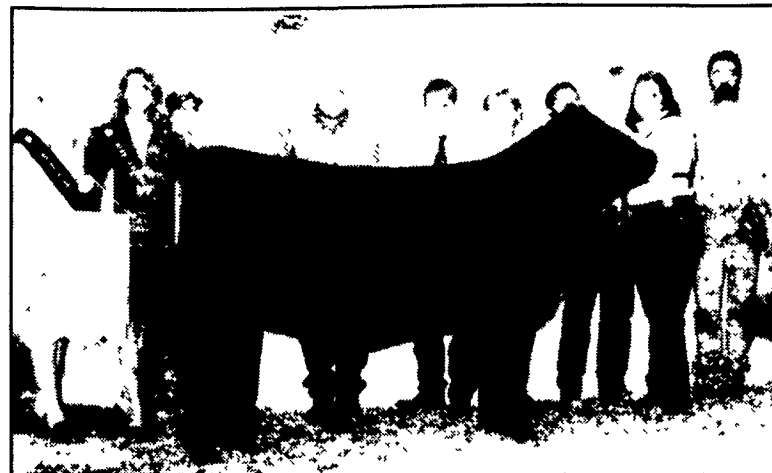
MILWAUKEE, Wis. — Members of the National Junior Angus Association from across the nation gathered to exhibit 950

entries in the 2002 National Junior Angus Show recently in Milwaukee, Wis.

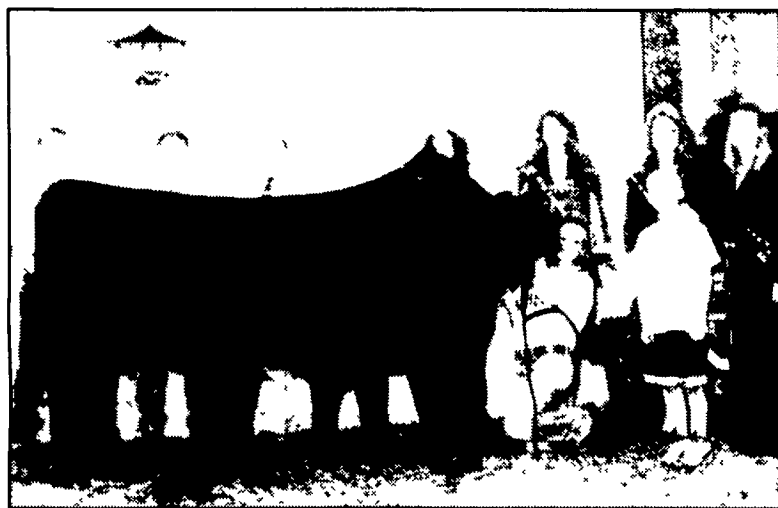
The Wisconsin Angus Association and Wisconsin Junior Angus

Association hosted this year's event "Angus Under the Big Top," where 550 exhibitors showed their cattle in the largest single-breed beef cattle show in the world.

Jack Ward, Langrange, Ind., evaluated the 558 owned females. Charlie Boyd II, Mays Lick, Ky., judged the 188 bred-and-owned females, 52 bred-and-owned bulls and 46 cow-calf pairs. Doug Parrett, Urbana, Ill., evaluated the 64 steers. In the carcass steer competition, juniors entered 42 steers.



Megan Weisel, Louisville, Ohio, led the reserve grand champion owned female, WAF Essie 1088, at the National Junior Angus Show.



Megan Weisel, Louisville, Ohio, led the grand champion owned cow-calf pair at the National Junior Angus Show, Dameron PVF Proven Queen010 and a bull calf sired by P V F New Horizon 001.



Members of the National Junior Angus Association (NJAA) conducted their annual meeting during the National Junior Angus Show. NJAA voting delegates elected six new directors to the board, and directors starting their second term filled the six officer positions. Seated from left includes Mercedes Danekas, Wilton, Calif., chairman; Lana Myers, Jennings, La., vice chairman; Brian Howell, Union City, Ind., communications director; Brandon Walker, Lexington, Ga., Foundation director; Lacey Robinson, Montgomery City, Mo., leadership director; and John McCurry, Burrton, Kan., membership director. Newly elected directors standing from left include Trevor Kuipers, Onarga, Ill.; Jennifer Beck, Louisburg, N.C.; Jamie King, Tiffin, Ohio; Amy Wolfrey, White Post, Va.; Jamie Hower, Bethlehem, Pa.; and Cortney Collins, Tanner, W.Va.

FOR THE FINEST SEED AND CUSTOMER SERVICE

"Your Regional Advantage"

DOEBLER'S DELIVERS!

FOR FALL SEEDING OF ALFALFAS AND GRASSES

see your Doebler Dealer for details of our

FORAGE INTO FALL 2002 Program

Customers receive a 2% CASH DISCOUNT on orders of alfalfas & grasses. Orders must be processed between July 15 and September 2, 2002!

FOR THE NEW 2003 SALES SEASON

THIRTEEN NEW HYBRID CORN VARIETIES

from 84 to 122 days RM

conventional

YieldGard® Roundup Ready® High Cycle®

Doebler's own Silage Only

and... a new 111 day

Roundup Ready®/Silage Only!

THREE NEW & IMPORTANT FORAGE GRASSES

a tenacious variety of TIMOTHY

a superiorly performing variety of ORCHARDGRASS

a surprisingly new pasture mix especially for HORSES

800.853.2676

doebler.com

Stop by and talk with a Doebler representative at

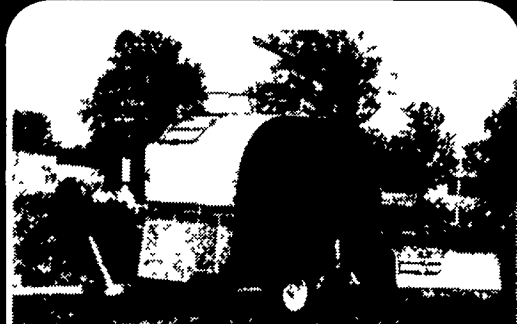
AUGUST 20-21-22

AG PROGRESS

We Salute Our Farming Industry

AG-BAG

OFTEN IMITATED -- NOT BETTERED



New Interchangeable Tunnels

Available from Ag-Bag:

- Truck unloading BAGGERS
- Wagon unloading BAGGERS
- Ag-Bag Bags; 6'x100'-12'x500'
- Bunkers Covers
- Mighty Bites & Much More
- Square Bale Tubers
- Round Bale Tubers
- Bale Tubes; 4,5,8 & 9'
- Ag-Bag Plus Inoculant

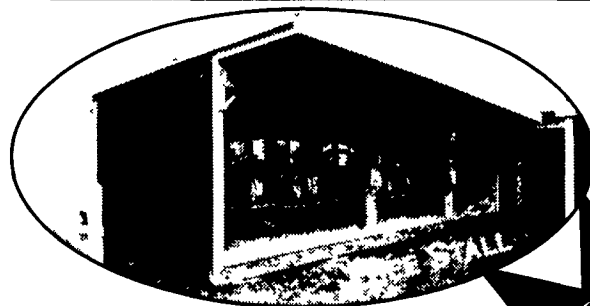
1-800-334-743

AG-BAG
INTERNATIONAL



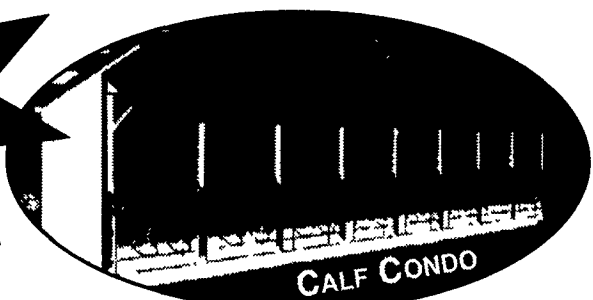
Allensville Planing Mill

PRE-BUILT FREE STALLS & CALF CONDOS



- Up to 10 stalls 4' x 8' •
- Treated Skids •
- 3" Sloped Floor •
- Wood Brisket Boards •
- Yellow Pine Floor •
- Rubber Mats or Mattresses •

Come See Our Display At Ag Progress Days



- A shelter where you regulate the air flow to suit the changeable seasons.
- Constructed of top quality, all wood T1-11 exterior plywood siding which guarantees many years of continued reliable use.



For more Information and Quotes...Call "Vic" at APM
(717) 483-6386 (800) 322-1306 ext. 252 (717) 994-2317 (cell)
e-mail: vkconner@apm-inc.net Fax: (717) 483-6542