

PRODUCE MARKETS

Philadelphia Fruit

Terminal Market
August 14, 2002

Report Supplied By USDA

CITRUS FRUITS - CLEMENTINES: OFFERINGS LIGHT 10 kg crts SF 64s 14.00 68s 14.00 -**GRAPEFRUIT:** MARKET STEADY ctns CA Shprs 1st Grade Red 27s 13.00 32s 13.50 36s 14.00 40s 13.50-15.00 48s 13.00 56s 12.00 -**LEMONS:** MARKET STEADY ctns CA Shprs 1st Grade 95s 43.00 115s 43.00 Shprs Choice 95s 21.00 115s 22.00 140s 24.00 SP Class I 70s 16.00 80s 16.00 90s 17.00 100s 17.00 -**LIMES:** MARKET LOWER 10 lb ctns MX 36s 5.00 42s 5.75 48s 5.50 54s 4.00-5.00 63s 4.00-5.00 40 lb ctns FL 150s ord cond 5.00-6.00 MX 130s 17.00 150s 17.00 175s 10.00-13.00 mostly 10.00-12.00 few 8.00 200s 10.00-13.00 mostly 10.00 few 18.00 -**MISC CITRUS:** OFFERINGS INSUFFICIENT TO QUOTE -**ORANGES:** MARKET SLIGHTLY HIGHER ctns CA Shprs 1st Grade Valencia 48s 14.00 56s 13.50-15.00 mostly 14.00 72s 13.50-15.00 mostly 14.00 88s 13.50-15.00 mostly 14.00 113s 13.50-14.00 mostly 13.50 Shprs Choice Valencia 56s 13.00-14.00 mostly 13.00 72s 13.00-14.00 mostly 13.00 88s 13.00-14.00 mostly 13.00 113s 13.00 -**TANGELOS:** OFFERINGS NONE -**TANGERINES:** OFFERINGS NONE -**TEMPLES:** OFFERINGS NONE -**BERRIES - BLUEBERRIES:** MARKET HIGHER flts 12 1-pt cups with lids MI med-lge 16.00-18.00 fr cond 14.00-16.00 -**CRANBERRIES:** OFFERINGS NONE -**MISC BERRIES:** flts 12 6-oz cups with lids CD Blackberries 20.00 OR Blackberries 24.00-25.00 -**RASPBERRIES:** flts 12 6-oz cups with lids CA Red 20.00 -**STRAWBERRIES:** MARKET LOWER flts 12 1-pt bcks CA med-lge 15.00-16.00 one label 20.00 -**MELONS - CANTALOUPS:** MARKET CA LOWER, OTHERS SLIGHTLY HIGHER. 1/2 ctns CA 9s 7.00-9.00 fr cond 6.00 12s 7.00-8.00 mostly 7.00 fr cond 6.00 ord cond 2.00 15s 7.00-8.00 18s 7.00 24

inch bins MD 90s 60.00-70.00 100s 60.00-70.00 110s 60.00-70.00 130s 60.00-70.00 36 inch bins MD 165s 80.00 flt ctns NJ 6s 5.00 8s 5.00 9s 5.00 10s 5.00 11s 5.00 -**HONEYDEWS:** MARKET LOWER 1/3 ctns CA 5s 7.00-8.50 mostly 7.00-7.50 fr cond 6.00 6s 7.00-8.50 mostly 7.00-7.50 fr cond 6.00 8s 7.50 -**MISC MELONS:** 1/3 ctns CA Casaba 4s 8.00-11.00 Crenshaw 3s 11.00 5s fr cond 5.00 Juan Canary 5s 8.00-11.00 Sharlyn 4s 11.00 5s 8.00 Orange Flesh 5s 11.00 Galia 6s 8.00 -**WATERMELONS:** MARKET ABOUT STEADY 24 inch bins NJ Red Flesh Seedless Type 40s 100.00 30 inch bins MD Sangria Type 50s 80.00-90.00 36 inch bins NJ Crimson Sweet 50s 80.00 Sugar Baby 2s 80.00 bins MD Red Flesh Seedless Type per 1100 lb bin 150.00 per 700 lb bin 125.00 Sangria Type per 1400 lb bin 140.00-150.00 per 1100 lb bin 125.00-135.00 per melon IN Red Flesh Seedless Type 14-16 lb 1.50-2.00 MD Sangria Type 20-22 lb 1.00-1.50 -**NON-CITRUS FRUITS - APPLES:** MARKET ABOUT STEADY ctns trypk CA U.S. ExFcy Royal Gala 80s 38.00 88s 34.00 100s 32.00 CL BOAT Crispin 64s 20.00 72s 20.00 Pink Lady 70s 20.00 80s 20.00 cat I Granny Smith 80s 28.00 Braeburns 70s 24.00 NZ BOAT CLASS I Fuji 64s 28.00 SF BOAT Granny Smith 90s 26.00 CONTROLLED ATMOSPHERE STORAGE ctns trypk WA WAExFcy Red Delicious 56s 19.00 64s 18.00-19.00 one label 26.00 72s 19.00 80s 18.00-19.00 one label 26.00 88s 18.00-19.00 mostly 18.00-18.50 100s 18.00-19.00 mostly 18.00-18.50 113s 18.00 125s 18.00-18.50 Golden Delicious 80s 30.00 88s 28.00-28.50 one label 30.00 100s 26.00-26.50 113s 24.00 Granny Smith 72s 24.00 80s 24.00 88s 24.00 one label 30.00 100s 20.00-22.00 113s 20.00 -**APRICOTS:** OFFERINGS INSUFFICIENT TO QUOTE -**AVOCADOS:** MARKET CA HIGHER, FL LOWER. ctns 2 lyr CA Hass 48s 43.00-45.00 mostly 43.00-44.00

60s 40.00 ctns/flts 1 lyr FL Various Greenskin Varieties 12s 8.00 -**BANANAS:** MARKET STEADY 40 lb ctns IMPORT 10.50 fr qual 9.00-10.00 sml 7.00-8.00 petite 13.50 40 lb ctns bagged IMPORT 10.50 -**CHERRIES:** 15 lb ctns OR OROne Rainier 10 1/2 row sz & lgr 55.00 20 lb ctns WA WAOne Van 10 1/2 row sz & lgr 58.00 ctns 15 16-oz filmbags WA WAOne Rainier no sz mkd 45.00-50.00 -**FRUITS OTHER:** ctns 12 1-pt bcks CA Figs Black Mission 14.00-15.00 some 18.00 Calimyrna 18.00 Kadota 13.00-14.00 some 18.00 2 kg (4.4 lb) IS Lychee Nuts 8.00-10.00 -**GRAPES:** MARKET ABOUT STEADY 21 lb lugs CA U.S. One Thompson Seedless lge 18.00 19 lb lugs bgd CA U.S. One Thompson Seedless exlge 16.00-18.00 mostly 16.00 one label 20.00 lge 12.00-15.00

mostly 13.00-15.00 med-lge 10.00-12.00 fr cond 8.00 med 8.00-9.00 Flame Seedless lge 16.00-17.00 mostly 16.00 one label 19.00 med-lge 14.00-16.00 mostly 14.00-15.00 med 10.00-13.00 mostly 12.00 Black Beauty Seedless lge 14.00 occ 13.00 Red Globe lge 18.00 16.00 occ 15.00 Fantasy med-lge 18.00 fr cond 7.00 Princess lge 10.00-12.00 med-lge 9.00-10.00 20 lb lugs wrpd CA U.S. One Black Seedless med-lge 17.00 -**KIWIFRUIT:** MARKET

1 lyr MX Keitts 7s 7.50 8s 6.00-7.50 mostly 7.00-7.50 9s 6.00-7.50 10s 6.00 Ataulfo 16-22s fr cond 5.00 PR Keitts 7s 6.00 8s 6.00 50 lb ctns FL Green Cooking Type 75.00-80.00 -**NECTARINES:** MARKET ABOUT STEADY ctns 2 lyr trypk CA California Well Matured Various Yellow Flesh Varieties 42s 16.00 Various White Flesh Varieties 42s

(Turn to Page A13)



A Dry Cow Booster That Costs 7¢ a Day

Hoffmans Horse and Cattle Powder is an ideal tonic for cows over freshening. Feed 6 wks. before freshening. 1 Tablespoon a day. (Two weeks over freshening, feed 1 Tablespoon in the morning & 1 Tablespoon in evening)

Cows will clean better after freshening. Cows have a lower somatic cell count and will have less mastitis problems. Great for reproduction tract and cows will cycle better after freshening. Will help rumen function over freshening. Less feet problems and less stress.

This is an over-all good booster if fed to dry cows, and it will pay you big dividends.

Sugar Valley Collar Shop
18 Wagon Wheel Lane
Loganton, PA 17747

Elvin Zimmermann
18051 Ridgewood Ave
Barnett, MO 65011
573-378-2658

D & J Farm Store
65 Hess Rd
Quarryville, PA 17566

Bird-In-Hand Farm Supply
200 Maple Ave
Bird-In-Hand, PA 17505

Daniels Farm Store
324 Glenbrook Rd
Leola, PA 17540
717-656-6982

Gideon F. King
5465 Elam Rd
Kinzer, PA 17535

Gap Repair Shop
994 Gap Rd
Kinzers, PA 17535
717-442-4781

We need more dealers for different areas. If interested, please write to: J.L. Hoffman, 183 Stonyhill Rd., Quarryville, PA 17566

ELIZABETHTOWN FAIR

29th Annual

"An American Tradition"

August 19 - August 24, 2001

Monday 6 PM to 11 PM
Tuesday-Saturday 10 AM to 11 PM
Rides Open @ 4 PM Daily,
Saturday @ Noon
Free Entertainment Nightly

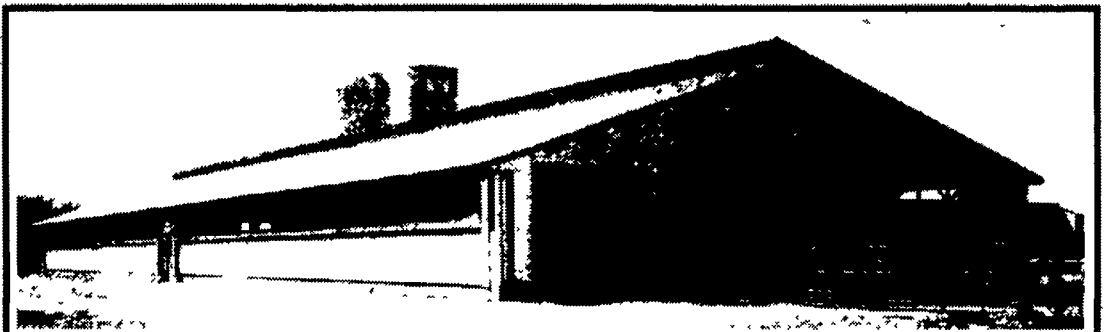
SALE OF CHAMPIONS THURS., AUG. 22 6:30 PM

1 Mile East of Center Square, Elizabethtown
Email: etownfair@patairs.org
Web Site: www.patairs.org/etownfair

See Our Products On Display At AG PROGRESS DAYS August 20 - 21 - 22 • We're Located On W. 9th Street



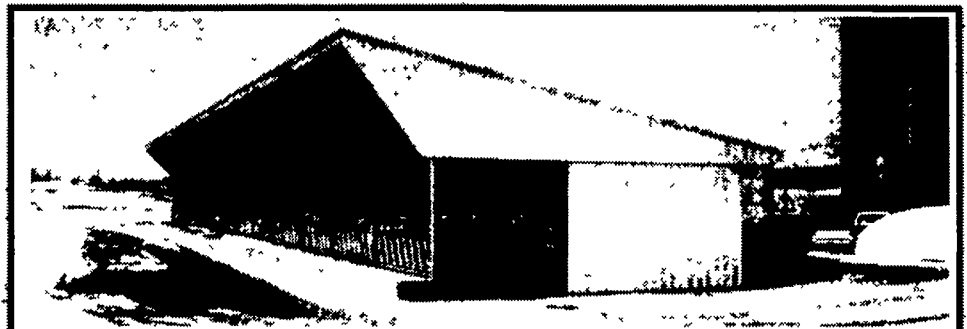
477 East Farmersville Rd.
New Holland, PA 17557
(717) 355-2361



Concrete Slatted Free Stall Barn



Slatted Beef Barn



Slatted Heifer Barn



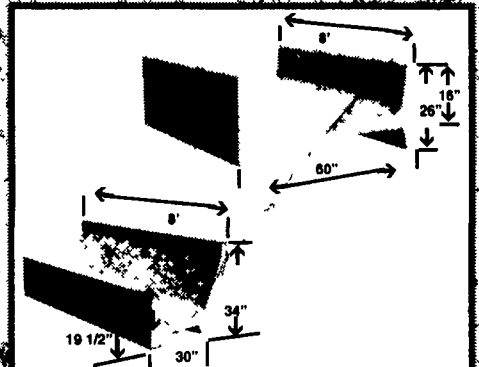
Precast T-Wall Concrete Bunker Silos or commodity buildings built to suit your needs. Bunkers available in 8 Ft. or 12 Ft. High.



Slatted Free Stall Barn



Round Concrete Watering Troughs, SCS Approved



Concrete Feed Bunks