

**Delmarva Broiler/Fryer**  
ATLANTA, GA.

August 7, 2002

Report Supplied By USDA

Movement of ready to cook whole birds was mostly fair. Offerings often varied in size and/or volume available, but were generally fully sufficient for immediate needs. Live supplies were mostly moderate; weights were irregular in a full range of light to heavy. Processor schedules were light to moderately heavy, mostly moderate. Less than trucklot asking prices were unchanged at 48 to 60 cents. Trade sentiment was about steady to steady. In the parts complex, offerings were generally noted as at least adequate and having moved into a bit closer/better balance on several items.

ESTIMATED SLAUGHTER OF BROILER/FRYERS IN DELMARVA (000)

ESTIMATED ACTUAL AVG. WEIGHT ACTUAL AVG. WEIGHT  
08/07 08/05 08/05 07/31 07/29  
2,392 2,132 5.14 2,353 5.07

BROILER/FRYER CURRENT NEGOTIATED PRICES FOR IMMEDIATE DELIVERY INCLUDES MOSTLY MULTIPLE-DROP SHIPMENTS OF BRANDED AND WING TAGGED TO NEW YORK CITY FROM DELMARVA BRANDED U.S. GRADE A RANGE 49-64 WEIGHTED AVERAGE 51.45 NO. OF BOXES 6,168  
6 of 8 plants reporting.

**Young Turkey Parts And Bulk Meat**

Des Moines, Iowa  
August 6, 2002

Report Supplied By USDA

NATIONAL YOUNG TURKEY PARTS AND BULK MEAT, Frozen, unless specified, cents per lb, delivered first receivers, part and full trucklots, as of August 6, 2002.

Trade sentiment on tom drums was steady to instances fully steady. Demand was slow to moderate with some sized product receiving a better call than un-sized. Tom drum offerings in a full range with availability some what dependant upon sizing requirements. Tom full-cut wing trade sentiment was steady to instances fully steady. Demand slow for the light to adequate offerings. The market tone was barely steady on necks for the light activity. Offerings available. Domestic trading activity was slow on all items. Export trading activity centered on a moderate volume on frozen thigh meat and on a light volume of tom drums.

DOMESTIC TRADING: Breasts, 4-8 lbs: Grade A - avg. 96.00, Fresh avg. 154.00; Plant Grade - avg. 90.88. DRUMSTICKS: TOM - avg. 20.00; HEN - avg. 19.34. WINGS, FULL-CUT: TOM - avg. 21.70; HEN - avg. 22.63. WING, V-TYPE: TOM - avg. 28.00; HEN - avg.

52.00. NECKS: TOM - avg. 14.00; HEN - avg. 16.50. BREASTS, B/S, TOM - avg. 133.00; Fresh avg. 156.33. THIGH MEAT - avg. 50.00. BREAST TRIM MEAT - 88.00. SCAPULA MEAT - avg. 75.96. TENDERLOINS - avg. 117.00. DESTRAPPED TENDERS - none; Fresh avg. 136.67. WING MEAT WITH SKIN - avg. 54.00. MECHANICALLY SEPARATED - none; Fresh avg. 19.00.

EXPORT TRADING: DRUMSTICKS: TOMS - avg. 20.55. WINGS, FULL-CUT: TOM - none. WINGS V-TYPE: - TOMS - none. TAILS - avg. 16.00. MECHANICALLY SEPARATED - avg. 20.25. THIGH MEAT - avg. 44.66.

**Shippensburg Hay Auction**

Shippensburg, Pa.

Report Supplied By Auction

August 3 and 6, 2002

Hay—Straw—Grain

36 LOTS.

ALFALFA: 82.00-150.00.

MIXED HAY: 102.50-155.00.

TIMOTHY: 74.00-125.00.

BROMEGRASS: 77.50-127.50.

STRAW: 40.00-60.00.

OATS: 1.30-1.90 BU.

RYE: 1.40.

**Kirkwood Hay**

Kirkwood, Pa.

Report Supplied By Auction

Tuesday, August 6, 2000

31 LOTS.

MIXED HAY: 1ST CUTTING

77.00-117.00, 2ND 100.00-115.00.

TIMOTHY: 97.00-210.00.

ALFALFA: 1ST CUTTING

120.00-126.00, 2ND 100.00-137.00.

CLOVER: 115.00.

GRASS: 122.00-200.00.

WHEAT STRAW: 97.00-110.00.

BARLEY STRAW: 70.00-97.00.

RYE STRAW: 127.00.

SALE DAY TUES. 10 A.M.

**Livestock Cooperative Auction Market Of North Jersey**

Hackettstown, N.J.

Report Supplied By Auction

August 6, 2002

Hay—Straw—Grain

ALFALFA: 5 LOTS, 1.70-3.50 BALE.

MIXED HAY: 5 LOTS, 2.20-3.70 BALE.

TIMOTHY: 3 LOTS, 1.00-2.30 BALE.

GRASS: 7 LOTS, .50-3.50 BALE.

MULCH: 7 LOTS, 1.00-1.20 BALE.

OAT STRAW: 2 LOTS, 2.50.

RYE STRAW: 2 LOTS, 1.90 AND

2.40.

SHELLED CORN: 1 LOT AT 4.10.

OATS: 1 LOT AT 5.10.

33 LOTS TOTAL.

**Eastern Cornbelt Direct Feeder Pig Weekly**

Springfield, Ill.

August 2, 2002

Report Supplied By USDA

Eastern Corn Belt Direct Feeder Pig Weekly Summary (includes pig prices on negotiated, contract and formula basis) — FEEDER PIGS: Total receipts: 17,843, negotiated 1,000; last week 17,717. Trends: SEW 10 lb pigs and feeder pigs were steady to 1.00 lower. Trading activity was light for light to moderate offerings.

‡FOB Eastern Cornbelt - Illinois, Indiana, Ohio, Michigan. Receipts: 8,958; last week 7,897.

EARLY WEANED PIGS, 10 LB BASIS, estimated 50-54% lean value: Lot size under 250: 125 head, 26.15; lot size 250-750: 4,701 head, 13.00-30.15, wtd. avg. price 25.47; lot size 750 or more: 1,500 head, 22.00. Total Composite: 6,326 head, 13.00-30.15, wtd. avg. price 24.66.

PIGS, 40 LB BASIS, Estimated 50-54% lean value: Lot size 750 or more: 1,007 head, 17.50.

PIGS, 50 LB BASIS, Estimated 50-54% lean value: Lot size under 250 lb 200 head, 23.00; lot size 250-750: 1,425 head, 29.47-31.02, wtd. avg. price 30.07. Total Composite 1,625 head, 23.00-31.02, wtd. avg. 29.20.

‡FOB prices quoted on per head basis "picked up" at sellers farm; prices do not include freight.

**Eastern Corn Belt Direct Hogs**

Des Moines, Iowa

Aug. 6, 2002

Report Supplied By USDA

EASTERN CORN BELT DIRECT DAILY HOGS, for Tues., Aug. 6, as of 1:30 p.m.

CURRENT VOLUME TODAY: Producer Sold: Negotiated Actual: 14,221; head; Other Market Formula: 4,977; Swine or Pork Market Formula: 37,748; Other Purchase Arrangement: 3,299; Packer Sold (All purchase types): Actual today: 541.

NEGOTIATED PURCHASES (Including packer sold): BARROWS AND GILTS: 13,050 head. Compared to prior day's close, mostly 1.00 lower. Base Market Hog, 185 lb Carcass Basis, Plant Delivered (.9-1.1 inch backfat, 6 sq. in. loin/2.0 depth): Range: \$40.75-52.03, wtd. avg. \$47.69.

Prior week's average market hog, (measurements based on slaughter data submitted): 189.9 lb carcass based, plant delivered (0.81 inch backfat, 6.6 sq. inch loin/2.20 inch loin depth) FFL: 50.10%; price range: \$44.75-55.53.

Purchase volume by state of origin: Alabama 356; Georgia 836; Illinois 23,032; Indiana 20,905; Kentucky 1,686; Maryland 81; Michigan 8,167; Mississippi 2,310; New York 367; North Carolina 7,478; Ohio 7,317; Pennsylvania 1,855; South Carolina 502; Tennessee 1,145; Virginia 240; Wisconsin 3,075.

**Pa. Grain Report**

August 5, 2002

Report Supplied By PDA

COMPARED WITH LAST MONDAY'S MARKET FOR EASTERN AND CENTRAL PENNSYLVANIA: Corn active, mostly .10 higher. Wheat steady to firm. Barley and Oats mostly steady. Soybeans, active market continues with prices .20 to .30 higher. Ear Corn steady to 5.00 higher. PRICES PAID DELIVERED TO DEALERS DOCK, All prices per bushel, except Ear Corn per ton. SOUTHEASTERN PENNSYLVANIA CORN No. 2-y, 2.77-2.90 few 2.70, avg. 2.82; contract for harvest 2.60-2.73. WHEAT No. 2, 3.37-3.66, avg. 3.44; contract for harvest 3.11. BARLEY No. 3, 1.40-1.75, avg. 1.55. OATS No. 2, 1.80-2.10, avg. 2.00. SOYBEANS 5.47-5.61, avg. 5.56; contract for harvest 4.93-5.21. Gr. Sorghum, 2.68. Ear Corn 75-87.00, avg. 79.60.

**SOUTH CENTRAL PENNSYLVANIA**

CORN No. 2-Y, 2.50-2.90, avg. 2.69; WHEAT No. 2, 2.85-3.25, avg. 3.02; BARLEY No. 3, 1.30-1.80, avg. 1.47; OATS No. 2, 1.40-1.80, avg. 1.55; SOYBEANS No. 1, 5.30-5.69, avg. 5.39. EAR CORN 60.00-83.00, avg. 73.60.

**WESTERN PENNSYLVANIA**

CORN No. 2, 2.35-2.70, avg. 2.47; WHEAT No. 2, 2.70-3.07, avg. 2.79; BARLEY No. 3, 1.86; OATS No. 2, 1.50-1.75, avg. 1.64; SOYBEANS No. 1, 5.34; EAR CORN 69.00-77.00, avg. 75.00.

**CENTRAL PENNSYLVANIA**

EAR CORN No. 2, 2.60-2.95, avg. 2.80; WHEAT No. 2, 2.80-3.20, avg. 2.95; BARLEY No. 3, 1.35-1.50, avg. 1.42; OATS No. 2, 1.60-2.00, avg. 1.76; SOYBEANS, No. 1, 5.28-5.60, avg. 5.41; EAR CORN 65.00.

**LEHIGH VALLEY**

CORN No. 2-Y, 2.75-2.85, avg. 2.82; WHEAT No. 2, 3.25-3.62, avg. 3.46; BARLEY, No. 3, 1.40-1.63, avg. 1.51; OATS No. 2, 1.60-2.00, avg. 1.77; SOYBEANS No. 1, 5.60-5.80, avg. 5.70; GRAIN SORGHUM 3.00-3.50, avg. 3.25; EAR CORN 80.00.

**EASTERN AND CENTRAL PENNSYLVANIA**

CORN No. 2-y, 2.60-2.90, avg. 2.71; month ago 2.55; year ago 2.28. WHEAT No. 2, 3.20-3.66, avg. 3.25; month ago 2.99; year ago 2.53. BARLEY, No. 3, 1.40-1.75, avg. 1.51; month ago 1.44, year ago 1.36. OATS No. 2, 1.60-2.00, avg. 1.86; month ago 1.83, year ago 1.40. SOYBEANS No. 1, 5.30-5.61, avg. 5.51; month ago 5.11; year ago 4.46. EAR CORN 65.00-87.00, avg. 69.71; month ago 70.60; year ago 64.35.

**NORTH CENTRAL OHIO**

(Prices FOB Truck): CORN

2.47-2.50; WHEAT

3.23-3.36; OATS

1.25-1.70; SOY-

BEAN MEAL: bulk

44% 186.00-186.80;

b u l k 4 8 %

195.00-196.80.

**Westminster Hay**

Westminster, Maryland

Report Supplied By Auction

Tuesday, August 6, 2002

Hay—Straw—Grain

115 LOTS.  
ALFALFA: 1.20-5.10 BALE, 23.00 LARGE ROUND.  
TIMOTHY: .70-4.50 BALE, 20.00-24.00 LARGE ROUND.  
MIXED HAY: 1.00-4.30 BALE.  
GRASS: .50-2.10 BALE, 20.00-29.00 LARGE ROUND.  
STRAW: .90-2.60 BALE.

**Dairy Products Prices Highlights**

Washington, D. C.

August 2, 2002

Report Supplied By NASS/USDA  
DAIRY PRODUCTS PRICES HIGHLIGHTS:

CHEDDAR CHEESE prices received for US 40 pound Blocks averaged \$1.07 per pound for the week ending July 27. The price per pound decreased 1.0 cent from the previous week. The price for US 500 pound Barrels adjusted to 38 percent moisture averaged \$1.07 per pound, up 0.7 cents from the previous week.

BUTTER prices received for 25 kilogram and 68 pound boxes meeting USDA Grade AA standards averaged \$1.01 per pound for the week ending July 27. The U.S. price per pound increased 2.2 cents from the previous week.

NONFAT DRY MILK prices received for bag, tote and tanker sales meeting USDA Extra Grade or USPH Grade A standards averaged 90.4 cents per pound for the week ending July 27. The U.S. price per pound decreased slightly from the previous week.

DRY WHEY prices received for bag, tote and tanker sales meeting USDA Extra Grade standards averaged 15.4 cents per pound for the week ending July 27. The U.S. price per pound increased 0.1 cents from the previous week.

**Metal Roofing & Siding**

Since 1948



**A.B. Martin Roofing Supply**

Why Pay More - For Less

BUY DIRECT • WE MANUFACTURE

Roofing & siding in the following

Aluminum • Galvanized • Galvalume

18+ Color Painted, #1 & #2 Material

Low Prices - Fast Delivery, Free Literature

Ephrata, PA 1-800-373-3703

Newville, PA 1-800-782-2712

(formerly Zimmerman Roofing)

**Silo Liners Hoop Kits**

Available In Sizes 10' To 20'

**Silo Caps Ag Bags Lastic Tubes**

Call For A Competitive Price

**DANIEL'S FARM STORE**

324 Glenbrook Rd. Leola, PA 17540 717-656-6982  
Between Leola & Talmage on Rt. 772



**Diffenbach Auction Inc.**

100 West Jackson Street • New Holland, Pennsylvania 17557

Office: (717) 355-7253 • FAX: (717) 355-9547

www.acauction.net

**HAY & GRAIN SALE EVERY MONDAY - 10:00 A.M.**

WED	SEPT 4	WINROSS, HESS, FARM TRAC & TOYS	6 30 PM
FRI	SEPT 13	TRACTORS, FARM EQ & SUPPLIES	9 00 AM
TUE	SEPT 24	QUILT, CRAFT & BUGGY	9 00 AM
WED	SEPT 25 (?)	QUILT & CRAFT	9 00 AM

EQUIPPED FOR AN AUCTION AT YOUR PLACE OR OURS  
ALAN DIFFENBACH AUCT. -AU2258-L

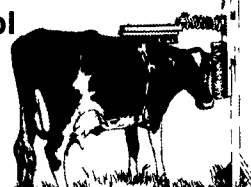
**CATTLE SCRATCHER**

Apply oil-based fly and pest control

And provide comfortable

brushing action to the animal.

Remove lice, flies, winter hair



We Ship Parts Daily UPS • 24 Hour Service • On The Farm Route Service



**FISHER & THOMPSON INCORPORATED**

DAIRY & MILKING EQUIPMENT SALES & SERVICE

MAIN OFFICE

15 Newport Rd., Leola, PA 17540 • 717-656-3307



"An American Tradition"

August 19 - August 24, 2001

Monday 6 PM to 11 PM

Tuesday-Saturday 10 AM to 11 PM

Rides Open @ 4 PM Daily,

Saturday @ Noon

Free Entertainment Nightly

SALE OF CHAMPIONS

THURS., AUG. 22 6:30 PM

1 Mile East of Center Square, Elizabethtown

Email: Etownfair@pafairs.org

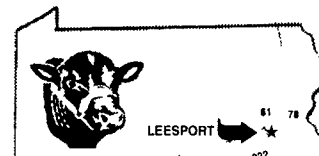
Web Site: www.pafairs.org/etownfair

**LEESPORT FARMERS MARKET**

LEESPORT, BERKS COUNTY, PA 19533 (610) 926-1307

**LIVESTOCK AUCTION**

EVERY WEDNESDAY - 1:00 P.M.



Farmers Market 9:00 AM to 8:00 PM

Flea Market 7:00 AM to ??

visit our website: www.leesportmarket.com