



**1998 Chevy Express 3500**  
12 Pass, 350 Auto., PS, PB, Dual Air,  
AM/FM/Cass.,  
New Radials, 49,000 Mi  
**\$12,900**



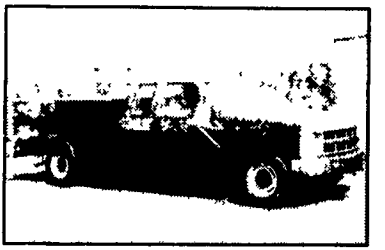
**1999 Dodge 1500**  
Short Wheel Base, 8 Pass., 3.9 V/6, Auto,  
PS, PB, Cruise, Tilt, Air, AM/FM/Cass,  
59,000 Mi.  
**\$10,500**



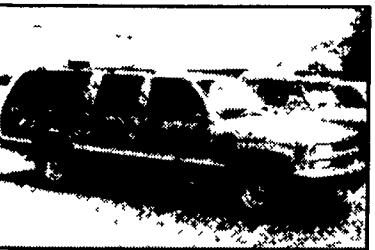
**1998 Dodge 1500**  
Short Wheel Base, 8 Pass, 3.9 V/6, Auto,  
PS, PB, PW, PDL, Cruise, Tilt, Air,  
AM/FM/Cass, 39,000 Mi  
**\$10,900**



**1998 Chevy Cheyenne 2500 HD**  
3/4 Ton, 350 Auto, PS, PB, Air with 8 Ft  
Alum Flat Bed, Fold Down Sides with  
Loading Ramp, 31,000 Mi, Ex Cond  
**\$11,500**



**1997 Chevy Cheyenne 2500**  
with 8 Ft Reading Utility Body, 350 Auto,  
PS, PB, Air, 8600 GVW, 80,000 1-Owner Mi,  
New Radials, Red  
**\$12,500**



**1995 Chevy Silverado 2500**  
2WD Suburban, 350 Auto, PS, PB, PW, PDL,  
Cruise, Tilt, Dual Air, AM/FM/Cass,  
3.73 Ratio Limited Slip Diff., Towing Package,  
48,000, 1 Owner Mi, New Radials, Exc Cond  
**\$13,500**

**A&J AUTO SALES**

798 E. Main St., Rt. 322 East, Ephrata, PA 17522  
717-733-2873

CUSTOMER SERVICE IS #1

Trailer Financing  
Available or  
CASH



**HOURS**  
Mon Tues  
Wed & Fri 8-5  
Thurs 8-8 Sat 8-2

**Truck & Trailer Parts & Accessories**  
Distributor

7760 Allentown Blvd. Harrisburg 717-671-9115  
6250 Carlisle Pike Mechanicsburg 717-795-9116  
Parts/Orders Only 800-622-7003

A.R.E. TRUCK CAP & LIDS • TRUCK ACCESSORIES

**CAR MATE**



D O W. EQUIPMENT



SKID STEER EQUIPMENT



4x8 ANGLE IRON W/MESH GATE



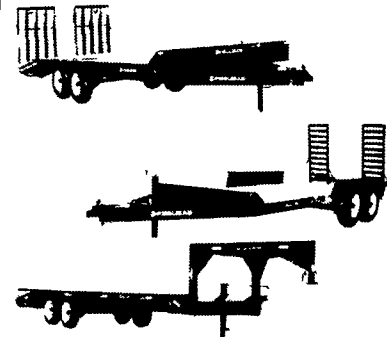
4x8 ANGLE IRON W/TILT BED

**MASTER TOW**



Model #77T  
Tilt Bed Tow Dolly  
**\$695 Special w/This Ad**

**SPECUEA Trailers**



A-SERIES EQUIPMENT-SINGLE AXLE



A-SERIES EQUIPMENT-TANDEM AXLE

DRAW-TITE HITCH & TOWING PRODUCTS AIR RIDE HITCHES • TOOL BOXES

TONNEAU COVERS • BEDLINERS • SNOWPLOWERS • POWER MIRRORS

TRAILER PARTS • SERVICE • FABRICATIONS • STATE INSPECTION

**HUNTER KEYSTONE PETERBILT**

1467 Manheim Pike • Lancaster, PA 17604

717 299-6630 • 800 243-2458

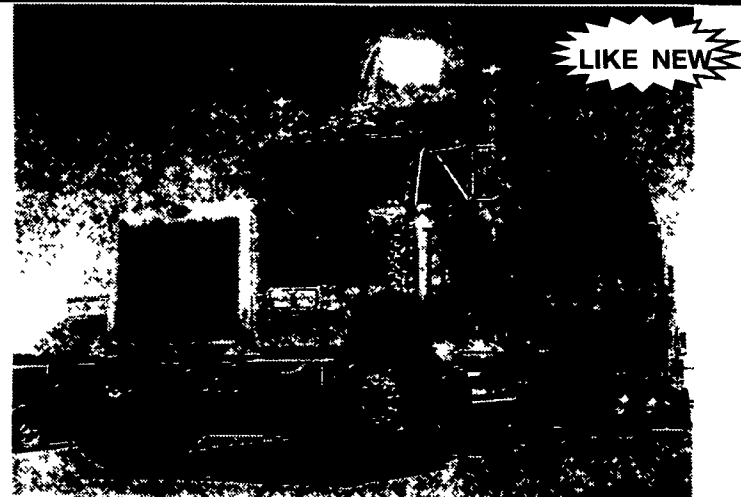


**1988 INT'L S-1954;** 215 H.P. DTA-466, Allison MT653 Automatic, 32,060 GVW, 10' Steel Dump, Snow Plow, Cinder Spreader, Auto Chains, Stock #593098

**We Buy Used Trucks !!!**  
Call Chris Vanatta  
Used Truck Manager  
**800-243-2458**



(4) 2000 KWT800 TRIAXLES; C12 AND ISM W/Jake, 8LL, Air or Walking Beam Susp, 17.5' Alum Dump Bodies, Alum Wheels, COMING IN SOON



**2002 PETE 379 TRIAXLE;** C12 475 W/Jake, 18-Spd., 18/46 Axles w/Full Locking Diffs., 46K Air Trac Susp, 17.5' Steel Bibeau Dump, Stock#541683



**2001 PETE 379-127;** Cat C15-500 w/Jake, 10 Spd, 265" WB, Classic III Int, Dual Vortex/Exhaust, Turbo Wing, Low Air Leaf, (10) Alum Wheels, Stock #547150



**1999 INTERNATIONAL 4900;** DT466E 210 HP, 7-Spd, 33,000 GVWR, 40" Sleeper, 24x102 Van Body, Stock #H651957



**1999 INTERNATIONAL 4900;** DT466E 210 H.P. 7 Spd, 32,000 GVW, Air Brakes, Air Ride, 24' Van with Lift Gate, Call for Details (N A P)



**1998 MACK RD688S DUMP;** E7-350 w/Jake, 8LL Trans, 14/44 Axles on Camelback, 16.5' Steel Body, Stock #038430



**1998 FREIGHTLINER FL70;** Cat 210HP, 6-Speed, 254" WB, Air Brakes, A/C, 33,000 GVWR, Stock #H898270



(3) **1996 INT'L 9200'S 430** Detroit w/Jake, 10-spd, 12/40 Axles, 3.73 Ratio, 207" WB, Flat Top Pro Sleeper, Air Ride, Fleet Maintained, Stock#045607



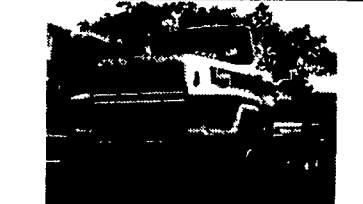
(2) **Matched 96 PETE 377's;** 3406E 475 H P w/Jake, 10-Spd, 210 WB, Low Air Leaf, Classic III Int, 48" Hi Top, Alum Whis, Stock #N413533



**1996 PETE 379-L;** 550 CAT w/Jake, 18-SPD, 3.70 Ratio, 265" WB, Pete Low Air Leaf, Amer Class Int, Stock #419062



**1995 PETE 379-L;** Cummins N14-500E w/Jake, 18-SPD, 3.23 Ratio, 260" WB, Pete Air Leaf, 63" Flat Top Sleeper, Stock #361961



**1984 FORD LTL9000 DAY CAB TRACTOR;** 400 CAT, 9-SPD, Air-Ride, 174" WB, 46 Rears, Clean, Low Mile, Day Cab!, Stock #A41801