

**LARGE PUBLIC AUCTION****FRIDAY, AUGUST 2 @ 2:30 PM****LEESPORT FARMERS MARKET****ROUTE 61 LEESPORT, PA.**

(Off of Pa. Route 61 halfway between Reading and Hamburg. Follow the signs to the Leesport Farmers Market)

**Oriental Carpets, Lots Furniture, China, Pottery, Antiques, Collectibles, Household**

**Oriental Carpets** inc: (2) 30's Sarouk Persian, Bidjar Indian, Kashmir Belgium; Rugs inc: Braided, Hooked; **Furniture**: Cherry 4 Pc BR Set; Oak inc: Marble Top Dresser, Lowboy, Black Forest Chairs & Bench, China; Mahogany inc: Slant Front Desk, Spinnet Desk, (2) DL & Drum Tables, 3 Pc BR Set; Walnut inc: (2) Sew Chests, (2) QA Buffet, Waterfall Chest & Wardrobe; Maple inc: Dinette Set, Trestle Table, Carved Chairs, Tea Cart, Dressers, Beds; Wicker/Rocker; Benches; Stools; Kitchen Cab Top; Rattan Porch Set; **Antiques/Collectibles**: Violin; Graniteware; (2) Brass Jardinieres; Bone Pie Crimper; Xmas inc: '50's Lamps; Worlds Fair Pcs; Metal Animals; LP's & 45's; Beatle Items; Child Record Player & Pic Sleeve Records; Paper Goods; Japan Bird Cage Music Box; Art inc: Oils & Chalks; Religious Items; Marionettes; Silver Plate inc: Tea Sets; Cloth goods inc: 50's Table Cloths, Material, Drapes; Prints; (2) Bull Fight Posters; Globe; Slate Board; Slaw Cutter; Vintage Clothing inc: (30+) Hats; **Glass**: (2) Kugel Orms; (11) Cut; Pickle Jar W/Screw Lid; Fenton; (50+) Depression; (35+) 40/50/60's; Hen/Nests; (15+) Milk bottles, (55) Wheaton; **China**: Gaudy Dutch Tulip Plate; (10+) Hall China; (28Pcs) Silhouette; (54 Pcs) Haviland Limoges; Porc inc: Baskets, Vase, Zeppelin, Souv; (6) Lefton; Wall Pockets; (12pr) S&P's; (25+) Animal Figs: (13) C&S's; Head Vase; **Pottery**: Sponge Bowl; Roseville Vase; (10+) Jardinieres; (10+) McCoy Pots; Brush Garden Frog; (10) Planters; Owl Cookie Jar; Crocks & Jugs; **Jewelry**: Watches; Pins; Sterling; R'stones; Costume; **Tools**: (4) Mowers; Wagon; W'barrow; Many Hand & Electric; Ladders inc: 26' Ext; **Household**: Window A/C; Stereos; Cloth Goods; Fans; Kitchen; Pots/Pans; Vac; Too much more to list!

**Doors open Friday at Noon!**

**Sellers**: Rose Gleixner, Lauredale - Lynne Vanino, Robesonia - Jean Schnabel, Fleetwood - Anna Wuchter, Emmaus

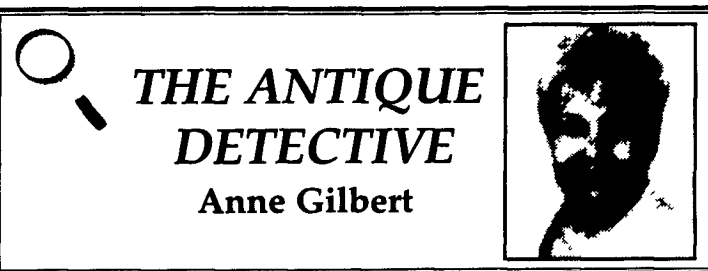
Check Web page: [www.westwall.com](http://www.westwall.com) for flier and (50+) pictures  
**Sale Order**: Box Lots, Tools & Household, 2nd Auctioneer @ 3 PM,  
 Persian Carpets @ 5:30 PM, Furniture @ 6:30 PM

**Terms & Conditions**: Cash, PA Check, Mastercard, Visa. Out of state checks must be cleared prior to auction. Oriental Carpets "cash or credit card only" paid immediately upon sale!! PA 6% sales tax charged

**Diefenderfer Auction Co.**

3523 Chestnut St. Reading, Pa. 19605

Lic#: AU-3965-L Phone: (610) 929-8215

**THE ANTIQUE DETECTIVE**

Anne Gilbert

**Candlestands And Look-Alikes**

Not every small, three-legged, tripod table is a candlestand. In fact, not every candlestand rests on a tripod. And, what about the candlestands that have more than one tier? Actually a simple check and balance system can determine the purpose of a tripod table.

Just try putting a heavy kettle, lamp or tray of food on what seems to be a candlestand.

When put off balance it will, of course, tip. It was made to hold a candle. Since balance was important early 18th century candlestands had a base that touched smoothly on the floor. The tripod base had a serious purpose. It lessened the possibility of tipping on the uneven floors of that period.

Tripod tables were made for many purposes. A sine table, for example, can be recognized by its' small protective gallery of brass or wood (railing).

A dumbwaiter table held sweets and other tidbits on two or more tiers. The tall tripod ta-

bles (36" and up), called "torch-yeres" were made to hold candles. When taller, they were made to hold plant urns.

The look of the tripod base has changed since its' origins in the 17th century. At that time the "x" base was pinned to the pedestal with a dowel. By around 1725 the legs were attached to the pedestal with wedge-shaped joints or dovetails.

The most elegant examples are considered to be Chippendale. Some of these had tilt-tops, piecrust tops or "bird-cage" styling at the top of their column. Often the central column was carved and beautifully turned. Cabriole legs ended with carved claw-and-ball feet. Tops varied from round, oval, and octagonal to square.

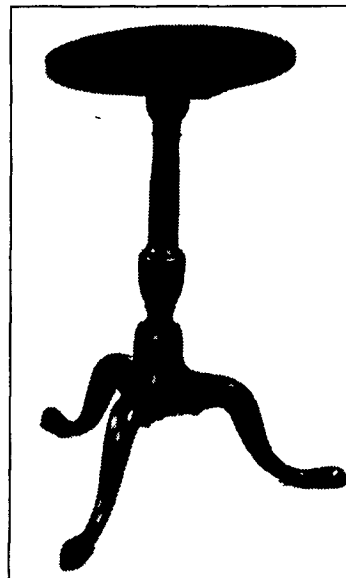
CLUES: Candlestands made during the Federal period(1788-1825) in the George Hepplewhite style, can be recognized by tripods ending in slipper, snake or spade feet. The elegant piecrust top was replaced by a lozenge-shaped top.

satinwood with shell and other motifs. Woods used depended on the locale where they were made. Mahogany, cherry, pine, and walnut among them. During this period they were also painted in black and other colors, but ivory.

The pieces made in the Sharraton (Federal) period had concave tripod legs and fluting often decorated the central column.

When tripod tables late 18th to early 19th century come to auction, prices can fluctuate de-

(Turn to Page B22)



**Federal cherry tilt-top stand, Massachusetts, c.1790-1810. Photo credit: Skinner Auctions, Boston, Mass.**

The top was often centered with an inlay of

**Public Auction**

For the Mildred (Bickel) Gettel Estate

**Friday & Sat., August 9,****6:00 P.M. & 10, 9:00 A.M.****Rehrersburg Fire Hall**

**From Reading area**: Take Route 183 North until approx. 2 miles north of Bernville. Follow New Schaefferstown Road approx. 5 miles to second stop sign. Take a right.

**From Lebanon area**: Take Route 422 East to 501 North. Follow until approx. 1 mile South of Bethel. Continue straight on Rehrersburg Road. Fire company is in the square of Rehrersburg  
**Phone number day of sale 610-780-1180.**

**Friday, August 9**: Approximately 60 Hummel Figurines, 1971-1992 Hummel Plate Collection, Assorted Costume Jewelry, Assorted Stamp Collection, Indian Arrowheads, R.P.M. Motor Oil Bank, Silver Dimes, Quarters, Half Dollars, 600+ 1943 Zinc Pennies, Susan B. Anthony Dollars, Half Dollars, 1908-1818, 1826, 1828, 1839, 1858, 1859, 1940 Gold, 1857 \$1.00, 1910 Quarter Eagle, 1913 Half Eagle, 5 American Eagle 1 oz Silver Button Coins, US Mint and Proof Sets, Plus Rolls of Pennies, Nickels, Quarters, Halves, and many other miscellaneous coins.

**Saturday, August 10**: 1999 Lincoln Continental, 4-door, loaded with only 37,000 miles (Sold Subject to Owner's Confirmation).

**Antiques**: 1940's Embroidered Quilt with 48 Blocks with Name and State Flower on Each Block (Excellent Condition), 1940s Glamour Girl Pin-up Calendar, Assorted Cranberry Goblets and other dishes, Old Edition of the Story of Berks County, Copper and Brass Kettles, German Beer Steins, 2 Austrian Crystal Chandeliers, German Coo Coo Clock, Corning and Kitchenware, Assorted Cook Books, Table and Floor Lamps, Assorted Pictures and Prints, Golf Clubs, Nice Selection of Mitchner Bottles, Assorted Oneida Silver Pieces, and much more.

**Furniture**: Dry Sink, China Cupboard, (Corner Cupboard, Hutch, Grandfather's Clock made by Ira Leshner), 3 Piece Green Metal Table and Chairs, Living Room Suite, Wooden Rocker, Couch, Chair Rocker, Rocker Recliners, Wing Back Chair, White Wrought Iron Set (Newer), Chest of Drawers, Cedar Wardrobe, Butler's Coffee Table, New 3 Piece Wall Unit Book Case, Green Wicker Table, Chair, Rocker, Love Seat and Couch, Electric Organ, Piano made by Decker & Sons, Assorted Rugs, and more.

**Note**: Lots of very nice merchandise will be sold both days.

**Auctioneers**:  
 Richard A. Kramer  
 AU-003135-L  
 Rick Kramer  
 AA-002278-L  
 (717) 933-8219



**Terms**:  
 Cash or  
 PA check

Sale ordered by  
 Janice Conner and  
 Suzanne Homan,  
 Executrixes

Refreshments provided by Rehrersburg Fire Company

**PUBLIC AUCTION**  
**ANTIQUES, 200+ LONGABERGER BASKETS**  
**COLLECTIBLES, FURNITURE**  
**CONCESSION TRAILERS, BOX TRAILER**  
**MON. AUG 5, 2002, 3:00 P.M.**

Located at Shaffner Auction Gallery, 977 West Main Street, (Route #230) Mount Joy, PA 3 Miles from either Rheems or Manheim/Mount Joy exits of Route #283 midway between Lancaster & Harrisburg PA  
 Reverse painted boudoir lamp, Watt bowl, Lg Moseman peanut butter can, 3 pcs. Green agate, composition doll w/military uniform, magic lantern w/glass slides, firkin, beaded purse, flu covers, tramp art frame, pr brown sponge bowls, GAR grave marker, Union 5 gal. churn, dazey butter churn, Acorn 6 gal crock, Red Wing 3 gal. crock, other crocks & jugs, unusual brass ship lamp, old fire extinguishers, pie board, Winchester food chopper, pr fancy decorated milk glass table lamps, Dietz lantern, mortar & pestle, tin-ware, cast iron items, Lindberg books, Betty the Beautiful Bride doll w/box, gray agate coffee pot, Bedrock #606 plane, ironstone tea set, depression glass, carnival footed dish, glass Dixie cup dispenser, cranberry sugar shaker, Limoges chocolate pot, other glass, china, & pottery, Beleek, unusual pottery vase w/3 bird heads, set of jadeite, photo album, pictures & frames, Mt Joy food choppers, Hubley cap pistol, Wedgewood table lamp, wooden "Putnam" dye cabinet, Marx batt operated monorail with box, MORE!!  
**210+ LONGABERGER BASKETS (Starting at 5 P.M.)**: Nice selection of Collector's Club baskets including 1996 Miniature Market signed by Grandma Bonnie Longaberger, 1996-2000 miniatures, 1989 banker's waste, 1991 Corn, 1988 Gathering, 1994 Umbrella, 1999 Picnic, 1999 Century Celebration, 1989 Inaugural, 1989 quilting, 1988 sm. Picnic hostess, 1989 Mother's Day, 1991 Rose, 1996-2000 Bee baskets, Booking, Father's Day, Easter, Pumpkin, Autumn, All American, Christmas, Horizon of Hope, Fellowship, Tour, Sweetheart, 1995 sm berry w/4 family signatures, 1997 20th Century w/2 family signatures, pottery, cookie molds, ornaments  
**GREAT VARIETY OF LONGABERGER'S FURNITURE (7 P.M.)**: 5 pc depression BR set, music cabinet, 6 plank chairs, 2 oak tables w/drawer, oak high chest, primitive washstand, press back rocker, oak floor showcase, sewing stand, Mahogany chest of drawers, victrola, Beverley floor radio, fancy brass floor lamp, school desk, 6 Ft blacksmith bellows, MORE!!

**6:00 PM- FOOD TRAILERS, EQUIPMENT & SUPPLIES, BOX TRAILER, VAN, GENERATOR**: 16' Concession Trailer-SS Refrig., Sinks, Range, Fryer, Pressurized Water, Fan & Much More; 12' Concession Trailer, Exhaust Fan, Stove, 36" Griddle, Deep Fryer and more; Gas/Charcoal 2 Pig Size Pit Trailer, 1998 Hallmark 12' Enclosed Utility Trailer with Torax Axle, 7' Interior Height in Great Condition; 1985 Chevy Window Van, 1 Ton, High Mileage But Runs Good, Electric Brakes, Class III Hitch; 7000 KW Generator with 13 HP Honda Motor, Pull & Electric Start with 137 Hours & Wheel Kit; (2) 18' X 20' Canopies; other food/party equip & supplies. Preview NOON, 10% Buyers Premium, Visa/MC

Can we work for you? At our location or yours? Receiving hours at the Gallery are Wed 2 PM - 7 PM & Sat 9 AM- Noon or call for a free confidential appointment to discuss how to get the most for your collection. NOW SCHEDULING LARGE TRACTOR PAPER & TOY AUCTION. CALL TO CONSIGN.

Shaffner Auction Co.  
 Mark Diefenderfer AU-2897-L  
 717-492-0004  
 Marty Fleck 717-413-6238

"We treat your property as if it were our own"

[www.shaffnerauction.com](http://www.shaffnerauction.com)

**PUBLIC AUCTION**  
**OF HOUSEHOLD GOODS,**  
**OLD QUILTS, WOOD WORK-**  
**ING TOOLS & CARRIAGES**  
**SAT., AUG. 10, 2002 9 A.M.**

Located at 868 S. Custer Ave., New Holland, Lanc. Co., PA. Turn off Rt 23 in New Holland on S. Custer Ave., 2 1/2 miles to sale.

**ATTN: FURNITURE SOLD FIRST**

6 Pressed back plank bottom chairs; odd chairs; oak pottie chair; trunks; camel back trunk; wooden bench; old wooden 8 drawer food dryer; old tobacco sizing boxes, Harman Coal Stove Mark II  
**SOME GLASSWARE**: Cooking utensils; old tins; Agateware; old German keys; advertising items; old marbles - shooters & earthen, craft items; wood craft patterns; two miniature 1 horse milk wagons; wooden peck measure, crocks; jugs; 12 gal. crock; 6 qt. milk kettle, canning jars, pea & egg scales; egg baskets, baskets, 2 sets of brass sailboat bookends, ladles & forks; gas lights; lantern; earthen chick waters; wood chicken crates; old magazines early 1900's, Farm Journal, Almanacs, Iron Man, National Geographic.

**TWO OLD CENTER BLOCK QUILTS**, Good Condition; Lots of wool rug material; Hoffmans farm seed bag

**SHOP EQUIPMENT**: Craftsman 32" wood lathe; Montgomery Ward 20" band saw; table mount drill press, Craftsman shaper; 6" planer; 6"x48" belt sander/9" disc; 8" table saw; 10" table saw; 6" joiner, 10" radial arm saw; Oliver 18" #192 band saw; Rockwell Mod 15 floor drill press; All equip. w/air motors; 6 Senco staplers; air drills; routers; sanders; air sabre saw; clamps - pipe, C, spring & bar; bolt cutters; wood working tools, nuts; bolts; nails, L&I J. White 2 1/2" wood chisel; Spoke shaver; planers; Stanley #71 hand planer; Adz, Champion stove; 50 drawer oak organizer; fan w/air motor; engines; misc items.

**HAND & GARDEN TOOLS**: Kemp 7 Hp shredder; 10 A walking plow; 2 section J.D 24 disc.; Spring harrow; garden sprayer on wheels; shovel harrow; Buck saw; 2 man saw, old Clover seed sower; bee supplies, honey extractor; New Idea 1 hole corn sheller; hog trough.

**GUNS**: JC Higgins Model 5832 shotgun, 22 Winchester Model 69A w/scope.

**2 CARRIAGES** and many other items too numerous to mention.

Terms by:

**GIDEON B. BEILER ESTATE**

AUCTS.  
 Robert E., Jeffrey R. & Michael L. Martin  
 656-7770 AU00580L Randall L. Ranck  
 Lunch Available No Out-of-State Checks