

# Wolf's Collection Showcases Farm, Rural Memorabilia

(Continued from Page B19) to boycott I-H. In a settlement, the Long's builder signed an agreement to refrain from building any tractor for 30 years.

While all of then-known Long tractors, plus all parts to build more, were shipped off for salvage scrap, a small number already out in use and were never retrieved. At one time Wolf had found and restored four of these "escaped" rarities, but has since sold two of them.

Along with series of both John Deere and Ford models of antiquity is a hybrid known as a Ford-Deere tractor.

"It was a wartime tractor," says Wolf of the machine devised using a Ford motor to power a John Deere chassis. The small Indiana company, which engineered the components marriage only ever made 24 of these machines.

Tractors were available through the major mass marketers of mid-century, with both Sears and Roebuck and Montgomery Ward firms each offering their own line of tractors. Wolf's collection includes models from both of these backbone Americana merchandisers, from small "truck patch" types to the heavier, higher-horsepower versions designed for the flat fields of the Midwest.

"The Sear's Graham Bradley was delivered in a covered van and unloaded, all those rusty pieces all over the field," says LaVaughne, noting her husband's restoration abilities.

"All you could recognize were the seat and steering wheel."

Big, round hay balers have become staple items on most of today's modern farms and Wolf's lineup includes one of the very early designs. Along with their inventive work on the self-propelled combine, Allis-Chalmers engineers also developed the Roto Baler in 1947. While round bales, of smaller size than commonplace today, were popular in Canada decades ago, they never caught on as widely in the U.S. until the more modern and familiar larger-bale models were developed.

Tillage also came in for some creativity, as evidenced by one of Wolf's early plows outfitted with a leveling attachment designed in Texas. The rig was probably not as effective on steep hills or sharp turns.

"That was before no-till. If you went in fourth gear, it made the field surface nice and smooth for planting," explains Wolf.

Hopping onto a somewhat triangular-shaped platform, built on wheels low to the ground, Wolf quizzes visitors as to the purpose of the piece of equipment.

When all guesses are wrong, he explains that the two-person, Canadian-made "Scientific" corn-cutter wagon was for cutting silage corn, and points out the sharp knives along the bottom edge on either side, which he has covered up for safety. When he was nine, Wolf rode the device with his brother

out in the fields before school, gathering armfuls of corn as the knives sliced off the stalks at ground level, then dropping them along the way in bunches to be picked up later for silage chopping.

Although with the equipment collection, Wolf has accumulated a lineup of classic automobiles and trucks. Each vehicle in the collection is representative of a model and make that played a particular role in his life, like a 1933 green Chevy coupe like his first car, and his first pickup, a 1937 Chevrolet. Another prize is Wolf's restored 1942 black Plymouth in which he courted LaVaughne. For their 50th wedding anniversary three years ago, the couple celebrated with a road trip geographically similar to that traveled during their honeymoon.

As has become customary, Wolf hosted several hundred visitors to the three-day annual display. The event, culminating with a rally of some 60 Model-A Ford owners who gathered on Monday of Memorial Day weekend to admire each other's restored vehicles, enjoy the lineup of Wolf's collection and, of course, swap lots of stories.

Wolf is already looking ahead to the 2003 Memorial Day weekend open house, with plans to showcase his two latest acquisitions. The addition of a Sheppard-diesel, manufactured in the nearby Hanover area, and a Minneapolis-Moline boosted his collection to 46 tractors, representing 19 companies.

## Lancaster Farming Antiques Center

### COMPLETE AUCTIONEERING SERVICE PUBLIC AUCTION

Wednesday, July 31, 2002 @ 3:00 p.m.

Selling Antiques & Collectibles from the Jones Farm, RR 1, Box 414, Millmont, PA DIRECTIONS: From Lewisburg travel west of Rt 45 into the town of Hartleton. At the end of Hartleton bear left toward the town of Laurelton. Continue through Laurelton towards Weikart approx 3.5 miles to auction on right. Signs posted

#### ANTIQUES & COLLECTIBLES

5 Piece Walnut Bedroom Suite with Rose Colored Marble Top & Carvings, Marble Top Parlor Stand, Round Oak Pedestal Table, 50's 4 Piece Bedroom Suite w/Twin Beds, Ornate Desk Chair, Flat & Round Top Trunks, Library Table, Dropleaf Table, 3 Small Plank School Chairs for Montandon by Milton Bradley, 2 Cedar Chests, Plank Rocker, 6 Wooden Ice Cream Style Chairs, Sewing Stand, Oak Sewing Chair, Treadle & Elec Sewing Machines, Wooden File Cabinets, Coo-Coo Clock with 2 Weights, Misc Plank Chairs, Child's Slant Front Desk, Elec Guitar & Amp by Teisco Del Rey MD 200, Mirrors, German Alarm Clock w/Dancing Girl, Colonial Mantle Cane Chairs, Asst of Lamps, Open Blade Fan, Misc Crocks & Jugs, Anchor Wrenger, Brass Ship Lamps, Aunt Lydias Button & Carpet Thread Box, Tin Tops by Ohio Art, Tin Chick Pushing Cart by Chem, Tin Horns, Rubber Tractor & Truck, Grain Cradle; Halloween Costumes, Seasonal Decorations, Grey Hound Wagon; Bronze Dog Bookends, Autolite Mjners Light, Garden Gate, Crab Trap & Buoy, 2 Multi Patch Quilts & Others, Wooden Work Bench, Milk Glass, Mahogany Buffet, 5 Braided Rugs, 9x12 Wool Rug, Bookcase w/Glass Doors, Seth Thomas Shelf Clock, Beam Scales, Sad Irons, Milk Can, Cast Registers, Brass & Copper Fire Extinguishers, Wooden Wheels, Cast Grate w/Tulips, Old Slop Jar, Blankets, Ladies Hankies, Afghans, Comfort, Bedding & Towels, Quilt Top, Linens & Fancy Work and Table Cloth, Mexican & Indian Rugs & Other Items, Cookie Jar, Boy Scout Uniform, Ladies Hats, 2 Old Tuxs, Army Dinner Bell, Leather Mexican Purse, Crocheted Purse w/Bead Decoration, Fancy Girl Framed Postcard, Folding Seamstress Table, Straw Cutter by Garth, Mill Hall, Gig, Some Indian Points, Records to include Rudolph, 1993-94 Masonic Medals, Marshall & Franklin, Old Painted Soda Bottles, 2 Coors Vases, Roseville Pieces, 917-1", 257-4", 919-7", Old Repo Map Prints of the World, Wood Work Bench, Match Tin, Framed Prints by Riess & Art Work by Christy, Remington, C.M. Wetzel, & Others, Studebaker President Hub Caps, Waffle Iron, Griddles, Canning Jars, Barn Door Hinges, Cot, Bottle Capper, Child's Sled, Mendeville & King Co Box, Tin Chalk Box, Cheese Boxes, Firing Mugs.

#### BOOKS

Centennial History of Bucknell, Works of Josephus Leather Bound; History of Free Masonry, Encyclopedia of Masonry, Life of T. Edison, Audubon Books, Rise & Fall of the 3rd Reich, History of King Phillip, 1857, Foxfire Book, Trout by Bergman, Black Bass by Knight, Trout Flies, Rising Trout by Fox, The Trout & The Stream by Brooks, Steam Side Guide by Flick, Practical Fly Tying by Chas. Wetzel, Fur/Trout by Everett, Treasury of Angling, Bucknell & WAC Yearbooks & Others, Newsweek from start to finish of war, Abe Lincoln by Sandburg, The Prairie Years & War Years, Life of Teddy Roosevelt, Popular Mechanic from 60's, Hot Rods from 60's, PA Dutch by Robacker, Americans on the Frontier by Miller, Sat Evening Posts from 40's, Life Magazines from 40's, Woman's Day, Anyone Can Fly by Bergman, Early Encyclopedias, The Story of American Hunting & Fire Arms, The Rough Grouse 1947, The Great West, Game News, Wartime Newspapers, Lots of Children's Books, & Many More.

#### HOUSEHOLD ITEMS

Sectional Sofa, Tea Wagon, Sentry Safe 2x2x2, Metal File Cabinet, Flatware, Silver Plate, Large Water Pitcher, English Dinnerware Service for 12, American Fostoria Vase; 12 Volt Frig for Car, Canes, Money Roller, Elec Smoker, Dorm Refrigerator, RV Drop-Leaf Table, Night Table, Fan, Lots of Pots & Pans, Punch Cups, Lots of Misc Tools & Shop Items, Croquet Set, Yard Games, Reel Lawn Mower, Lawn Furniture, Ping Pong Table, Step Ladder, 275 Gal Fuel Tank w/Pump, Misc Lumber; Wooden Ladder, Drying Rack, Conibear Trap

KENNETH E. HASSINGER  
RR 02, Box 985  
McClure, PA 17841  
(570) 658-3536  
AU-001532-L



NEIL A. COURTNEY  
R.D. #1 Box 239  
Richfield, PA 17086  
(570) 539-8791  
AU-002651-L

# Martin's Annual SUMMER AUCTION of Carriages, Sleighs & Antiques

Friday, August 9 & Saturday, August 10, 2002  
Lebanon Fairgrounds, Lebanon, PA

OVER 300 Coaches, Carriages, Sleighs and Wagons will be sold in two days at this large specialized event of coaching, driving & riding appointments, equine related items for everyday use and the collectors, antiques and other collectors items. Plan now to join us at Lebanon Area Fairgrounds.

#### TENTATIVE AUCTION SCHEDULE

THURSDAY, 12:00 Noon To 7:00 PM - PREVIEW

FRIDAY 9:00 AM - Approx 100+ CATALOGUED carriages & Sleighs

NOTE: Be here early!! This session will be finished by 12:00 Noon or 12:30 PM

APPROX. 12:00 NOON - OR IMMEDIATELY FOLLOWING THE CATALOGUED CARRIAGES - ALL NON-CATALOGUED & CATALOGUED APPOINTMENTS - FRAMED PICTURES & PRINTS, EQUINE RELATED BOOKS & PERIODICALS AND OTHER GOOD APPOINTMENTS.

Just received - A small consignment of Royal Doulton china ware antique (5) very nice riding crops and a few other early riding and hunting appointments

PLEASE NOTE: We are expecting a nice consignment of non-catalogued carriage and coaching appointments for Friday afternoon's session

#### SATURDAY FIELD SESSIONS

9:00 AM - Expect 200 carriages, sleighs, farm wagons, running gears in all conditions for ponies, miniature horses, horses & draft horse sizes

9:00 AM - Rows of non horse related items including primitive tools, advertising memorabilia, collectibles, cast iron toys and many other items of interest to the avid collector

9:30 AM - Tent session of driving, coaching, riding appointments, new & used tack, livery harness parts, horse & pony blankets, miniature wagons, framed pictures & prints, assorted bits, and many other horse related items

10:30 AM - Saddle & Western Memorabilia Tent - English, western, military & other saddles, new & used Bits, spurs & other western items

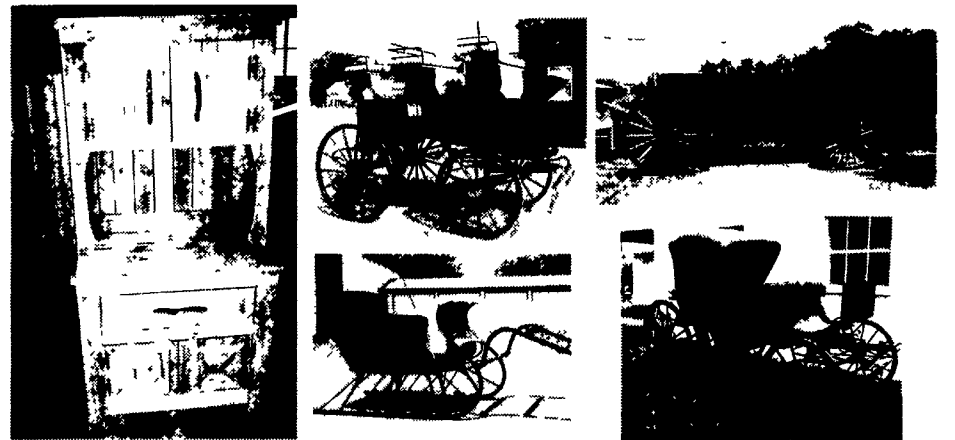
11:30 AM - Enclosed horse & carriage trailers, flat-bed carriage & utility trailers, trucks

12:00 NOON - Rows of horse related items, carriage & wagon parts, horse drawn farm machinery, wagon wheels, poles & shafts, blacksmith tools & many other items

1:00 PM - Harness tent - Pony, cob, horse, draft horse sizes including single, pair, 4-in-hand and others, show, work & pleasure harness

PLEASE NOTE: FIELD ITEMS ACCEPTED UNTIL THE START OF THE AUCTION ON SATURDAY MORNING. (NO PRIOR DEADLINE.) NO JUNK, TIRES OR APPLIANCES! THANK YOU.

Coaches, carriages, sleighs & wagons - Ladies wicker basket phaeton, Bronson wagon, Oakland with top & foldaway groom's seat, Stanhope gig, single seat sleigh, all made by Brewster & Co. Several roof seat breaks. Omnibus in original condition, 3/4 size break, restored doctor's buggy, restored Coupe Brougham, Geo IV Phaeton panel boot Victoria. Vis-a-vis in original condition, Coupe Brougham, polo gig, sev Village carts, restored Essex Trap, pleasure driving Suiresys, doctor's buggys, runabouts, 2-wheel carts including gigs, new & used Meadowbrook type, high Wheel Sulkys, Breaking carts, village back-to-back carts & others. New carriages include Wagonettes (sev sizes), Pony hitch wagon, several Vis-a-vis, roof seat break, miniature horse carts & others. Used Marathon and competition vehicles, commercial & farm wagons, 2- & 4-wheel Houghton show carts, Pony Governess cart by Ferd French, & many others. These vehicles are in all conditions and price ranges. Something for all driving, coaching, and equine enthusiasts



Catalogues available, including photos and descriptions of all vehicles and listings of catalogued items on Friday (books, fine appointments, etc.) U.S. \$20.00 (pick-up) or \$23.00 mailed Priority Mail, Overseas & Canada (US Funds Only), \$25.00 each, air mail. All Catalogues Being Held For Pick-Up At The Auction Site Must Be Claimed By 10:00 AM on Friday, August 9th. Thank you

#### RECEIVING TIMES - WEEK OF AUCTION

Tuesday, August 6 - 12:30 to 6:00 PM

The Field Office Will Open At 12:30 PM

Notice: Field gate will not open before 12:30 PM Tuesday

Wednesday, August 7 - 9:00 AM to 6:00 PM

Thursday, August 8 - 9:00 AM to 6:00 PM

Friday, August 9 & Saturday, August 10 - 8:00 am until start of auction (Field sessions only)

#### TERMS & CONDITIONS:

Cash, Travelers Checks, Certified Check, Money Orders, U.S. Funds Only. Personal or business checks accepted only with a Current Bank Letter of Guaranteed Payment, made payable to Martin Auctioneers, Inc. This currently dated letter must be presented at time of registering for a buyer's number. Sorry, No Credit Cards!!

#### BUYERS PREMIUM:

• 6% On All Items Selling For \$1,000 & Over (Per Item).

• 10% On All Items Selling Under \$1,000 (Per Item).

Buyers: All merchandise must be paid by end of sale day and removed from the fairgrounds by Noon on Sunday, August 11, 2002. Shipping and storage is available. Please contact our office prior to the week of auction to make tentative arrangements. Call (717) 354-6671

Selling Saturday, August 10, 2002  
At approximately 11:30am

To benefit  
**UNITED STATES DRIVING FOR THE DISABLED**

Completely Portable Stabling for Six Horses, Easy to Assemble and Haul

Heavy Duty and Good Condition Tie Stalls Measure 6'x10'

• Sets up as a Free-Standing Four-Horse Stable and

• Free-Standing Two-Horse Stable, Selling Separately

Both come w/roof



Paul Z. Martin Jr.,  
President, Auctioneer  
Roger Spencer, Auctioneer  
Patrick Morgan, Auctioneer

## Martin Auctioneers, Inc.

12 North Railroad Avenue \* P.O. Box 99 \* New Holland, PA 17557

Phone: (717) 354-6671 \* Fax: (717) 354-8248

PA-AY-00144L \* CA-879 PA-AU0001863L \* NC Lic. #4626

Auction Site Phone: 717-228-2828 Week of Sale Only!



For more information regarding this auction or an auction of your own contact Paul Z. Martin, Jr. or Shirley Morgan at (717) 354-6671 Absolutely No Private Sales On Auction Grounds!