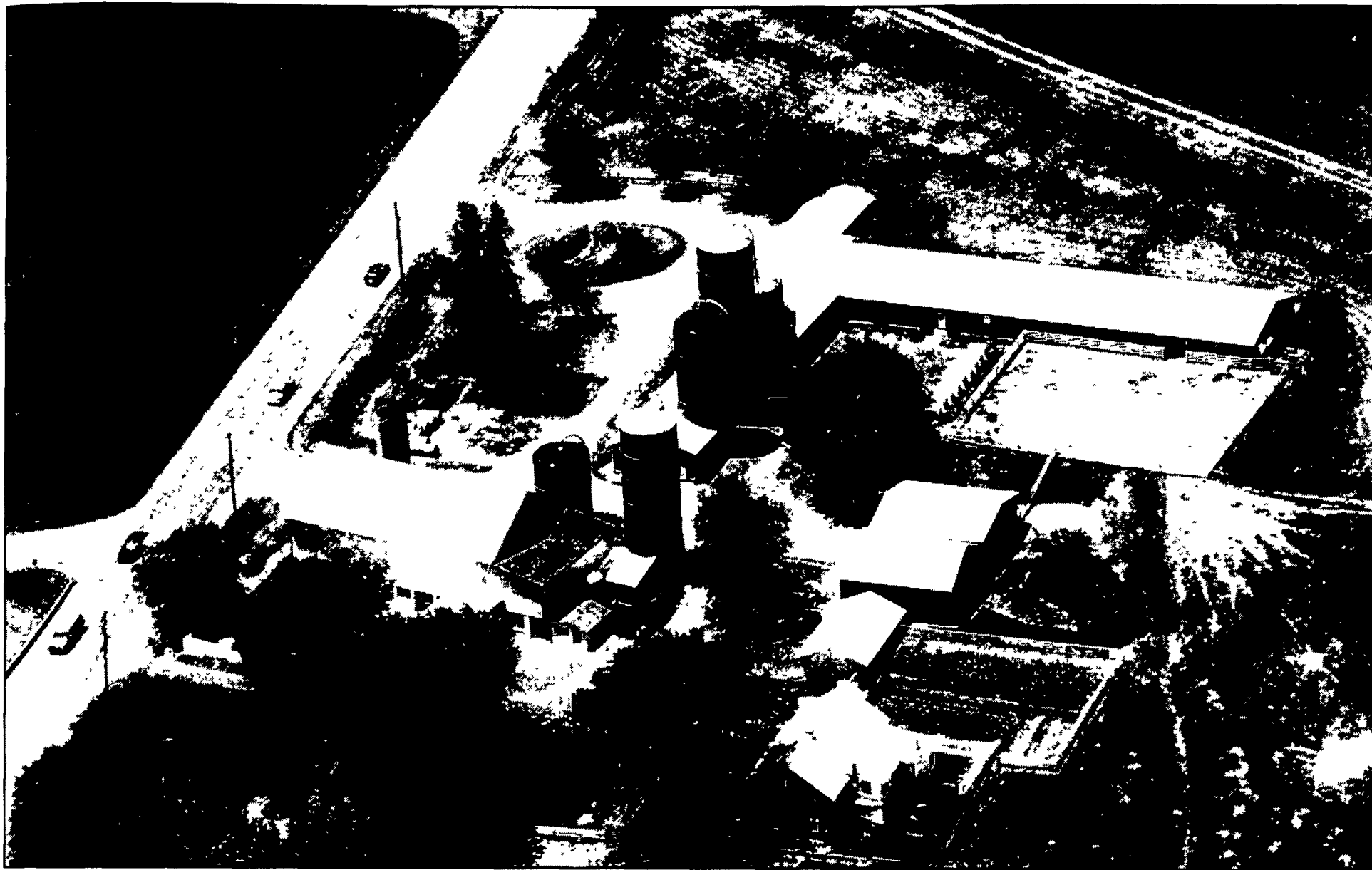


Zimhaven Farm

East Earl, Lancaster County



Dale Zimmerman grew up here and purchased the cows from his parents D. Martin and Leila Zimmerman in the early 1990s. The farm has been in the family for many generations and was previously named a Dairy of Distinction under the ownership of Dale's

parents.

Dale and his wife Barb milk 80 Holsteins and grow corn, alfalfa, and rye for feed. They have two children: Jordan, 4, and Jeremy, 1.



POWDER COATED STEEL DAIRY BARN EQUIPMENT

LOOP STALLS

All Loop Stalls Are Coated With Baked-On Top Grade Polyester TGIC Powder Coating After Fabrication

- Super Tough Finish • Chip Resistant
- Protection From Rust & Corrosion • Superior Electrical Insulation
- Resists Acid & Chemicals • Smoother Finish Stays Cleaner

LOOP STALLS WIDE FRONT FEATURING

- The most versatile of all loop stall designs
- Greater cow comfort when entering and exiting stalls
- Sufficient lunge space for head and neck between top and bottom of loop



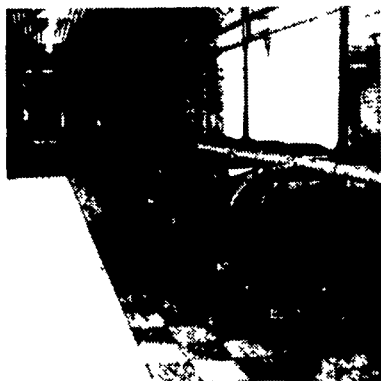
SUSPENDED COMFORT STALLS

Finished With Baked on Top Grade Polyester TGIC Powder Coating, After Fabrication

- Increased comfort for cows
- Easy cleaning
- Easy access for bedding & milking
- Adjustable tie rail
- Fewer trampled teat problems
- Durable powder coating resists manure acids & chemicals
- Powder coating helps insulate against stray voltage problems

Fabricated for Durability & Dependability

- All welded construction for many years of trouble free service.
- Stalls are constructed with 1.9 O.D. (.133) wall, high strength tube and 2" square post with 1/4" wall.



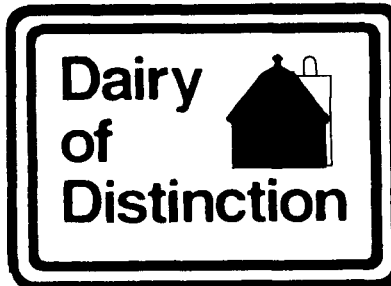
GATES & FENCING

Finished with Top Grade TGIC polyester Coating

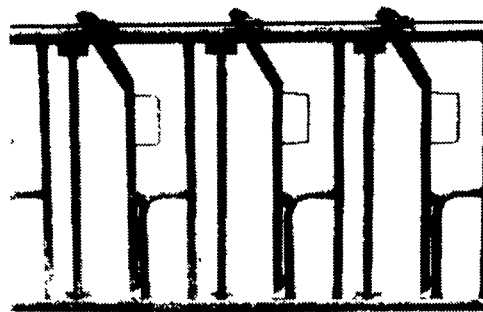
All Gates & Fencing Made Of 1.9" Outside Diameter High Yield Steel Tubing With 13 Ga. Wall



Congratulates
The 2002
Award Winner



HEADLOCKS EXTRA HEAVY CONSTRUCTION



Three Sizes Available To Meet All Your Cattle Handling Needs

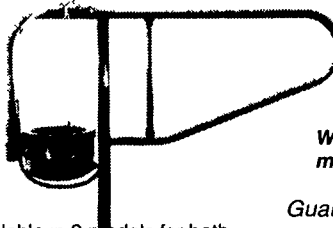
New Zimmerman Water Bowls

IMPROVE YOUR AVERAGE

Increase Milk Production... Naturally!

Supplying fresh water continuously, with larger bowls & instant recovery, you get more milk... at no extra cost... naturally!

- 3 gallon capacity
- PVC construction
- Exceptional durability
- Minimize water waste



WB95P, mounted on stanchion

Guaranteed Unbreakable



WB95G, with optional splash guard

Available in 2 models for both pressurized and gravity systems, they can be built into new, or added to existing, tie stall housing
Improve your average! Call today for more information



Hours Mon. Thru Fri. 7 to 5
717-738-7365

295 Woodcorner Rd., Lititz, PA 17543-9165
1 Mile West of Ephrata