

Farm Show Complex Construction Accelerates

ANDY ANDREWS
Editor

HARRISBURG (Dauphin Co.) — Progress on the multimillion dollar construction under way at the new Farm Show Complex is speeding up for a January 2003 delivery.

Enthusiasm and anticipation is running high for the new construction.

On Monday this week, construction crews were ready to place nine 14-ton heating, ventilation, and air conditioning (HVAC) units on top of the roof of the trade show exhibit building. The roof was installed a few weeks ago.

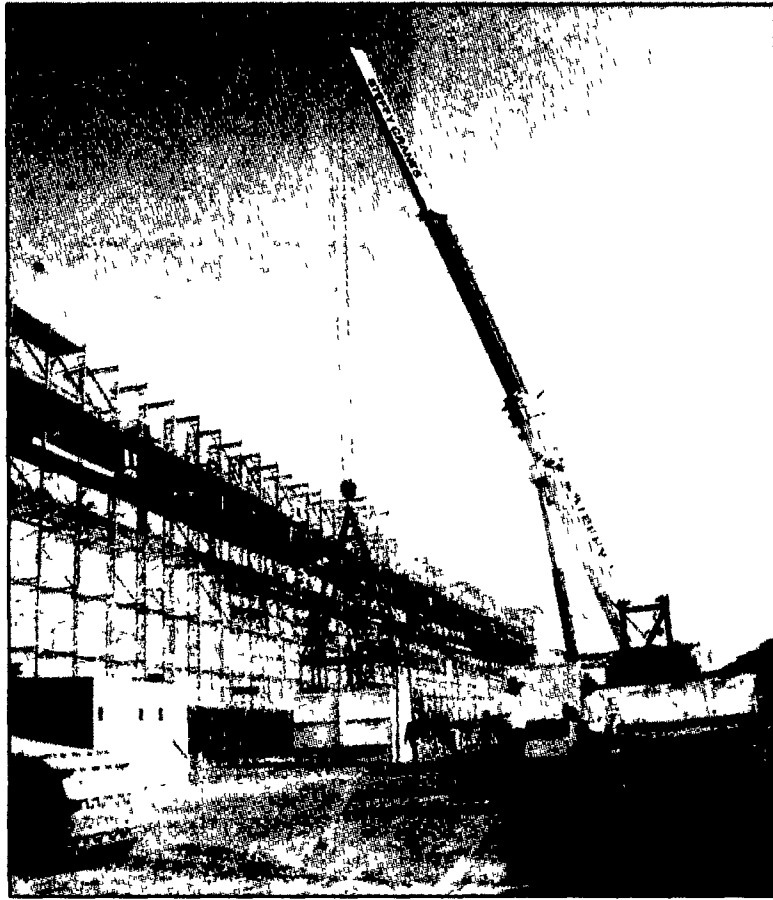
It will take about five days to completely lift all nine units to the top, according to Ray Feidt of Steffy's.

AmQuip Construction uses the Demag CC1800 330-ton crane. The entire operation requires a crew of about 12 workers to fully install the HVAC units.

Steffy Construction, Ephrata, has a 175-ton crane also ready to assist in loading up smaller sections, at about 4.5 tons apiece, that join to the HVAC units.

Mark Defelice, Thorndale, who has worked for AmQuip for more than 25 years, noted the work involved in training to use the 330-ton crane, which can reach a total of 300 feet, including the "luffing jib" or the crane's extended arm.

According to Defelice, training for the big cranes comes from the manufacturer. Operators are re-



Ray Feidt, Steffy Construction, Ephrata, along with Mark Defelice and Rick Good, AmQuip, Bensalem, await the go-ahead Monday morning to lift one of nine 14-ton heating, ventilation, and air conditioning units to the roof of the trade show exhibit hall of the new Farm Show Complex in Harrisburg. Photo by Andy Andrews, editor

quired to have a certified crane operator license from the National Commission for Certification of Crane Operators.

More information about con-

struction, along with photos, is scheduled for a special Farm Show construction update edition in next week's *Lancaster Farming*.

Northeast District Jersey Show Aug. 16

TROY (Bradford Co.) — The Northeast District Jersey Show is set for Friday, Aug. 16, at the Troy Fairgrounds.

The show will be judged by Alan Chittenden of Schodack Landing, N.Y., and will begin at 9:30 a.m. with the junior calf class.

All typical calf and cow classes as well as a class for senior yearlings in milk will be staged including a production class for animals who have produced 100,000 pounds of milk or 4,000 pounds of fat. A premier exhibitor and premier breeder for the show will also be named.

Once again, the Noble family will present a premier performance award in memory of Tommy G. Noble. The award will be given at the end of the show and will be based 50 percent on milk production and 50 percent on class placing.

To be eligible for the premier performance award, please submit the animal's most recent 305-day lactation summary with the entries.

A first-year Jersey showmanship contest will be held as well. Youth ages 12 and under who are exhibiting a Jersey project animal for the first time are eligible to enter the contest to compete for a showbox in memory of Tommy G. Noble.

Fees of \$5 per youth entry and \$7 per adult entry should accompany all submissions. Please include the animal's name, registration number, birth date, sire, dam, owner's name and breeder's name on a piece of plain paper and send it to Paul Moyer, RR 1

Box 88A, Roaring Branch, PA 17765.

The entry deadline is Aug. 10. Entries postmarked after that date will be subject to a \$15 per head late fee.

Animals may enter the fairgrounds Thursday, Aug. 15. On that evening, a pizza party for exhibitors will be conducted with a brief meeting to follow.

To be admitted to the show, animals must be free from signs of clinical illness or contagious or infectious diseases and must be presented with an official health certificate upon entering the fairgrounds.

Vaccinations required include IBR, PI3, and BVD. Animals that have not been vaccinated against BVD during the previous 12 months must receive one dose of modified live virus vaccine given at least 15 days and not more than 180 days before the show or two doses of killed vaccine two to four weeks apart with the last dose given at least 15 days and not more than 180 days before the show. Animals that have been vaccinated for BVD within the past 12 months must receive a single injection of modified live virus or killed vaccine not less than 15 days prior to the show.

Vaccination against rabies is highly recommended.

"Through the years, the quality of the Jersey show has been steadily increasing," said Chaitman Paul Moyer, "Let's make this year's show the best ever!"

Questions about the show can be directed to Paul Moyer at (570) 324-2482.

YOU WANT FRIES WITH THAT? YOU DON'T NEED A SHOP TO NEED A SHOP-VAC!

BRAND



Pick up messes that would kill an ordinary vac! Wet or Dry!

- ▲ Home Improvement
- ▲ Vehicles
- ▲ Yard Work
- ▲ Leaks & Spills
- ▲ Tough Household Cleaning

See the complete line of the world's best-selling wet/dry vacs, filters and accessories.

\$74 12 Gallon
5.0 Peak HP
Wet/Dry Vac
#159648

Available Only At Lowes

shop·vac[®]
THE ORIGINAL WET DRY VAC



Improving Home Improvement[™]

www.lowes.com

LOWE'S[®] is a registered trademark of LF Corporation
©2001 Lowe's[®] Home Centers, Inc
For the Lowe's nearest you call 1-800-44-LOWES
Prices may vary if there are market variations

5010

www.shopvac.com

Shop-Vac[®] is a registered trademark of Shop-Vac Corporation