

Exhibits from 20 milk bottle collectors among the total 59 exhibitors from 11 states added beauty to the overall 2001 show.

### All-Dairy Antiques Show To Feature Jersey Breed Items

HARRISBURG (Dauphin Co.) — The breed of the world's most famous dairy cow — Elsie, the Borden Cow — will be featured at the fifth annual All-Dairy Antiques and Collectibles Show Sept. 21-25, Harrisburg.

Elsie was a fictional character created in the 1930s for print advertising and radio commercials. She literally came alive at the 1939 New York World's Fair and has become a living legend for more than 60 years.

Husband Elmer joined her in 1940 and during World War II he became "spokesbull" for Borden's Chemical Division for the famous product "Elmer's Glue."

Since then hundreds of collectibles have developed around Elsie, Elmer, and their offspring, daughter Beulah, and son Beauregard. Many of these famous items and advertising pieces are expected to be displayed, bought, sold and traded by exhibitors and collectors at this largest all-dairy antiques and collectibles show in the United States.

Readers are encouraged to mark Sept. 21-25 on their calendars. Those interested in exhibiting free of charge should contact Dr. Darwin Braund, 238 Agricultural Administration Building, Penn State University, University Park, PA 16802-2600. Phone (814) 863-1383, or contact Lolly Leshner, Pa. All-Dairy Antique Show, Farm Show Complex, 2301 North Cameron Street, Harrisburg, PA 17110, or phone (717) 787-2905.

Registration forms will be sent to all interested persons. Registration, admission and parking are free.

**PORTERFIELD AUCTIONS**  
**HUGE TOY AUCTION**  
**300+ LOTS**  
**TONKA ~ NYLINT ~ MARX**  
**STRUCTO ~ WINROSS**  
**HESS ~ FISHER PRICE ~ HUBLEY**  
**THUR. AUG. 1, 2002 @ 5:00 PM**  
**LOCATED at 938 LANCASTER PIKE, BUCK, LANCASTER COUNTY, PA.**  
**Along Rt. 272 South, 1/2 mile North of the Buck.**  
**(From Lancaster follow Rt. 272S to sale, from south follow Rt. 1 to 272N to sale)**  
**SEVERAL HESS TRUCKS & MINIATURES FROM 70'S TO 2000**  
**50+ Lots of Ertl farm toys!!**  
**DOORS OPEN AT 3:00 PM**  
**FOOD SERVED**  
**THIS IS A VERY PARTIAL LISTING!**  
 www.porterfieldauctions.com  
 Terms: Cash, Cert Funds, Visa, MC  
 Bob Porterfield, Auct. RH 000285  
 1-877-10P-BUCK or (717) 284-5056

### RENTZEL'S AUCTION GALLERY

5305 N. George St. Extd. Manchester, PA 717.266.7200

### ANTIQUE & COLLECTIBLE SALE

10 AM \*\* THURSDAY JULY 25, 2002 \*\* 10 AM

Antique & Modern Furniture, Glassware, China, Smalls, & Collectibles of all sorts!

ITEMS STILL BEING UNPACKED FOR THIS SALE!



**PARTIAL LISTING: ANTIQUE & MODERN FURNITURE, ETC:** Large 2 pc arched corner cupboard w/rat tail hinges, early oak Sideboard w/twisted carved doors & mirror, beautiful Clarks Spool Cabinet, PA House DR & BR suites, carved rosewood pieces, Gateway computer

**ANTIQUA SMALLS:** ES & B #5 New Brighton PA Jug; JH Dipple #2 Lewistown PA Jug, early wall & mantel clocks, reverse painted glass lamp shade, oil lamps, pocket watches

**CHINA & GLASS:** 50+ pcs of hand-painted & signed Fenton glass, Lenox "Rose Manor" service for eight plus numerous extra pieces; early Vaseline pieces, cobalt blue, forest green, peach lustre & pink depression glass

**COLLECTIBLES:** Civil War Reenactment uniforms, drums & other items, Glynda Turley Hummingbird & Pansies hand painted tiffany style lamps, 100+ Anheuser Busch, Budweiser & other beer steins, Harbour Lights Ltd Ed Miniature figurines, Lighthouse collectibles, old & new trains, miniature purses & shoes, several hand decorated lamps, large selection of CD's, DVDs, videos, LPs, books

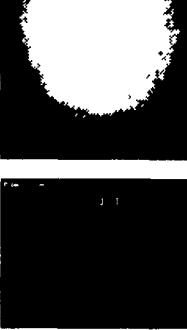
**CLASSIC VEHICLES:** 1950 Nash Fleetline, 1953 4440 Chevrolet Truck, 1959 Nash Metropolitan, 1962 Corvair, 1963 Pontiac Lemans, All are in restorable condition! 1971 VW Bug, parts only Also, misc VW & foreign auto parts

For a complete list as it becomes available email mparthree@suscom.net or call The Gallery. Additional Antique Consignments Welcome!

Box Lots, Tools & Lawn & Garden items outside starting at 10 AM! Inside Sale begins at approximately 12 Noon!  
 Showcases at 4:00 PM  
 Vehicles at 6:45 PM  
 Furniture at 7:00 PM

Doors Open ONE HOUR prior to Auction.  
**PREVIEW: July 24, 2002 5:00-7:00 PM**  
 "The Food Den" Open During Preview!  
**UPCOMING AUCTION:**

**!! 250+ Longaberger Baskets & More - August 29, 2002 !!**  
**DIRECTIONS:** Located North of York in Manchester, PA Interstate 83 to Emigsville Exit 24 Proceed East on Route 238 for 3/4 mile to Route 181 (N. George St. Extended) LEFT onto North 181 for 3 1/2 miles Turn RIGHT at White Rock & Rentzel's Auction Sign  
 Terms Cash, Check, Visa, MasterCard & Discover  
 Rentzel's Auction Service RH-000026L. Blaine Rentzel, Lon Hess, Dave Conley  
 Manager Mike Parthree Phone (717) 266-7200  
 mparthree@suscom.net



### PA. OnSITE AUCTION CO. RANDY DICKENSHEETS AUCTIONEER LICENSE #AU-003539-L PUBLIC AUCTION

SATURDAY - JULY 27, 2002  
 STARTING AT 8:30 A.M.  
 DAY 3 OF 3 DAY AUCTION

The following will be offered at auction on site at:  
 1520 E. MAYBERRY RD. (SILVER RUN)  
 WESTMINSTER, MD. 21158

Sale for the estate of Alton (Cy) Dutterer & Mrs. Garma Dutterer  
 DIRECTIONS - From PA - Littlestown Square - follow Rt. 97S approx 5 3 miles Turn right onto E Mayberry Rd Go approx 3/10th mile to sale site on right From MD. - Westminister Rt. 140 follow Rt. 97N approx 6 miles Turn left onto E Mayberry Rd go approx 3/10th mile to sale site on right

#### 12:00 NOON SHARP - REAL ESTATE - 12:00 NOON SHARP

Very nice approx 1700 sq ft Victorian design two story brick & wooden shingle house on approx 4 3 acre lot with mature trees & shrubs House has very nice wrap around L-shaped front porch & nice back porch with balcony above Property has a 14'x28' one car detached garage with rear storage area & also small wooden storage shed to rear of property House has attic with wooden floor & full basement with finished club room with woodstove & 1/2 bath First floor with approx 835 sq ft includes foyer with open staircase - living room - dining room - kitchen & pantry area Second floor with approx 865 sq ft includes four bedrooms with laundry area & 1 full bath Private well & private septic Located in Carroll County Property to be sold AS IS Settlement Terms = \$15,000 00 down day of sale paid by cashier's check, settlement within 45 days Property taxes to be pro-rated at settlement

#### PARCEL OF LAND

Nice vacant parcel of land approx 1 09 acres which lies to right side of house and lying on the north side of Mayberry Road Land is rectangular in shape & slopes from front to the rear of property The land is currently zoned agricultural which allows for current use or residential use Land to be sold AS IS Settlement Terms = \$5,000 00 down day of sale paid by cashier's check, settlement within 45 days Property taxes to be prorated at settlement

#### ANTIQUA & COLLECTIBLE FURNITURE

7 wooden drop leaf tables including very nice antique Sheraton drop leaf table with gate leg Walnut Sheraton 1 drawer stand, Cherry stand with tapered legs, Oak pedestal flower stand, Walnut footstool with OG feet, Empire upholstered footstool Fiddle back plank bottom rocking chair, 8 antique dovetailed blanket chests, softwood 2 door - 1 drawer dry sink, Singer treadle sewing machine mounted in Walnut cabinet, Pine cobblers bench, Victorian side chair with cane seat, 3 empire chests of drawers in rough, rope bed, antique 2 pc Schoolmasters desk with old yellow paint & 2 blind door bookcase top & slant lid 2 drawer interior base, 2 tier oak stand with beaded edge top, nice 1930s floor magazine rack, wooden stool, oak chifferobe with 6 drawers & closet, set of 4 fiddle back decorated plank bottom chairs, pair of cannonball single size rope beds, pine 3 over 4 drawer chest with bracket feet, small size Jenny Lind style daybed, antique walnut 4 drawer chest with ball feet, walnut dish top tilt top stand on tri snake legs, 2 drawer - 2 door cabinet with dovetailed bracket feet & dovetailed galley, fine reproduction 2 pc Walnut Dutch cupboard - top with 9 pane glass door with rat tail hinges - base with 2 drawers & 2 doors with rat tail hinges, walnut cobblers bench with 2 drawers, old wooden flour box, wooden armed rocking chair with cane seat & back, antique 2 pc Softwood corner cupboard = 2 door top each door has 8 panes of glass & 2 door base - dark finish over red paint, set of 6 refinished plank bottom chairs

#### ANTIQUA & COLLECTIBLES

16 nice old quilts of various patterns, 3 hooked throw rugs - 1 = man & lady silhouette & 1 = 2 dogs, OG weight clock by "Waterbury Clock Co," RARE "Standard - Pat March 31, 1903" metal & iron lard-cheese or butter cutter, very nice small size Enterprise iron double wheel coffee grinder with drawer, "The Right Honorable Charles James Fox" large oak framed black & white print - Engraved & Published by W Reynolds of Poland St London 1806, H W Hayden's large brass bucket with bail handle, "The American Brass Kettle Manu" Small brass bucket with bail handle, large size brass kettle (as is), small brown crock, stoneware crock, very nice #8 stoneware crock, very nice stoneware jug with cobalt blue decoration, S Bell & Son decorated stoneware crock, 17 other various size crocks, service for 4 "Pope Gosser" china, brass spittoon, small round tin lunch bucket, 3 wooden sugar buckets, deep walnut oval picture frame, glass oil lamp, carnival glass small corn pote, pair of colored transfer plates titled "Landscape" by WR Midwinter England, Baltimore Pear clear glass bowl - relish dish & 2 goblets, 2 Royal Osborne England soup plates, meat saw, slaw board, "Peanut Kids" peanut butter tin, selection of doilies & linens, approx 50 glass & few china toothpick holders in various patterns, old paper Mache Bell sicker Santa Claus, 1 = celluloid & 1 = plastic Santa Claus, Ingraham 8 day shelf clock, Lightning Glider sled, beaded pin cushion, signed "M B. Young" antique wooden hay fork, 2 = Morning & Evening Prayer - Currier & Ives framed prints, collection of brass & glass oilers off old gasoline steam engines, few pcs Modern pewter, 60 pcs. Homer Laughlin Virginia Rose china, Plum & pear patterned stemmed ware goblet, feather pattern clear glass cake stand, depression glassware including pink depression rose pattern vegetable bowl - green depression love birds creamer - green depression cherry pattern platter - pr Pink depression tumblers - pink depression creamer & sugar - green depression etched creamer & sugar - cobalt blue depression S&P, mini Milk glass chicken on nest, marigold carnival glass open compote, marigold carnival glass ruffled edge bowl with pattern, marigold carnival glass vase with clear glass db Handles, blue & white opalescent pr footed vases, blue & white opalescent bowl, footed green & white opalescent fluted bowl, clear & white opalescent hobnail lge Round plate, decorated Blue Ridge handled celery dish, several nice pcs of clear pattern glassware including water pitcher - center bowl & others, milk glass basket, Royal Doulton "Gauler" character mug with Williamsburg, antique H&D York, Pa. wrench, "A.H Melhorn Drugs & Liquors Hanover, Pa" wooden handled advertising pc., Hand-i-Sift decorated flour sifter, nice old postcard album with 204 post-cards, cast iron nude lady boot jack, double sheaf of wheat butter print, pat. 1868 brass bucket with iron handle, assortment of old holiday postcards (to be sold mostly by the pc ), "Country Stoneware & Pottery" collector's guide, book of "Quilts of Adams County, pennsylvania," couple wooden bowls, old paper goods including 4 old 1830s newspapers - 1804 Berks County old hand written deed - nice early 1900s magazine ads including Cream of Wheat & others, wooden measure, galvanized sprinkling can, 2 wooden rolling pins, nice brown & cream colored Bennington corn pattern water pitcher, slaw cutter, black & white spotted graniteware bucket, sterling silver "1906 North Shore Horse Show" trophy vase

#### VERY NICE ANTIQUA & COLLECTIBLE TOYS

Wolverine tin adding machine, tin Unique Art Mfg. Co G.I. Joe & his Jouncing Jeep wind up toy, Ideal 1950s black plastic toy telephone, made in Germany camel pull toy, old tin truck with rider, 1940 Richmond Spelling board #50, J Chen tin wind up fish, Buck Rogers Sonic Ray gun in original box, Nonpareil #79 Southern Pacific tin toy locomotive, Remco Space Commander plastic walkie talkies, old Steif approx 5 1/2" stuffed Leo Lion, Scottie dog pull toy on wooden wheels, tin Spanish Darts & Bulls eye game, Remco Radio Craft transistor radio kit, Buddy L Nasa shuttle set, couple old cast iron soldiers, Gilbert chemistry experiment lab in metal case, Marx automatic Arcade shooting gallery, Slugger Poosh-M-Up baseball Bagalette game, Wham-O hunting slingshot, Crosman Powermaster 760 BB repeater gun, FD Peters Co pair of shoe skis, Knickerbocker plastic shooting ball gun, 1949 Donald Duck-Mickey Mouse Grant crayons, old Pez space gun candy dispenser, old Gman badge, 1953 Gotham tin 4 in 1 game with box, Sago "Santa Fe Super Chief" battery operated electric train with box & papers, 2 cigar boxes of old marbles, Selchow & Righter Co "Cabby" board game, Crow Shoot, cork gun game, Keystone shooting Frontier set with box, Howdy Doody coloring book, selection of other misc 1950s toys & books

#### ANTIQUA COINS

19 Morgan silver dollars, 14 silver Liberty Peace dollars, other coins including few 1/2 dollars, few large cents, Indian Head pennies & more  
**Open House & Sale Preview - Sunday Afternoon - July 21 - From 2:00 p.m. to 4:00 p.m.**  
 P.O.A. - Dennis A. Dutterer Attorney - Mike Richey  
 Food Stand Provided by The Silver Run Reformed Church

Sale to be Held Rain or Shine  
**REAL ESTATE TERMS:** House - \$15,000 00 down day of sale by cashier's check, settlement within 45 days PARCEL OF LAND - \$5,000 00 down day of sale by cashier's check, settlement within 45 days

**PAYMENT TERMS** - Cash, Cash, Cash, Travelers Checks or Good Local Check  
 For More Information Call (717) 630-9349 or (717) 630-9365 or  
 Email us at dickensheets@ininternet.net