

'97 Chevy Cheyenne 2500 extended cab, 2WD, 350 auto, PS, PB, cruise, tilt, air, 373 ratio, limited slip diff., towing package, 57,000 miles, new radials, \$11,900. 717-733-2873

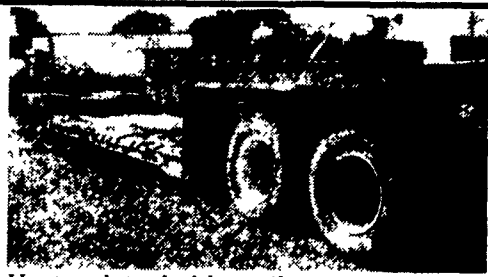
1988 Chevy Suburban, 4x4, K2500, good cond. Balto Co., MD 410-456-4695

**FOR SALE:**

**85 EAGER BEAVER TRAILER**

8x16 Deck w/4.5' beavertail & ramps. Frame sandblasted & painted, new tires, new elec. brakes, new 2" deck.

**\$6,500 neg. 610-383-7042**



Hyster detachable trailer, pony motor, 20 ft. deck • \$4,200

610-944-9871 Eves. • 610-858-4092 Cell

**GM Goodwrench Engines**

feel the confidence

**GM Parts**

THE FEELING IS GENUINE



- 12 Month Minimum Warranty
- Limited 36 Month Warranty
- Shipped As Shown

86 and prior carbureted 4 bolt main....\$1,370  
87-95 TBI, Truck, 2 bolt main.....\$1,799  
87-96 TBI, 3/4 Truck, 4 bolt main.....\$1,899

**Pro-built Custom Engines**



**GM PERFORMANCE PARTS**  
MORE THAN 300 HP POWER.

**470 HP-355CI Street / Strip**

Carb to pan pkg. Includes Fuel Pump, Distributor, Wires, Demon Carburetor, Victor Jr. Intake and Dyno Sheet

Only \$4,500

**355CI TBI Upgrade**

325 HP 400FT-LBS, Dyno Proven HP 87-95 Trucks With Dyno Sheet

Only \$2,995

*Jones*  
**Parts Warehouse**  
A Division of Jones Family of Dr.

Prices are subject to change. Prices do not include shipping. Please call for the best possible shipping prices for you.

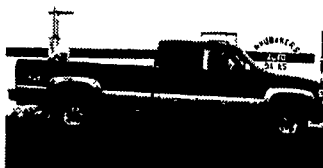
1-800-827-0129

**BRUBAKER'S  
AUTO SALES**

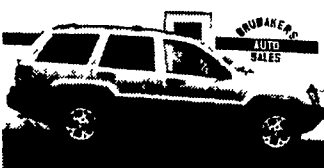
PH. 717-866-5237

Hours: Mon.-Fri. 8 a.m. - 9 p.m.; Sat. 8 a.m. - 6 p.m.

ROUTE 422  
MYERSTOWN, PA



**99 CHEVY SILVERADO EXT-CAB 2500 LS 4x4**, Blue/Grey 6.0 V8, AT, AC, PW, PL, CC, Tilt, AM/FM/CD, Keyless Entry, 65,660 Mi **\$19,500**



**99 JEEP GRAND CHEROKEE LAREDO 4x4**, Gold, 4.0 6 Cyl., AT, AM/FM/CAS, A/C, PW, PL, CC, Tilt, Keyless-Entry, 45,060 Mi **\$15,900**



**99 FORD WINDSTAR SE**, Quad-Seats, Black, 3.8 V6, AT, AM/FM/CAS, PW, PL, CC, Dual-AC, Pwr Seats, Leather, Pwr Sliders, RSS, Keyless, 26,535 Mi **\$15,900**



**97 FORD F-150 XLT OFF-ROAD 4x4**, FLARESIDE, Maroon, 4.2 V6 5sp, AM/FM/CAS, A/C, PW, PL, CC, Tilt, Pwr-Seat, Keyless Entry 74,160 Mi **\$11,900**



**01 DODGE RAM 1500 LARAMIE SLT 4x4**, Quad-Cab Maroon/Grey, 5.2 V8, AT, AM/FM/CAS, A/C, PW, PL, CC, Tilt, \*Curtis-Snowplow 42,347 Mi **\$19,900**



**00 GMC SONOMA SLS 2WD**, Maroon, 2.2 4cl, 5sp, A/C, CC, Tilt, AM/FM/CD, 31,015 Mi **\$9,800**



**00 MERCURY MOUNTAINEER AWD**, Green, 5.0 V8, AT, AC, PW, PL, CC, Tilt, Pwr Seat, AM/FM/Cass/CD, Keyless-Entry 27,430 Mi **\$17,900**



**00 FORD RANGER XLT**, 4x4 Off-Road Quad-Cab Gray, 4.0 6cl, 5sp, AC, AM/FM/CD, 10,750 Mi **\$13,900**

**PONTIAC • HONDA • GMC TRUCK • ACURA • USED CAR CENTER**  
1335 Manheim Pike • Lancaster, PA  
**717 394-0711**  
**QUALITY PRE-OWNED BEST BUYS!**

*Jones*

Prices based on straight sale. Tax and tags extra. Trades accepted at actual cash value. Must present this ad at time of purchase for sale price.

**JONES QUALITY PRE-OWNED BEST BUYS!**



**02 GMC SIERRA XCAB 4X4**  
Z71, V8, SLE, Air, Black, #6669  
Was \$30,200  
**SALE \$26,100**



**2002 GMC 3500 15' CUBE VAN**  
Auto., Air, 350, #40340,  
MSRP \$30,956  
**SALE \$26,417\***



**NEW 2002 GMC CREW CAB 4X4**  
Auto., Air, 6000, V8, Trailer Package, #33934,  
MSRP \$32,730  
**SALE \$29,999\***



**NEW 2002 GMC K2500 XCAB 4X4**  
9200 GVW, AT, Air, 6.0 V8, Work Truck Package, #33366, MSRP \$31,370  
**SALE \$28,300**



**2002 GMC SIERRA CREW CAB 4X4**  
Diesel, Allison Auto, Air, 6.6 Duramax, Dually, 11,400 GVW, Loaded #7777, Was \$45,800



**01 CHEV BLAZER LT 4X4**  
Auto, Air, V6, 4 Dr, #6648  
Was \$21,000  
**SALE \$18,800**



**2001 DODGE 250 250 XCAB 4X4**  
Auto, Air, SLT, Cummins Diesel, 11K Miles, #6616  
Was \$35,500  
**SALE \$28,700**



**2000 GMC SIERRA K2500 XCAB 4X4**  
Auto, Air, V8 SLE, 26K, Miles, #6735  
Was \$27,700  
**SALE \$24,800**



**2000 CHEV. SUBURBAN 4X4 LT**  
Auto, Air, V8, Leather, 27K Miles, #6730, Was \$34,900  
**SALE \$31,500**



**2000 GMC SONOMA XCAB 4X4 ZR2**  
Auto, Air, V6, Hi-Rider, Black, #6626, Was \$18,444  
**SALE \$15,900**



**99 CHEV TAHOE 4X4**  
LT, Auto, Air, 350, #6644  
Was \$24,800  
**SALE \$21,200**



**99 CHEV K1500 4X4**  
LS, Auto., Air, V8, Shortbed, #6622, Was \$21,900  
**SALE \$19,200**



**98 CHEV CONVERSION VAN**  
Auto, Air, TV, VCP, V8, 55K Miles, #6738  
Was \$15,900  
**SALE \$12,300**



**98 FORD WINDSTAR GL**  
Auto, Air, V6, 7 Pass, 40K Miles, #6703,  
Was \$12,900  
**SALE \$10,400**



**98 GMC K2500 4x4**  
SLE, 350, Auto, Air, #6687  
Was \$15,000  
**SALE \$12,800**



**99 CHEV. ASTRO AWD MINI VAN**  
LS, Auto, Air, V6, 8 Pass, #6656  
Was \$14,700



**99 FORD EXPEDITION 4X4**  
Eddie Bauer, Auto., Air, V8, 31K Miles, #6695  
Was \$25,500  
**SALE \$22,700**



**98 GMC K15 XCAB 4X4**  
Auto, Air, 4.3 Vortec #6604  
Was \$14,900  
**SALE \$11,700**



**97 CHEV. SUBURBAN 4X4**  
SLT, Auto, Air, 350, Dark Blue, #6691  
Was \$16,500  
**SALE \$14,200**



**97 GMC JIMMY 4X4**  
SLT, V6, 4 Dr, Auto, Air #6613  
Was \$14,000  
**SALE \$10,500**

\*All New Vehicles include GM Rebates Included In Sale Price