

1981 Dodge 1 ton, dually, 4WD, dump bed, 360, 4 spd, 8' Fisher power angle plow, great farm truck, \$6,000. 717-248-4122 days, eves 717-935-2994.

'77 White Road Boss dump truck, single axle, 36,000 GVW, 318 Detroit dsl, 10 spd trans, setup to pull trailer, tarp included, inspected, \$6,800. 18 ton equip trailer, (Lowboy) \$2,800, package deal, \$8,950. 570-254-9861

1995 Chevy K2500, new tires, new paint last yr, 115K mi, 350, auto, 4x4, needs some mechanical TLC, \$8,000. 717-248-4122 days, eves 717-935-2994. 16' Stoltzfus lime spreading box, excellent condition. 717/278-5261 day, 717-768-8427 eve

1995 Dodge Ram 3500, Cummins dsl eng. w/ 47,500 mi., 4WD, HiLo range, manual trans., tach, AC, AM/FM cass., PW, PS, bright red, garage kept, sharp looking, \$19,900. 717-492-9216 lv msg

New truck bodies, 12'x88, Omaha Standard, all steel, special \$799, reg \$1,450. Limited number. 570-222-9090.

'89 Ford 350, 60,000 orig mi, crew cab, loaded, \$8500 obo. 570-462-0635

Flatbed, GN, 28'x102" w/ dovetail, 14,000 GVWR, \$4500. 301-898-9100

'86 Ford F250 dsl, 4wd, 4 spd, runs good, \$3000. 301-898-7329

Freightliner 2000, FL70, 2600 GVW, white, auto tran, Cummins 240 alum flat bed, air susp, air brakes, 9900 miles, \$36,000 obo. 301-898-9100

FOR SALE



1998 Wilkens Walking Floor Trailer
Spread axle - FRP Sides, 38ft x 102in x 13ft, 95 yd capacity, Low Pro 22.5 Rubber, Aluminum Wheels
\$21,000
717-949-2371 Newmanstown, PA

7511 Allentown Blvd.
Harrisburg, PA 17112

75 TRUCKS

AFFORDABLE CARS AND TRUCKS, INC.
"You Gotta Believe!!"

717-652-1925
FAX 717-652-4888
www.autotrader.com/view/affordable car and truck

New Exit #72A, Rt. 81 N; Rt. 22 East of Harrisburg; 3 Miles North of Hershey Park

95 FORD E350 CLUB VAN XLT

5.8 V8, AT, Dual Heating & AC, 18 Passenger, Power Everything, Very Clean & Sharp! 100,000 Mi.



00 FORD F350 XLT

Crew Cab, 4x4, Longbed, 7.3 Powerstroke, AT, AC, PW, PDL, Stereo CD, Alloys All Black, 80,000 Mi., Beautiful Truck, As Always Wholesale Priced Here At Affordable **\$24,995**



97 FORD F250 XLT 4x4
H D Ext Cab Longbed, 7.3 Powerstroke Diesel, AT, AC, PW, PDL, 2-Tone Grey/White, Tow Package, Very Clean & Well Kept, 102K **\$16,500**



99 FORD F250 XLT 4x4
Quad Cab Longbed, 7.3 Powerstroke Dsl, Rare 6-Speed, AC, PS, PDL, Stereo, All Orig Red Finish, Showroom Condition! 102K Sale **\$21,995**



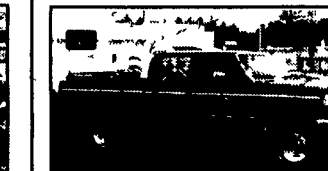
95 FORD F250 XLT 4x4
H D Ext Longbed, 5.8 V8, 5-Spd, AC, PW, PDL, Stereo, Expensive Color Keyed Truck Cap, 100,000 Mi., Very Beautiful Truck, Ready To Tow! **\$10,500**



99 FORD F350 XLT Lariat 4x4
Super Duty Crew, Dually 7.3 Powerstroke Dsl, 6-Speed, AC, PW, PDL, Stereo, Tilt, Cruise, Leather, Very Clean, Well Maintained, 1-owner, 148K All Highway Unstoppable Puller!



96 FORD F250 XL
4x4, Ext Cab, Longbed, 7.3 Powerstroke Dsl, 5-Speed, AC, Cloth Seat, Looks & Drives Like 70K, Does Have 170K All Highway Light Pull, Must See & Drive! **\$13,500**



96 FORD F250 XLT
4x4 Crew Cab, Short Box, 7.3 Power Stroke, AT, A/C, PW, PDL, Stereo, Alloys & More, Only 81K, Real Clean Truck **\$17,995**



94 FORD F250 XLT 4x4
Ext Longbed, 2 Tone Green, 7.3 Turbo Dsl, AT, AC, PW, PDL, 100,000 Mi., Looks Like New! **\$11,500**



92 DODGE DAKOTA SLT
4x4 Ext Cab, 318 V8, AT, AC, PW, PDL, 100,000 Mi., Nice Truck **\$4,500**



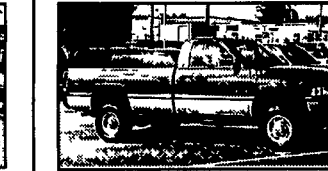
93 FORD F250 XLT 4x4
Ext Cab, Longbed, 7.3 Turbo Dsl, 5 Speed, AC, PW, PDL, Stereo, Tilt, Cruise, This Truck Is In Showroom Condition & Must Be Seen & Driven, 100,000 Mi. **\$13,500**



97 DODGE RAM 2500 4x4
Ext Longbed SLT Cummins Diesel, 5-Speed AC, PW, PDL, Stereo, Tilt, Cruise & More All Orig White Finish, Perfect Shape, Must See! 102K **\$19,495**



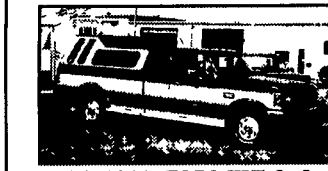
93 FORD F350 XLT CREW CAB
H D Dually 2WD Longbed 7.3 International DSL, 5 SP, AC, PW, Pdl Full Tow Package Only 80,000 Miles Mint Condition **\$12,995**



47 DODGE RAM 4x4 2500
Laramie SLT Cummins Turbo DSL, AT, AC, PW, Pdl, Tilt, Cruise Only 80,000 Miles Absolutely Perfect!!



96 FORD F250XL
4x4, 7.3 Powerstroke DSL, 5 Spd, AC, Has 150K But Looks & Drives Like 50K, Come & See That I'm Correct - I Guarantee It! **\$12,500**



89 FORD F250 XLT 4x4
Ext Longbed Centurian, 7.3 Diesel, AT, AC, PW, PDL, Stereo & Leer Cap! Only 120,000 Mi., Very Clean & Maintained! **\$7,995**



00 DODGE 2500 H.D. RAM
4x4 Laramie SLT, Quad Cab, 8' Bed, Cummins Turbo Dsl, AT, AC, PW, PDL, Stereo, Loaded, 90,000 mi., All Blue & Very Much Like Showroom Condition



90 CHEV 1500 Silverado 4x4
350 V8, AC, PW, PDL, 5-Sp, 2 Tone Paint, 100,000 Miles, But This Is A Rare Extra Clean & Maintained Truck **\$4,500**



89 GMC 1500 Silverado 4x4
AT, 5.7 V8, AC, PW, PDL, Stereo, Tilt, Cruise, Leer Cap, Only 60,000 Miles, Perfect 1-owner Truck, Well Maintained **\$7,995**



98 FORD F350 SUPREME
16' Box Truck, 5.4 Triton Motor, AT, AC, Stereo, Roll Up Door & Plank, Tow Package, 100,000 Mi., All Maintenance Records - Perfect Shape! **\$10,995**



93 FORD HI TOP CONVERSION VAN
'Excalibur' Dual AC, Dual Heat, TV, VCR, V6, AT, Cruise, Tilt, Has Only 50,000 Miles, Must See, Ready To Travel **\$9,600**



93 FORD F250 H.D. 4x4
Ext Cab, Longbed, 7.3 International DSL, 5 Speed, Nice Looking Truck, Must See, 170K & Well Cared For! **\$7,495**



92 CHEV. 2500 4x4
Silverado Ext Cab Shortbed 2-Tone Paint, 350 V8, AT, AC, PW & Loaded Very, Very Clean Truck 100,00 miles **\$7,995**

WILLIAM H. WESSELS USED CARS



01 Dodge Caravan Sport, 23,207 Miles **\$15,900**



01 Chevy G1500 Cargo Van, V6, Auto, AC, 19,290 Miles **\$14,900**



01 Ford Explorer Sport Trac, V6, Auto, AC, Factory Warranty, Only 5,000 Miles **\$20,900**



00 Ford E250 Cargo Van, V-8, Auto, AC, 19,329 Miles **\$15,900**



99 Chevy S-10 4x2, 4 Cyl., Auto, AC, 21,128 Miles **\$9,900**



99 Chevy K2500 4x4 Long Bed, 350 V8, 8800 GVW, 77K **\$15,900**



99 Toyota Land Cruiser, Leather, 4x4, 55,000 Miles **\$29,900**



99 Dodge Ram 1500 4x4, 360 V-8, Auto, AC, Short Bed, 28,330 Miles **\$17,900**



99 Chevy Venture Ext., V-6, Auto, AC, PW&L, T&C, 28,000 Miles **\$12,900**



99 Toyota Camry CE, 4 Cyl., Auto, AC, 28,690 Miles **\$11,900**



99 Isuzu HD 16' Box, Diesel, 5 Speed, 115,000 Miles **\$13,900**



98 Jeep Wrangler Sport, 4.0L 6 Cyl., 5 Speed, Hardtop, 61,000 Miles **\$10,900**



98 Toyota Tacoma Ex. Cab, 4x4, 4 Cyl., 5 Speed, AC, 27,318 Miles **\$14,900**



98 Dodge Ram 1500 Ex Cab, V-8, Auto, AC, 42,196 Miles **\$13,900**



98 Chevy K2500, Ex Cab 4x4, 7.4 V-8, Auto, AC, Front Power Mount Winch, 53,000 Miles **\$15,900**



98 Dodge Durango SLT, 3rd Seat, Leather, Rear AC, 26,610 Miles **\$18,900**



98 Jeep Cherokee Sport, 4.0 L, 6 Cyl., Auto, AC, 16,110 Miles **\$13,900**



96 Chevy Crew Cab Dually, 454 V-8, 5 Speed, 123,000 Miles **\$8,990**



96 Ford F250 Ex. Cab, Utility, 5.8 V8, Auto, AC, 105,000 Miles **\$9,900**



96 Ford Ranger Ext. Cab 4x4, V-6, Auto, AC **\$5,990**



96 Dodge Ram 2500 V-8, Auto, AC, 85,725 Miles **\$6,990**



93 Ford F350 Enclosed Utility, Diesel, Auto, AC, 182,421 Miles **\$7,990**



93 GMC Hi-Top Cons. Van, 350 V-8, Auto., AC, 85,000 Miles **\$8,990**



93 Ford E150 Cargo Van, V-8, Auto, AC, 104,000 Miles **\$6,990**



92 International 26' Box, DT466, 5 Speed, 26,000 GVW, Local Owner, 28,558 Miles **\$20,900**



90 Chevy C70 Dump w/Plow & Spreader, Diesel, 5 Speed, 40,000# GVW, Only 30,000 Miles **\$10,990**



90 Ford E350 Cargo Van, V-8, Auto, 114,000 Miles **\$1,990**

WILLIAM H. WESSELS USED CARS

811 Route 15 Dillsburg, PA
1-800-440-4433 1-717-432-2918
Notary Public - Temporary Tags