

1994 Int. 9400 Eagle \$13,900

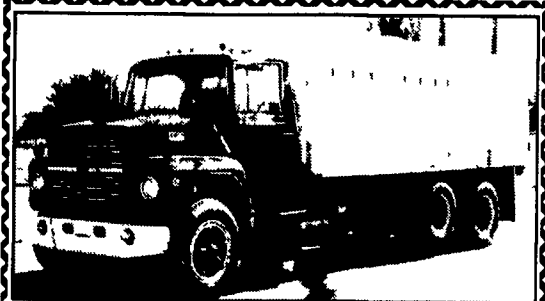
127 Detroit 365/400HP with Jake
10 Spd. RR. sliding 5th wheel air susp
All Aluminum 24.5" wheels 609,000 mi
211" W.B No Sunday Calls (717) 597-5623

'95 Chevy Silverado 2500 Suburban, 2WD, 350 auto, PS, PB, PW, PDL, cruise, tilt, dual air, 410 ratio, limited slip diff., towing package, 48,000 one owner miles, new radials, \$13,500. 717-733-2873

'98 Dodge 3500 SLT package, 15 pass., 360 auto, PS, PB, PW, PDL, cruise, tilt, dual air, am-fm cassette, burgundy & silver, new Michelins, 45,000 miles, \$13,500. 717-733-2873



'87 Peterbilt 83 Cummins rebuilt 21' flatbed, good cond \$5,900 • (717) 626-1394



1978 Ford 8000, 3208 Cat, Grain Dump Body, Good Cond. (717) 838-9043

Buy Road Ready Quality.

1327 Bulldog Drive • Allentown, PA • 800-628-2362
Cornell Hardy/David Moyer



1996 International 4700 International DT 466 175 HP 6 Spd 25,950 GVW 277 242 Miles A/C P/S Stk# 557742



1995 International 4900 International DT 466 210 HP 6 Spd 32,700 GVW A/C P/S 24 377 109 Miles Liftgate Stk# 525467



1996 International 4700, DT 466 175 HP 6 Spd 25,500 GVW 16 P/S 324,946 Miles Ther STB C12 20DN Stk# 564938



1995 Ford LA9000 CAT 3176B 300/1800 300 HP Full RTX11710C O/D 10 Spd PS Air Ride 3.91 143 WB 275 707 Miles A/C Stk# 522206



1995 Ford LN8000, 210 HP 6 Spd 1D 1460 (210/2400) P/S A/C 22 287 593 Miles 33,000 GVW Liftgate Stk# 515772



1994 International 4900, DTA 466 210 HP 6 Spd A/C P/S 33,000 GVW 159 100 Miles 5 7 Yard Dump 3/16 Steel Construction 6 Panel Heavy Duty Tilt, etc Asphalt Chute 1/2 Cab Shield 16 Ton Host 1 Year Body and Host Guarantee Stk# 491711

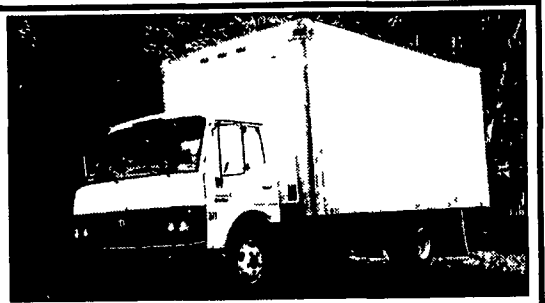


Peace Of Mind From A Name You Can Trust.

- Complete Maintenance History With Each Vehicle
- 30 Day Powertrain Warranty
- Large Selection From Our Fleet Of Over 160,000 Vehicles



1-800-USED-TRKS 1-800-873-3875 Visit our Web site at www.usedtrucks.ryder.com



FOR SALE 1993 NISSAN UD 1300
16 Cube Van 6 Cylinder Turbo Diesel 5 Speed Trans P/S 13,000 GVW Morgan Body with Roll Up Door AM FM Cassette 110,000 Miles Bridgestone Radials Good Condition
\$5900 (717)-354-8287



95 FORD RANGER XLT
2.3 FI, 5 SP., A/C, Cas., 82,000 Mi., Dk. Green, Needs Front & Rear Bumpers
\$2,350

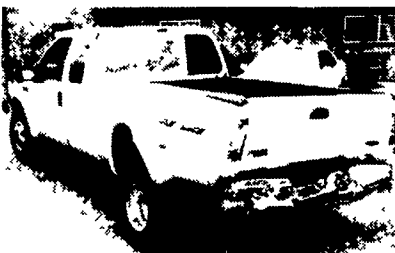


98 FORD E350 CARGO
5.3, AT, A/C, 75,000 Mi., 9500 GVW, Good Title, Needs Front Sheet Metal
\$4,800

717-355-0644 Anthony Landis Auto

THOMPSON MOTORS INC.

Main Street & Route 412, Springtown, PA 610/346-8588
5 Miles East of Route 78 (Exit 69)
"DIESEL REPAIRABLES"



99 F350 Quad Cab Dually 4x4
34K A/T, XLT, Rear Damage.....\$16,500



96 F250 X/cab 4x4
100K, Minor Front, 5 spd , XLT....\$6,500



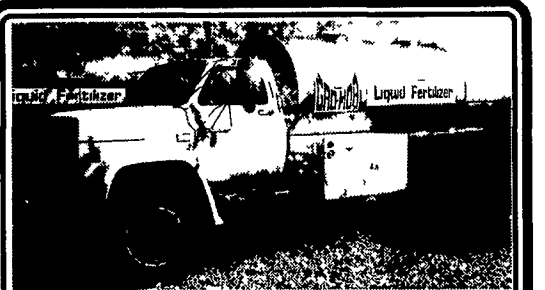
97 F350 4x4
100K XLT, 5 Spd 3/4 Nose\$6,500



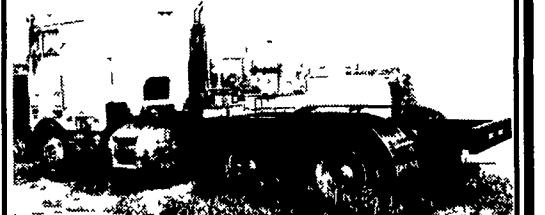
01 F250 4x2 XL
A/T, 17K, Needs Nose\$7,900

Also '96 F350 Crew Cab 4x4, front damage, XLT, stick 100K \$7,500

Call our "FAX ON DEMAND" for current inventory list at 888/755-1041
9-9 Daily 9-8 Saturday



1982 Chevy, 366, Recently Overhauled, 1600 Gal. 2 Compartment, Stainless Steel Tank, Almost New Tires, PTO System

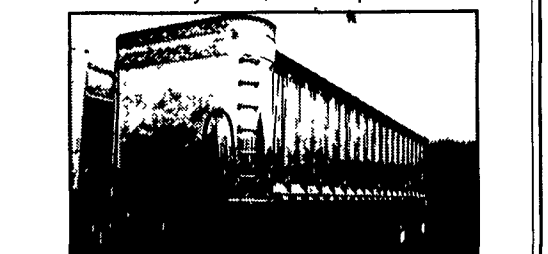


1978 Peterbilt Cab, Big Cam 400 Cummins Reman Engine, Less than 40,000 Miles on Engine, Almost New Rubber, Heavy Duty Frame, PTO

Gro-Mor Plant Food Co.
Leola, PA
717-656-4166



1985 Ti Brook Frameless Dump Trailer
38-1/2 - 80 Inch Sides, Spread Axle, Lift Axle, Air Ride, 24 - 5 Hub Piloted, Two Way Gate, Roll Tarp

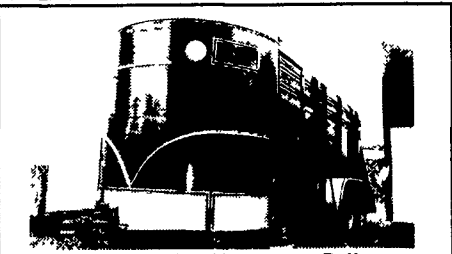


2000 Ti Brook Frameless 40 - 102
78 Inch Sides, Spread Axle, 24 - 5 Hub Piloted, Aluminum Wheels, Air Ride, Two Way Gate, 2 x 2 Coal Chute, Roll Tarp, Polished Trailer

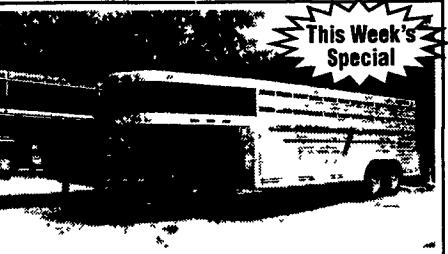
CALL 1-800-929-2676



Some Leftovers Discounted
Bumper Pull Horse & Stock Trailers In Stock



1999 Valley 18' Bumper Pull
Used very little, excellent cond. Call for details \$4,500



Leftover Cherokee 20' Stock Trailer, All Aluminum - Make An Offer!



Call For What's Available
12 Used Trailers In Stock



Big Tex 24' Flatbed, 24'x102" wide, 5' Dove Tail, 14,000 GVW \$5,715



Discount On Old Stock
50 Enclosed Trailers In Stock

TRADE-INS WANTED

YARNALL'S EQUIPMENT CO., INC.

4171 Horseshoe Pike (Rt. 322) Honey Brook, PA 19344

1-866-228-0408 Toll Free

Open 6 Days - Til 7:00 P.M. Thursdays

Financing Available

Your Old Trailer May Be Worth Lots